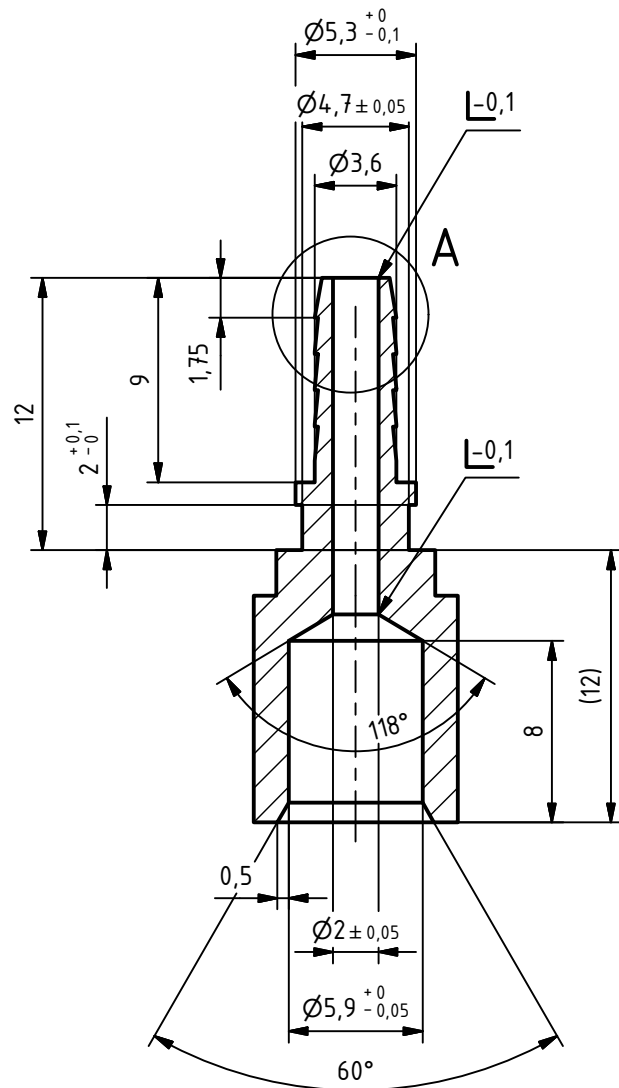
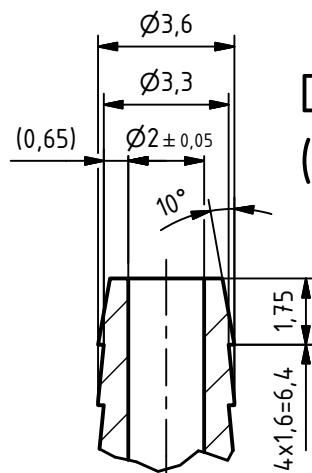


Technical drawing of a mechanical part showing a cross-section. The drawing includes the following dimensions and features:

- Total height: 24
- Height of the upper section: 14
- Top diameter: $\varnothing 7$
- Base diameter: $\varnothing 9 \pm 0,05$



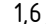
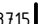


Kostenstelle oder Auftrag	
Menge	
Termin	
Anforderer	



Detail A
(5 : 1)

gratfrei
free of burrs

02	23.06.15	neu	BeA			
Rev.	Datum	Änd.	Name			
ISO 2768 mK EN ISO 1302					Mat.: 1.4305 X8CrNiS18-9	
<div><div>ISO 13715</div><div></div></div> <div>EN ISO 128</div>						
	Datum	Name		Z.Nr.:	MG_45_612	2
Gez.	24.04.2015	AugustinB		Ers.f.:	MG_45_612	1
Gep	23.06.2015	TE		Blattnr.:	1 / 1	0,00 kg