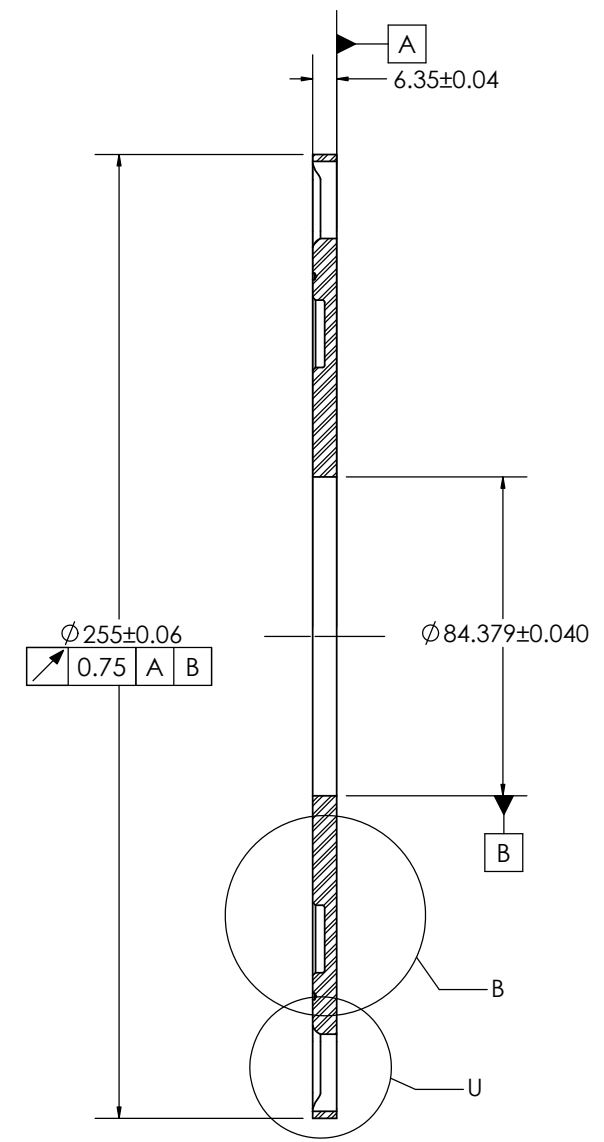
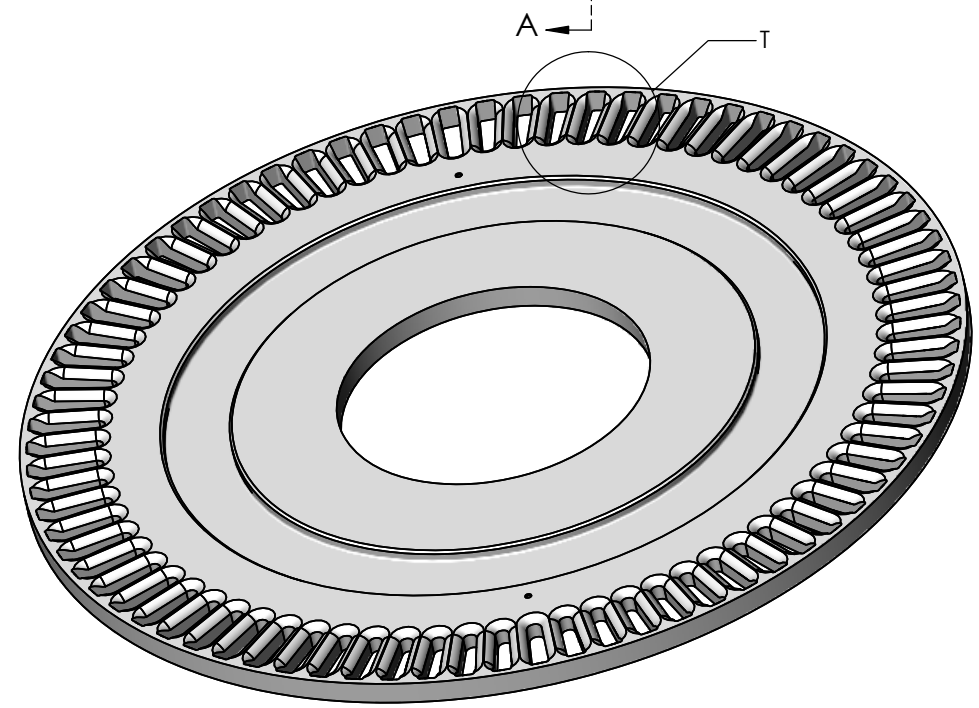
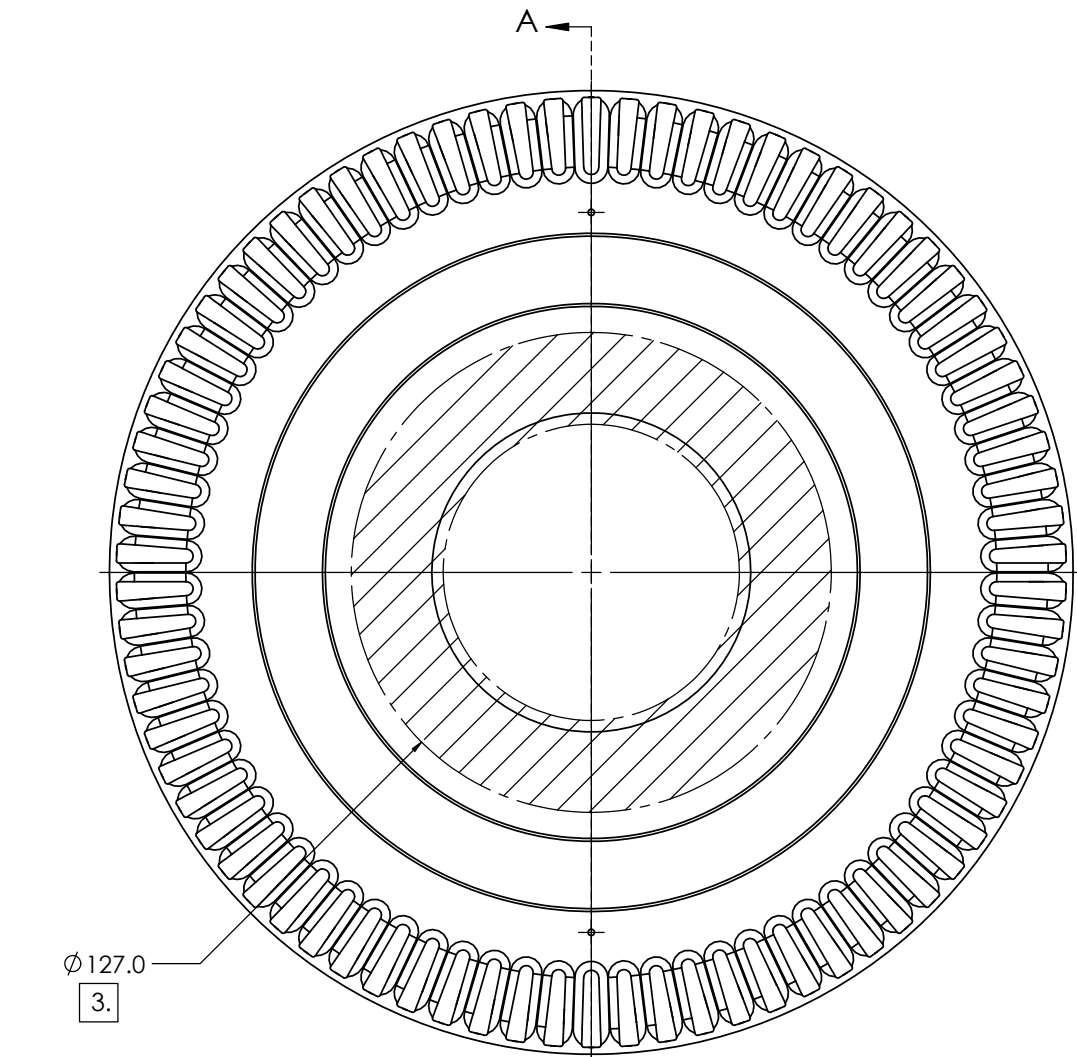
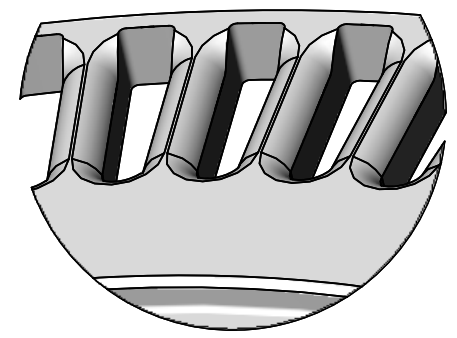


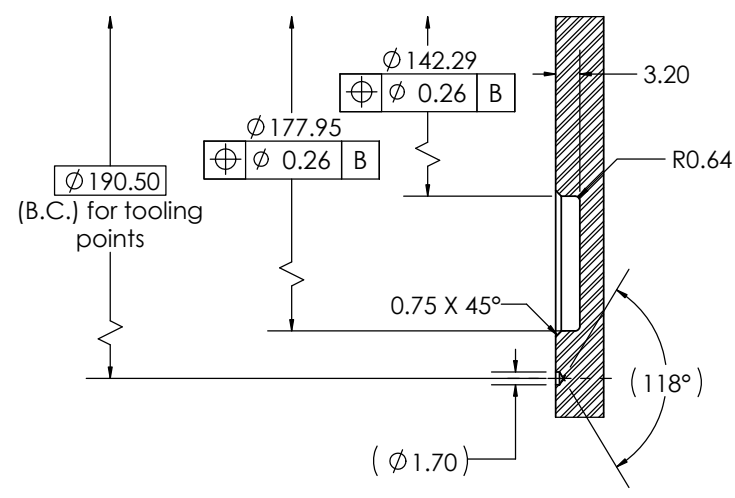
REVISIONS			
REV	DESCRIPTION	APPROVAL	
		ENGG	DATE
1	Dim. $\phi 84.379$ was $79.210$		
	Detail T added		22Jan2026
	Detail U added		



SECTION A-A



DETAIL T

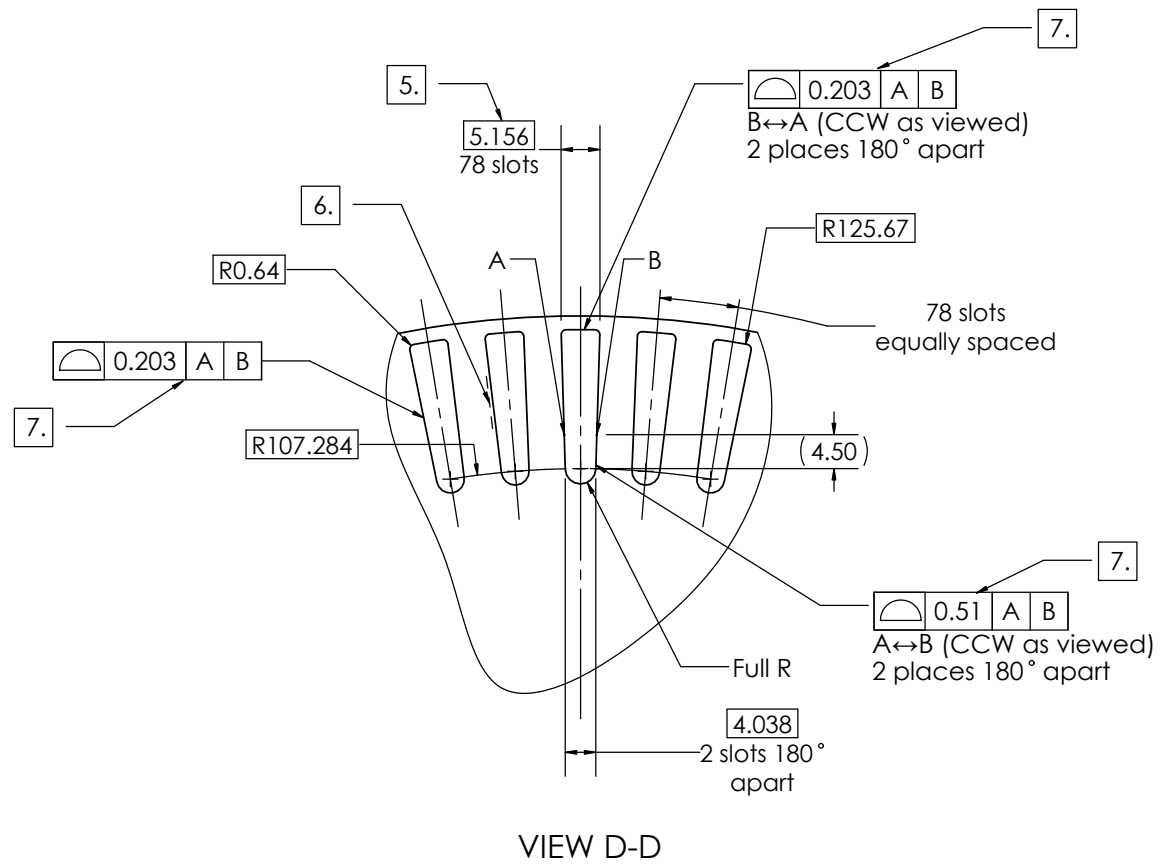
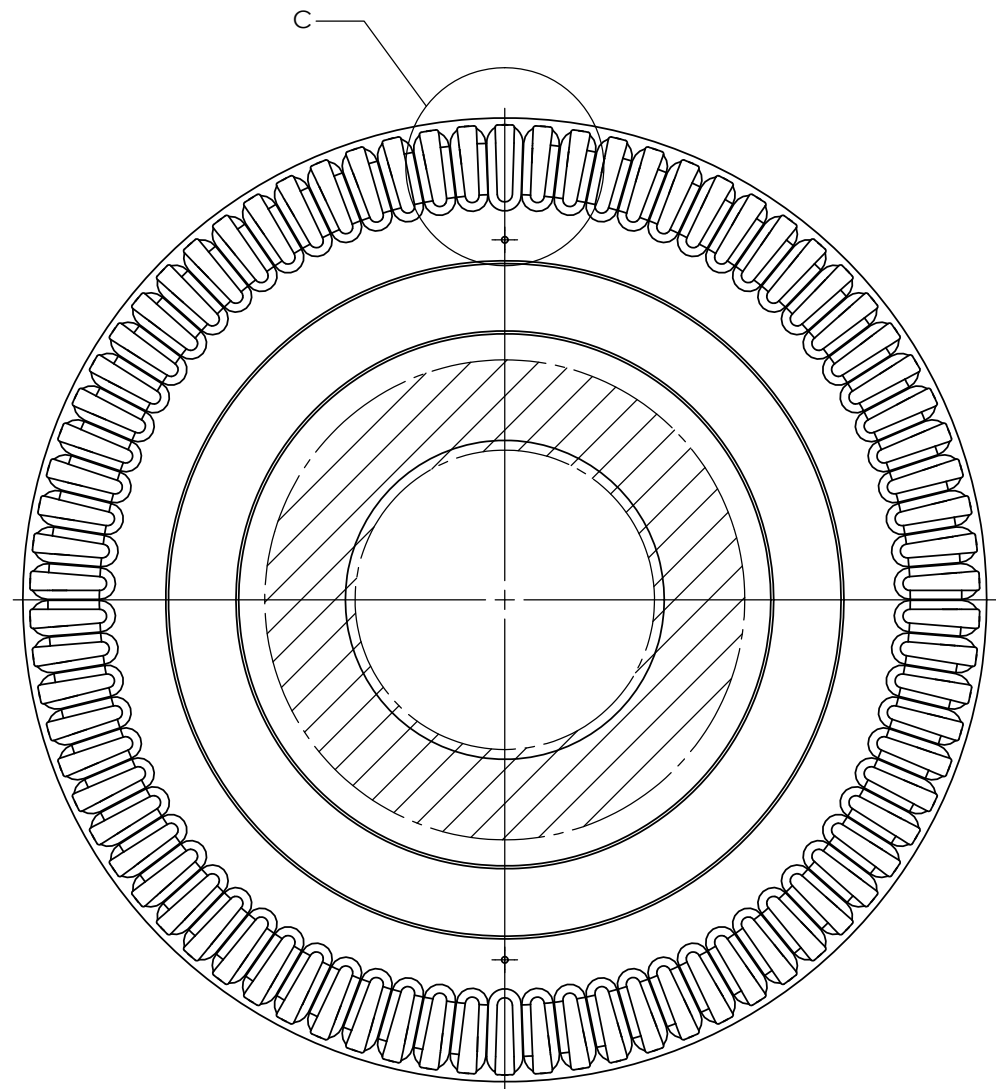
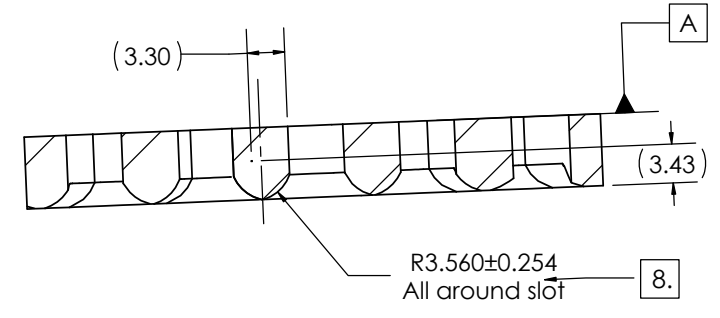
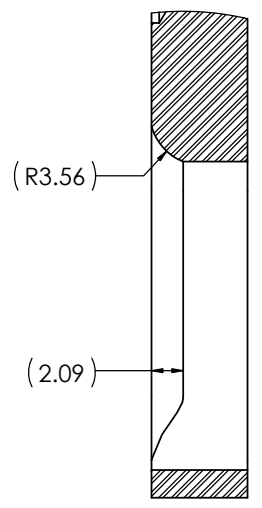
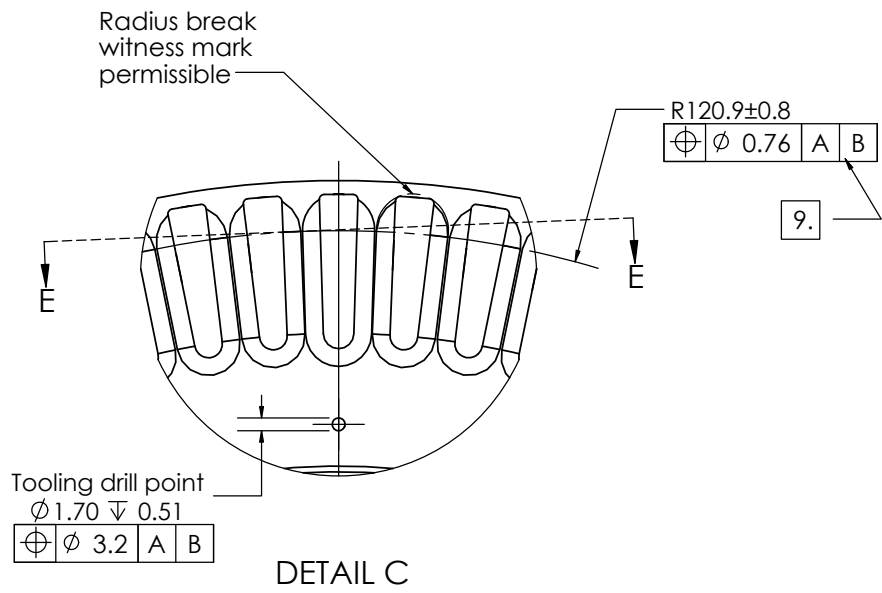


DETAIL B

- 1. Material:**  
Steel alloy; AISI 4142, hot rolled or cold finished; or ASTM A322 hot rolled; or ASTM A331 cold finished, (4142); or SAE-AMS-6382 (4142). The material shall have a minimum yield strength of 100 KSI after heat treatment.  
Or steel alloy; SAE-AMS-6395, (4140), hot rolled or cold finished; or ASTM A322 hot rolled; or ASTM A331 cold finished, (4140); or SAE-AMS-6382 (4140). The material shall have a minimum yield strength of 100 KSI after heat treatment.  
Or steel alloy; AISI 1045 per ASTM A830/A830M or ASTM A576. The material shall have a minimum mechanical properties: 80 KSI yield 8% elongation.
- 2. Heat treatment:**  
SAE-AMS-H-6875, quench and temper to 26-34 Rockwell "C".  
Except hardness inspection requirements will be defined on a lot inspection basis 5% or 5 pieces a lot, whichever is greater.  
Except tensile testing will be required on a first article inspection basis only on a sample of 2 pieces.  
Except stock removal is not required in the profile area.
- 3. Flatness:**  
0.25 MAX. may be measured in the restrained condition with 2880 LBF applied in the indicated area.
- 4. Burr height:** 0.05 MAX.
- 5.** Dimensions to a radiused vertex are to sharp theoretical vertex.
- 6.** Profile cut start-stop point R116.84
- 7.** Only applies to entrance side
- 8.** Radius break feature profile optional
- 9.** Start of full radius

DIMENSIONAL TOLERANCES UNLESS SPECIFIED			RELEASED BY PROJ. MGR. TO		TITLE		DRAWN BY DATE		CHECKED BY DATE	
TYPE	DECIMAL	FRACTIONAL	INTERNAL SHOP		ROTOR LAMINATION - NON-ACTIVE, 78-BAR		20Nov2025		20Nov2025	
LINEAR	x $\pm 0.3$	xx $\pm 0.13$	QUOTE							
ANGULAR	$\pm 0.5$		PILOT RUN							
ALL DIM. IN MILLIMETERS UNLESS SPECIFIED			ADVANCE BUY		CUSTOMER		DWC. SIZE		DWG. NO	
THREAD CLASS: 6g/6H (2A/2B)			BUY TOOLING		MATERIAL:		TREATMENT		B 077-4731	
REMOVE BURRS AND BREAK EDGES: ISO 13715			RELEASED TO PRODUCTION BY ENGINEERING		AISI 4142 hot rolled or cold finished					
			WEIGHT (GRAM):							
SCALE: NTS			REVISION		0 1		SHEET		1 OF 2	

REVISIONS			
REV	DESCRIPTION	APPROVAL	
		ENGG	DATE
1	Dim. $\phi 84.379$ was $79.210$		
	Detail T added		22Jan2026
	Detail U added		



DIMENSIONAL TOLERANCES UNLESS SPECIFIED			RELEASED BY PROJ. MGR. TO		TITLE			
TYPE	DECIMAL	FRACTIONAL	INTERNAL SHOP		ROTOR LAMINATION - NON-ACTIVE, 78-BAR			
LINEAR	x ±0.3 xx ±0.13		QUOTE					
ANGULAR	± 0.5		PILOT RUN					
ALL DIM. IN MILLIMETERS UNLESS SPECIFIED			ADVANCE BUY		CUSTOMER		DRAWN BY	DATE
THREAD CLASS: 6g/6H (2A/2B)			BUY TOOLING		MATERIAL:		Checked By	DATE
REMOVE BURRS AND BREAK EDGES: ISO 13715			RELEASED TO PRODUCTION BY ENGINEERING		AISI 4142 hot rolled or cold finished		DzmitryA	20Nov2025
			WEIGHT (GRAM): 1664.43		TREATMENT		MandeepH	20Nov2025
SCALE: NTS			REVISION		DWG. SIZE		DWG. NO	
			0 1		B		077-4731	
					SHEET		2 OF 2	