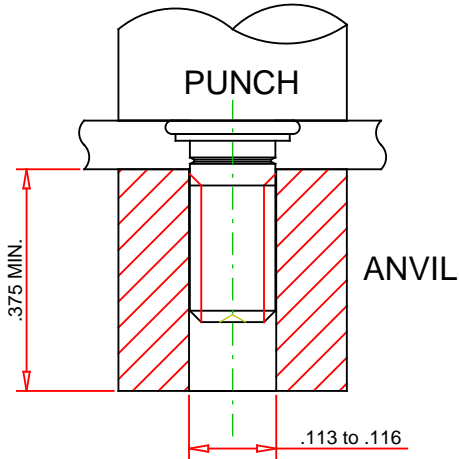
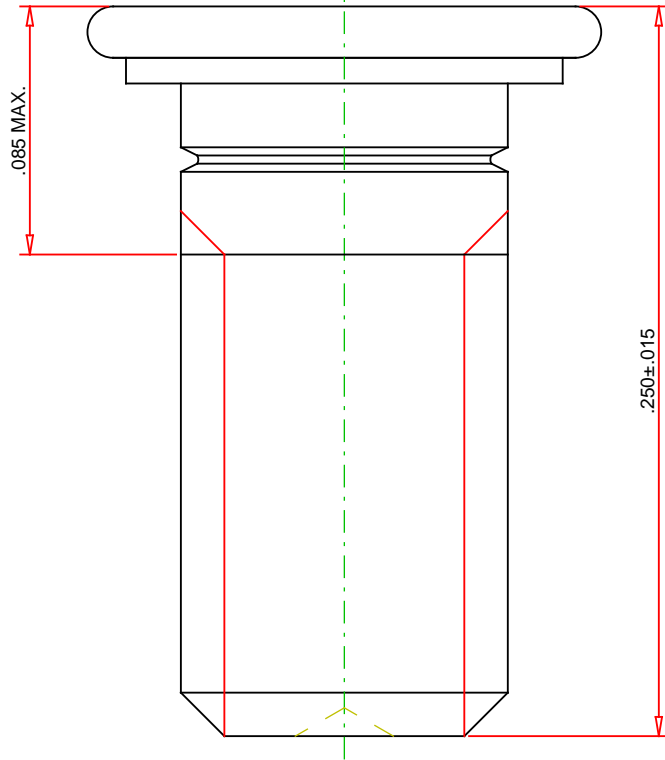
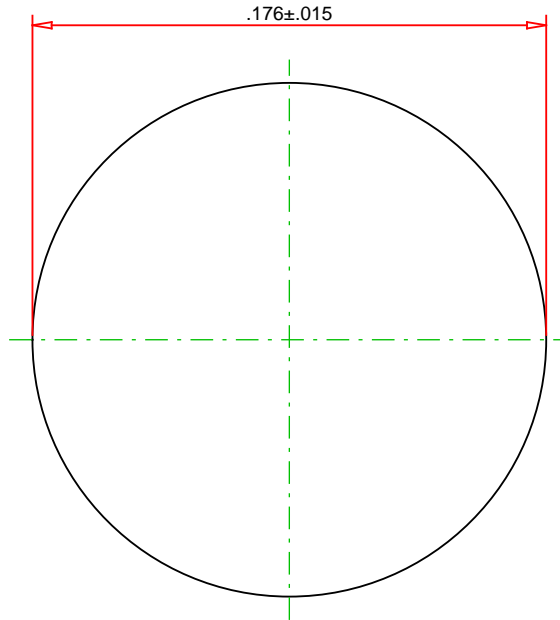
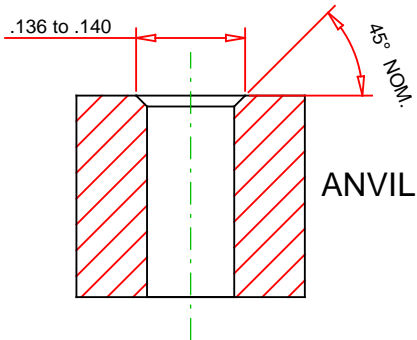


RECOMMENDED
INSTALLATION
TOOLING



TOOLING FOR SHEET THICKNESS LESS THAN .060"



© 2013 PennEngineering

ALL DIMENSIONS IN INCHES

DATE 14-OCT-2013

NOTE : DRAWING NOT TO SCALE

THREAD : .112-40 (#4-40)

MOUNTING HOLE DIA. : .111 +.003 -.000

MATERIAL: STEEL

PANEL THICKNESS: .040 MINIMUM

HEAT TREAT: YES

MAX. PANEL HARDNESS: HRB 80 / HB 150

FINISH: ZINC PLATED, 5µm, COLORLESS

MIN CENTERLINE-TO-EDGE: 0.219

DESCRIPTION :
SELF-CLINCHING THREADED STUDS - TYPE FH/FHS/FHA - UNIFIED



PennEngineering®

PART NO. :

EMAIL: TECHSUPPORT@PEMNET.COM

FH-440-4ZI

WWW.PEMNET.COM