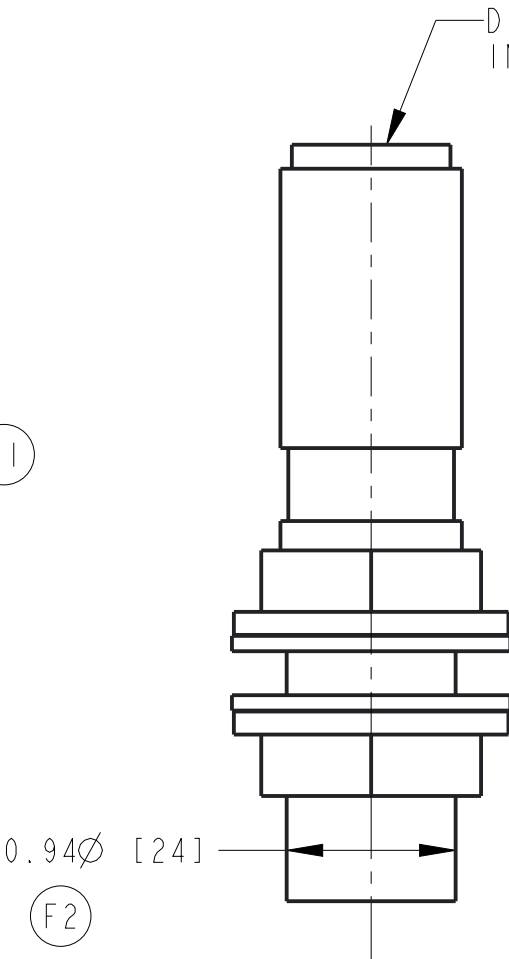
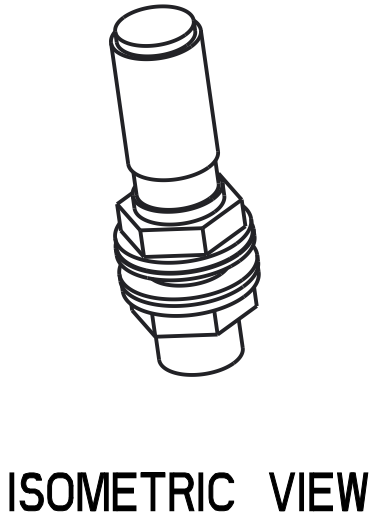


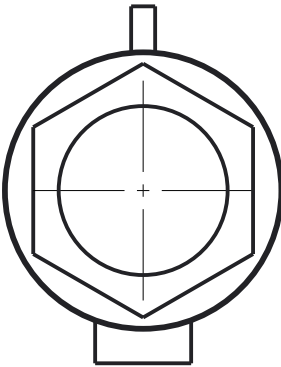
SIDE VIEW



FRONT VIEW



ISOMETRIC VIEW



BOTTOM VIEW

NOTES:

- A) LABELED WITH SIRENA S.P.A. PART NUMBER (D1) (F4)
- B) ALL DIMENSIONS ARE FOR REFERENCE ONLY. (B)
- C) PART TO BE INDIVIDUALLY PACKAGED WITH GROTE APPROVED LABEL. (D2)
- LABEL TO HAVE GROTE LOGO, MODEL NO., AND QUANTITY.
- MASTER PACK 25 PER CARTON AND LABEL:
- GROTE
- 25 EA
- 43665
- 01-4366-52
- D) INDIVIDUALS TO BE PACKED ONE TO A SHIPPER WITH GROTE APPROVED BAR CODE LABEL. (D3)
- E) DIMENSIONS ARE IN INCHES [MILLIMETERS]. (E)
- F) COUNTRY OF ORIGIN TO BE PRINTED ON THE OUTSIDE OF THE PACKAGING OR ON A LABEL. (F8)
- G) TO BE PROVIDED WITH EPDM TA 50-50 CAP #55298 (NOT SHOWN) (F5)

01-4366-52	83508-FZ	N/A	N/A
GROTE PART NO.	SIRENA P/N	LENS COLOR	UPC NO.

(F9)

REV	DESCRIPTION	ENG APP'L	ECN/ECO NO AND DATE
A	ISSUED	MHD	210294 08/30/00
B	UPDATED NOTE "A"	MHD	221217 04/09/01
C	UPDATED VIEWS TO MATCH PART	MHD	232590 01-29-02
D1	RVSD NOTE A	DS	461051 10-06-06
D2	ADDED MSTR PK INFO TO NOTE C		
D3	RMVD NOTE F		
E	REVISED PACKING NOTE "20" WAS "6"	DS	545271 02/29/12
F1	4.05[103] WAS 3.94[100]		
F2	.94Ø[24] WAS .88[22]		
F3	REMOVED DUST CAP VIEW		
F4	SIRENA WAS ECCO		
F5	ADDED NOTE H		
F6	ADDED MATERIAL DESC.		
F7	DIMENSION ADDED		
F8	QTY 25 WAS 20		
F9	UPDATED CHART WITH SIRENA INFO		

TECHNICAL INFORMATION DISCLOSED HEREIN IS THE CONFIDENTIAL PROPERTY OF GROTE INDUSTRIES, INC. AND IS ISSUED IN CONFIDENCE FOR ENGINEERING INFORMATION ONLY. IT MAY NOT BE REPRODUCED OR USED IN ANY WAY WITHOUT EXPRESS WRITTEN LICENSE FROM GROTE INDUSTRIES, INC.



DR. BY:	MDN	SCALE:	NTS	UNITS:	IN
DATE:	27-Nov-00				
MATERIAL NO.	N/A				

MAT'L DESCRIPTION ZINC COATED STEEL INTERNAL BRASS SOCKET

TITLE MOUNTING STEM FLEXIBLE BEACON (7696)

Grote GROTE INDUSTRIES, LLC. MADISON, INDIANA U.S.A.

SIZE	PART/DWG NO.	REV.	SHT #
B	01-4366-52	F	1 of 1

SYSTEM/REV.	10866
CREQ 2.0	3D DATA: YES