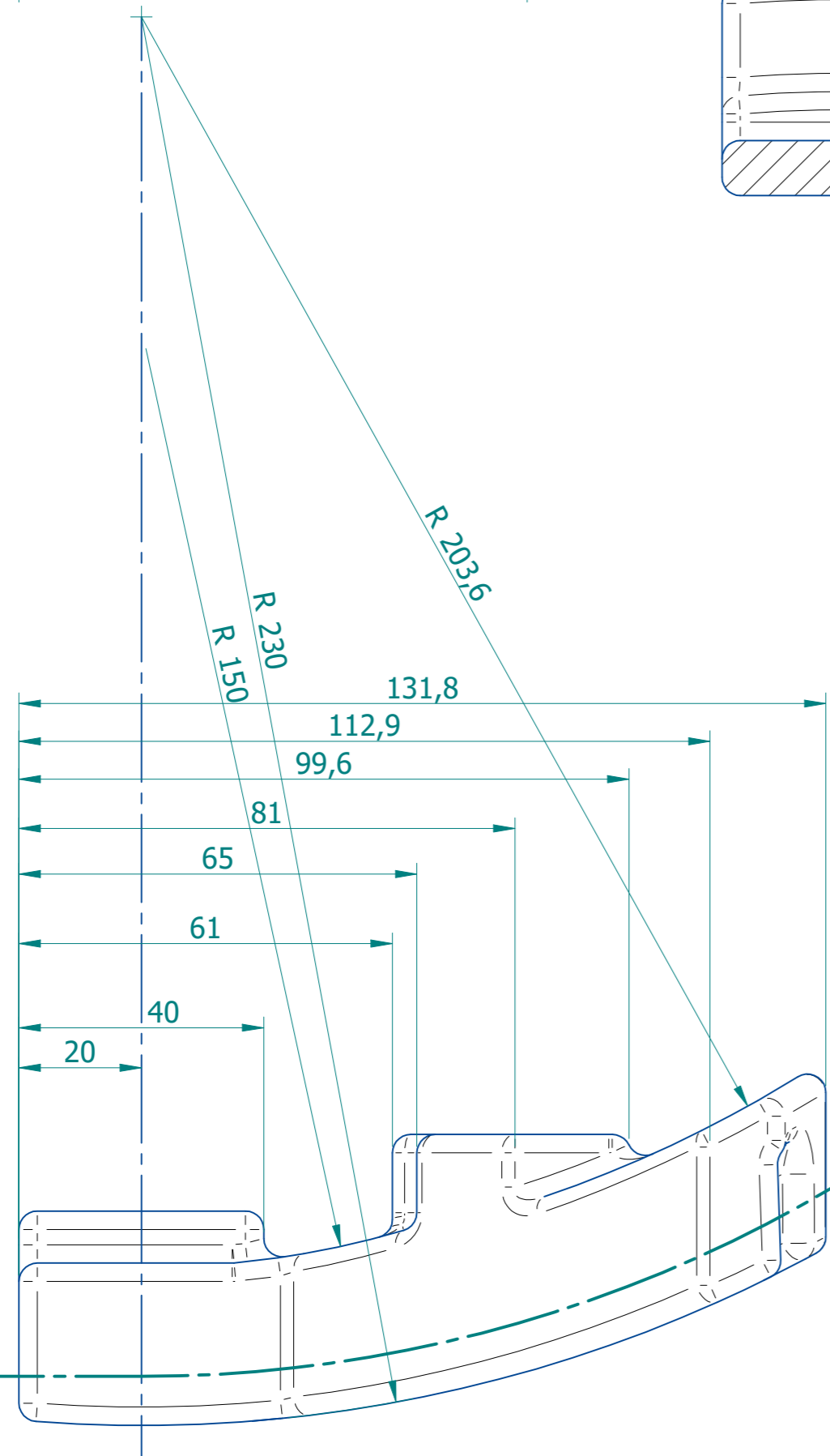


Forgotten part crack-free!
(Proof by 100% surface crack test)

General tolerances DIN EN 10243
Forging Goodness F

Length dimensions: + 1.7 / -0.8
Thickness dimensions: + 1.2 / -0.6
Widths / Diameter: + 1.3 / -0.7
Deflection 0.9
Offset / Off-center 0.8
Burr approach / bleed depth 1.0
Degradation / hole dimensions to DIN 1.6 / 0.8
Unmeasured radii 3
Forge cone: 3 ° outside / 3 ° inside

Material: 42CrMo4 tempered
Tensile strength $R_m > 900 \text{ N/mm}^2$
Weight: 1.17 kg
Delivery condition: blasted



RAW PART DRAWING

Allgemeintoleranzen nach/ admissible tolerance to:	Oberflächenangaben nach/surface according to ISO 1302								Länge des kürzeren Schenkels/ measure of short blade ≤				
	Nennmaß/nominal size ≤ Längenmaße/linear measure								10	50	120	400	
ISO 2768 - mK	0,5-3	6	30	120	400	1000	2000	4000	±1°	±30'	±20'	±10'	
Spanen, Umformen/chipping, forming	±0,1	±0,1	±0,2	±0,3	±0,5	±0,8	±1,2	±2,0					
Erstellt/created: 17.12.2018	Geprüft/verified: 17.12.2018			Maßstab/scale				1:1	Blatt/sheet				
DESCRIPTION								Kurvensegment Rohteil PB03C					
								cam segment					
								CODE				1/1	
								0-905-323-654				A2	