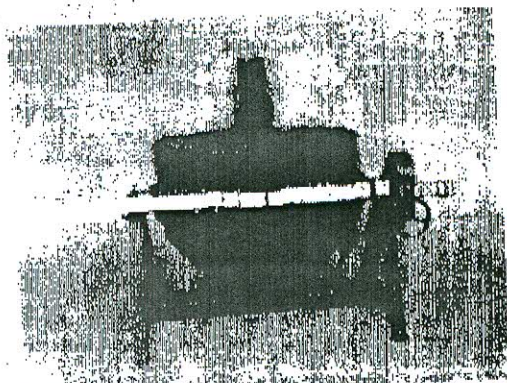
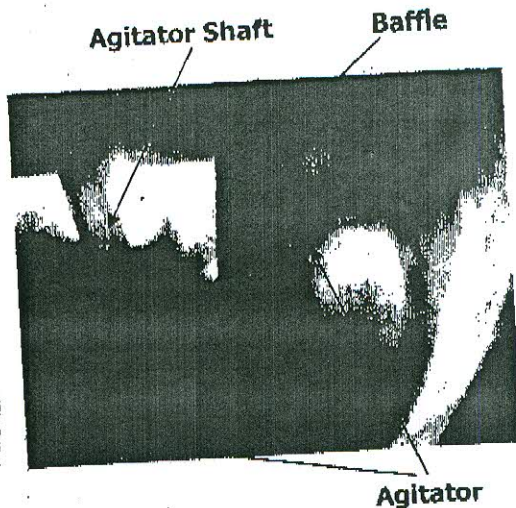


# Specification Sheet for Jacketed Mixing Kettle with Agitator and tilting Mechanism

Sr. No.	Description	Requirement
1.	Quantity	02 No.
2.	Working Temperature	150° C
3.	Effective volume	600 lit
4.	Material to be dried	Slurry with more than 70 % solid particles/Powder
5.	Vessel Type	Jacketed Type for heating and cooling
6.	Heating/Cooling media	Steam in jacket @ 5 bar Inlet/Outlet pipe for steam/Condensate of 1 inch size for heating and cooling water for cooling. Separate port must be provided for inlet and outlet of both heating and cooling media
7.	Vessel, Agitator, Baffle & Frame Material	SS 316L
8.	Vessel and Jacket thickness	Recommendation by supplier.
9.	Insulation around Jacket	Rock wool 50 mm
10.	Agitator	Sweeping type agitator without scrappers, one baffle gap between vessel and agitator should not more than 10 mm
11.	Tilting	Manual Tilting option up to 180 degree (90 degree on either side) for pan is to be provided for loading/unloading of material.
12.	Pouring lip	Rectangular shape open top with separate lids (not hinged)
13.	Agitator and vessel internal surface finish	Ra 1.6
14.	Electric Motor	Recommended by supplier as per required stirring power. Motor should be explosion proof Eex de II B T4 IP-65, F class insulation.
15.	Stirring speed	0-40 rpm ( variable speed control)
16.	Control panel	Explosion proof electric control panel for 20 m remote installation, showing RPM of stirrer, Temperature and emergency push button
17.	Temperature sensor	Thermo well with temperature probe at bottom of vessel
18.	Gear system	Gear system for tilting and electric motor must be covered
19.	Base plate	Base plate for fixed installation
20.	Additional Accessories	Machine should equipped with pressure gauge, temperature gauge and safety valve tilting should be made easy.



Note:



- Technical literature, product details, manufacturing drawing and detail of origin are to be provided with quotation.
- The above figures of jacketed Kettle/Tank assembly and agitator and Baffle are just for illustration

### Pre-Shipment Inspection

- The supplier will arrange Pre-shipment inspection of two engineers at manufacturer premises for one week. However buyer will bear expenses for air ticket and boarding & lodging.