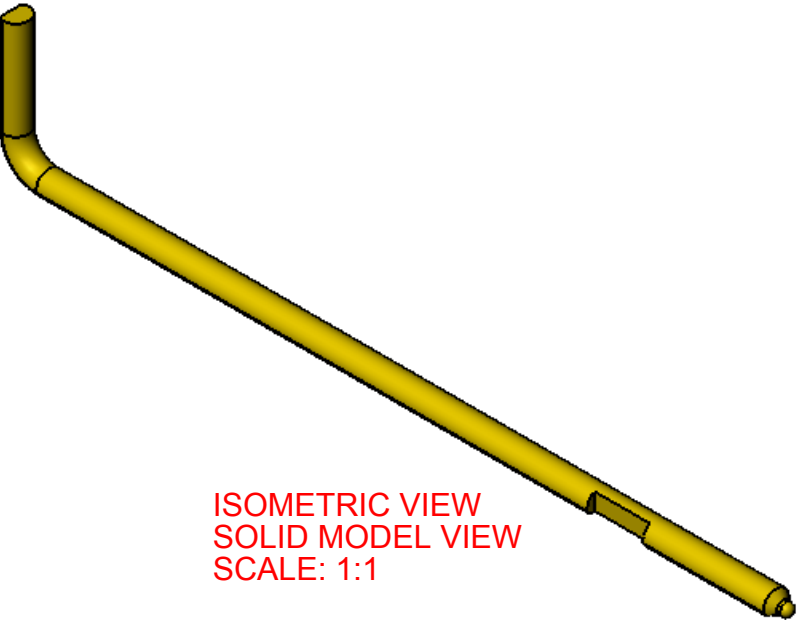


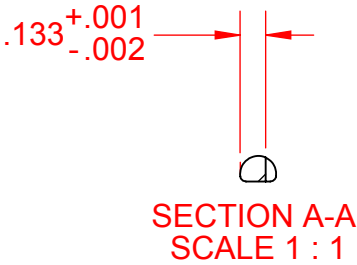
LIMITED RIGHTS IN DATA  
THIS DOCUMENT CONTAINS PROPRIETARY AND TRADE  
SECRET DATA OF THE KABA MAS LLC.  
IT MAY NOT BE USED, REPRODUCED OR RELEASED IN  
WHOLE OR IN PART FOR ANY PURPOSE OTHER THAN  
THAT AUTHORIZED BY THE KABA MAS LLC.  
AUTHORIZATION MUST BE IN WRITING.

SAME AS AX

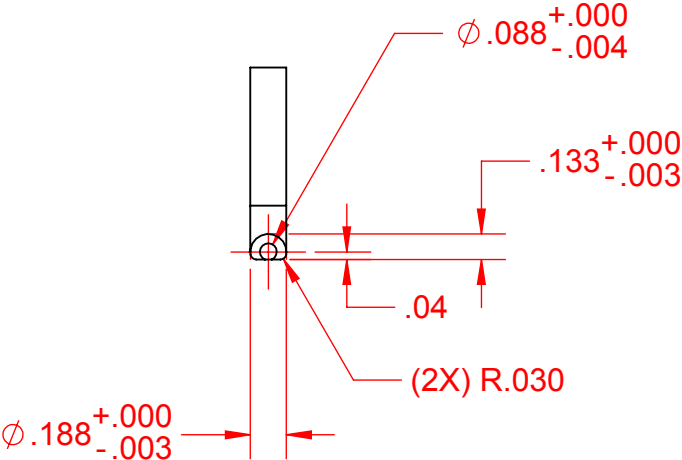
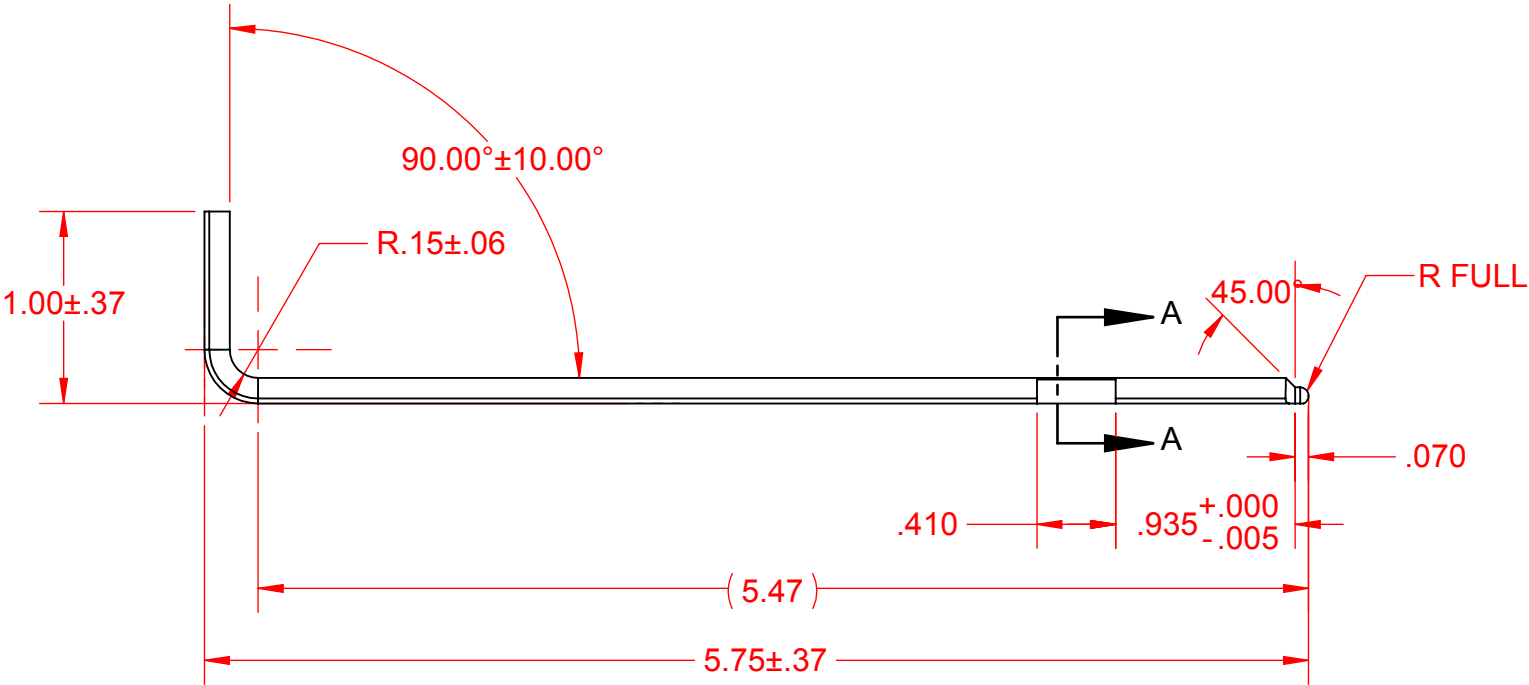
REV.	ECN	DESCRIPTION	REV. BY	CHKD. BY	DATE
A	1680	RELEASE NEW CHANGE KEY, UNIVERSAL LONG REPLACES BOTH 1315-A & 1316	KCS	BTC	10Jun13



ISOMETRIC VIEW  
SOLID MODEL VIEW  
SCALE: 1:1



SECTION A-A  
SCALE 1 : 1



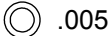
- NOTES:
- MATERIAL TO BE 12L14 LOW CARBON DRAWN STEEL
  - FINISH: BLACK OXIDE

REF. ASME Y14.5-2009



THIRD ANGLE  
PROJECTION

DO NOT SCALE PRINT  
UNLESS OTHERWISE  
SPECIFIED (U.O.S.):  
DIMENSIONS: INCHES  
TOLERANCES:  
.XX ± .01  
.XXX ± .005  
FRACTIONS ± 1/64  
ANGLES ± 1.0°  
DRAFT 1° MAX



.005

MACHINED SURFACE



749 W. SHORT ST.  
LEXINGTON, KY 40508  
PHONE 859-253-4744

TITLE	KEY, CHANGE, LONG, 3 & 4 WH UNIV, RoHS	BY	DATE
MATERIAL	SEE NOTE 1	DR.	KCS 06Jun13
SCALE	2:1	CK.	BTC 06Jun13
SHEET	1 OF 1	APP.	BTC 06Jun13
SIZE	B	REV.	A
PT.NO.	705161		

MUST BE IN COMPLIANCE WITH THE LATEST LEVEL EU DIRECTIVE 2002/95/EC (RoHS).