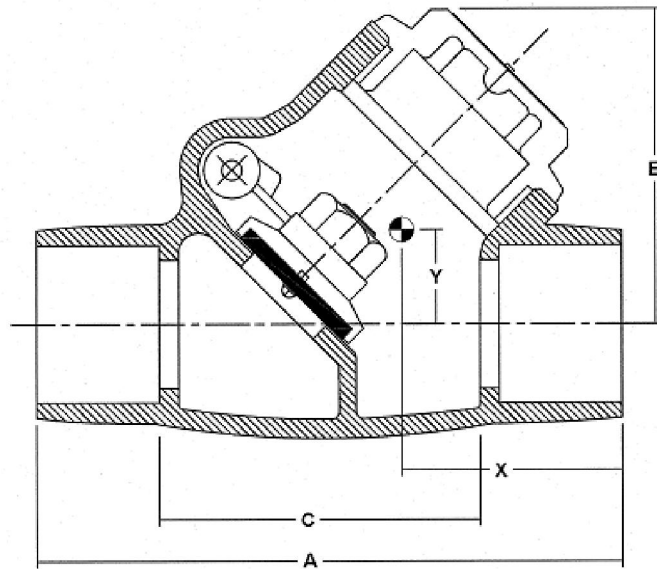


NOTE(S):  
 1. CENTER OF GRAVITY VARIES WITH MANUFACTURER

DATASHEETS:

- PV53-Z0D-100
- PV53-Z0D-101
- PV53-Z0D-102
- PV53-Z0D-103
- PV53-Z0D-104
- PV53-Z0D-105
- PV53-Z0D-106
- PV53-Z0D-111
- PV53-Z0D-112
- PV53-Z0D-114

Data Sheet #	Valve Type	Size	Press. Class/Rating	End Prep	Material	A	B	C	D	H	X	WT
						inch (mm)	inch (mm)	inch (mm)	inch (mm)	inch (mm)	inch (mm)	lbs. (kg)
100	Ball	1/2"	600 CWP	Soldered	Bronze	2.87 (72.9)	3.87 (98.3)	1.75 (44.5)	0.50 (12.7)	0.50 (12.7)	1.40 (35.6)	0.71 (0.33)
101	Ball	3/4"	600 CWP	Soldered	Bronze	3.87 (98.3)	4.87 (123.7)	2.12 (53.8)	0.75 (19.1)	0.50 (12.7)	1.90 (48.3)	1.44 (0.66)
102	Ball	1"	600 CWP	Soldered	Bronze	4.50 (114.3)	4.87 (123.7)	2.25 (57.2)	1.00 (25.4)	0.75 (19.1)	2.00 (50.8)	1.91 (0.88)
103	Ball	1-1/2"	600 CWP	Soldered	Bronze	5.25 (133.4)	8.00 (203.2)	3.06 (77.7)	1.50 (38.1)	0.75 (19.1)	2.50 (63.5)	3.99 (1.84)
104	Ball	2"	600 CWP	Soldered	Bronze	6.37 (161.8)	8.00 (203.2)	3.25 (82.6)	2.00 (50.8)	1.00 (25.4)	3.00 (76.2)	5.71 (2.64)
105	Ball	2-1/2"	600 CWP	Soldered	Bronze	7.51 (190.8)	8.00 (203.2)	3.72 (94.5)	2.50 (63.5)	1.00 (25.4)	3.60 (91.4)	15.53 (7.17)
106	Ball	3"	600 CWP	Soldered	Bronze	8.25 (209.6)	8.00 (203.2)	4.12 (104.6)	3.00 (76.2)	1.50 (38.1)	4.00 (101.6)	16.74 (7.73)
111	Ball	3/4"	CL800	Socket Weld	SS	3.68 (93.5)	5.53 (140.5)	3.40 (86.4)	0.75 (19.1)	0.38 (9.5)	1.75 (44.5)	4.00 (1.85)
112	Ball	1"	CL800	Socket Weld	SS	4.19 (106.4)	6.53 (165.9)	4.80 (121.9)	1.00 (25.4)	0.50 (12.7)	2.00 (50.8)	5.70 (2.63)
114	Ball	2"	CL800	Socket Weld	SS	5.86 (148.8)	8.40 (213.4)	5.47 (138.9)	2.00 (50.8)	1.00 (25.4)	2.50 (63.5)	27.60 (12.74)



NOTES

- 1 CENTER OF GRAVITY LOCATION IS APPROXIMATE AND ONLY USED FOR ANALYTICAL PURPOSES. THE SUPPLIER IS NOT REQUIRED TO ADHERE TO THIS DIMENSION.
- 2 DRAWING IS NOT TO SCALE.

PV53 Check Valve Datasheet Information							
Data Sheet #	Size	A	B	C	X	Y	WT
	inch	inch	inch	inch	inch	inch	Lbs.
	(mm)	(mm)	(mm)	(mm)	(mm)	(mm)	(kg)
120	1/2	2.44	1.69	1.69	0.92	0.4	0.6
	(15)	(62)	(43)	(43)	(23)	(10)	(0.27)
122	1	3.56	2.31	2.31	1.34	0.58	1.57
	(25)	(90)	(59)	(59)	(34)	(15)	(0.71)
123	2	5.25	3.94	3.94	1.98	0.85	5.34
	(50)	(133)	(100)	(100)	(50)	(22)	(2.42)

PV53-V0-002

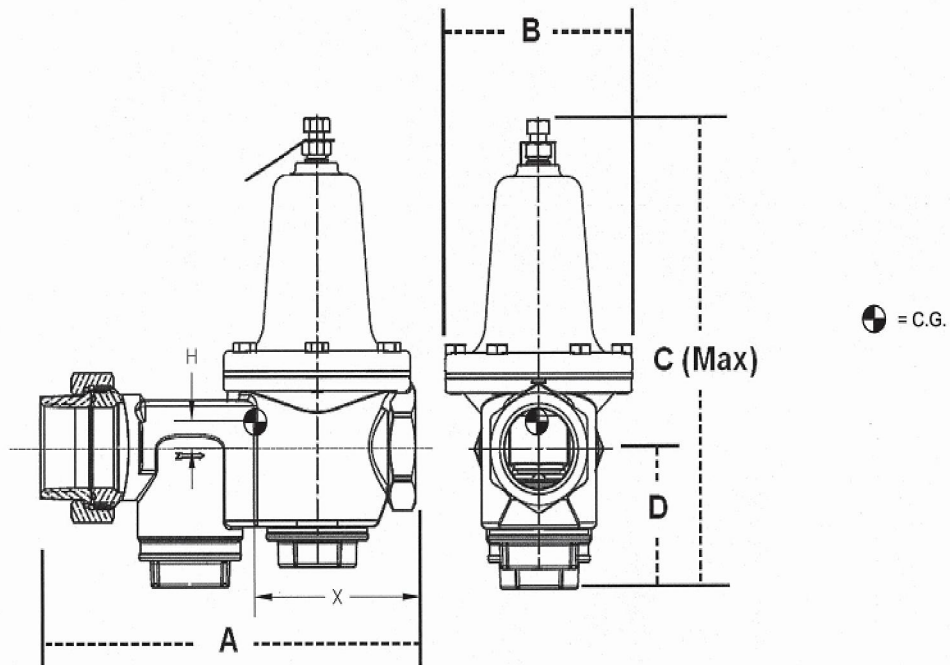
NOTE(S):

CENTER OF GRAVITY VARIES WITH MANUFACTURER

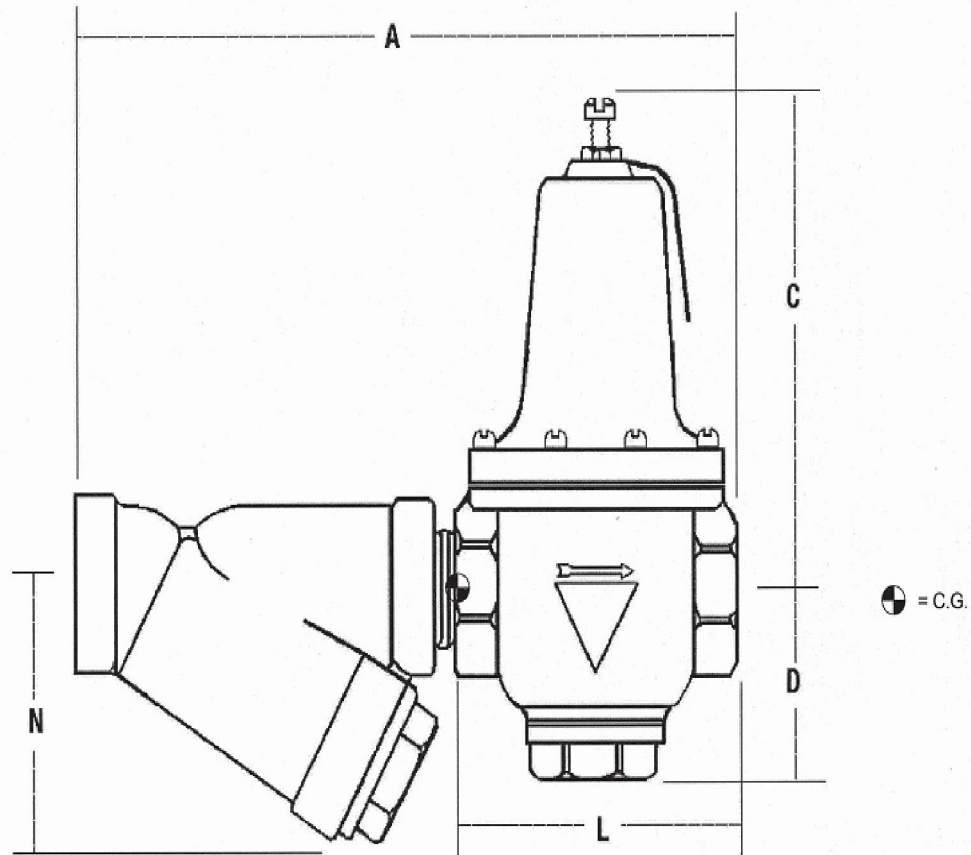
DATASHEET(S):

PV53-Z0D-132

PV53-Z0D-134



PV53 Pressure Reducing Valve Datasheet Information						PV53 Pressure Reducing Valve Drawing Data				Weight (lbs.)	Center of Gravity	
Data Sheet #	Valve Type	Size	Pressure ng	Material	End/Prep	A inch	B inch	C inch	D inch		H	X
132	Pressure Reducing	1.00"	300 CWP	Bronze	Threaded	6 5/8	4	7 3/8	2	6.0	3.6"	1.0"
134	Pressure Reducing	2.00"	300 CWP	Bronze	Threaded	10 7/8	6	12 1/4	3 1/4	23.0	5.6"	2.0"

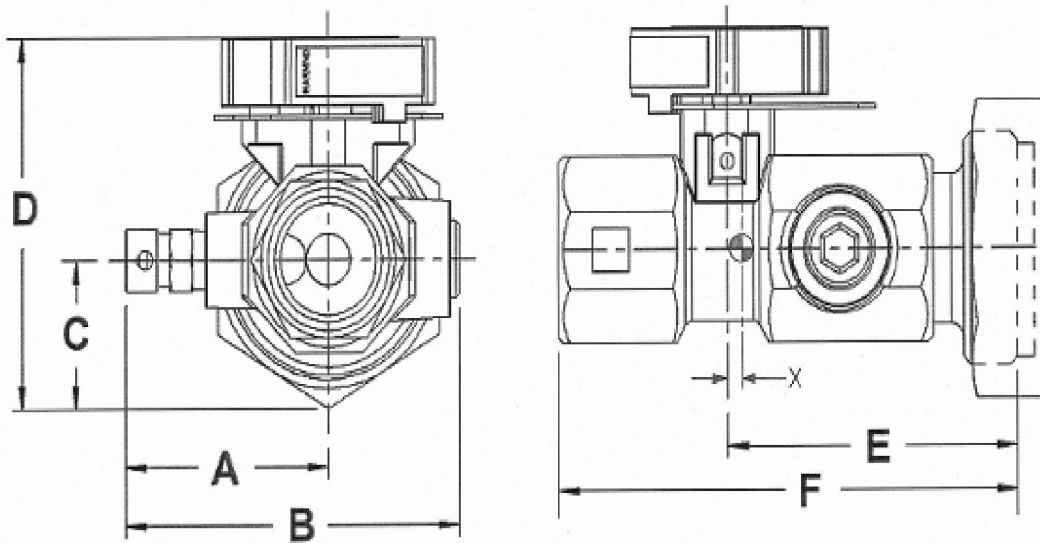


NOTE(S):  
 CENTER OF GRAVITY VARIES WITH  
 MANUFACTURER

DATASHEET(S):  
 PV53-Z0D-136

PV53 Pressure Reducing Valve Datasheet Information						PV53 Pressure Reducing Valve Drawing Data						
Data Sheet #	Valve Type	Size	Pressure ng	Material	End/Prep	A inch	C inch	D inch	L inch	N inch	WEIGHT	Center of Gravity
136	Pressure Reducing	3.00"	300 CWP	Bronze	Threaded	20 3/4	12 3/4	4 1/8	10 1/2	6 3/4	95	

PV53-V0-004

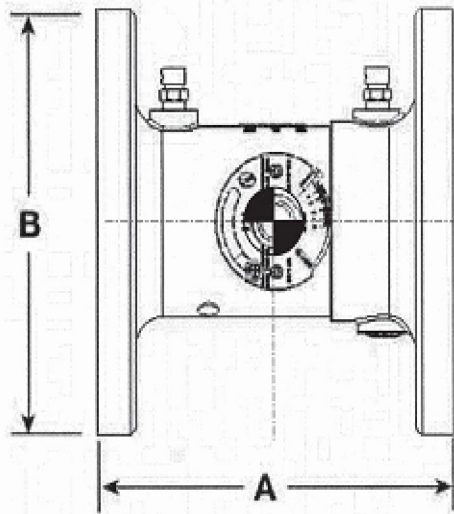


NOTE(S):  
 CENTER OF GRAVITY VARIES WITH  
 MANUFACTURER

DATASHEET(S):  
 PV53-Z0D-201  
 PV53-Z0D-202

PV53 Balancing Valve Datasheet Information						PV53 Balancing Valve Drawing Data							
Data Sheet #	Valve Type	Size	Pressure Class/Rating	Material	End/Prep	A inch	B inch	C inch	D inch	E inch	F inch	Weight lbs	X Center of Gravity
201	Balancing	1.00"	300 psi	Brass	Threaded	2.18	3.42	0.81	2.51	2.62	4.36	3.40	0.25
202	Balancing	2.00"	300 psi	Brass	Threaded	2.70	4.46	1.13	4.02	4.20	6.47	10.30	0.50

PV53-V0-005



☐ = C.G.

NOTE(S):  
 CENTER OF GRAVITY VARIES WITH  
 MANUFACTURER

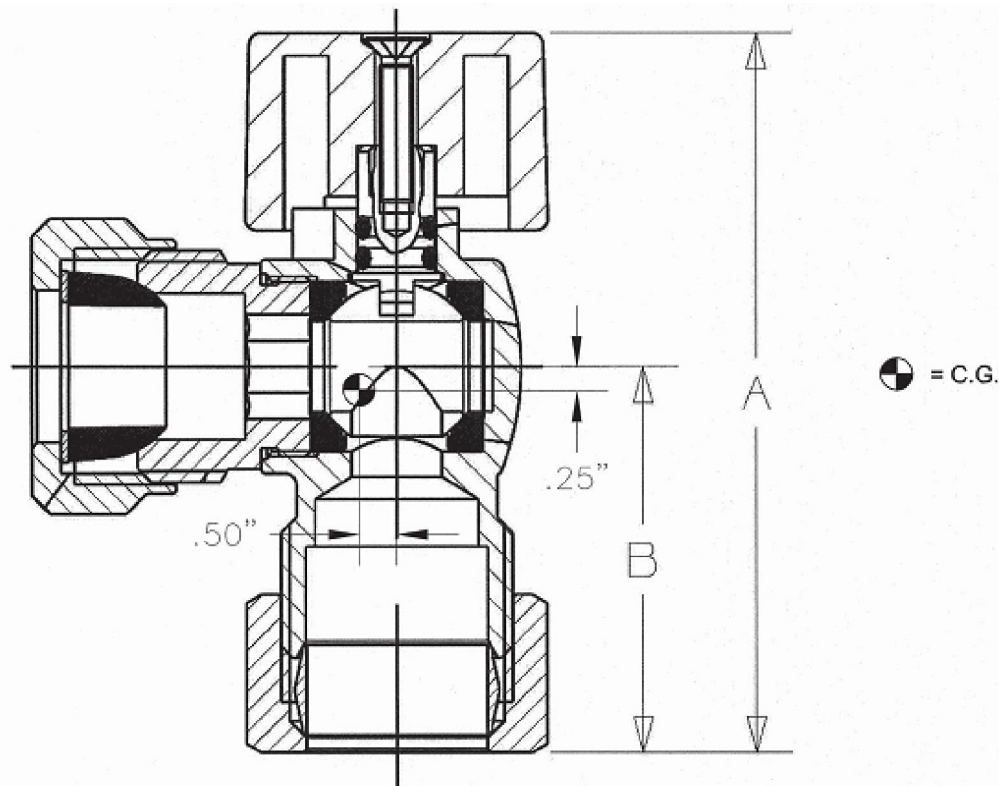
DATASHEET(S):  
 PV53-Z0D-203

PV53 Balancing Valve Datasheet Information						PV53 Balancing Valve Drawing Data		
Data Sheet #	Valve Type	Size	Pressure Class/Rating	Material	End/Prep	A inch	B inch	Weight lbs
203	Balancing	3.00"	175 CWP	Ductile Iron	Flanged	6.72	7.50	29

PV53-V0-006

NOTE(S):  
 CENTER OF GRAVITY VARIES  
 WITH MANUFACTURER

DATASHEET(S):  
 PV53-Z0D-099

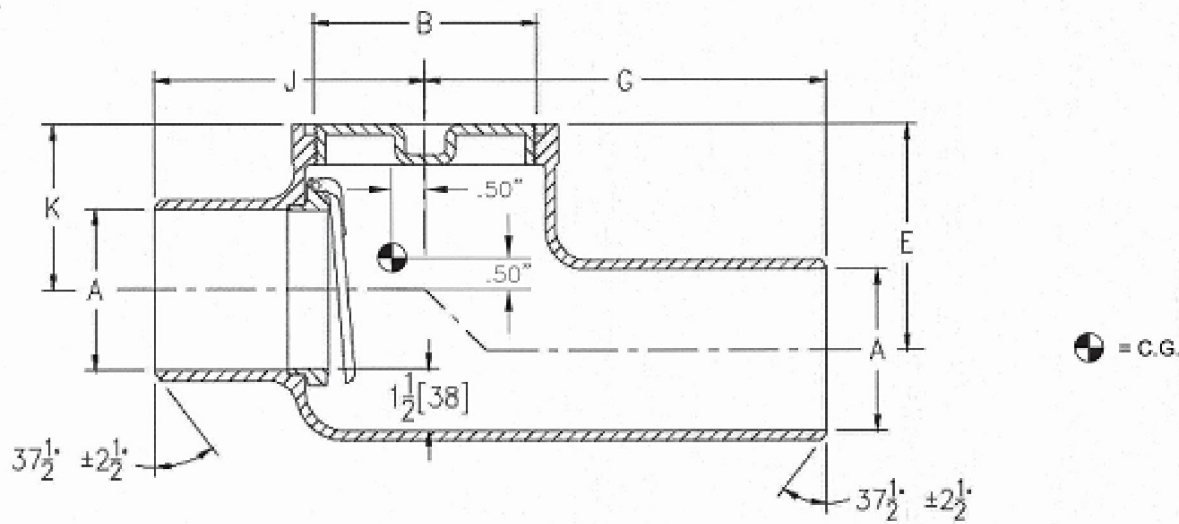


PV53 Stop Valve Datasheet Information						PV53 Stop Valve Drawing Data			
Data Sheet #	Valve Type	Inlet x Outlet inch	Pressure Class/Rating	Material	End/Prep	A inch	B inch	Weight lbs	Center of Gravity
099	Stop	1/2 x 3/8 OD	600 CWP	Brass	Soldered x Compression	2.45	1.29	0.18	

PV53-V0-007

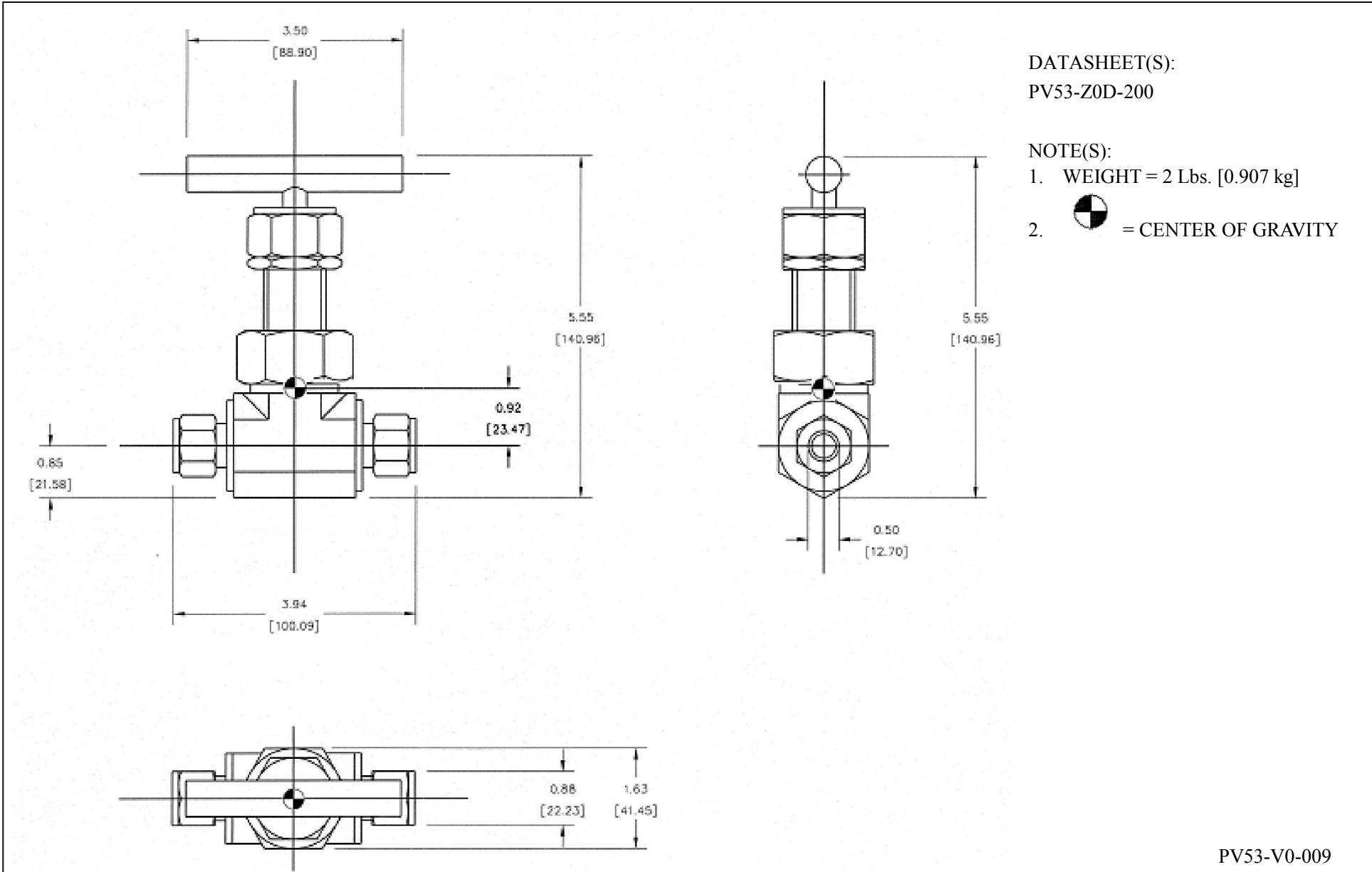
NOTE(S):  
 CENTER OF GRAVITY VARIES  
 WITH MANUFACTURER

DATASHEET(S):  
 PV53-Z0D-210

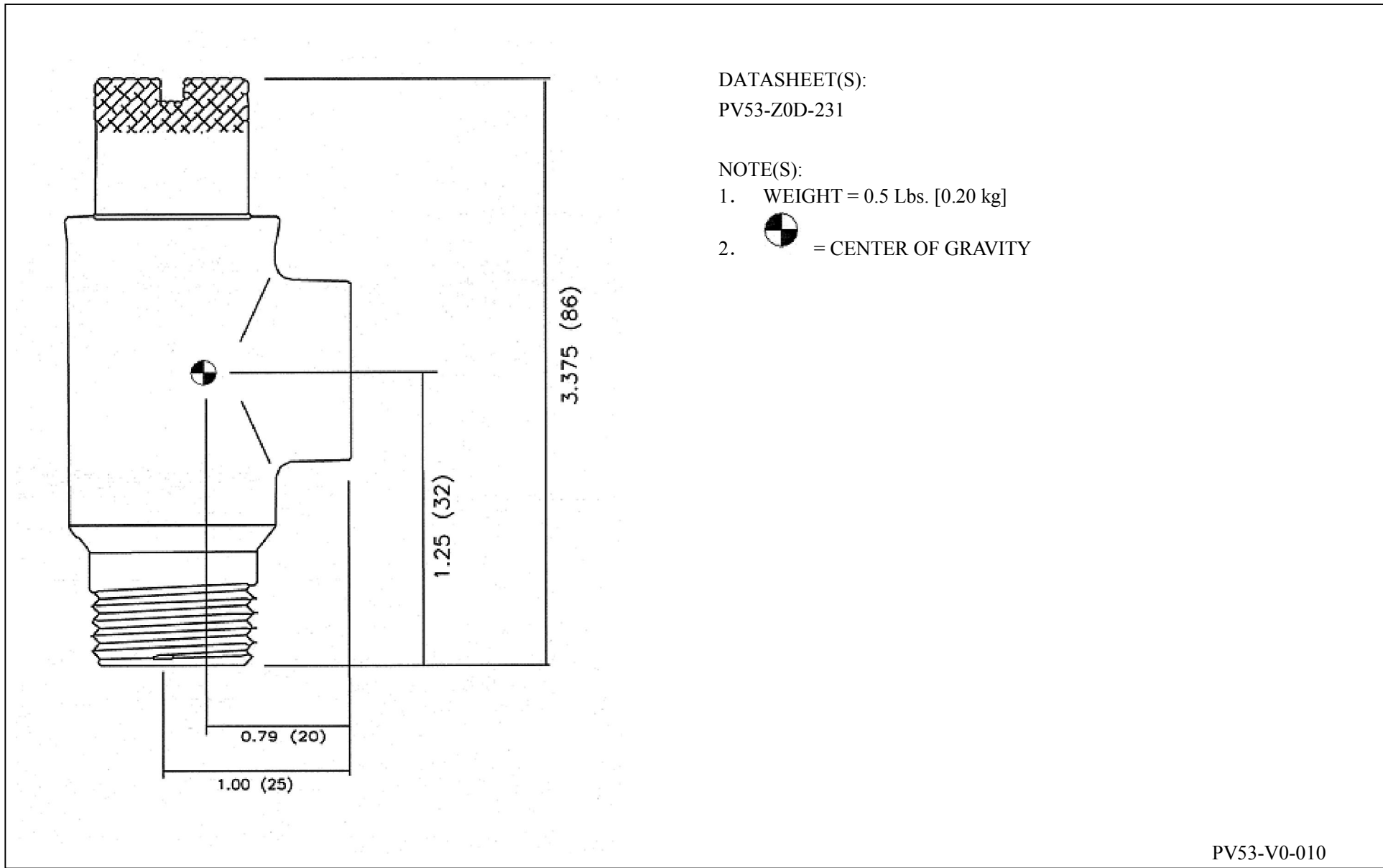


PV53 Backwater Valve Datasheet Information						PV53 Backwater Valve Drawing Data							
Data Sheet #	Valve Type	Size	Pressure Class/Rating	Material	End/Prep	A Inch	B Inch	E Inch	G Inch	J Inch	K Inch	Weight lbs	Center of Gravity
210	Backwater	4.00"	Mfg. Std.	Stainless Steel	Butt Weld	4	5	5 5/8	8 1/2	6 3/4	4 1/8	40	

PV53-V0-008




PV53-V0-009

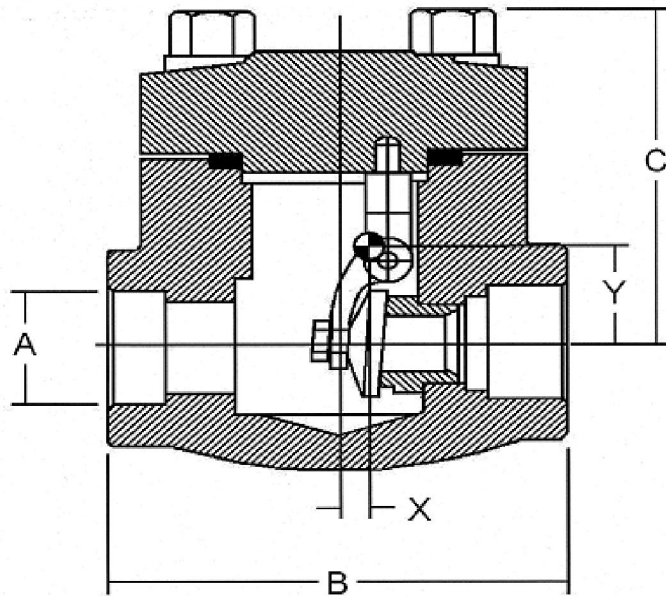


DATASHEET(S):  
PV53-Z0D-231

NOTE(S):

1. WEIGHT = 0.5 Lbs. [0.20 kg]
2.  = CENTER OF GRAVITY

PV53-V0-010



NOTE(S):

1. CENTER OF GRAVITY LOCATION IS APPROXIMATE AND ONLY USED FOR ANALYTICAL PURPOSES. THE SUPPLIER IS NOT REQUIRED TO ADHERE TO THIS DIMENSION.
2. DRAWING IS NOT TO SCALE.

PV53 Check Valve Datasheet Information

Data Sheet	Size	A	B	C	X	Y	WT
	inch (mm)	inch (mm)	inch (mm)	inch (mm)	inch (mm)	inch (mm)	Lbs. (kg)
125	1	1.33	4.37	3.07	0.26	1.05	5.1
	(25)	(34)	(111)	(78)	(7)	(27)	(2.31)
126	2	2.41	6.77	4.65	0.4	1.59	19.6
	(50)	(61)	(172)	(118)	(10)	(40)	(8.9)

PV53-V0-013