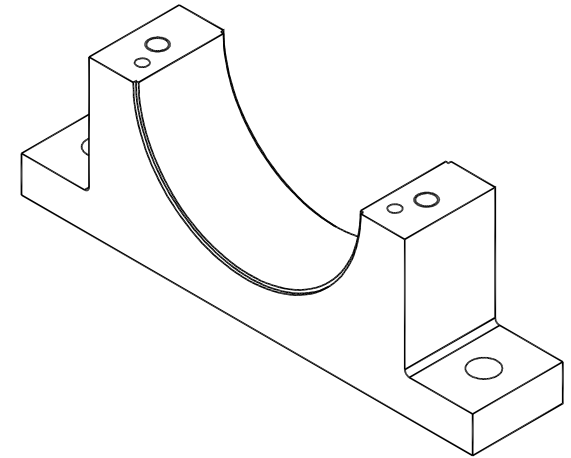
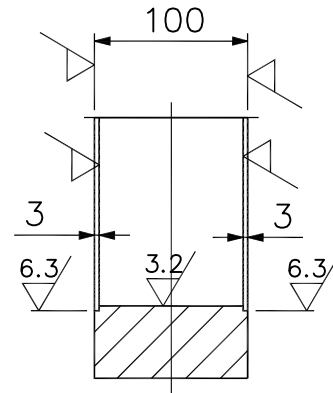
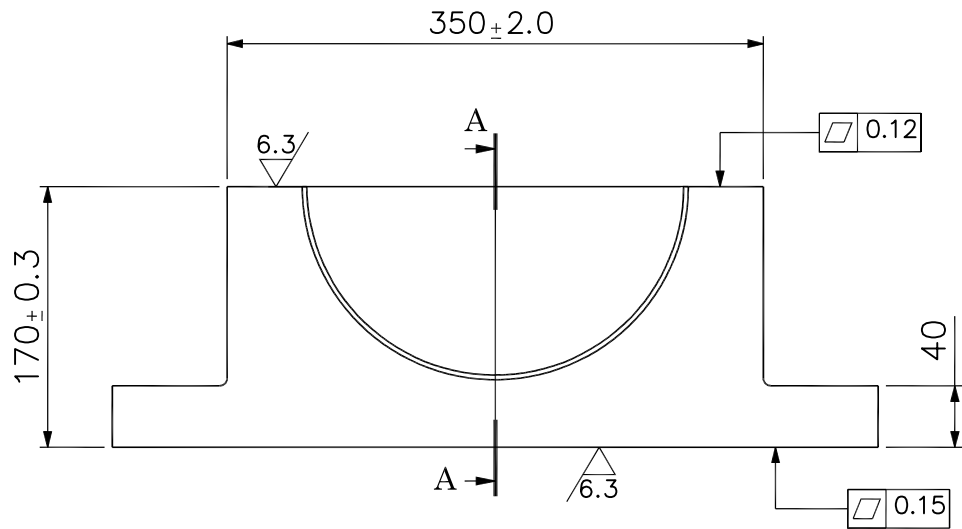


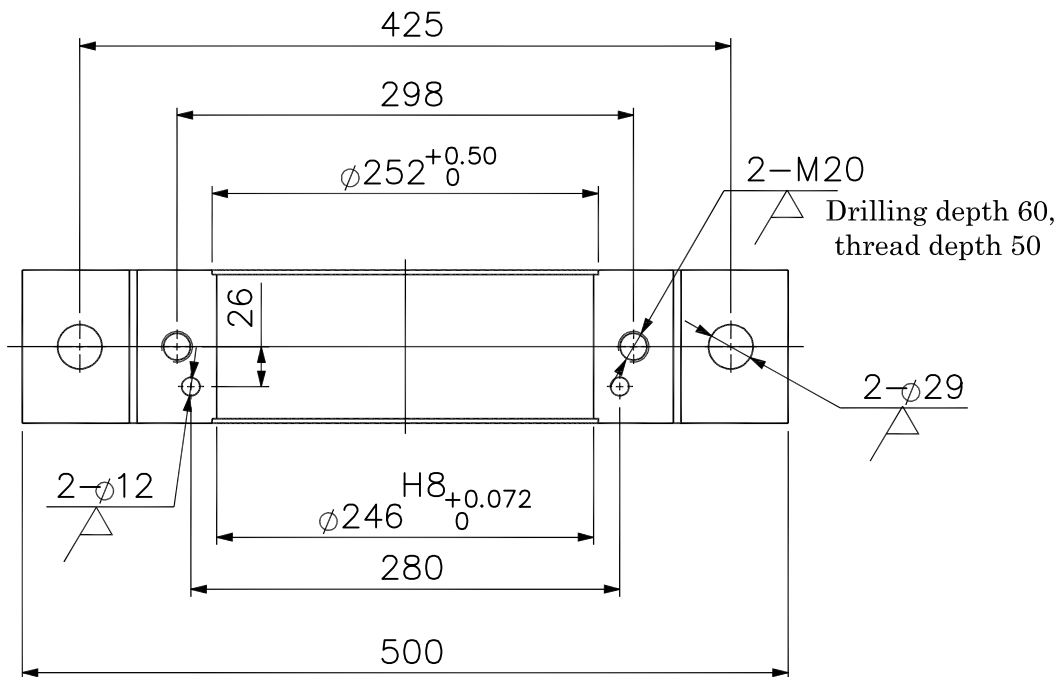


Single Cradles with 4 flange bearing liners

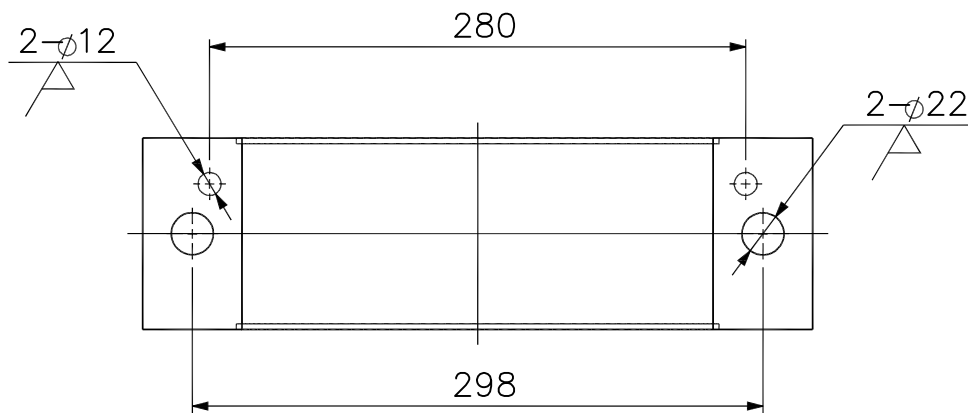
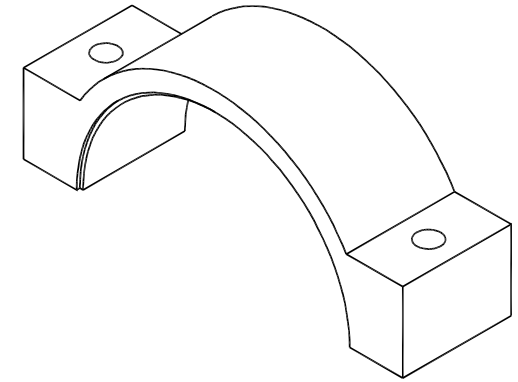
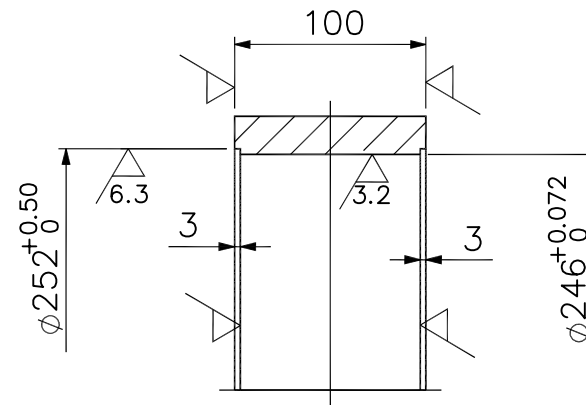
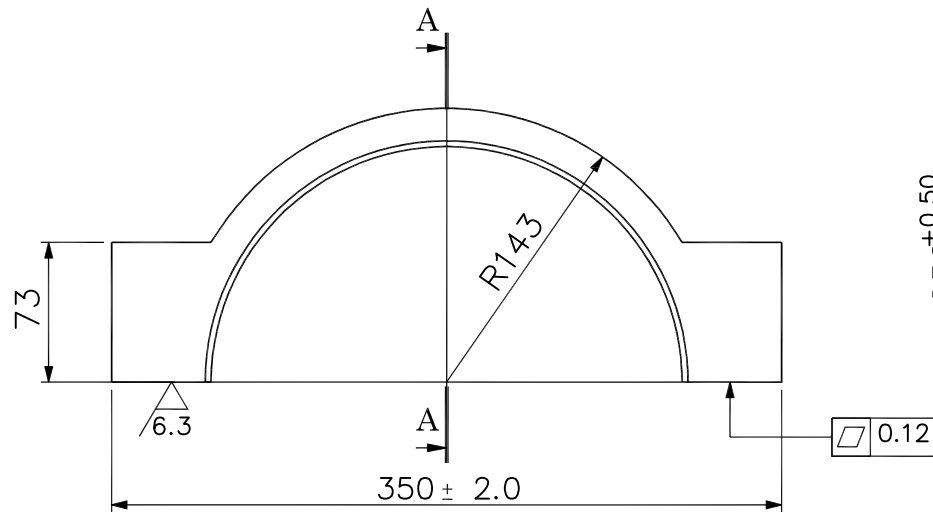




LOAD CASES				
	SPEED (g/min)	RADIAL FORCE (kN)	AXIAL FORCE (kN)	CYCLES *
MAX STATIC	Quasi-static	1200	26	-



LOWER CRADLE				
01	26/08/2013	32 kg	S355 JR	DESCRIPTION
Rev:	DATE	Weigth	Material	MBA-240LSR-142-GLY
Design	MRC	JMB	-	
Checked	AEP	-	-	
Approved	JMB	-	-	
ALL PROPRIETARY RIGHTS IN THE SUBJECT MATTER HERE OF ARE RESERVED, AND NO PERMISSION IS GRANTED OR TO DISCLOSE REPRODUCE THIS PRINT IN WHOLE OR IN PART ,ANY OF THE INFORMATION TO OTHERS.				
SYMBOLS ISO		SIZE : A3		



1. The casting not affect its mechanical properties and the appearance of the casting defects.
2. Injection molding is not rounded R2-R3, not note the taper angle determined by the height.
3. Did not note the casting dimensional tolerances according to CT10.
4. Did not note the machining tolerance level by GB/T1804-C level.
5. Chamfering deburring.

SINGLE UPPER CRADLE				
01	26/08/2013	10.4 kg	S355 JR	DESCRIPTION
Rev:	DATE	Weigth	Material	MBA-240USR-142-GLY
Design	MRC	JMB	-	
Checked	AEP	-	-	
Approved	JMB	-	-	
ALL PROPRIETARY RIGHTS IN THE SUBJECT MATTER HERE OF ARE RESERVED, AND NO PERMISSION IS GRANTED OR TO DISCLOSE REPRODUCE THIS PRINT IN WHOLE OR IN PART, ANY OF THE INFORMATION TO OTHERS.				
SYMBOLE ISO		SIZE : A3		