

REVISION HISTORY						
ZONE	REV LOC	ECR NO	REV	DESCRIPTION	DFTG	DATE
X-X			B	Thickened support for brass mounting	XX	7/9/2013

		DESIGN	J.Alexander	04-15-2013	TITLE	
		DRAWN	J.Alexander	04-15-2013		
		CHECK'D	M. Whittington	04-15-2013		
		APPR'YD	M. Whittington	04-15-2013		
MATERIAL:						SX7: Inner Shell
FINISH:			WHERE USED			
INCHES		TOLERANCES		METRIC	PART NO.	DWG NO
.X = +/- .05		X. = +/- 1.2			XXXXXXX	D100413
.XX = +/- .03		.X = +/- .7				
.XXX = +/- .010		.XX = +/- .30				
ANGLE = +/- 1°		ANGLE = +/- 1°				
					SCALE: 1=1	SHEET: 2 of 2
						REV B

D

C

B

A

PART NO.

D

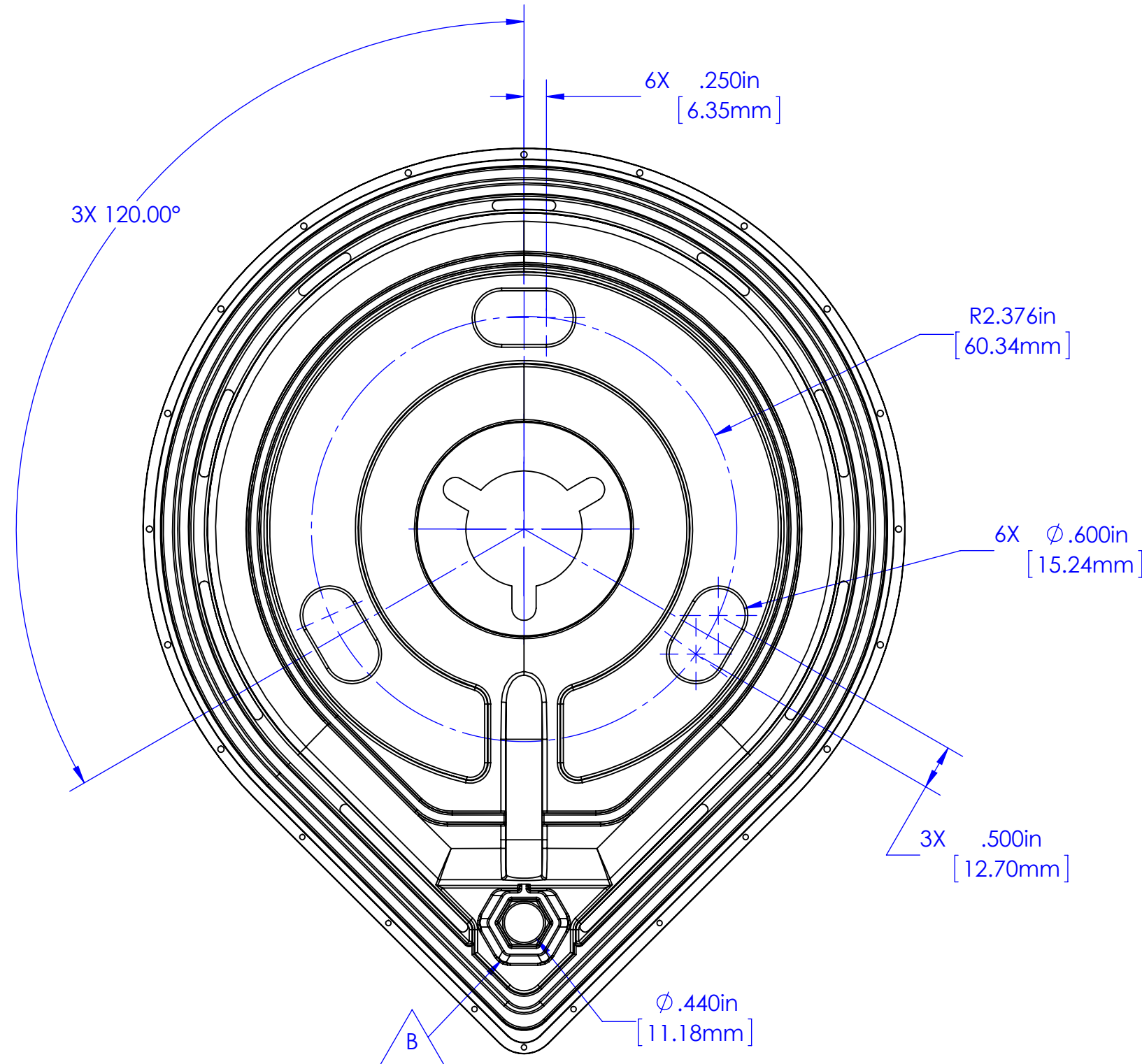
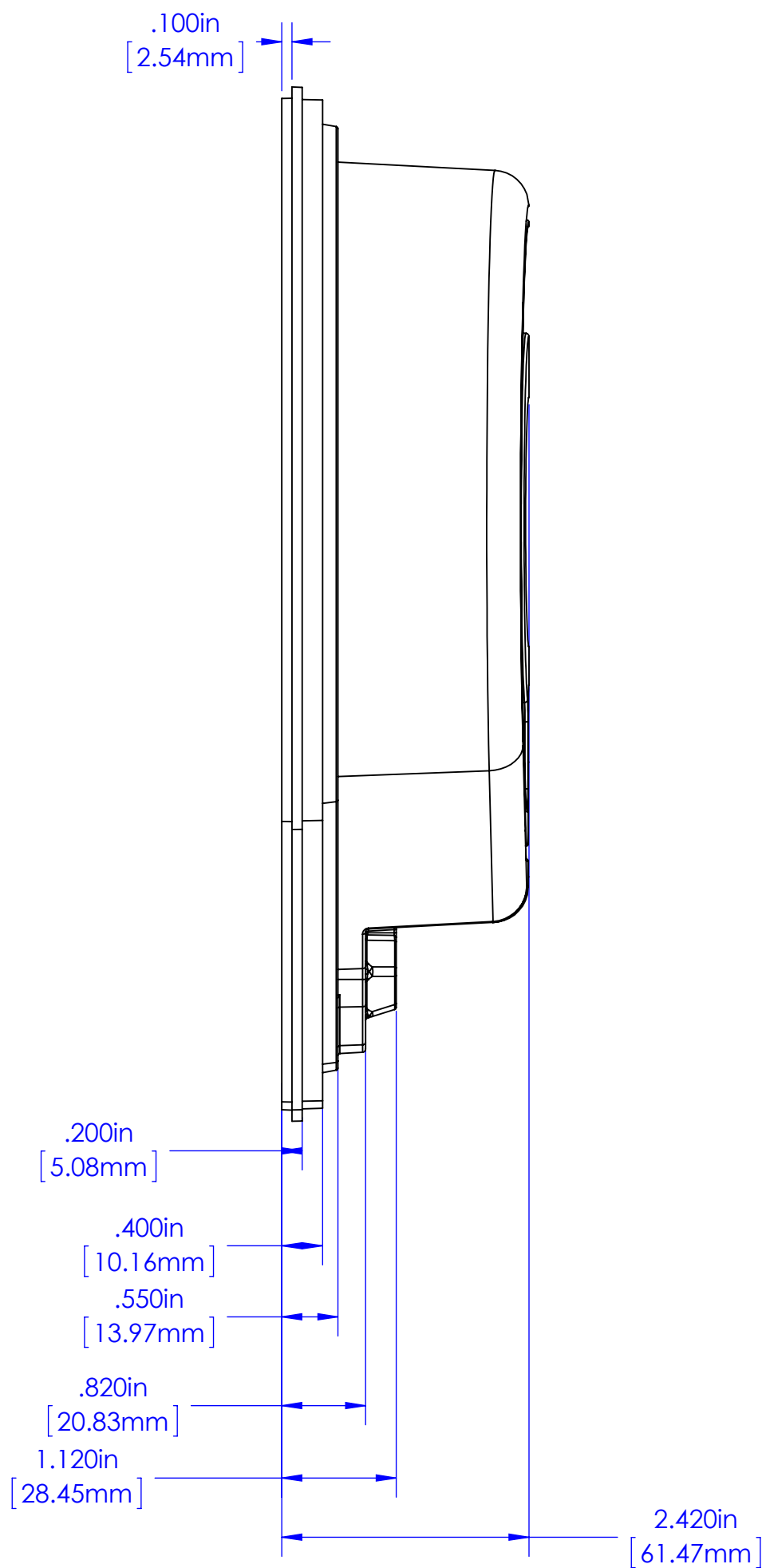
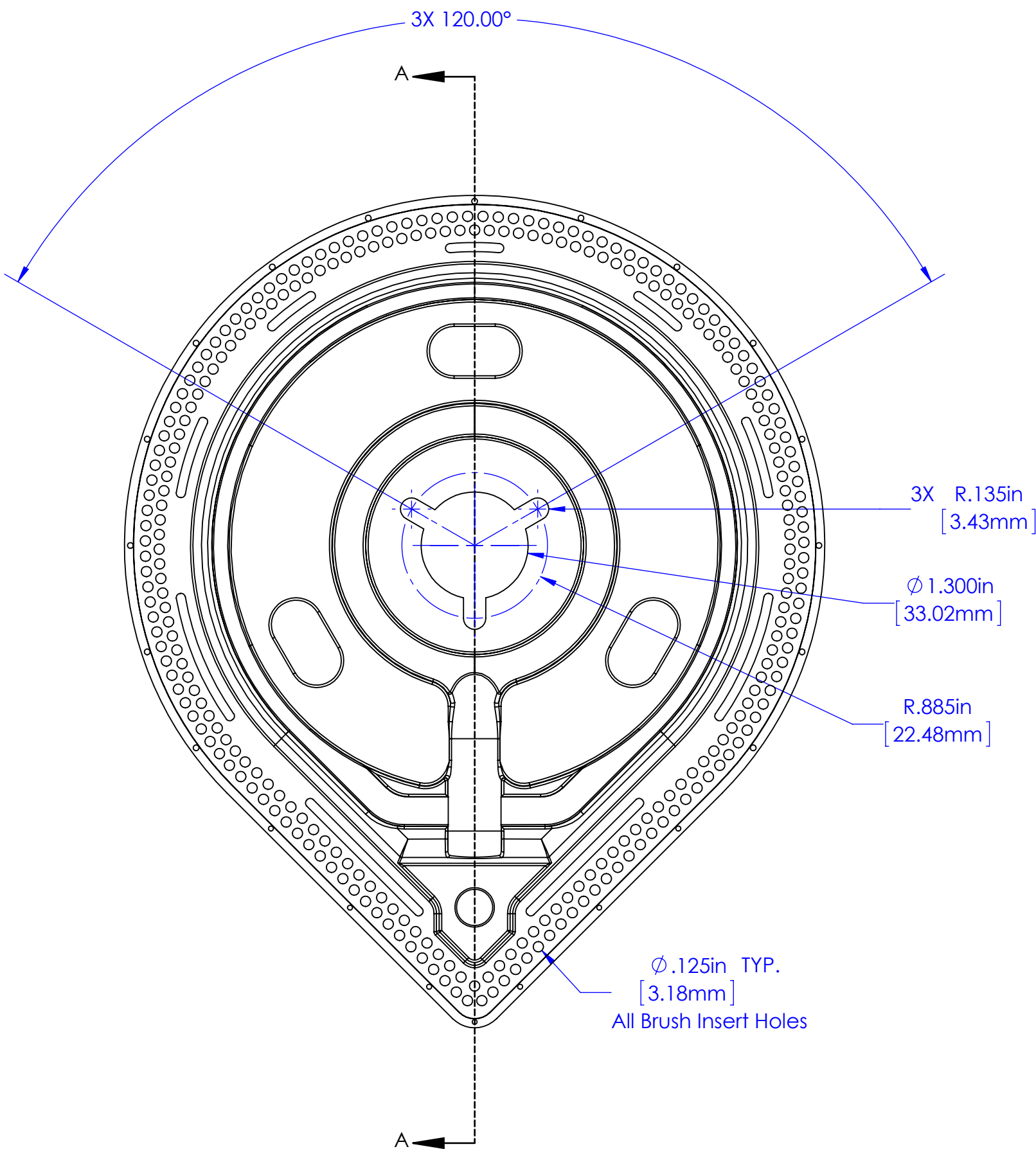
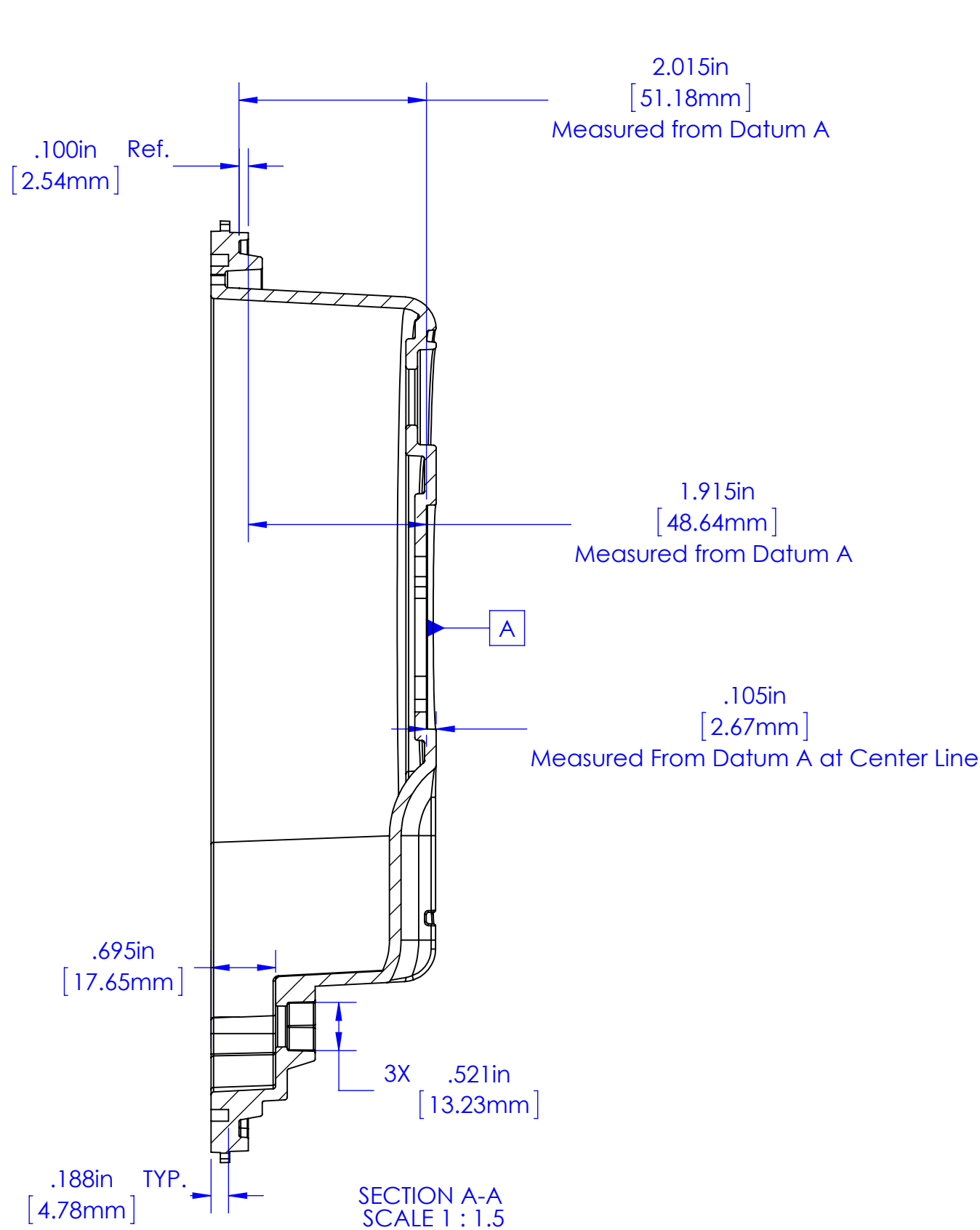
C

B

A

REVISION HISTORY						
ZONE	REV LOC	ECR NO	REV	DESCRIPTION	DFTG	DATE
B-2	B	07 11 13 001	B	thickened supports for brass mounting	JA	7/9/2013

- PLASTIC NOTES:
- PROCESS: INJECTION MOLD
MOLD MISMATCH: .0101 [.25].
MOLD FLASH: .010 [.25].
 - MATERIAL: PP 5%GLF
COLOR: PANTONE, REFLEX BLUE
 - TEXTURE: MT11020 OR EQUIVALENT
 - PART VOLUME: 16.19 in^3
 - [5] INDICATES EXTENT OF COSMETIC SURFACES.
 - FOR MORE DETAIL INFORMATION, REFER TO SOLID GEOMETRY.
 - DIMENSIONS ARE SHOWN IN INCHES WITH MILLIMETERS SHOWN IN [].



		DESIGN	J. Alexander	04-15-2013	TITLE	
		DRAWN	J. Alexander	04-15-2013		
		CHECK'D	M. Whittington	04-15-2013		
		APPR'VD	M. Whittington	04-15-2013		
MATERIAL:						SX7 Inner Shell
FINISH:			WHERE USED			
INCHES		TOLERANCES		METRIC	PART NO.	DWG NO
.X = +/- .05		X. = +/- 1.2			NM5630	D100413
.XX = +/- .03		.X = +/- .7				
.XXX = +/- .010		.XX = +/- .30				
ANGLE = +/- 1°		ANGLE = +/- 1°				
						SCALE: 1=1
						SHEET: 1 of 2
						REV
						B