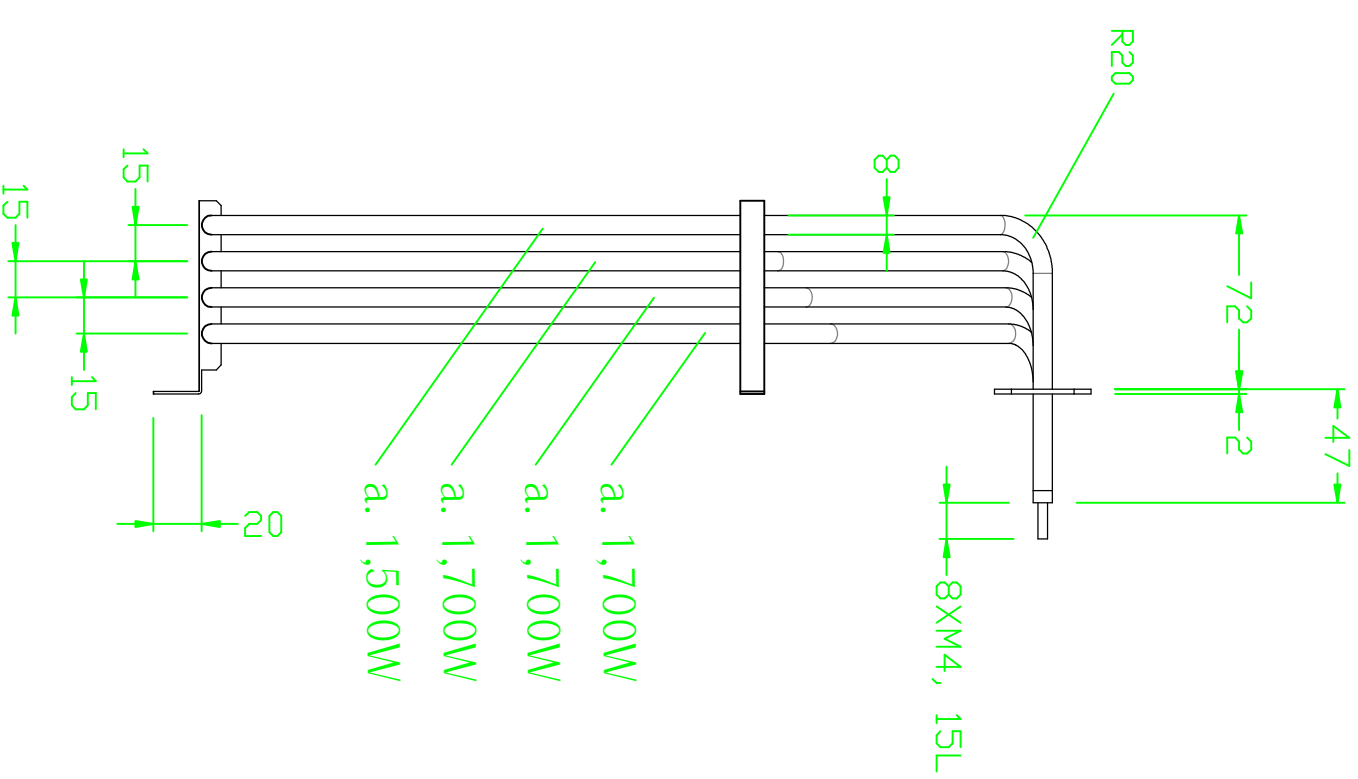
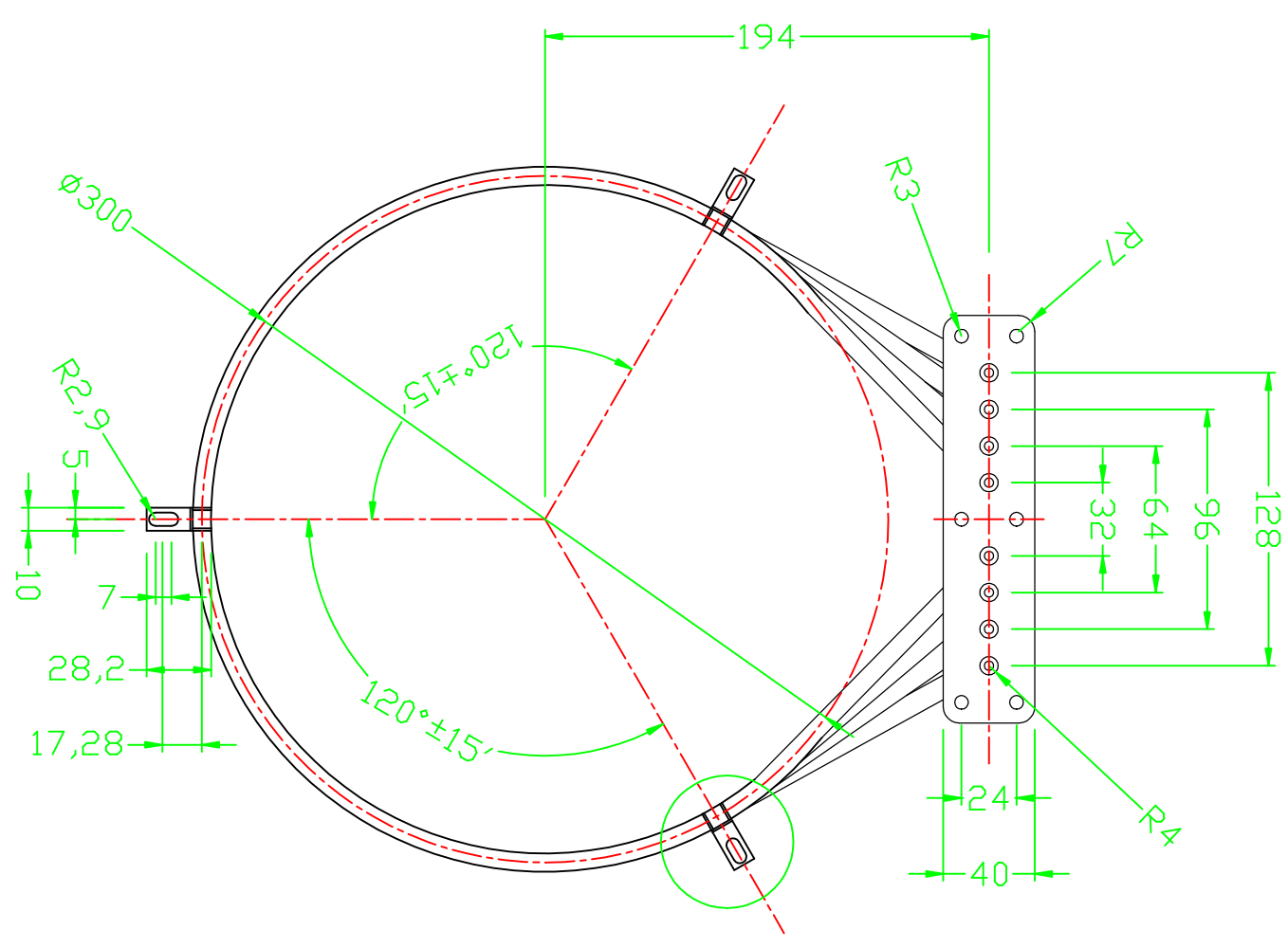
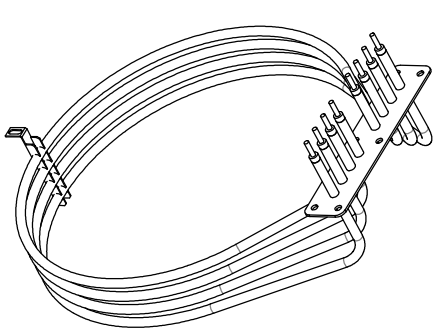


NO	DWG NAME	MATERIAL	QTY	REMARK
1				



- NOTE
1. SHEATH : AIS840 : THICKNESS : 0.5
 2. HEATING ELEMENT TO BE WISHSTAND > 1,500V AC FOR ONE SECOND WITHONT BREAK CUT OFF CURRENT 10mA
 3. INSULATION RESISTANCE : 10MOHMS MIN;
 4. LEAKAGA CURRENT TO BE 0.5mA MAX. WHILE ENERGIZED AT RATED VOLTAGE
 5. FLATNESS : 0.5 MAX :
 6. PROCESS : RADATING;
 7. DEVELOPED LENGTH 1011 REF;
 8. DISALIGNMENT DIVADON OF BOTHLEGS TOBE WITH 2.0mm
 9. ALL DIMENSIONS ARE IN mm.
 10. RATING VOLTAGE / POWER 220VAC / (1700W + 1700W + 1700W + 1500W ± 5%)

NO	DATE	DESCRIPTION	REMARK
MODEL	COS-5000AJ		FINISH SCALE
D'NAME	HEATER 6.6KW		PAINIT N
DWGNNO		DGN	CHK
			APP

KOSTEM

비밀이전
2014-11-17