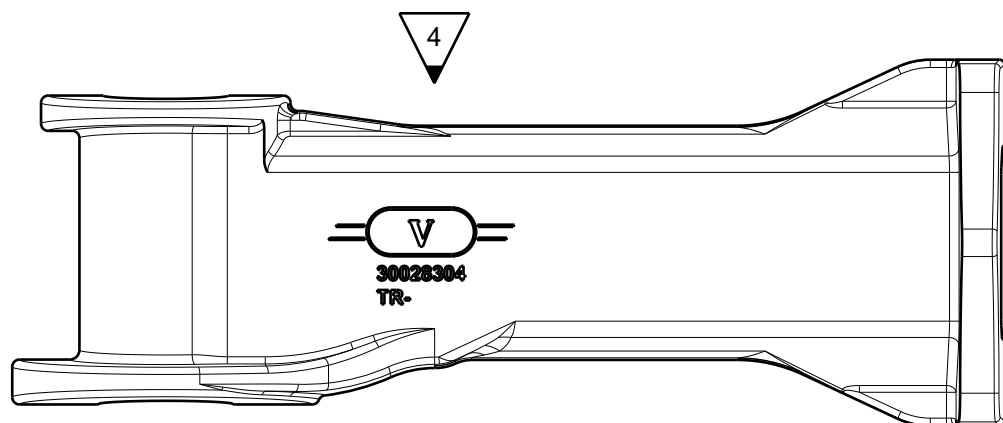
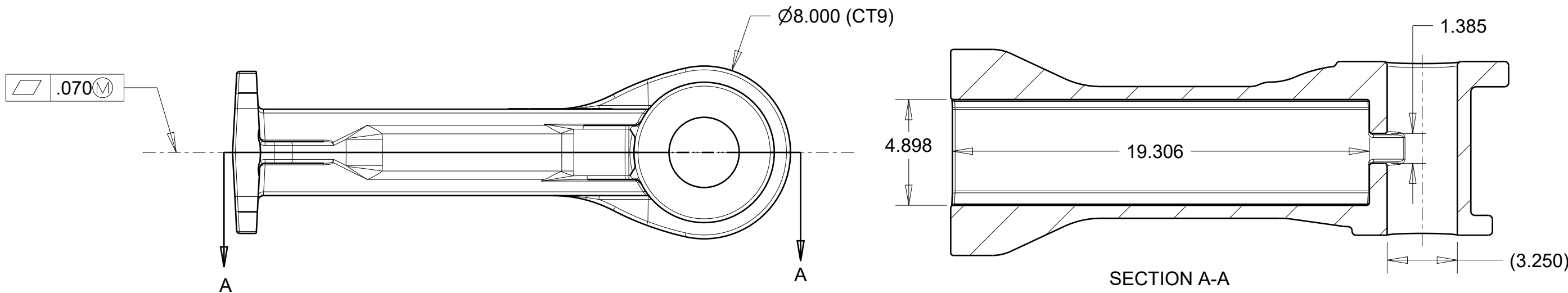
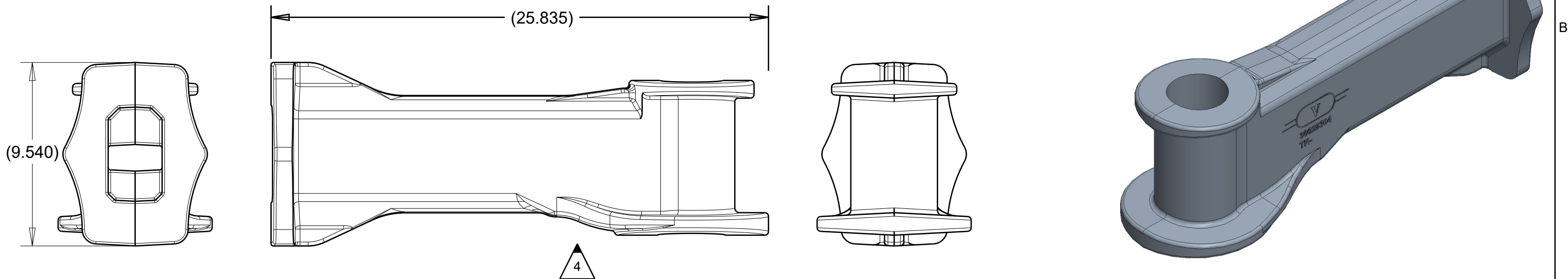


AS-CAST
 -AS PER GEOMETRY OF 30028304_AS_CAST.STP.
 -CASTING TOLERANCES MUST CONFORM TO ISO 8062 GRADE CT11 UNLESS SPECIFIED.
 -DRAWING INFORMATION ALWAYS VALID OVER STEP FILE.
 -USE A SANS SERIF FONT FOR ARTICLE/PART NUMBER AND MANUFACTURER LABEL [TR-MMY]

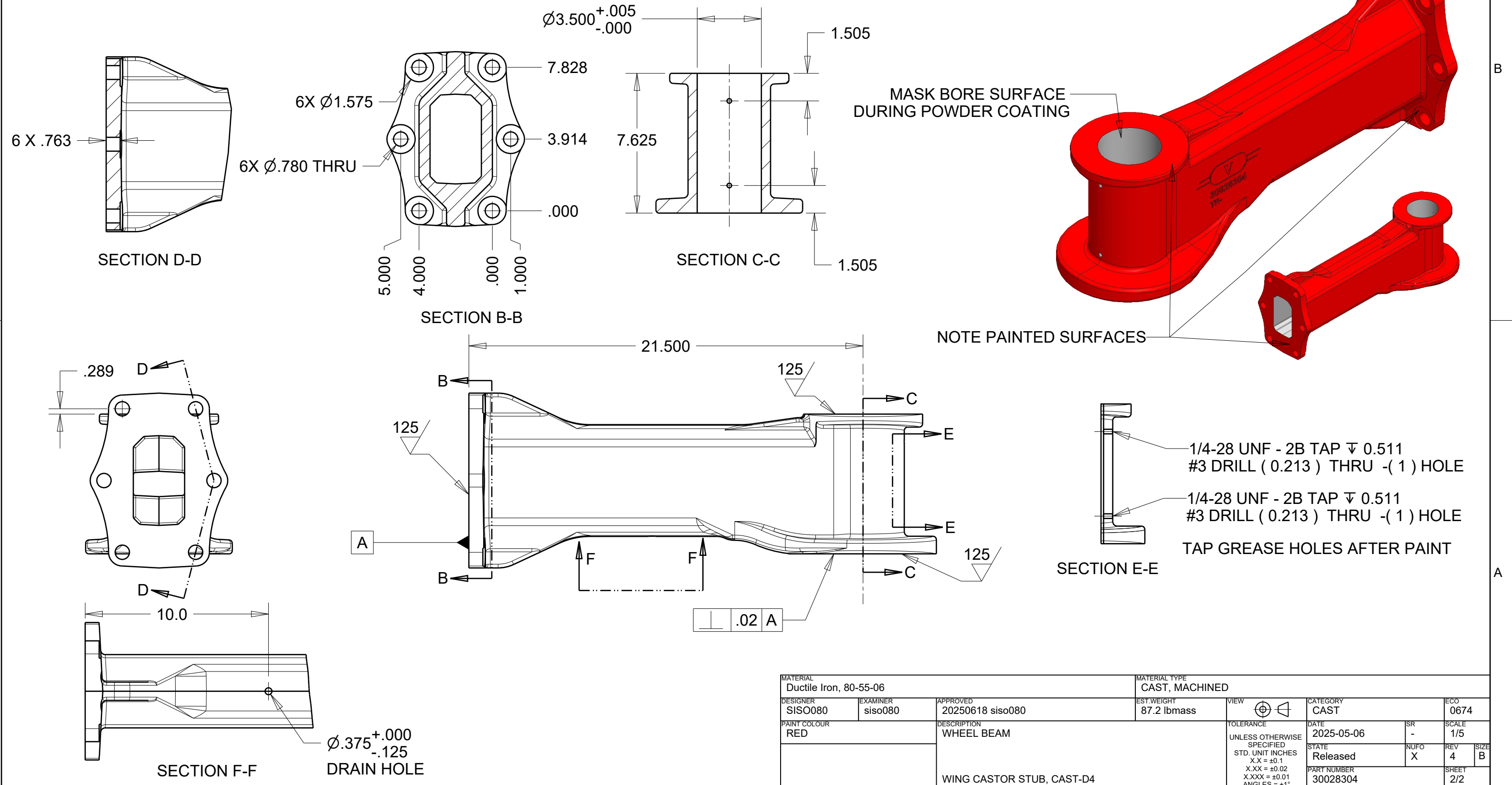
REV. 4	CHANGE NOTE	ECO 0674	ECO DES. siso080	DATE 20250722	APPR. siso080
UPDATED NEW LOGO					
ADDED P/N					
LOGO REMOVED FROM ONE SIDE					



MATERIAL Ductile Iron, 80-55-06		MATERIAL TYPE CAST, MACHINED		EST. WEIGHT 87.2 lbmass		VIEW ⊕		CATEGORY CAST		ECO 0674	
DESIGNER SISO080	EXAMINER siso080	APPROVED 20250618 siso080		TOLERANCE UNLESS OTHERWISE SPECIFIED STD. UNIT INCHES X.X = ±0.1 X.XX = ±0.02 X.XXX = ±0.01 ANGLES = ±1°		DATE 2025-05-06		SR -		SCALE 7/50	
PAINT COLOUR RED		DESCRIPTION WHEEL BEAM		STATE Released		NUFO X		REV 4		SIZE B	
		WING CASTOR STUB, CAST-D4		PART NUMBER 30028304		SHEET 1/2					

- AS MACHINED
- BREAK ALL SHARP EDGES.
- PAINT/POWDER COAT IAW VII STANDARD 01-007 - PAINT SPECIFICATIONS.
- ONLY MASK THE SURFACES INDICATED.
- APPLY CORROSIONX® OR EQUIVALENT RUST INHIBITOR TO UNPAINTED SURFACES FOLLOWING POWDER COAT/PAINT.
- MUST CHECK DRAIN HOLE NOT BLOCKED BY PAINT.
- DIMENSIONS ARE BEFORE PAINT.

REV. 4	CHANGE NOTE	ECO 0674	ECO DES. siso080	DATE 20250722	APPR. siso080
UPDATED NEW LOGO					
ADDED P/N					
LOGO REMOVED FROM ONE SIDE					



MATERIAL Ductile Iron, 80-55-06		MATERIAL TYPE CAST, MACHINED		ECO 0674	
DESIGNER SISO080	EXAMINER siso080	APPROVED 20250618 siso080	EST. WEIGHT 87.2 lbmass	VIEW 	CATEGORY CAST
PAINT COLOUR RED		DESCRIPTION WHEEL BEAM		TOLERANCE UNLESS OTHERWISE SPECIFIED STD. UNIT INCHES X.X = ±0.1 X.XX = ±0.02 X.XXX = ±0.01 ANGLES = ±1°	DATE 2025-05-06
		WING CASTOR STUB, CAST-D4		STATE Released	SR -
				PART NUMBER 30028304	SCALE 1/5
					REV 4
					SIZE B
					SHEET 2/2