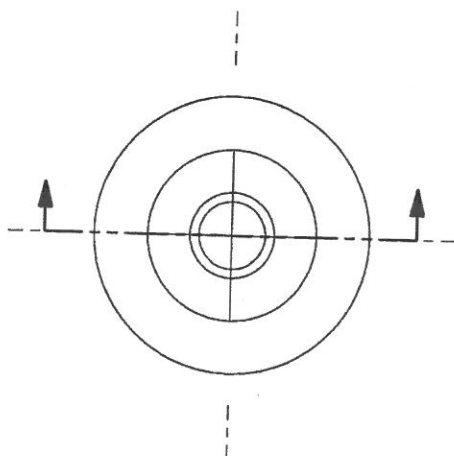


PRINTED ON: 9/12/2013 2:57:46 PM

[illegible]

NOTE:
REVISION 4 WAS ADDED TO SUIT "ABLE" SKIRT.

2.750

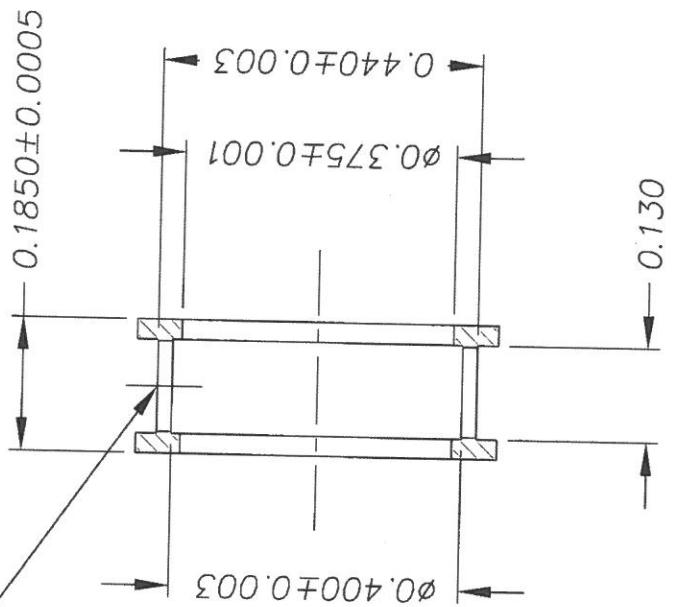
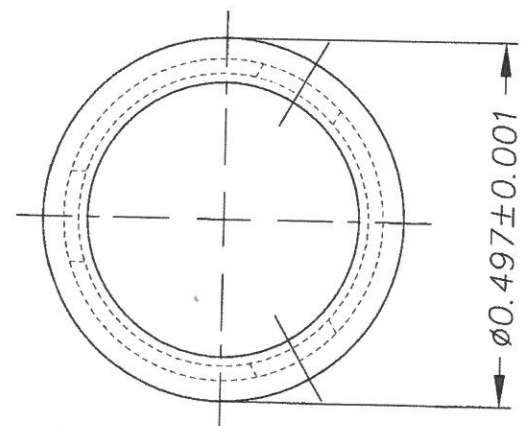
TOLERANCES FOR LOCATING HOLES $\pm .001$ $\pm .002$	TOLERANCES UNLESS OTHERWISE SPECIFIED FRACTIONAL $\pm 1/64$ DECIMAL $\pm .005$ ANGULAR $\pm 1/2$ BREAK ALL SHARP CORNERS	SCALE: 8:1	DRAWN BY: HZ	10032 DWG. NO.
		DATE: 3/24/2006	APPROVED BY:	
TITLE: SPEED NEEDLE SEAT DR				
10032 DWG. NO.				

LOCATION: M:\Drawings\PROJECTS\PROJECTS\A & B\PROJECTS\A & B\

23

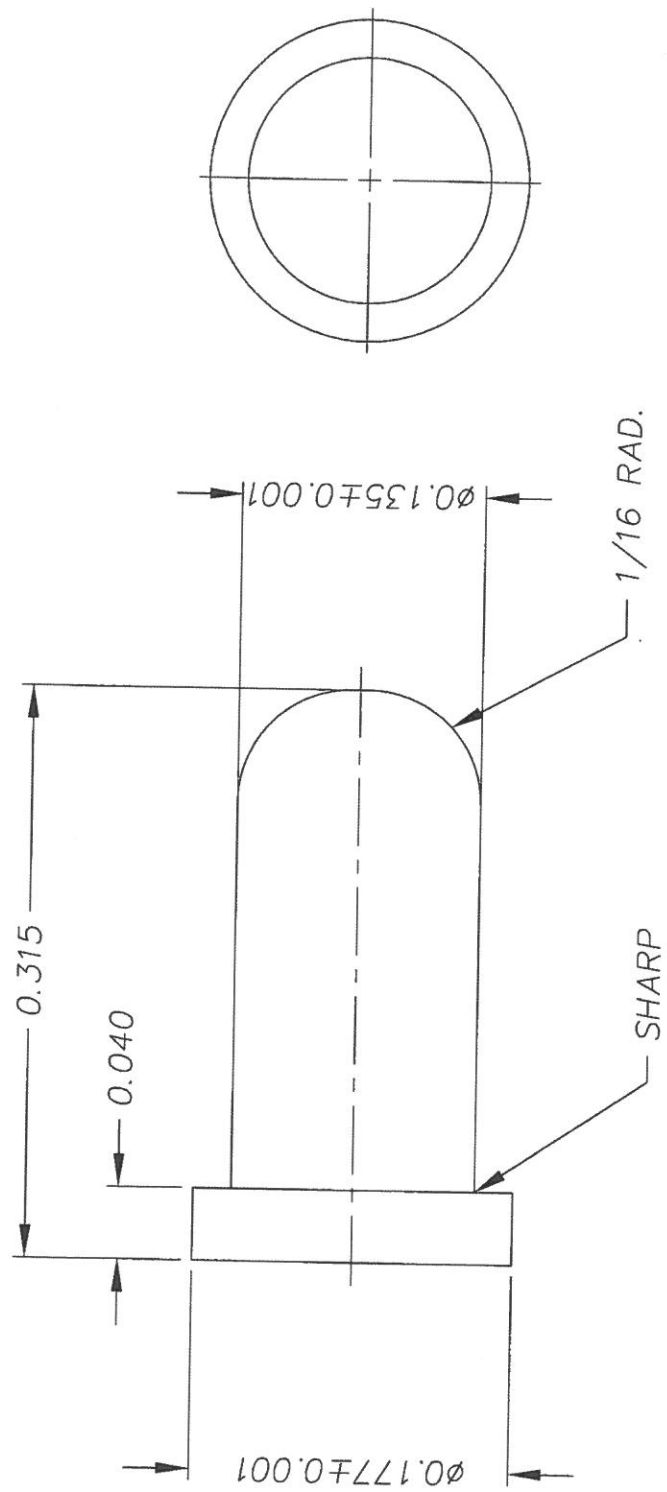
REV	DESCRIPTION	BY	DATE
(A)	GENERAL REVISIONS	R.G.	08/24/04

$\phi 1/8$ - 3 HOLES



TOLERANCES FOR LOCATING HOLES INDICATED BY DOWEL SYMBOL		TOLERANCES UNLESS OTHERWISE SPECIFIED		SCALE: 4 : 1		DRAWN BY: R. G.	
$\pm .001$		FRACTIONAL $\pm 1/64$		DATE: 08/24/04		APPROVED BY:	
ALL DOWEL HOLES SHALL BE LOCATED WITHIN $\pm .001$ OF EACH OTHER		XX DECIMAL $\pm .01$		TITLE: VALVE SPACER RING		DWG. NO. 10775	
		XXXDECIMAL $\pm .005$		MATERIAL: DELRIN			
		ANGULAR $\pm 1/2$					
		BREAK ALL SHARP CORNERS					

REV	DESCRIPTION	BY	DATE
(A)	GENERAL REVISIONS	R.G.	08/24/04



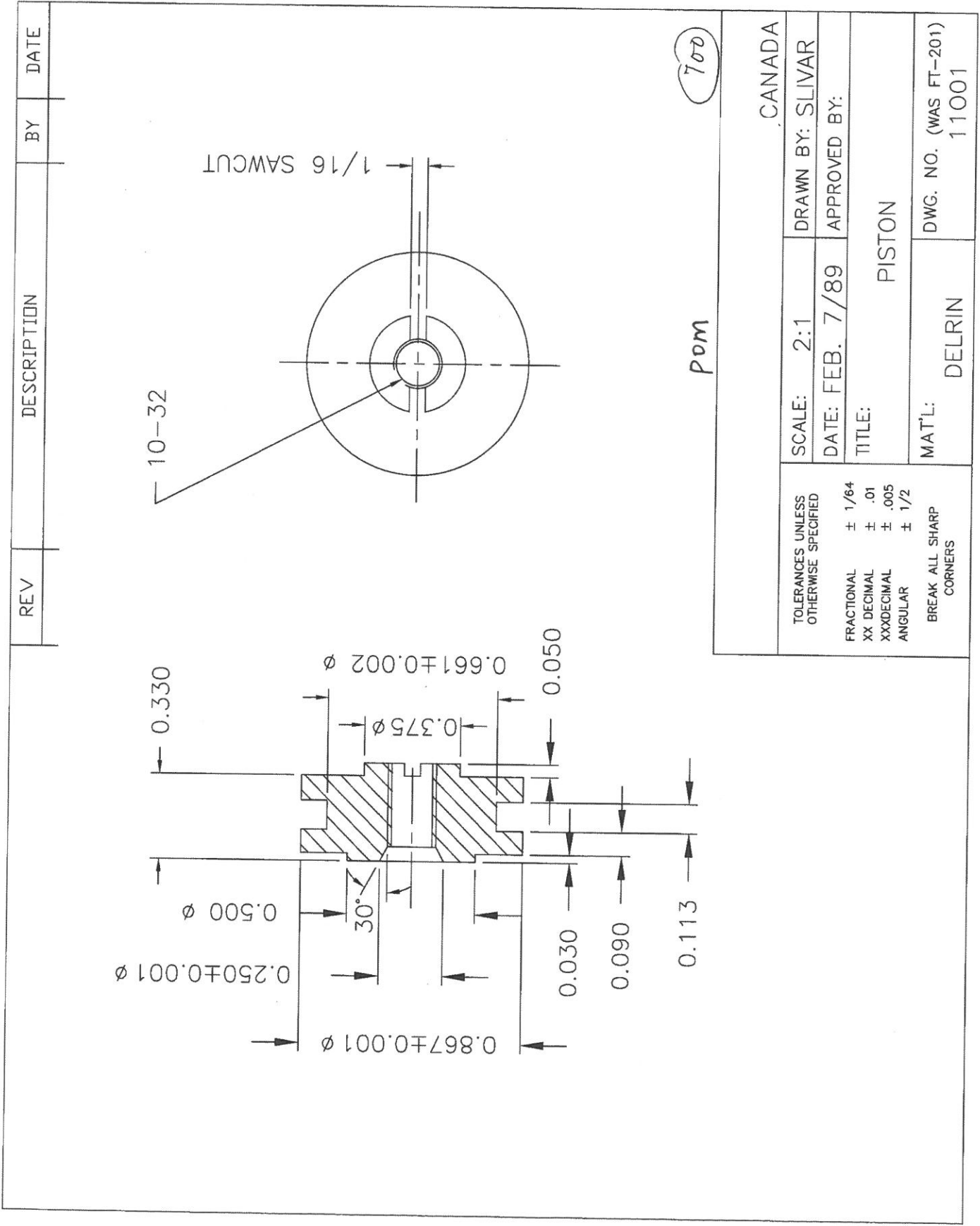
NOTE: THIS DWG. REPLACES DWG NO N121

pom

250

TOLERANCES FOR LOCATING HOLES INDICATED BY DOWEL SYMBOL		TOLERANCES UNLESS OTHERWISE SPECIFIED		CANADA	
⊕ ± .001		FRACTIONAL ± 1/64		SCALE: 10:1	DRAWN BY: R. G.
ALL DOWEL HOLES SHALL BE LOCATED WITHIN ±.001 OF EACH OTHER		XX DECIMAL ± .01		DATE: 08/24/04	APPROVED BY:
		XXX DECIMAL ± .005		TITLE: SPRING PLUNGER	
		ANGULAR ± 1/2		MAT'L: DELRIN	
		BREAK ALL SHARP CORNERS		DWG. NO. 10802	

WAS N215



TOLERANCES UNLESS OTHERWISE SPECIFIED

FRACTIONAL	± 1/64
XX DECIMAL	± .01
XXX DECIMAL	± .005
ANGULAR	± 1/2

BREAK ALL SHARP CORNERS

SCALE: 2:1
 DATE: FEB. 7/89
 TITLE: PISTON
 MAT'L: DELRIN
 DWG. NO. (WAS FT-201) 11001

CANADA

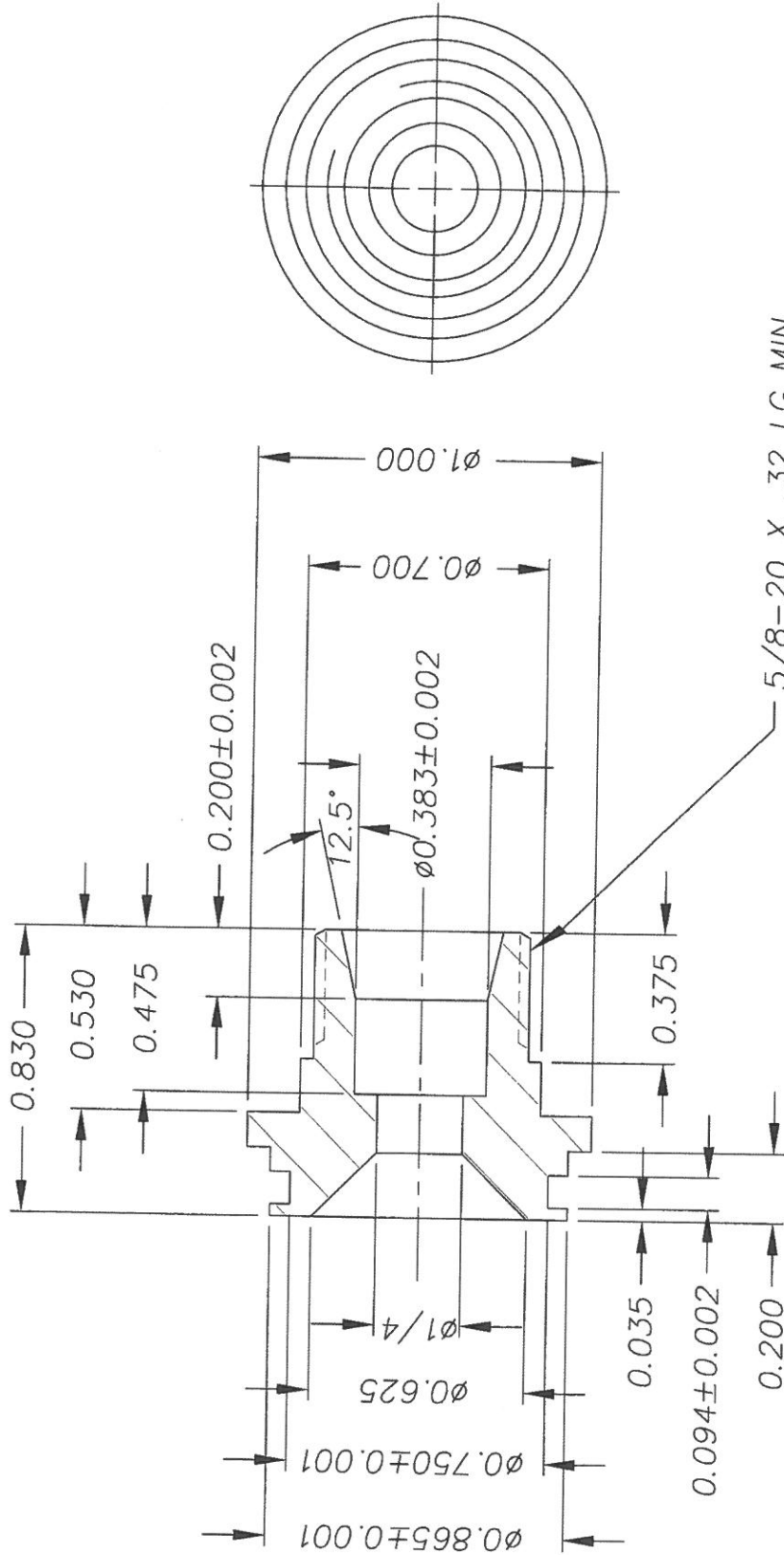
DRAWN BY: SLIVAR

APPROVED BY:

PISTON

DWG. NO. (WAS FT-201) 11001

REV	DESCRIPTION	BY	DATE
①	REDRAWN AUTOCAD	NY	7/18/94



POM

200

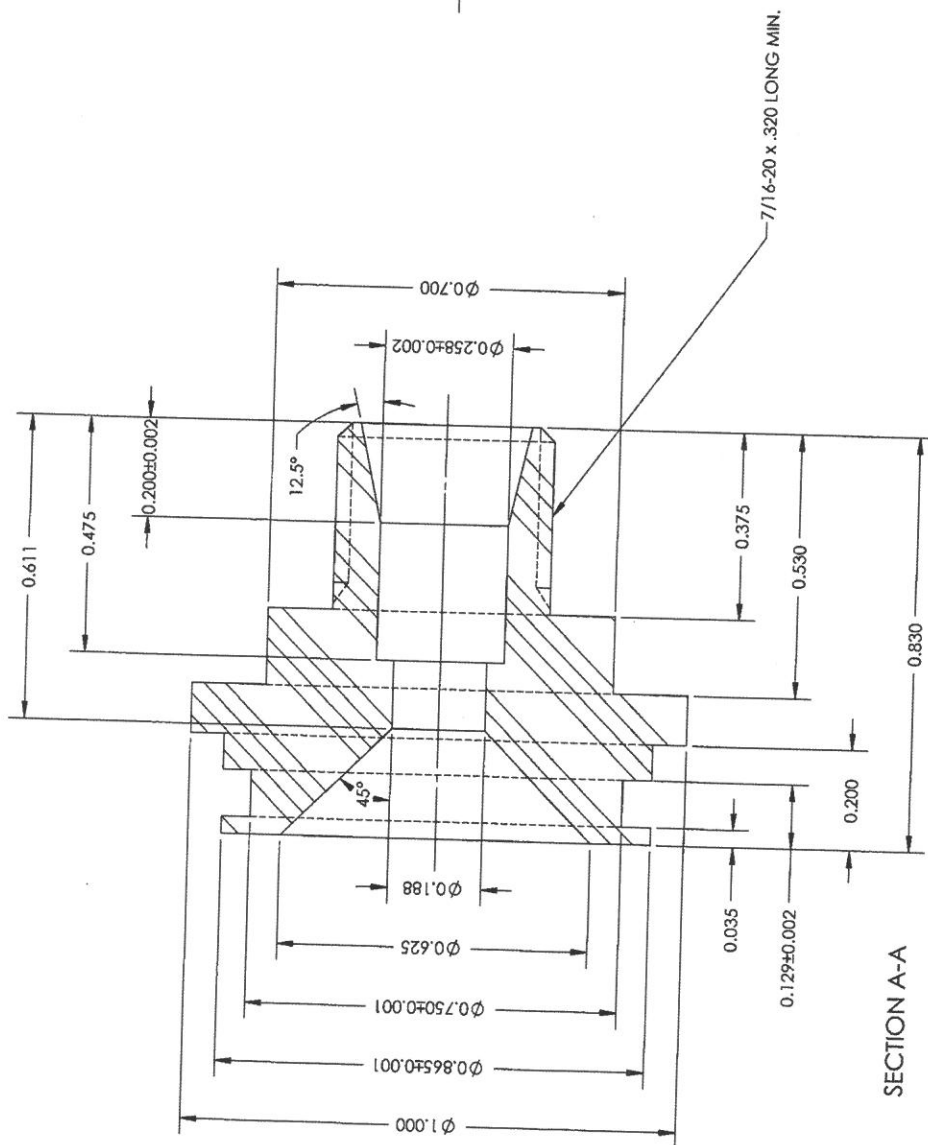
CANADA

TOLERANCES UNLESS OTHERWISE SPECIFIED	SCALE: 2 : 1	DRAWN BY: T.Mc
FRACTIONAL ± 1/64	DATE: SEPT 9/82	APPROVED BY:
XX DECIMAL ± .01	TITLE: FILTER ADAPTER 3/8	
XXXDECIMAL ± .005	MAT'L: DELRIN	DWG. NO. 10857
ANGULAR ± 1/2		
BREAK ALL SHARP CORNERS		

REF. WAS SP 003-06

34

MATERIAL: DELRIN
HARDNESS: NONE
FINISH: NONE



SECTION A-A

POM

250

COMMERCIAL CONFIDENTIAL DO NOT COPY		A	D.L.	08/10/10	CONVERSION FROM AUTOCAD TO SW
ALL DIMENSIONS ARE IN:		REV	BY	DATE	DESCRIPTION
IN		PART NAME: 1/4" FILTER ADAPTER			
BREAK ALL SHARP EDGES		REFERENCE NO.			
FRACTION ± 1/16 ANGLES ± 0.5°		APPROVED BY:			
.0 ± .003 .000 ± .005		CHK'D BY:			
.00 ± .010 .000 ± .010		DATE: 09/09/02			
		DESIGNER:			
		DRAWING NUMBER:			
		T.M.C.			
		10856			

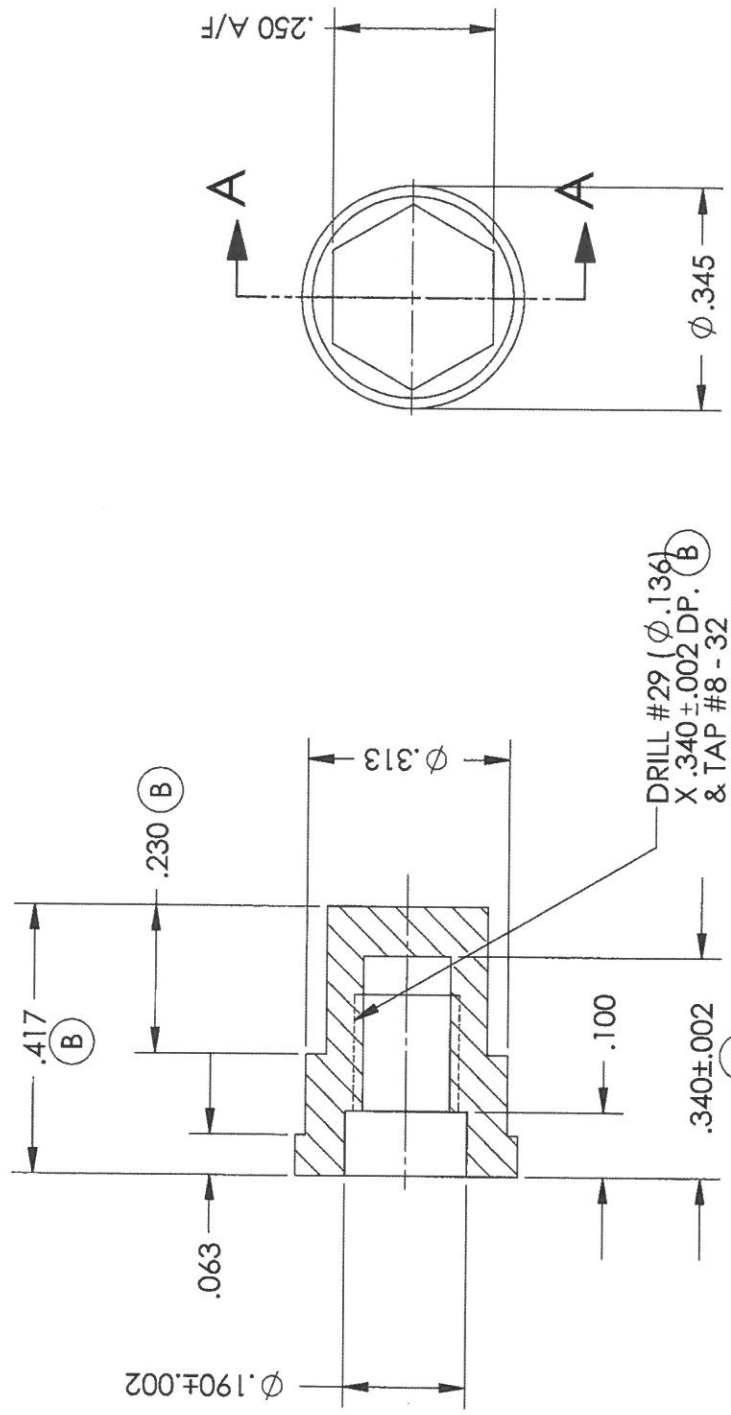
LOCATION: M:\Drawings\PROJECTS\1B & 2B PUMPS\1B2B DETAILS\

LAST UPDATED: 7/25/2012 9:03:57 AM

51

VERSION: 12/02/15 17:00:47 LOCATION: M:\Drawings\PROJECTS\PROJECTS\4H PUMP\4H DETAILS\39838.SLDRAW

REV.	DESCRIPTION	BY	DATE
(A)	DIM. 100 WAS .050	B.C.	08/29/03
(B)	DIMS CHANGED (REF. 1398388)	B.C.	02/10/04
(C)	CONVERTED FROM AutoCAD	H ZHAO	11/22/2006



1000 POM

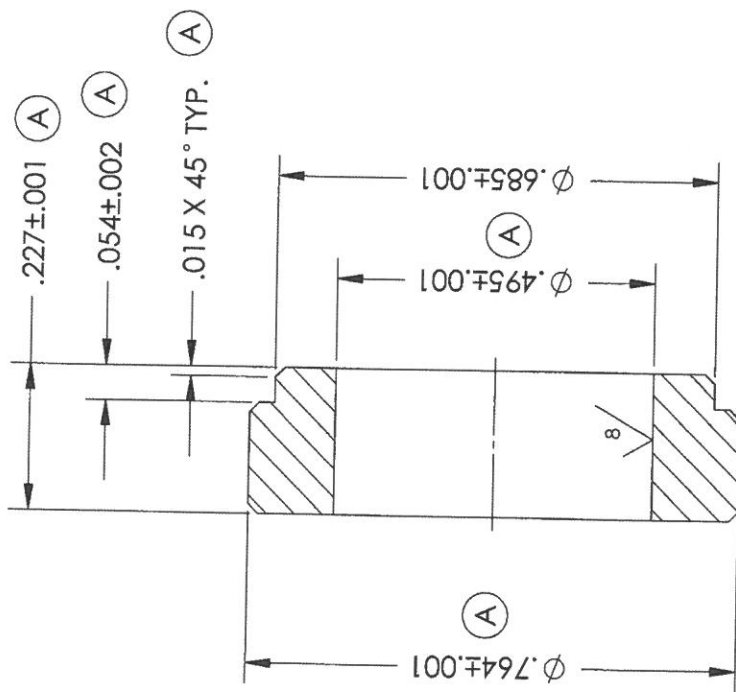
CANADA		SCALE: 4:1	DRAWN BY: H ZHAO
TOLERANCES UNLESS OTHERWISE SPECIFIED		DATE: 12/02/15	APPROVED BY:
FRACTIONAL ± 1/64		TITLE: LL 4 - WAY CONTROL ROD NUT	
XX DECIMAL ± .01		MAT'L: DELRIN	
XXX DECIMAL ± .005		DWG. NO. 139838	
ANGULAR ± 1/2			
BREAK ALL SHARP CORNERS			

TOLERANCES FOR LOCATING HOLES
± .001
± .002

49

VERSION: 12/2/2015 5:15:52 PM LOCATION: M:\DRAWINGS\PROJECTS\PROJECTS\4H PUMPS\4H DETAILS\136915.SLDRW

REV.	DESCRIPTION	BY	DATE
(A)	DIMS CHANGED (REF. 136915A)	B.C.	11/28/2006



SECTION A-A

POM

1150

CANADA

DRAWN BY: H ZHAO

APPROVED BY:

LL 4WAY VALVE
HOUSING BUSHING

DWG. NO. 136915

SCALE: 4:1

DATE: 8/25/2016

TOLERANCES UNLESS OTHERWISE SPECIFIED

FRACTIONAL ±1/64
XX DECIMAL ±.01
XXX DECIMAL ±.005
ANGULAR ±1/2

BREAK ALL SHARP CORNERS

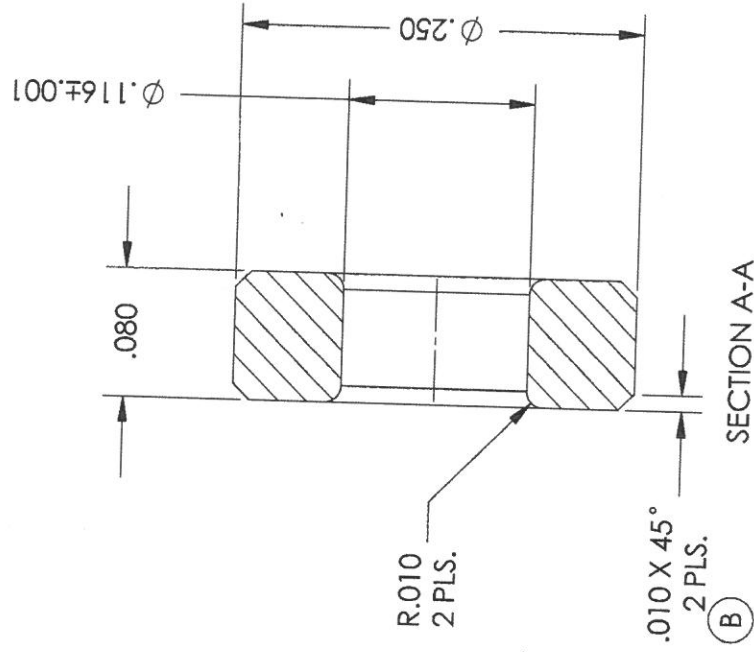
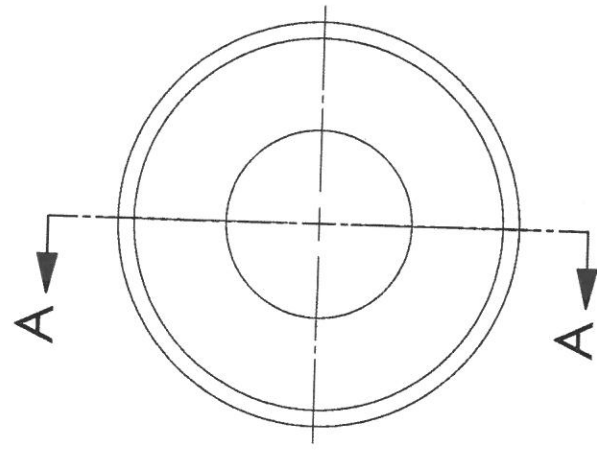
TOLERANCES FOR LOCATING HOLES

Φ ± .001
Φ ± .002

68

VERSION: 12/02/15 16:15:14 LOCATION: M:\Drawings\PROJECTS\PROJECTS\4H PUMPS\4H DETAILS\146229.SLDDRW

REV.	DESCRIPTION	BY	DATE
(A)	DIM 0.080 WAS 0.100	B.C.	09/29/03
(B)	ADDED CHAMFER	B.C.	10/09/03
(C)	CONVERTED FROM AOTUCAD	H ZHAO	10/27/2006



1660

TORONTO, CANADA			
SCALE: 10:1	DRAWN BY: H ZHAO		
DATE: 12/02/15	APPROVED BY:		
TITLE: WASHER			
MATERIAL: PEEK		DWG. NO. 146229	
TOLERANCES UNLESS OTHERWISE SPECIFIED		TOLERANCES FOR LOCATING HOLES	
FRACTIONAL ±1/64		± .001	
XX DECIMAL ±.01		± .002	
XXX DECIMAL ±.005			
ANGULAR ±1/2			
BREAK ALL SHARP CORNERS			

19

REV	DESCRIPTION	BY	DATE

3.175 ± 0.05
0.125 ± 0.002

0.814 ± 0.000
-0.001

0.02 X 30° CHAM.

NOTE:

1. POLISH FACES TO REMOVE MACHINING MARKS

两面要求透明.

有机玻璃.

1900

TORONTO, CANADA	
SCALE: 2:1	DRAWN BY: D.M
DATE: 19-10-82	APPROVED BY:
TITLE: WINDOW	
MAT'L: ACRYLIC	DWG. NO. 10588

TOLERANCES UNLESS OTHERWISE SPECIFIED	
FRACTIONAL	± 1/64
XX DECIMAL	± .01
XXX DECIMAL	± .005
ANGULAR	± 1/2

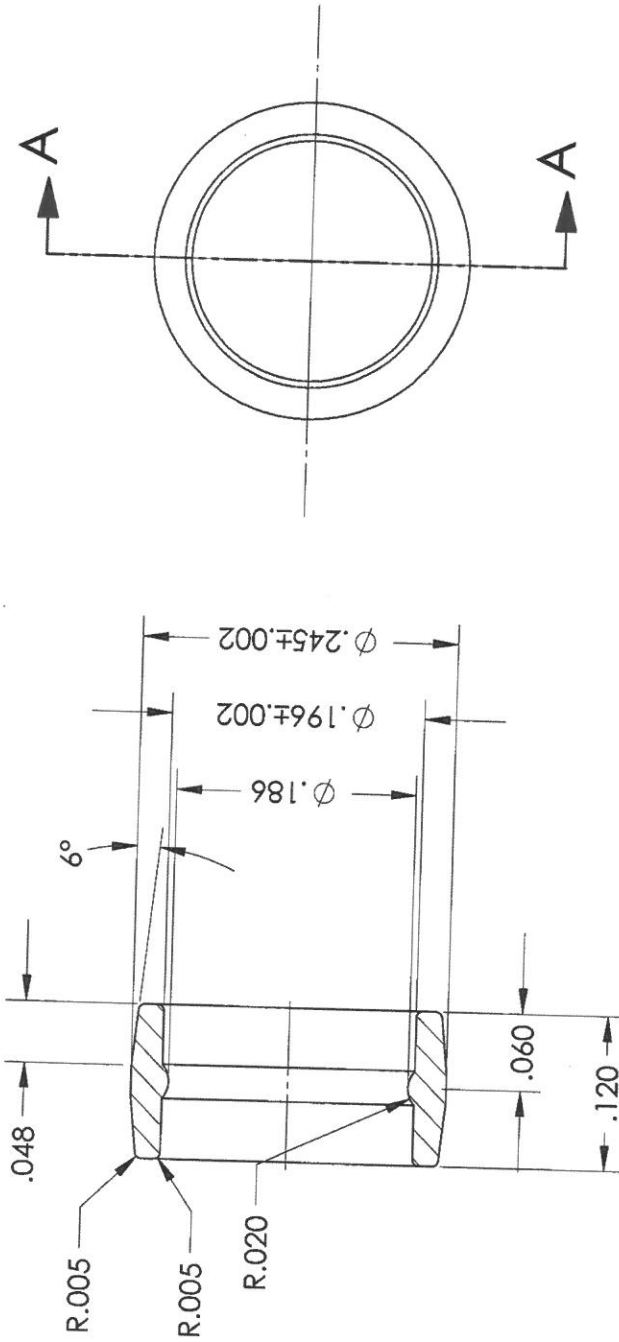
BREAK ALL SHARP CORNERS

91

MATERIAL: NYLON

HARDNESS:

FINISH:



SECTION A-A

Rev

350

COMMERCIAL CONFIDENTIAL DO NOT COPY		REV.	BY	DATE	DESCRIPTION
ALL DIMENSIONS ARE IN: IN		PART NAME: COUPLING SCREW COVER			
REFERENCE NO. 143441		APPROVED BY:			
B. CHAN		DESIGNER:			K. AHUJA
CHKD. BY:		DWG. SIZE:			DRAWING NUMBER
DATE: 03/14/12		SHEET: 1 OF 1			242342
3RD ANGLE PROJECTION					
BREAK ALL SHARP EDGES					
FRACTION ± 1/16		ANGLES ± 0.5°			
.0 ± .030		.000 ± .005			
.00 ± .010		.0000 ± .0010			

LAST UPDATED: 14/03/2012 4:22:23 PM

LOCATED IN: M:\Drawings\PROJECTS\H\H0019 - FILL TUBE DEVELOPMENT\FT1\LAYOUTS & CONCEPTS\NEW FT1 DRIVE - SIMPLE DESIGN