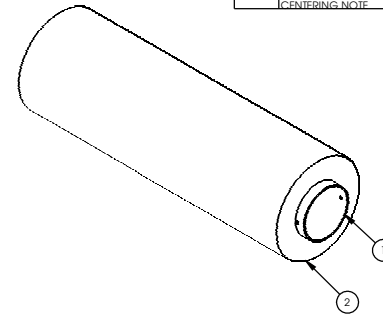
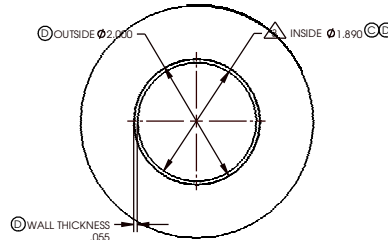
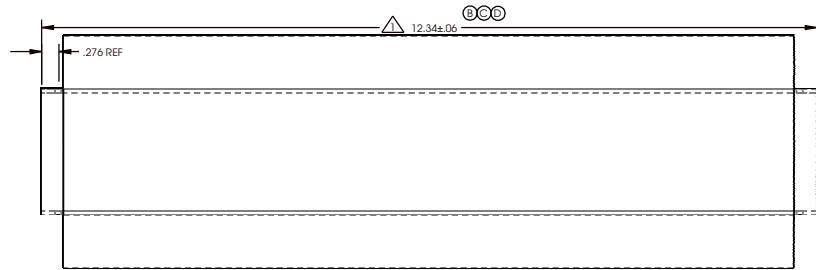


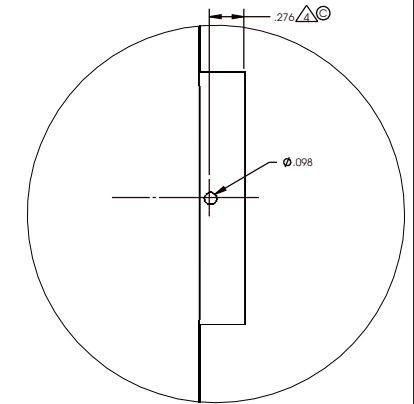
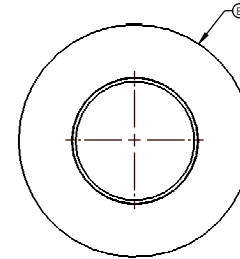
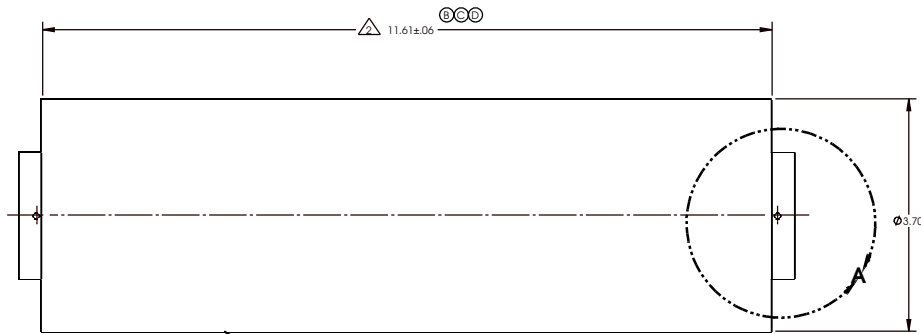
REVISIONS						
REV.	DESCRIPTION	DATE	FAM/FAR	ECR	BY	APPD
A	NEW DRAWING RELEASED	05/27/09		09354	CCE	DH
B	12.400 +/- .039 WAS 11.693 +/- .039; 11.614 +/- .039 WAS 10.906 +/- .039; FOAM OUTER SURFACE CHANGED FROM RIBBED STYLE TO SMOOTH	9/4/2009		09742	DH	FD
C	12.34 +/- .039 WAS 12.400 +/- .039; ADD CTO 1.4	10/1/2010		10844	DLH	FD
D	TOL. ± .06 WAS ± .04; .04. Ø 2.000 WAS 2.012; Ø 1.890 WAS 1.870; .055 WAS .071; REMOVED WAVE FROM DISC; REMOVED BOM TABLE; ADDED MATERIAL TO TITLE BLOCK	12/6/2010		101038	MS	DLH
E	UPDATED NOTES AND ADDED MAIL SPEC UPDATED TITLE BLOCK. 11.61 USED TO BE 11.614. ADDED CENTERING NOTE	12/5/2012		121319	JK	CD

RIGID PVC TUBE



SCALE 1:2

ROLLER AND TUBE ASSEMBLY



DETAIL A
SCALE 2:1

- NOTES: (C) MATERIAL SPECS. TUBE: RIGID PVC PVA FOAM:
- (a) 30% Compressive Stress: 90-120
 - (b) Apparent Density: 0.12
 - (c) Tensile Strength: 4.7-5.6
 - (d) Elongation at Break: 318
 - (e) Tearing Strength: 1.9-2
 - (f) Porosity: 99-12
 - (g) Avg pore size: 80-130
 - (h) Water Absorption: 700-1050
 - (i) Absorption Speed: 3.9
 - (j) Compression set: 26.3
2. ALL TOOLINGS TO BE PRODUCED USING 3D CAD FILE SUPPLIED BY HAYWARD
 3. ALL TOOL DRAWINGS TO BE APPROVED BY HAYWARD FOR PARTING LINE, GATE, AND EJECTOR PIN LOCATIONS PRIOR TO MANUFACTURE OF TOOL.
 4. ALL DRAFT TO BE 1°
 5. ALL CORNERS SHOWN SHARP TO BE .01
 6. ALL UNSPECIFIED EXTERNAL RADII TO BE R.03, INTERNAL RADII TO BE R.01.
 7. ALL FEATURES TO BE SYMMETRICAL ABOUT INDICATED C IN A ZONE OF Ø .005
 8. ALL SURFACES TO BE FINISHED: SPI-SPE # 3
 9. PARTING LINE MISMATCH TO BE .003-INCH MAX. NO FLASH
 10. GATE TRIM TO BE FLUSH WITHIN ± .010
 11. ALL PARTS TO BE REVIEWED AND APPROVED BY HAYWARD PRIOR TO START OF PRODUCTION.
 12. FINISHED PARTS TO BE FREE OF FLASH, BURRS, VOIDS, SINKS OR OTHER SURFACE IMPERFECTIONS.
 13. SURFACES TO BE FINISHED AS SPECIFIED. EXAMPLE: ALL SURFACES SPI-SPE # 3
 14. PARTS TO BE SHIPPED SEALED IN CLEAR PLASTIC TO PREVENT MOISTURE LOSS.

THRU ≡ CRITICAL FIRST PIECE INSPECTION POINT, INSPECT AT A MINIMUM EVERY SHIFT.

HAYWARD FOAM ROLLER WITH PVC TUBE	
MATERIAL: COOL GRAY 10-11C WEIGHT: 2.2 COLOR: COOL GRAY 10-11C	PART NO: RC26011 SCALE: 1:1 SHEET 1 OF 1 STATUS: Released