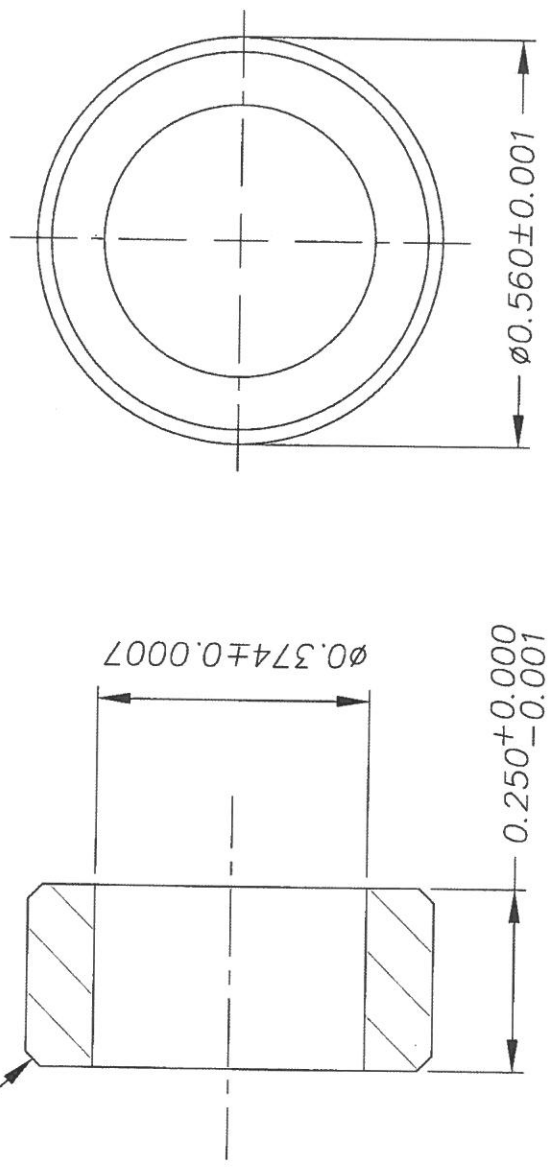


REV	DESCRIPTION	BY	DATE
(A)	GENERAL REVISIONS	R.G.	08/24/04

0.02 X CHAM. TYP



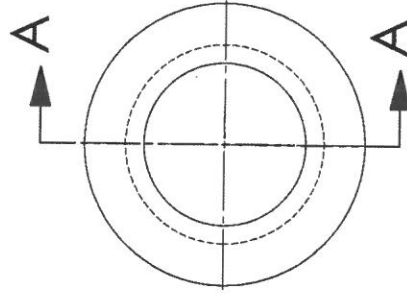
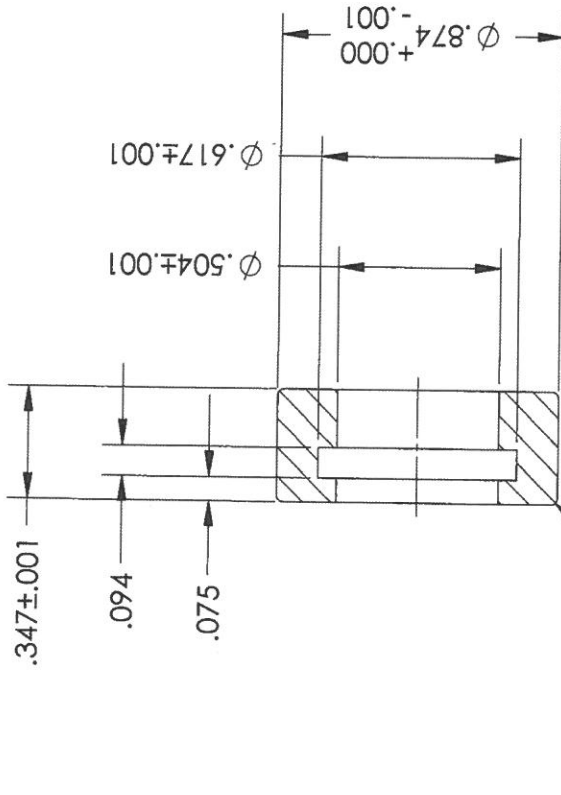
QAL9-4

650

), CANADA

TOLERANCES FOR LOCATING HOLES INDICATED BY DOWEL SYMBOL $\pm .001$ ALL DOWEL HOLES SHALL BE LOCATED WITHIN $\pm .001$ OF EACH OTHER	TOLERANCES UNLESS OTHERWISE SPECIFIED FRACTIONAL $\pm 1/64$ XX DECIMAL $\pm .01$ XXXDECIMAL $\pm .005$ ANGULAR $\pm 1/2$ BREAK ALL SHARP CORNERS	SCALE: 4 : 1	DRAWN BY: R. G.
		DATE: 08/24/04	APPROVED BY:
		TITLE: LOCATING SPACER	
	MAT'L: BRONZE	DWG. NO. 10771	

REV.	DESCRIPTION	BY	DATE
(A)	ADDED R.020	B.C.	08/29/03
(B)	CONVERTED FROM AutoCAD	H ZHAO	11/22/2006



0AL9-4

700

SECTION A-A

CANADA

SCALE: 2:1

DRAWN BY: H ZHAO

DATE: 12/02/15

APPROVED BY:

TITLE: HOUSING BUSHING

MAT'L: BRONZE

DWG. NO. 10830

TOLERANCES UNLESS OTHERWISE SPECIFIED

FRACTIONAL	$\pm 1/64$
XX DECIMAL	$\pm .01$
XXX DECIMAL	$\pm .005$
ANGULAR	$\pm 1/2$

BREAK ALL SHARP CORNERS

TOLERANCES FOR LOCATING HOLES

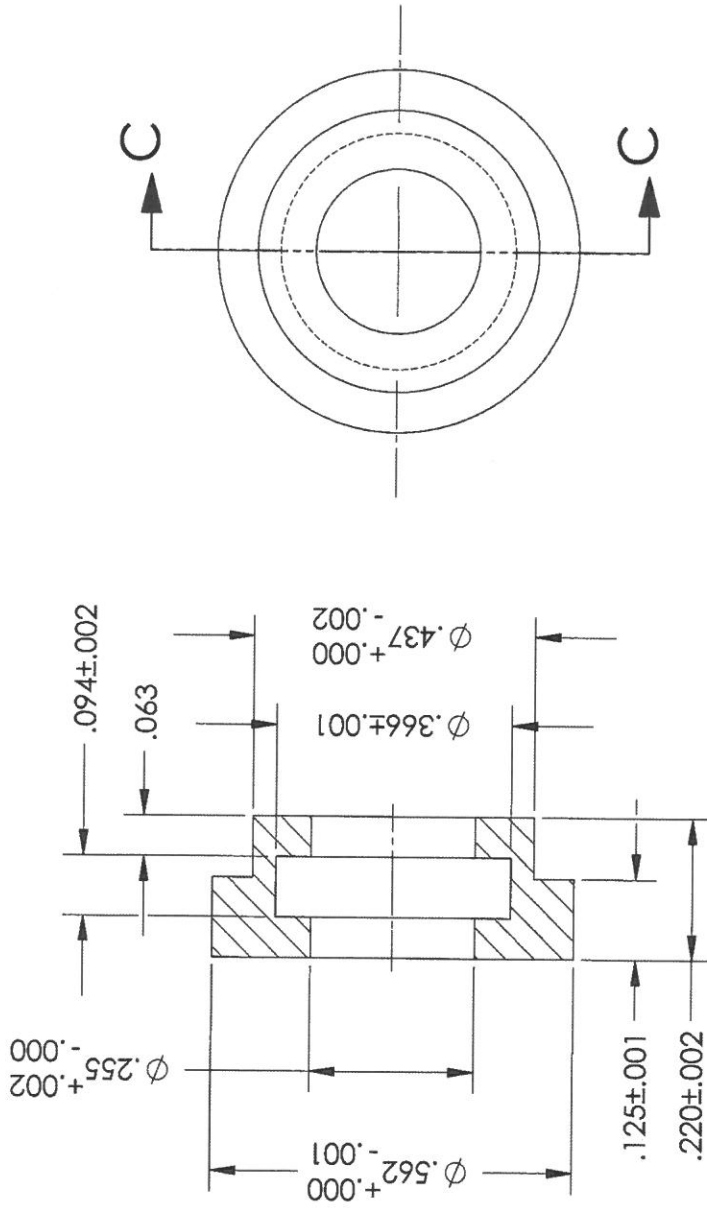
$\phi \pm .001$
$\phi \pm .002$

43

PRINTED ON: 10/14/2015 10:30:00 AM

LOCATED IN: M:\Drawings\PROJECTS\H\H0019 - FILL TUBE DEVELOPMENT\FVT1\F1 DETAILS

REV.	DESCRIPTION	BY	DATE
A	CONVERTED FROM AUTOCAD	B.C.	4/25/2006



SECTION C-C

0AL9-4

1200

CANADA

SCALE: 4:1

DRAWN BY: PAV

DATE: 06/23/97

APPROVED BY:

TITLE: HOUSING BUSHING

MAT'L: BRONZE

DWG. NO.

76770

TOLERANCES UNLESS OTHERWISE SPECIFIED  
FRACTIONAL ±1/64  
XX DECIMAL ±.01  
XXX DECIMAL ±.005  
ANGULAR ±1/2

BREAK ALL SHARP CORNERS

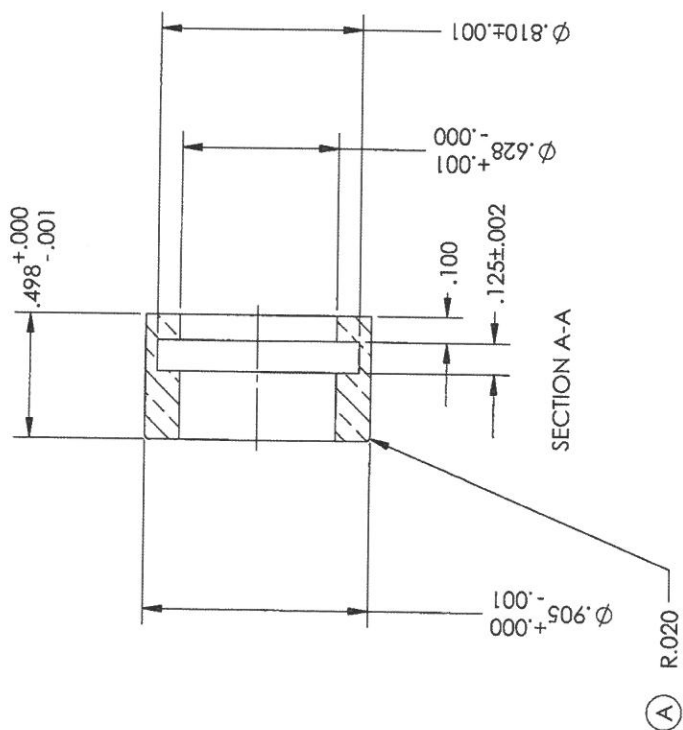
TOLERANCES FOR LOCATING HOLES  
± .001  
± .002

260

45

VERSION: 12/02/15 154/02 LOCATION: M:\Crown\p\PROJ\EC15\PARTS\44 DETALS\122733.SLDRAW

REV.	DESCRIPTION	BY	DATE
(A)	WAS 0.020 CHAMFER	B.C.	09/08/03
(B)	CONVERTED FROM AutoCAD	H ZHAO	10/19/2006



NOTE: CAN BE MADE FROM HB#T0T07

QAL9-4

700

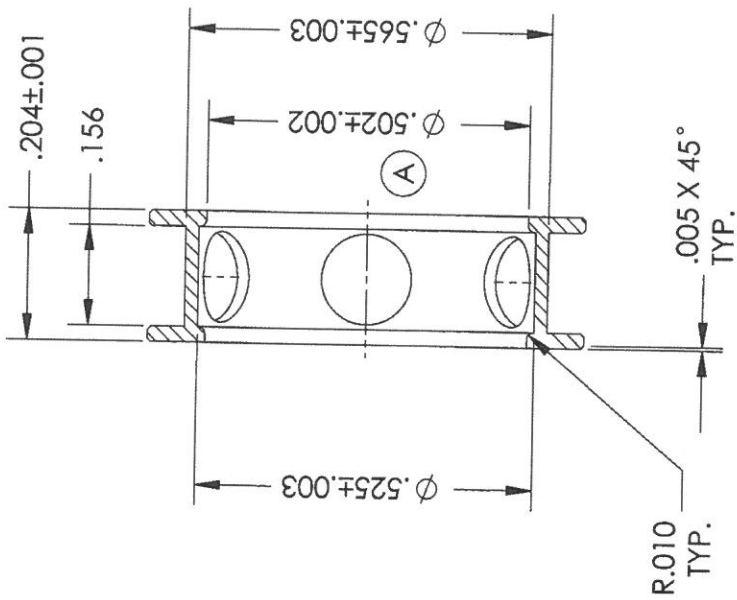
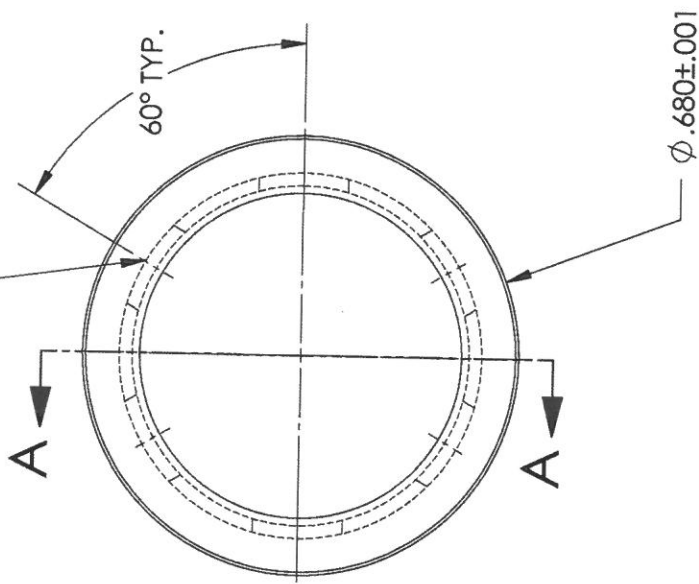
TOLERANCES UNLESS OTHERWISE SPECIFIED		SCALE: 2:1	CANADA
FRACTIONAL	$\pm 1/64$	DRAWN BY: H ZHAO	
XX DECIMAL	$\pm .01$	DATE: 12/02/15	
XXX DECIMAL	$\pm .005$	TITLE: DRIVE HOUSING BUSHING	
ANGULAR	$\pm 1/2$	MATL: BRONZE	
BREAK ALL SHARP CORNERS		DWG. NO. 122733	

48

VERSION: 12/02/15 16:29:02 LOCATION: M:\Drawings\PROJECTS\4H PUMPS\4H DETAILS\36914.SLDRAW

REV.	DESCRIPTION	BY	DATE
(A)	DIM $\phi .502$ WAS $\phi .500$	B.C.	09/02/03
(B)	$\phi .9/64$ WAS $\phi .156$	B.C.	10/10/03
(C)	CONVERTED FROM AutoCAD	H ZHAO	11/24/2006

DRILL  $\phi .9/64$  TO BORE  
6 PLS.



SECTION A-A

H62

3000

CANADA

SCALE:	4:1	DRAWN BY:	H ZHAO
DATE:	12/02/15	APPROVED BY:	

TITLE: 4 WAY VALVE SPACER RING

MAT'L:	BRASS #220	DWG. NO.	136914
--------	------------	----------	--------

PROVIDE GRADE

TOLERANCES UNLESS OTHERWISE SPECIFIED	FRACTIONAL $\pm 1/64$
	XX DECIMAL $\pm .01$
	XXX DECIMAL $\pm .005$
	ANGULAR $\pm 1/2$
	BREAK ALL SHARP CORNERS

TOLERANCES FOR LOCATING HOLES	$\phi \pm .001$
	$\phi \pm .002$

