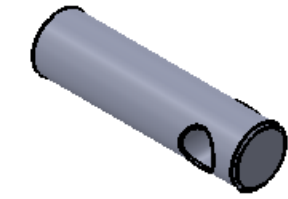
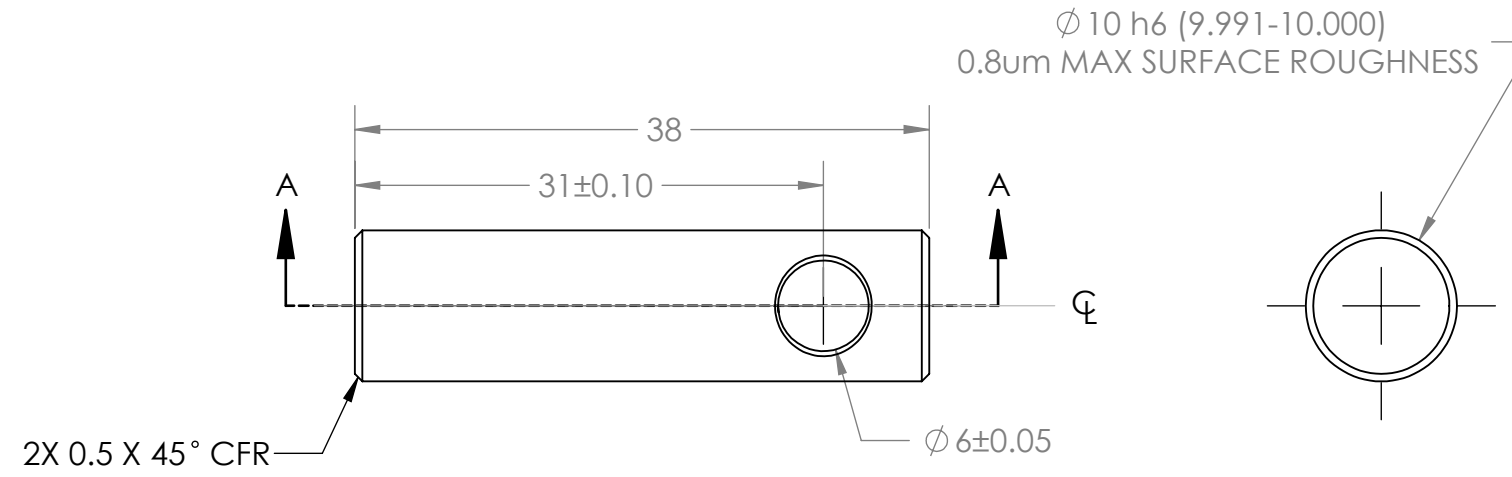
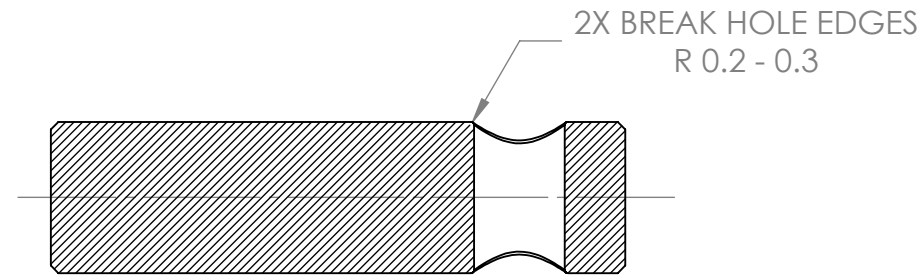


REV.	DESCRIPTION	DATE	APPROVED
X1	Released for Supplier Review and Feedback	10.15.14	DS



FULL SCALE



SECTION A-A

NOTES:

1. APPLICABLE STANDARDS / SPECIFICATIONS: ASME Y14.5M-1994, DIMENSIONING AND TOLERANCES.
2. CURRENT REVISION OF 3D CAD GEOMETRY SUPPLIED BY FIREFLY MEDICAL DEFINES FEATURES NOT DIMENSIONED.
3. EXCEPT WHERE SPECIFIED IN THIS DRAWING, LINEAR TOLERANCES FOR ALL FEATURES, INCLUDING THOSE DEFINED BY 3D CAD GEOMETRY, SHALL BE AS SHOWN IN THE TITLE BLOCK.
4. FIRST ARTICLE INSPECTION SHALL BE PERFORMED BY REFERENCE TO THE 3D CAD MODEL AND OVERRIDING DIMENSIONS AND TOLERANCES SHOWN.
5. **STAINLESS STEEL TO HAVE 292MPa MINIMUM TENSILE YIELD. VENDOR: PLEASE RECOMMEND SPECIFIC MATERIAL.**

FIREFLY MEDICAL LINEAR TOLERANCES: 0.5mm to 3mm +/- 0.1mm Above 3mm to 6mm +/- 0.1mm Above 6mm to 30mm +/- 0.2mm Above 30mm to 120mm +/- 0.3mm Above 120mm to 400mm +/- 0.5mm	TITLE	PIN, BRACE BRACKET LOCK		DRAWN BY/DATE	CLA/8.17.14
	MAT'L:	STAINLESS STEEL; SEE NOTES		APPROVED BY/DATE	DS/10.15.14
FINISH:	NONE	SCALE	PAGE #	XX.X ANG	ITEM NUMBER/REV
		2:1	1/1	±.25°	16062X1