

Specifications

Electrical Ratings	
2 position switch	20A @ 120VAC 16A @ 250VAC General Purpose 1hp @ 250VAC; 3/4 hp @ 125VAC
3 position switch	15A @ 125VAC 10A @ 250VAC General Purpose

Switch Function	SPST Illuminated, DPST, DPDT
Electrical Life	10,000 cycles typical
Contact Resistance	≤ 50mΩ initial
Dielectric Strength	1500Vrms min
Insulation Resistance	≥ 100MΩ min
Operating Temperature	-30°C to +80°C
Storage Temperature	-30°C to +80°C

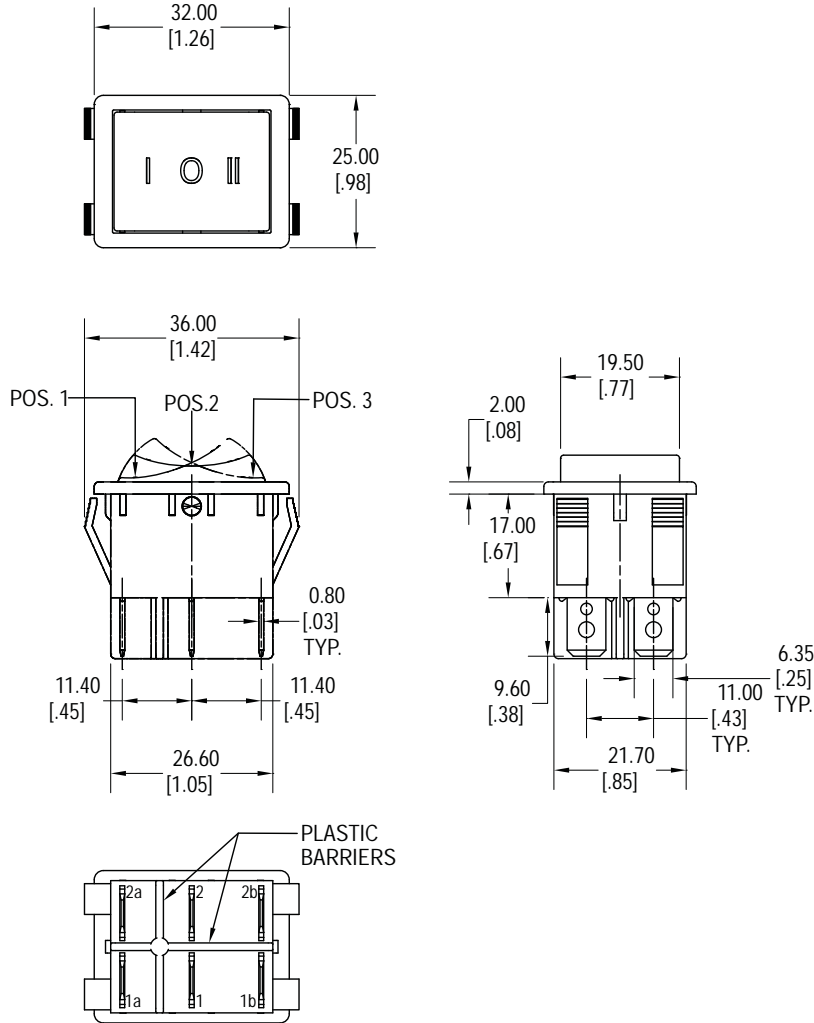
Materials

Housing	6/6 Nylon
Actuator	6/6 Nylon, PC Illuminated
Contacts	Silver Alloy
Terminals	Brass, Silver Plated
Lamp	Neon or Tungsten

Ordering Information

1. Series	RW	1	1	2	5T	D	W	C	T12
RW									
2. Number of Poles									
1 = Single Pole **Illuminated only									
2 = Double Pole **Not available illuminated									
3. Switch Function () = momentary									
1 = OFF - NONE - ON **Illumination only available with this function									
2 = OFF - NONE - (ON)									
3 = (OFF) - NONE - ON									
4 = ON - NONE - ON									
5 = ON - NONE - (ON)									
6 = ON - OFF - ON									
7 = (ON) - OFF - (ON)									
8 = ON - OFF - (ON)									
4. Housing Color									
1 = White									
2 = Black									
9 = Gray									
5. Actuator Colors									
1 = White	4 = Yellow	7 = Blue	1T = White Transparent	5T = Green Transparent					
2 = Black	5 = Green	8 = Purple	3T = Red Transparent	7T = Blue Transparent					
3 = Red	6 = Orange	9 = Gray	4T = Yellow Transparent						
6. Actuator Marking									
A D G J									
B E H K									
C F I									
7. Actuator Marking Color									
A = No Marking	W = White								
B = Black	R = Red								
8. Terminal Options									
C = .250" Quick Connects / Solder Lug									
9. Lamp Options									
N1 = 125VAC Neon Lamp	T12 = 12VDC Tungsten Lamp								
N2 = 250VAC Neon Lamp	T24 = 24VDC Tungsten Lamp								

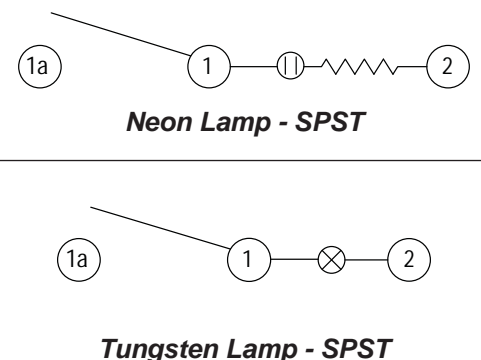
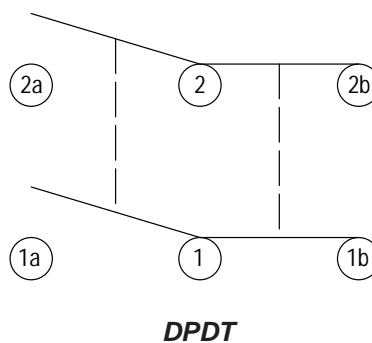
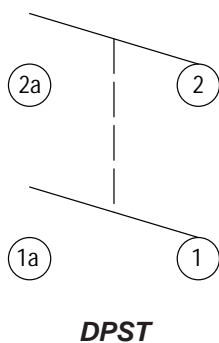
Dimensions



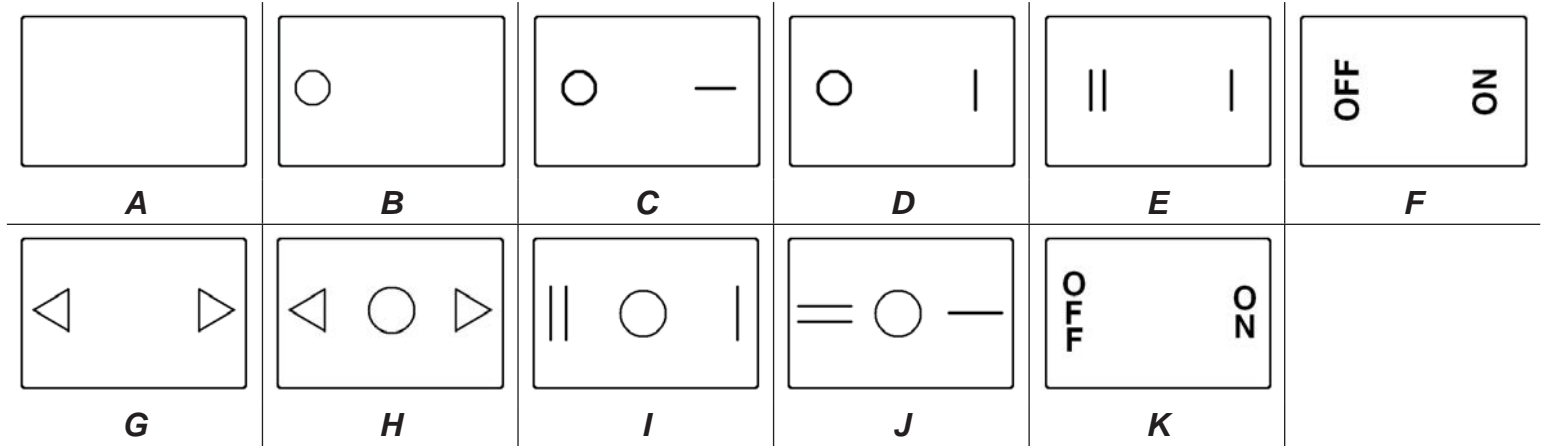
Switch Function			
Function	Position 1	Position 2	Position 3
1*	OFF	NONE	ON
2	OFF	NONE	(ON)
3	(OFF)	NONE	ON
Terminals	--	--	1 ~ 1a 2 ~ 2a
4	ON	NONE	ON
5	ON	NONE	(ON)
6	ON	OFF	ON
7	(ON)	OFF	(ON)
8	ON	OFF	(ON)
Terminals	1 ~ 1b 2 ~ 2b	--	1 ~ 1a 2 ~ 2a

* Illuminated function only
() = Momentary function

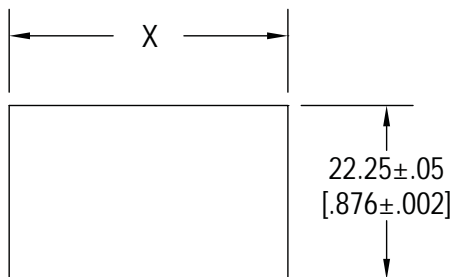
Schematics



Actuator Marking Options



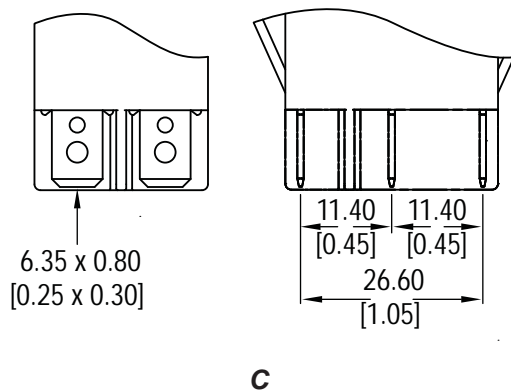
Panel Cut Out



Panel Thickness	X
0.75 ~ 1.25	30.0 ~ 30.2
1.25 ~ 2.00	30.2 ~ 30.4
2.00 ~ 3.00	30.6 ~ 30.8

Panel cut out material thickness : 0.7mm ~ 3.0mm

Terminal Options



Sealing Boot

