

Subject:

Quotation for Material / Equipment

We intend to purchase goods detailed as on attached annexure. Kindly send us your best offer in accurate with following General Conditions as stated below :-

General Conditions:

- a) Submission of Quotation: Quotation may be sent immediately through Fax or Courier but Original Proforma Invoice along with detailed technical brochures / literature must reach us by mail before the last date mentioned below.
- b) Currency: Quotation should be in **RMB**.
- c) Last Date of Quotation: 19-10-2020
- d) Validity: At least 90 days.
- e) Prices Basis: Firm and Fix C&F Prices
- f) Payment Mode:
- We accept payment through L/C with condition that all domestic bank charges will be borne by us while all bank in beneficiary's country including all L/C conformation (if desired by the supplier) charges will be borne by the beneficiary, OR payment may be made against shipping documents OR after delivery of goods (in case of small value).
 - We accept Pre-payment only against unconditional & irrevocable Bank Guarantee through First Class Bank.

Note:

While arranging offer following must be complied with:-

- Price breakup** must be given for each and every quoted items separately. **Package price** (if quoted) is not acceptable and will lead to disqualification of your bid.
- Quotation must be accompanied with detailed technical literature/brochure, manufacturing drawings, operational manuals, repair / maintenance manual, circuit diagrams in English language.

Centrifugal Fans

Centrifugal Fans will meet following technical specifications in addition to the requirements mentioned in Annexure "B":-

Item No	Description	QTY (Nos)
	Gastight SS Centrifugal Fans Complete with Motor, Accessories and Spares with Following Specifications:	
1.	<u>FAN # 01:-</u>	01
	<ul style="list-style-type: none"> Flow Rate: 30,000 CMH Static Pressure: 225 mm of WG 	
2.	<ul style="list-style-type: none"> Configuration: LG0 Max Dimensions: 2250 mm(L) x 1750 mm(W) x 1800 mm (H) 	
3.	<ul style="list-style-type: none"> Inlet Size (Preferably): ϕ650 mm Outlet Size (Preferably): 655 mm x 460 mm 	01
	<u>FAN # 02:-</u>	
	<ul style="list-style-type: none"> Flow Rate: 4,400 CMH Static Pressure: 350 mm of WG Configuration: RD0 Max Dimensions: 1000 mm(L) x 855 mm(W) x 950 mm (H) Inlet Size (Preferably): ϕ240 mm Outlet Size (Preferably): 210 mm x 210 mm 	
	<u>FAN # 03:-</u>	01
	<ul style="list-style-type: none"> Flow Rate: 250 CMH Static Pressure: 450 mm of WG Configuration: RD0 Max Dimensions: 935 mm(L) x 450 mm(W) x 700 mm (H) Inlet Size (Preferably): ϕ100 mm Outlet Size (Preferably): 65 mm x 55 mm 	
	<u>Rest of the specifications/requirements for above mentioned fans are as follows:-</u>	
	<u>Fan:-</u>	
	<ul style="list-style-type: none"> Type: Centrifugal Power Transmission: Belt Driven Inlet: Single Construction Material: Ventilated Air Contact Parts, SS; Other Parts: Carbon Steel Epoxy Painted Fan Class: II as per ACMA Maximum Temperature: 100° C Ambient Temperature: -20° C to 50° C Altitude: 450 meters Medium: Dust Filtered Air at Ambient Condition 	
	<u>Motor:-</u>	
	<ul style="list-style-type: none"> Power Supply: 380-415V, 3Phase, 50Hz 	

- Motor Make: Siemens, ABB or Equivalent
- Insulation Class: H
- Protection Class: IP 55
- Cooling Method: TEFC

Gas Tightness Requirements:

- The fan and flexible joints will be gas tight and the gas tightness shall conform to the Class A or above of Eurovent "Guidelines for Gas Tight Fans", 1-10, 2005
- Shaft seal shall be achieved with at least 1 floating bush rings.

Balancing Requirements:

- The rotating assembly (i.e Impeller, Shaft and Pulley) shall be balanced both statically and dynamically.
- Balancing shall conform to VDI 2060 or any equivalent industrial balancing standard. The standard and grade used for balancing must be mentioned on the quote.

Vibration and Noise Limits:

- Vibration at the bearings should be less than 4.5 mm/sec.
- The vibration characteristics shall conform to the VDI 2056 or equivalent industrial vibration standard.
- Noise level at or below 90 dB(A), at a distance of 1.5 m, measured in accordance with AMCA 300/301 or equivalent industrial standard.

Accessories:

- Provision of Inspection Door with gaskets, ensuring leak tightness during operation considering pressure of inside medium
- Belt and Shaft Guards
- Flanged Inlet and Outlet, alongwith Flexible Joints (Gas Tight as mentioned above under heading "Gas Tightness Requirements")
- Variable Inlet Vane
- Outlet Damper

Spares(Each for Fan#1, #2 and #3):-

- Motor: 01 No
- Shaft: 01 No
- Impeller: 01 No
- Belts: 02 Sets
- Bearings: 01 Complete Set
- Seals: 01 Complete Set

Additional Requirements:

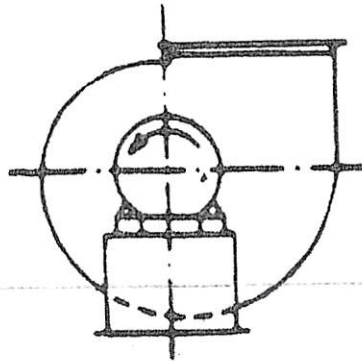
- The Fan must be factory assembled and tested.
- Fan must not be bigger than the mentioned max dimension.
- The supply must include all the necessary documents regarding Fan operation and installation i.e. Operation and Maintenance Manuals; Installation Manuals, Characteristic Curves etc
- 3rd Party Certificates for fan balancing, vibration measurements and noise levels shall be provided.

- 9/5
- The overall length and width of the fan must be kept as less as possible and the dimensions alongwith drawings must accompany the quote.
 - Fan motor wattage must be mentioned in the quote in addition to other technical specifications.

Fan Configuration for Fan 01:-

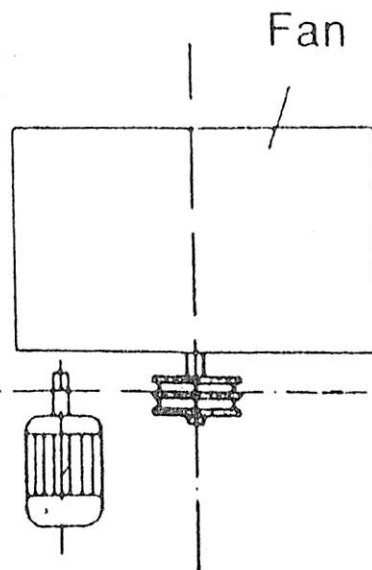
LG0 arrangement as per Eurovent 1/1 or Counter-Clockwise rotation when seen from the side Driver/Motor Side, with outlet at 0° to the vertical axis.

LG0



Both fan and motor arrangement are shown below:-

View from Driver/Motor Side

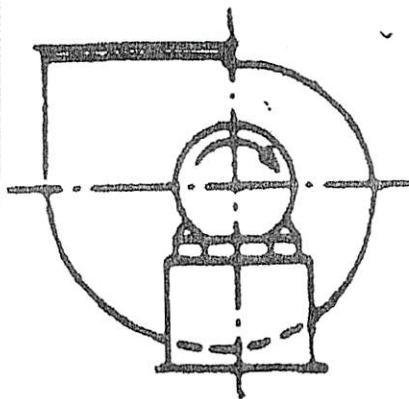


View from Top for Motor

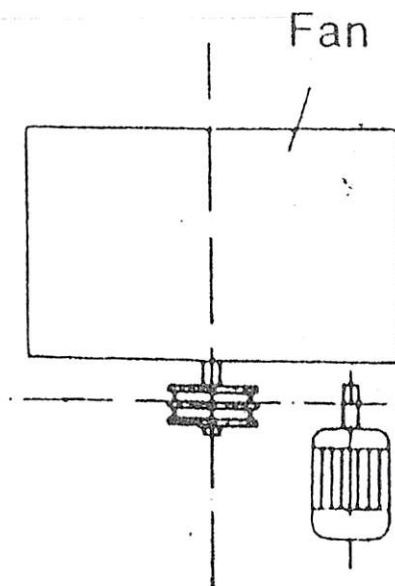
Fan Configuration for Fan 02 & Fan 03:-

RD0 arrangement as per Eurovent 1/1 or Clockwise rotation when seen from the side Driver/Motor Side, with outlet at 0° to the vertical axis. Both fan and motor arrangement are shown below:-

RD 0



View from Driver/Motor Side



View from Top for Motor