

We intend to purchase goods according to the details as per following:-

S. No.	Machine	Qty
1	Model No.SYST-100 (specification attached at page-02/04) OR EQUIVALENT	01
2	Model No. SMI-100/150-PCHE (specification attached at page-03~04/04) OR EQUIVALENT	01

Kindly send us your best offer in accordance with the following General Conditions as stated below:-.

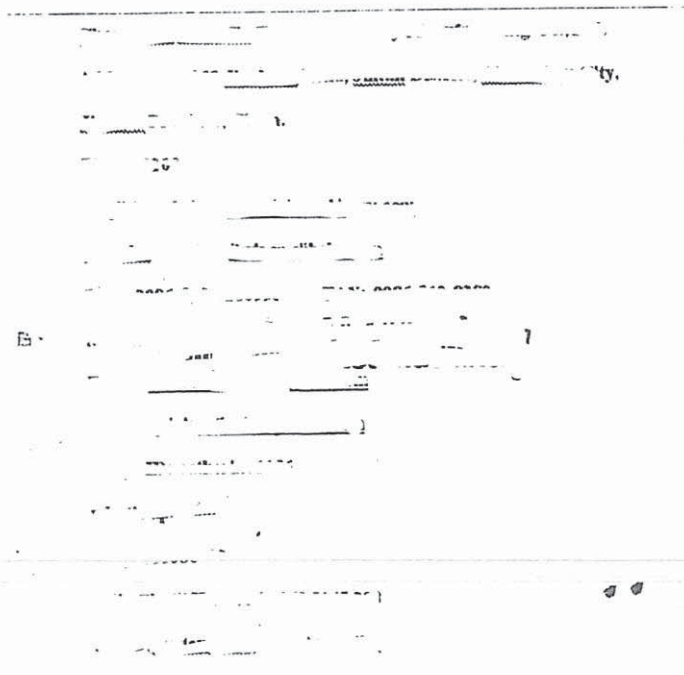
Ceramic Power Press Machine

Specifications

- 1) Can compress all kinds of ceramic power tablets
- 2) Fully automatic PLC control, stable performance
- 3) Imported hydraulic system

Main Technical Parameter

Model	SYST-100
Working pressure	100T
Ascending stroke	200mm
Feeding height	180mm
Diameter of the below mould	300mm
Max briquette diameter	200mm
output	3-4 cycle per minute
Motor power	11kw Servo-motor, Pull-rope encoder(Generally for common motor is 5.5KW,380 50Hz, 3phase)
Machine size	1.8*1.6*2.6M



Ceramic Power Press Machine

Specifications

PCHE series, hydraulic full auto dry powder compacting press of SHINBOTECH, is a press that performs dry powder compacting process of components of automobile, airplane, electronic equipment, semiconductor and other industrial parts in various fields of metallurgy, carbide, ferrite, and ceramic.

CHARACTERISTICS

- High-intensity and high-precision design
- Applied functional management system for high-efficiency and high-quality
- Electric-proportional control type precise control of pressure and flow
- Precise location control by absolute 1 μ m Linear scale
- Convenient to replace die set
- Function of withdrawal of die floating, die counter control
- Function of differential circuit and prefill high speed
- HMI control
- Application of multi-layer molding die set
- Applied EMSEC safety system

■ PCHE series Shinbotech Korea

No.	PART / MODEL	MP100/150-PCHE
1	Max. pressing capacity[Ton]	100/150
2	Max. ejecting capacity[Ton]	50/75
3	Upper ram stroke[mm]	300
4	Max. powder filling depth[mm]	150
5	Die floating capacity[Ton]	7~30
6	Die surface adjustment[mm]	± 5
7	Feeder stroke[mm]	350
8	Under/Over fill stroke[mm]	5
9	Motor power required[kw]	30
10	Compacts per minute[SPM]	2~6
11	Machine size-HxWxD[cm]	450*230*250

12	Machine weight[kg]	12000/14000
13	Dieset and Core type	with A / B / C type and Fixed/ Moving Core
14	Cycle control	PLC & HMI
15	Pressing tonage indicator	Digital Load Transmeter & Indicator
16	Pressure & Flow control	Electric Proportional Control
17	Cylinder position control	Digital Position Meter
18	Both pressurization method	Withdrawal Floating way
19	Lubricant supply system	Manual pots supply
20	Operation Method	Manual / Semi-Auto / Full Auto