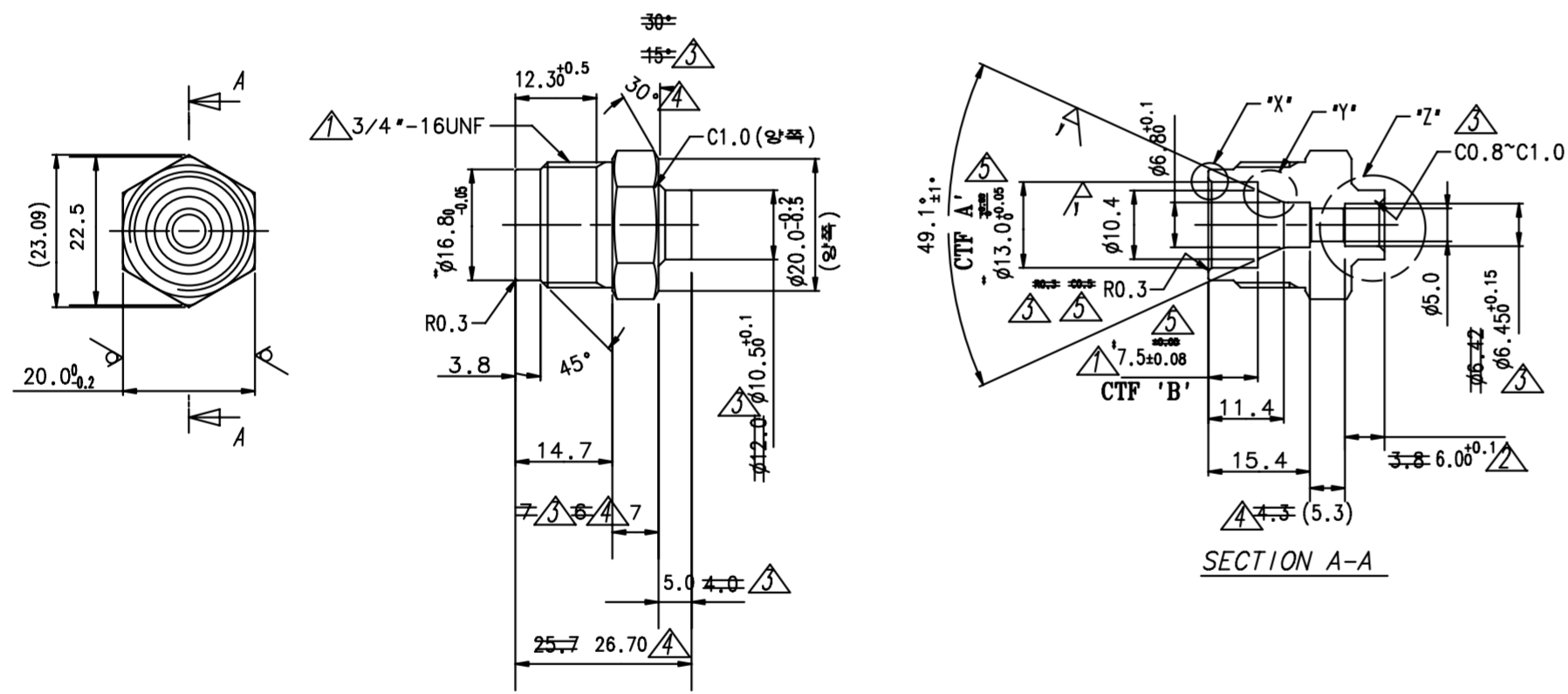


조립도



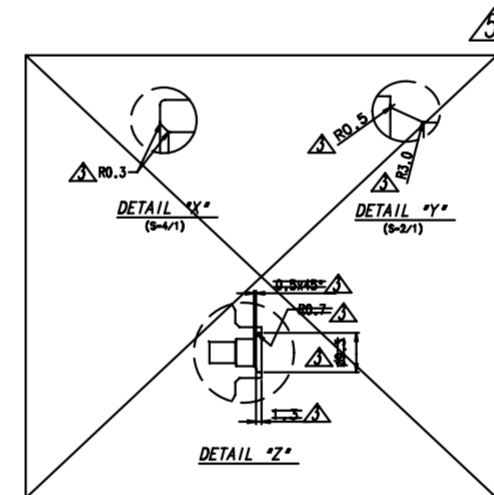
NIPPLE

REV. NO	DATE	MODIFIER	ENGINEERING CHANGE (EC)	REASON FOR EC	APPROVER
△	2010.12.07	JEONG.J.S	Modify the depth & screw thread	For the quality & installation convinience	KWAK.J.H
△	2010.12.27	JEONG.J.S	Increase a depth of the weld zone	For the leak tightness	KWAK.J.H
△	2011.08.03	KIM.J.Y	Modify the weld zone :12.0→10.5, 30°→15°, R0.3→C0.5, 7→6 4.0→5.0, φ6.42±0.03→φ6.45±0.15 Add : C0.8*1.0, R0.5, R3.0 Delete : 0.5X45°, R0.7, 1.3, φ9.3	Improve the productivity (weldability, assembling)	HA.Y.W
△	2011.09.29	KIM.J.Y	Modify a depth of hexagonal length :6→7, 25.7→26.7, 4.3→5.3, 15°→30°	For the compatibility to process check equipment	HA.Y.W
△	2013.12.07	JU WON	Modify : C0.5 → R0.3 CTF Tolerance Modify Delete : DETAIL *X*, *Y*, *Z*	Drawing standardization	HA.Y.W

NOTE

- 표면경도는 POLISHING 후 측정하고 100Hv 이상일 것.
- 파괴 토크는 정격 토크의 2배 이상일 것.
- 가공유, 이물 부착이 없고 깊이 방향으로 0.2mm 이상 찍힘이 없을 것.
- 본 부품은 ROHS 규정과 은트리를 규약을 만족하는 부품이어야 한다.
- 본 부품은 (DJ11-0041K)에 지정된 유해물질을 사용하지 않습니다.
- 기재하지 않은 치수의 공차는 도면의 하단에 표시된 일반공차중 CLASS B 를 적용할 것.

- THE SURFACE HARDNESS SHOULD BE ABOVE 100HV AFTER POLISHING TREATMENT.
- FRACTURE TORQUE VALUE SHOULD BE ABOVE TWICES OF NORMNAL TORQUE VALUE.
- THERE SHOULD BE NO ABNORMAL SCREATCH WHICH DEPTH IS ABOVE 0.2mm(DEPTH DIRECTION) AND ALSO, THERE SHOULD BE NO FOREIGN SUBSTANCES & PROCESSING OIL.
- THIS PARTS SHOULD BE SATISFIED WITH THE REGULATION OF ROHS AND MONTREAL PROTOCOL.
- THIS PARTS SHOULD NOT CONTAIN ANY SUBSTANCES WHICH ARE SPECIFIED IN (DJ11-0041K).
- UNDESIGNATED TOLERANCE SHALL BE APPLIED BY THE CLASS B IN THE TOLERANCE TABLE.



Technical Requirements		
Rated Torque	1/4"	120~180Kgf·cm
	3/8"	140~200Kgf·cm
	1/2"	180~240Kgf·cm
	5/8"	220~280Kgf·cm

For 1/4"

ENGINEERING SPEC. (CTF)	MUST CONFORM TO SAMSUNG SPEC.	TITLE		NIPPLE			
A NIPPLE OPENING φ13.0±0.08	HAZARD MATERIAL	UNIT	mm	DESIGNED	CHECKED	APPROVED	PROJECTION
B DEPTH φ7.5±0.08	MATERIAL SPEC	TOLERANCE	General	JEONG.J.S	LEE.S.Y	KWAK.J.H	
C		SCALE	1 : 1				SHEET NO
D		TYPE		2010.12.07	2010.12.07	2010.12.07	
E		SAMSUNG ELECTRONICS		CODE	DB67-01051A		

치수구분	정밀급	보통급
0.5초과 6이하	±0.05	±0.1
6초과 30이하	±0.10	±0.2
30초과 120이하	±0.15	±0.3
120초과 315이하	±0.15	±0.3

NO	CODE NO	PART	MATERIAL	Q'TY	REMARK
1	-	NIPPLE	C3771	1	