

AL SPECIFICATIONS

Description

Load capacity

Entry

Electr. hydr.

device

width

(mm)

(kg)

300
(2 persons
and tools)

Automatically performed according to machine guideline, po-
sively controlled, incl. aggregate, and emergency stop switch,
coded plug, connected at the basket, according to EN280

150
(1 person
and tools)

1 person workman basket, fold-away, according to EN280,
incl. emergency stop switch, coded plug, connected at the
basket

280
(2 persons
and tools)

With weight levelling performed according to machine
guideline, incl. emergency stop switch, coded plug, disc brake,
connected at the basket, not according to EN280

280
(2 persons
and tools)

With weight levelling, no CE-version, without electrical parts at
the basket, not according to EN280

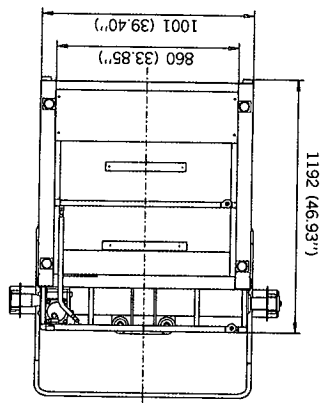
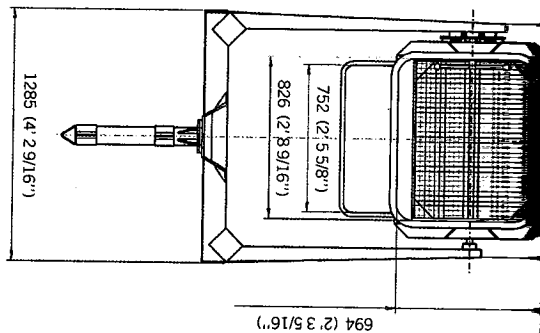
520

—

18

AL DRAWING

BB004B



BB030

