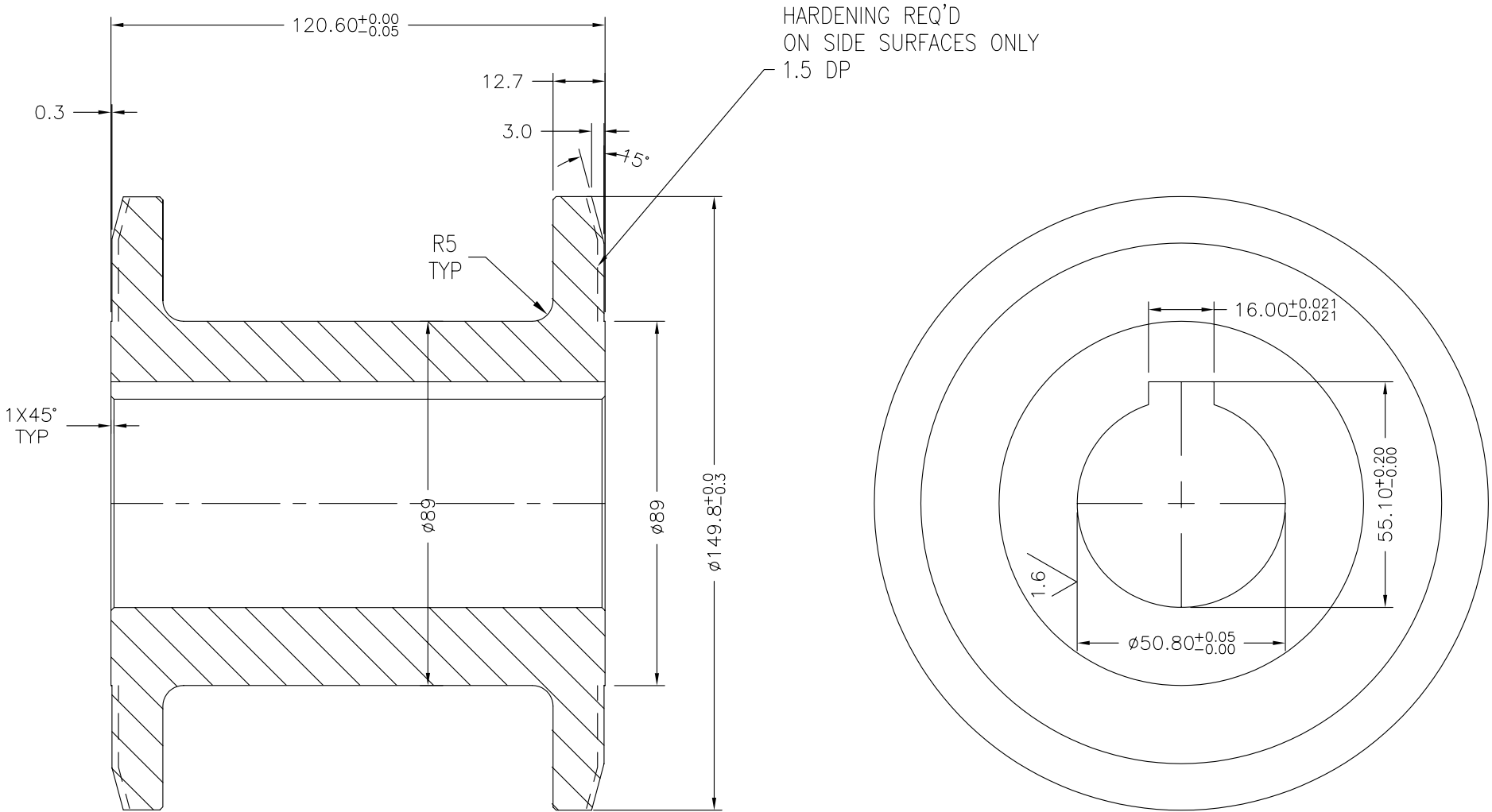



DATE	JOB NO.	QTY.
JAN/12	13483 C1	2
JUN/12	13523 C1	2



NOTE:
THIS DRAWING REPLACES
B-23503R6 ITEM #2 &
B-59760R1 ITEM #2

HARDEN 50-55 HRC

DATE:	REVISION	BY	ECN #	APP BY	REV LVL
All the information herein is the exclusive property of Corma Inc., it is disclosed with the understanding that it will be retained in confidence, that it will not be duplicated in whole or in part, that it will not be used for any other purpose than that for which it is disclosed, and that it will be returned to Corma Inc. on demand.					

		1	1045	Ø149.8 X 120.6	
DETAIL	DESCRIPTION	QTY.	MATERIAL	FINISHED SIZE	DRAWING
BILL OF MATERIAL					
TOLERANCES UNLESS OTHERWISE SPECIFIED. DECIMALS					10 McCLEARY COURT CONCORD, ONTARIO TEL: (905) 669-9397
mm	Inch	SCALE: 1:1.5	DATE: JAN/30/2012	DRAWN BY: J.L.	CHECKED & APPROVED BY:
X ±1 X.X ±0.3 X.XX ±0.13	.X ± .040 .XX ± .010 .XXX ± .005 FRACTIONS ± 1/16	ASSEMBLY: 830 CORRUGATOR			REF. DWG. B-59760R1;B-23503R6
ANGLES X ± 2° .X ± 1/2°		TITLE: RUN OUT GUIDE WHEEL			DRAWING No. : B-68522
					REV.