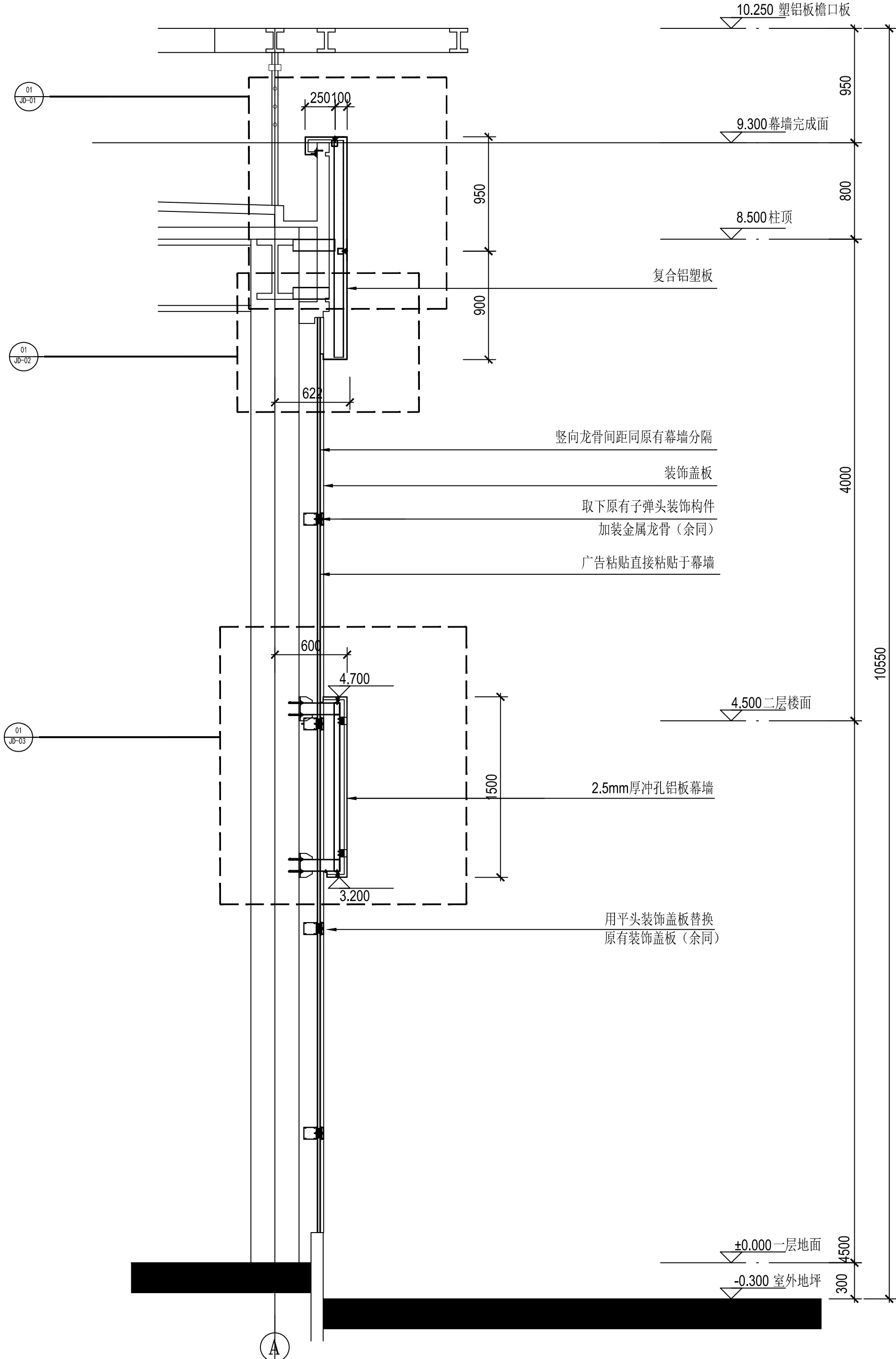
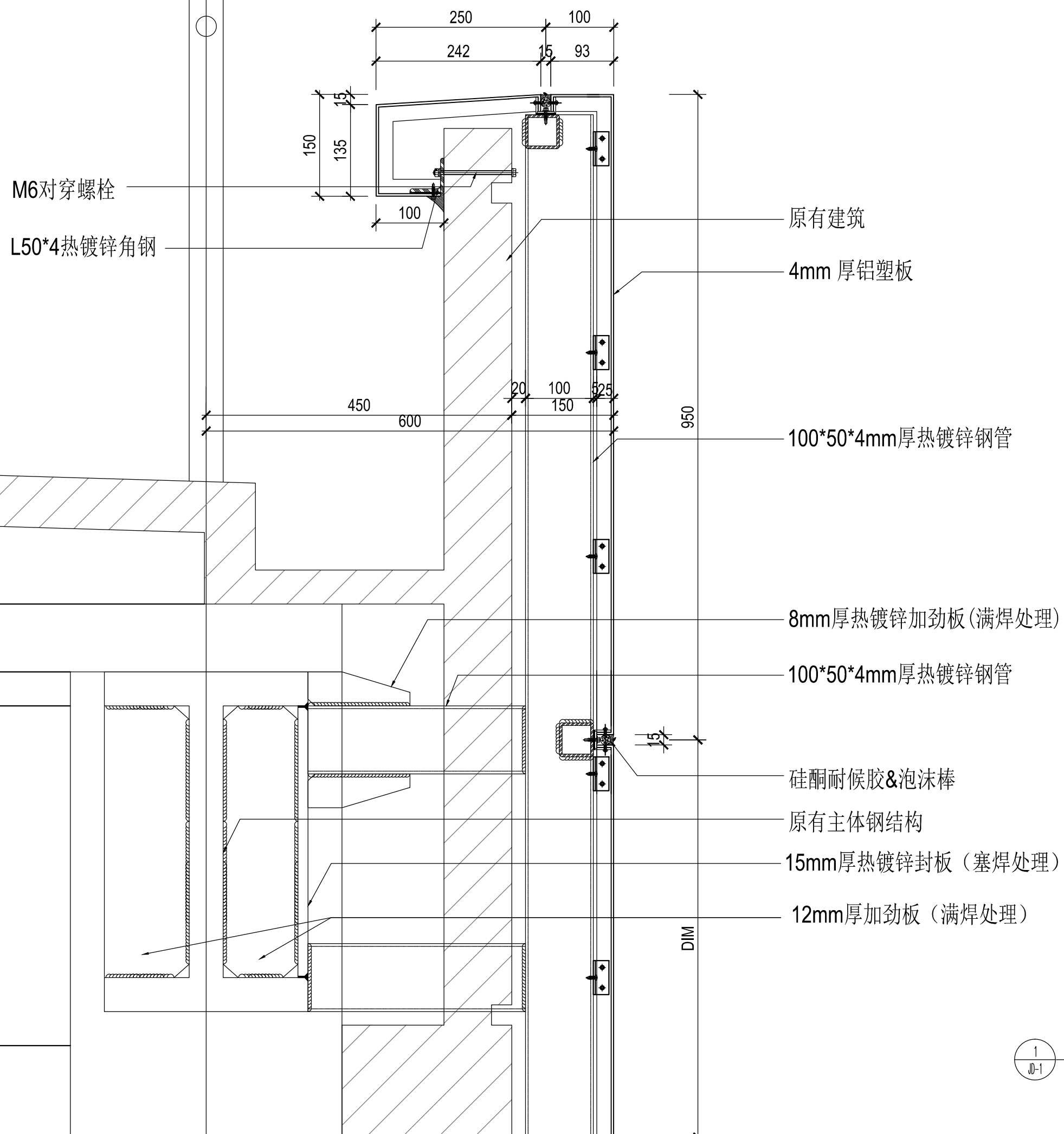

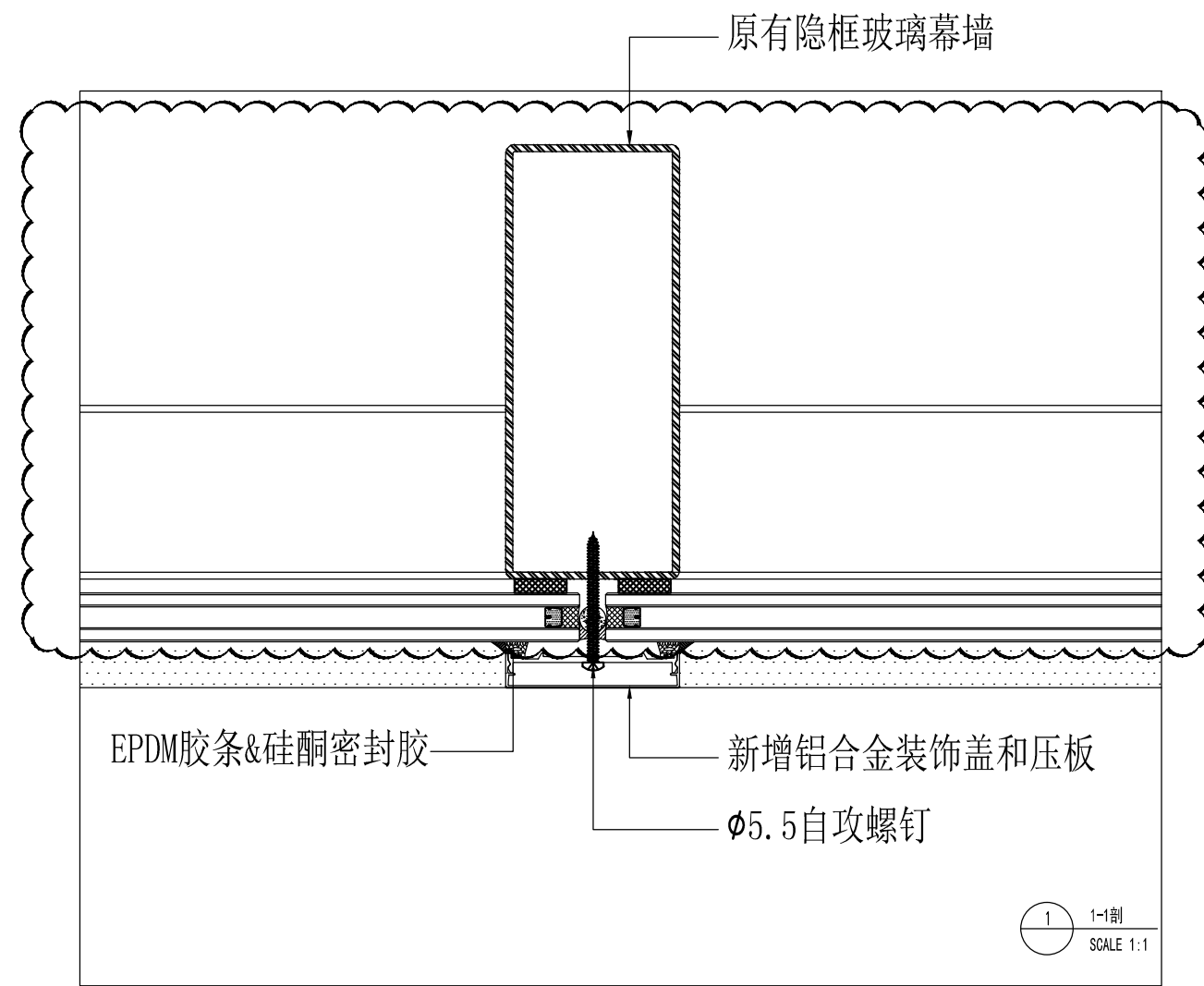


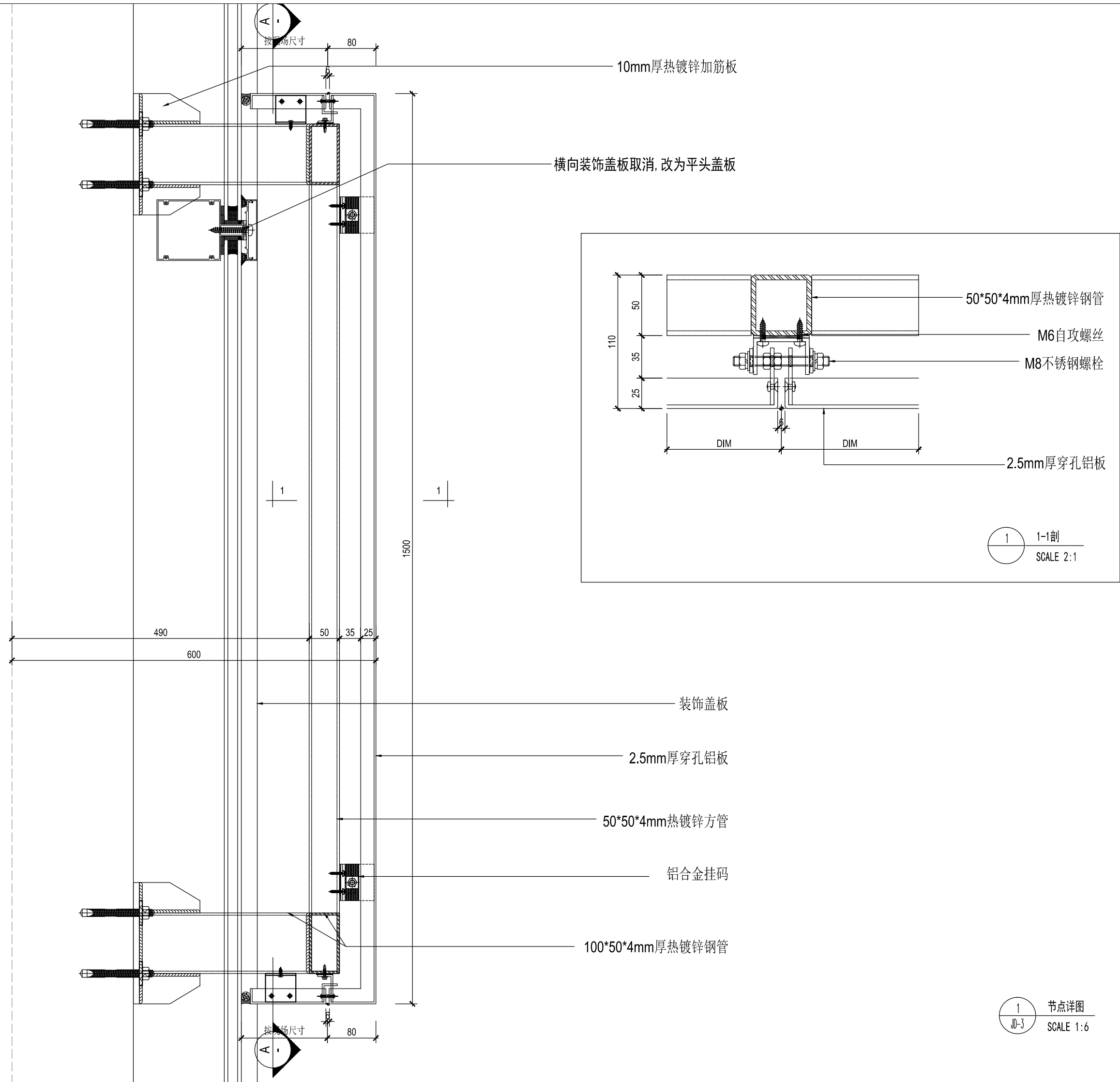
⊗-⊗轴立面图 1:150

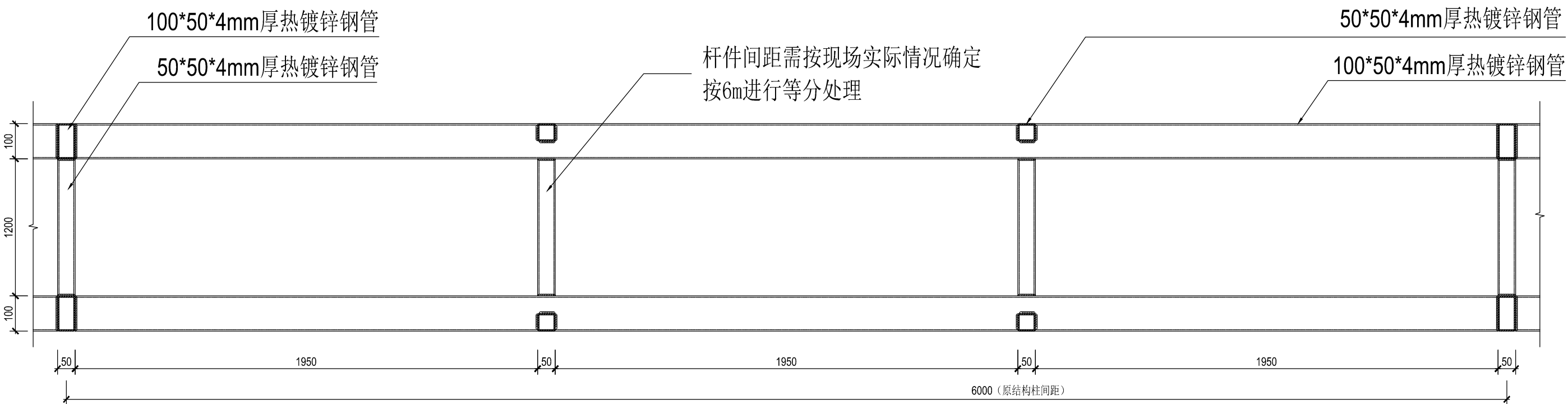


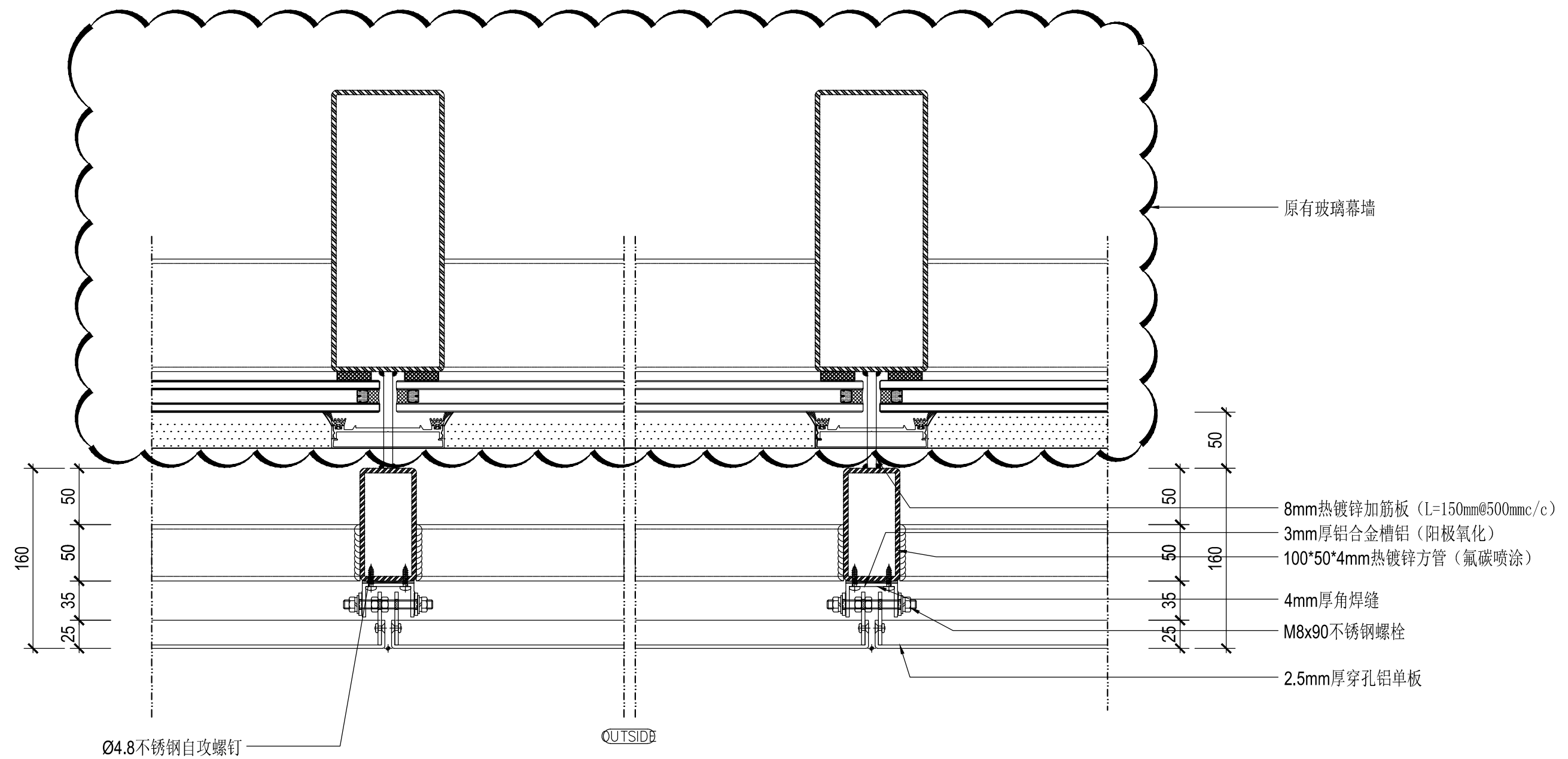
V2-1改造后剖面图 1:30











- 说明:
- 1、穿孔铝单板后的钢架表面处理均为氟碳喷涂
  - 2、所有焊缝均为4mm厚角焊缝, 焊缝等级为三级, 现场焊接
  - 3、新增的竖向钢龙骨间距同原有幕墙分隔