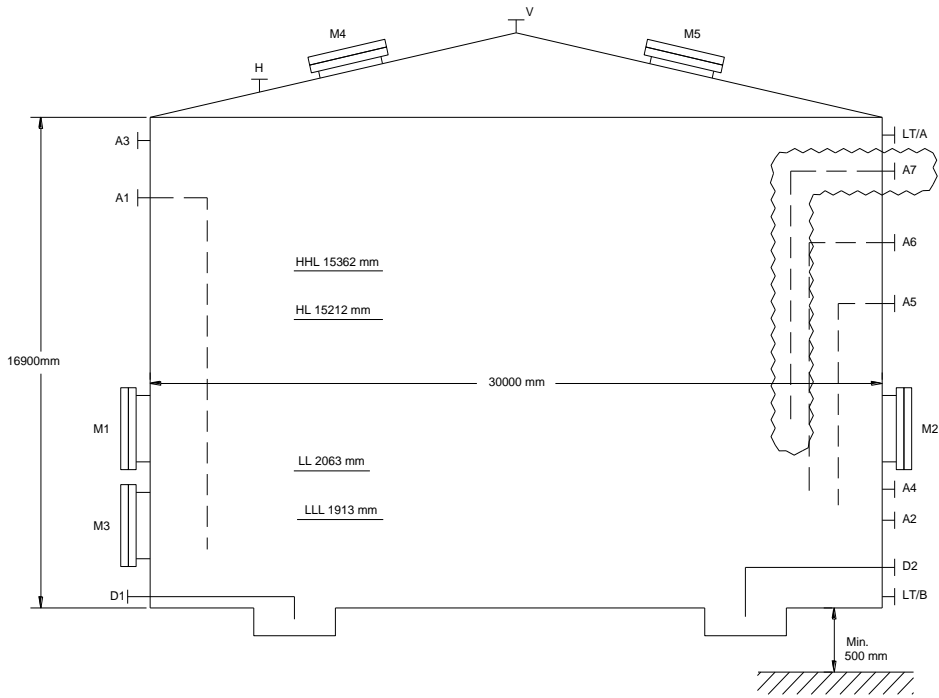


DATASHEET FOR FIRE WATER TANK

FIRE WATER TANK DATA SHEET				
1	GENERAL DATA			
2	ITEM	10-TK-0801	QUANTITY	1
3	SERVICE	FIRE WATER TANK	GEOMETRICAL CAPACITY	11939.85 m ³
4	TYPE	FIXED ROOF	OPERATING CAPACITY	m ³
5	INTERNAL DIAMETER	30000 mm	DESIGN	10602 ABOVE GROUND
6	GEOMETRICAL HEIGHT	16900 mm		
6	CLIMATE DATA (NOTE 1)			
8	CLIMATE		MAX WIND SPEED	m/s
9	TEMPERATURE max/min	48 / 5 ° C		
10	BAROMETRIC PRESSURE	990 (min) mbar		
11	OPERATING DATA			
12	STORED FLUID	FIRE WATER	STORAGE TEMPERATURE	AMB. ° C
13	SUSPENDED SOLIDS		STORAGE PRESSURE	ATM. barg
14	CORROSIVE COMPOUNDS	NO	DENSITY AT STORAGE TEMP.	998 kg/m ³
15	BLANKETING GAS	NO	FLASH POINT	° C
16	BLANKETING GAS PRESSURE	mbar	VISCOSITY AT STORAGE TEMP.	cP
17	DESIGN DATA			
18	CODE	NFPA 22	CORROSION BOTTOM / 1" COURSE	3 (NOTE 2) mm
19	DESIGNN PRESSURE	ATM./FULL OF WATER barg	CORROSION OTHER COURSE/ROOF	3 mm
20	DESIGNN TEMPERATURE	65 ° C		
21	MATERIALS			
22	ROOF	CS	SHELL	CS
23			BOTTOM	CS
24	INTERNAL PROTECTION	(NOTE 2)		
25	ACCESSORIES			
26	HEATING COIL	NO	COOLING RING	NO
27	ROOF INSULATION	NO	FOAM CHAMBER	NO
28	SHELL INSULATION	NO	VENT	YES (NOTE 3)
29	BREATHING VALVE	NO	MIXER	NO
30	SUCTION HEATER	NO	JET MIXER	NO
31	GAUGING AND SAMPLING HATCH	YES		
32	EXTERNAL BOARD LEVEL INDICATOR	YES		
33				
34				
35	INSULATION AND PAINTING			
36	INSULATION	NO		
37	PAINTING (EXTERIOR)	YES		
38	PAINTING (INTERIOR)	YES		
39				
40				
41				

FIRE WATER TANK DATA SHEET

05



LIST OF CONNECTIONS

ITEM	NO	DIAMETER NPS	RATING	FACE	SERVICE
A1	1	16"	150	RF	INLET PIPE
A2	1	30"	150	RF	OUTLINE PIPE
A3	1	18"	150	RF	OVER FLOW LINE
A4	1	18"	150	RF	TEST LINE
A5	1	HOLD (NOTE 5,6)	150	RF	INLET PIPE FROM PSV OF 10-P-0803C
A6	1	HOLD (NOTE 5,6)	150	RF	INLET PIPE FROM PSV OF 10-P-0803B
A7	1	HOLD (NOTE 5,6)	150	RF	INLET PIPE FROM PSV OF 10-P-0803A
M1/M2	2	24"	150	RF	SHELL MAN HOLE
M3	1	20"	150	RF	SHELL MAN HOLE
M4/M5	2	24"	150	RF	ROOF MAN HOLE
D1/2	2	4"	150	RF	DRAINS
V	1	16" (NOTE 4)	150	RF	VENT
LT A/B	2	2"	300	RF	STAND PIPE (FOR LEVEL TRANSMITTERS)
H	1	8"	150	RF	HATCH

NOTES

- 1) Refer to 10-00-DSH-PR-0001-L "Process & Utilities ".
- 2) Epoxy lining to be provided regard to piping specification.
- 3) Vent shall be equipped with bird screen.
- 4) Size to be verified by vendor based on pump rate (in/out rate: 1000 m³/hr).
- 5) Hold items will be finalized based on pump's vendor data.
- 6) The discharge of PSVs entering the fire water tank shall extend to below the normal water level.