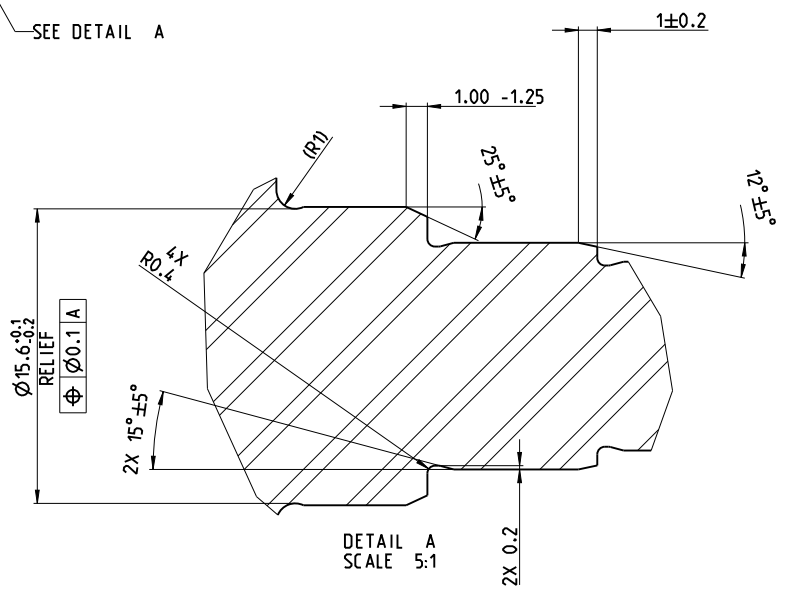
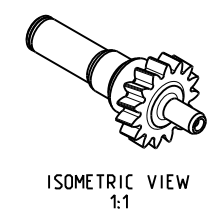
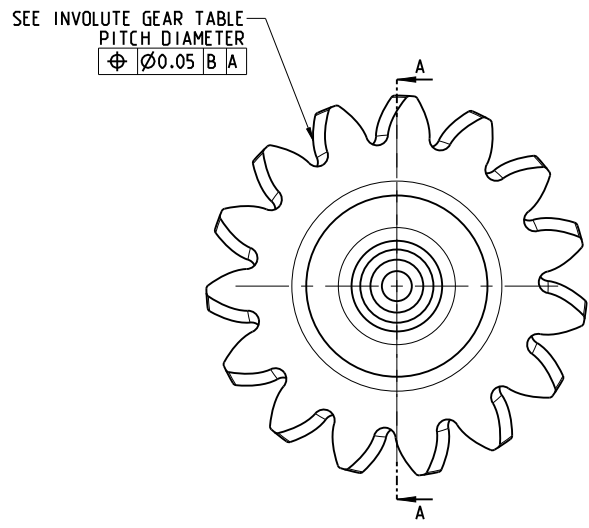
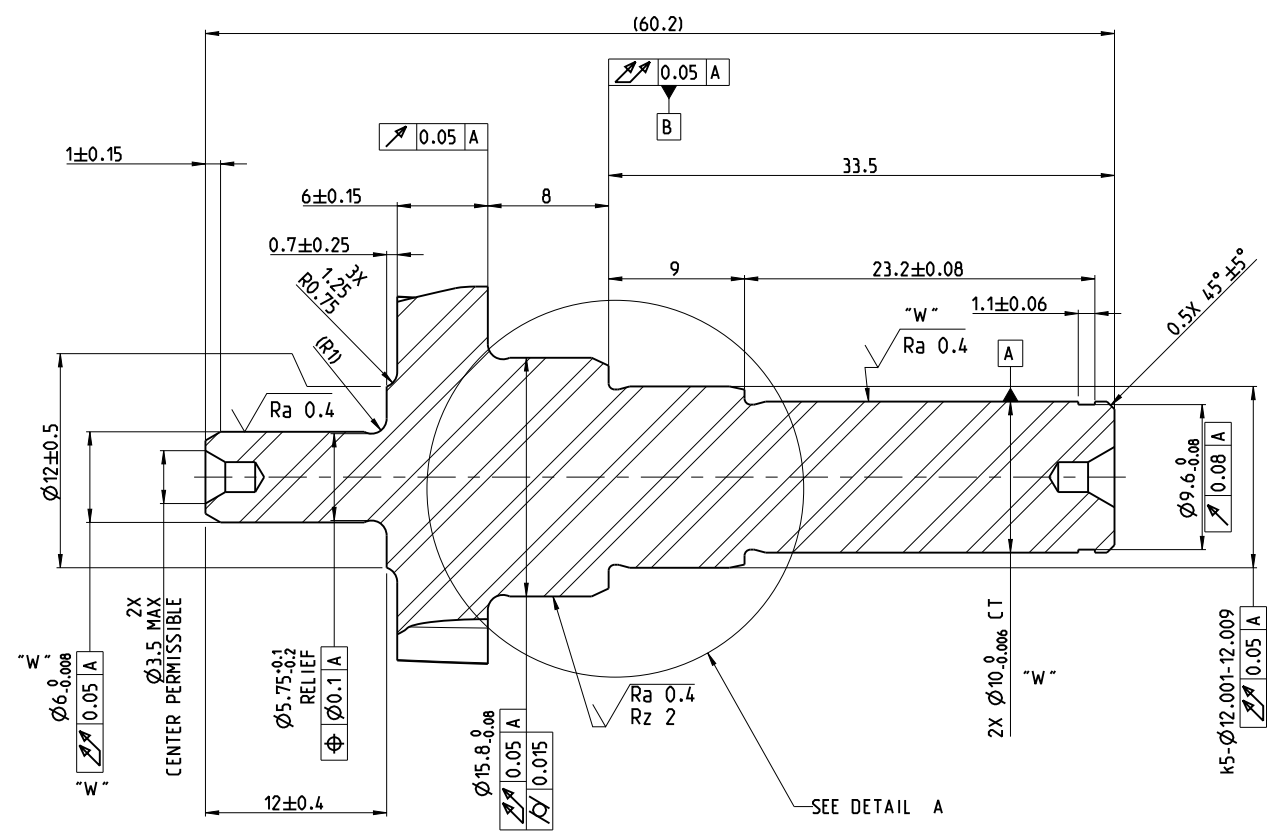
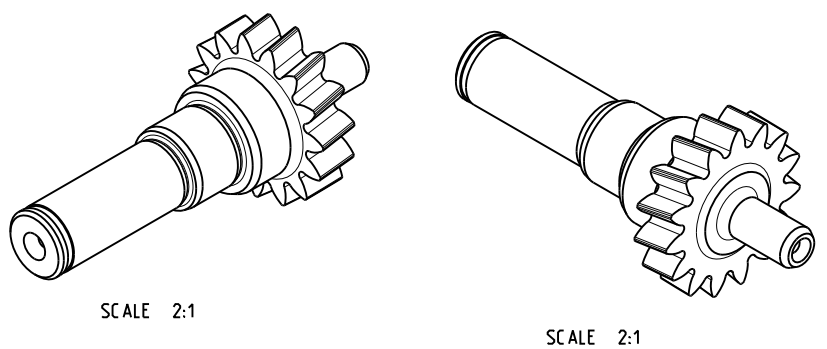


- Supporting specifications (applicable in the following order):
  - ATE N 101 00.02 (labelling of techn. doc.), 2015-06-15 "W"
  - Parts free of loose burrs, contamination, fingerprints and residues of oil and grease, undefined features, as well as impact and grooves
  - Clean all particulate and package to prevent corrosion.
  - Coat fully with MIL-PRF-81309 TYPE III, BW RUSTOP P-260, or pre-approved alternative
  - Gear to be formed to spec, not model
  - General tolerances for the part in accordance with DIN ISO 2768-mK-E
  - Material: AISI 8620, 20CrMo, 20CrNiMo
    - Surface hardness: HRC 55min
    - Core hardness HRC 30-40.
    - Case harden depth: 0.5-0.8mm



BASIC GEAR DATA	
TYPE OF GEAR	HELICAL
MATING GEAR PART/TRC #	BECVP-1169-00/TRC 05017000
NUMBER OF TEETH	15
NORMAL MODULE	1.4000
NORMAL PRESSURE ANGLE	20.0000°
HELIX ANGLE	8.0000°
HELIX HAND	LEFT
STANDARD PITCH DIAMETER	21.2063 BASIC
BASE CIRCLE DIAMETER	19.9044 BASIC
NORMAL BASE PITCH	4.133 BASIC
LEAD	474.0377 BASIC
TOOTH PROPORTIONS DATA	
NORMAL CIRC. TOOTH THK'SS	2.554/2.622
OUTSIDE DIAMETER	25.248±0.1
ROOT DIAMETER	18.710/18.810
FORM DIAMETER	20.211 MAX
NORMAL TIP RADIUS	0.13
EFFECTIVE OUTSIDE DIAMETER	24.889
NORMAL FILLET RADIUS	0.74 MIN
PIN DIAMETER	2.5000
NUMBER OF PINS TO USE	2
MEASUREMENT OVER PINS	25.375/25.502
NUMBER OF TEETH SPANNED	3
SPAN MEASUREMENT	11.032/10.968
COMPOSITE INSPECTION DATA	
QUALITY LEVEL	AGMA Q6
TOTAL COMPOSITE TOLERANCE	0.087
TOOTH TO TOOTH TOLERANCE	0.032
TEST RADIUS	TBD
TEST LOAD	9 N BASIC
MASTER GEAR DATA	
MASTER GEAR ID	TBD
CLASS	C1A
NUMBER OF TEETH	85
NORMAL CIRCULAR TOOTH THK'SS	1.671 BASIC
HELIX ANGLE	8.0000°
HAND OF HELIX	RIGHT
OUTSIDE DIAMETER	121.691 BASIC
MAXIMUM ROOT DIAMETER	115.25 BASIC
TEST RADIUS	TBD

Änderungstabelle / Modification table	
C	ECR0866 CHANGE FIT TO K5-Ø12.001-12.009 (WAS J5 Ø11.997-12.005)
B	ECR0806 UPDATED GEAR TEETH NOTE, REMOVED # OF TEETH
A	ECR0764 INITIAL C SAMPLE PRODUCTION RELEASE

Änderungstabelle / Modification table			
Document version	Previous version	Changed items	Change description (including number)
C	A	-	ECM PTA-16100668

Aenderungstabelle / Modification table	
Surface	OL - / -
Material	SEE NOTES
Weight	calculated - g ± 10%
Weight	weighted - g ± %
3D-Model	BECVP-2133-00.C.2.Released.PART
Scale	4:1
Dimensions in millimeters	Drawing TRC05013000_DRW_100.C.3.Released
For internal use only	
Designed by	J SINNEHA
Released by	[Redacted]
Date	11/02/16
Department	P TR E P&T eM HE
Designation	GEAR, PINION, STAGE 1
Document key	TRC05013000 DRW 100 C
Pages	1 of 1

Tolerance for plastic parts EN 58530-1  
 Auxiliary dimension DIN 406 - 10  
 Theoretical dimension ISO 1101 Part edges ISO 13715  
 Unfinished dimension DIN 406 - 10  
 Surface quality ISO 1302 Tolerances Size ISO 14405