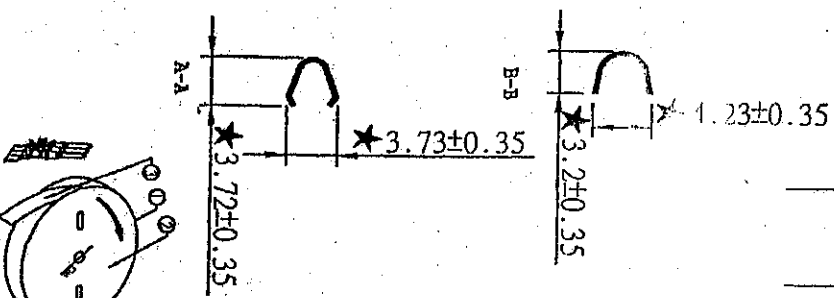
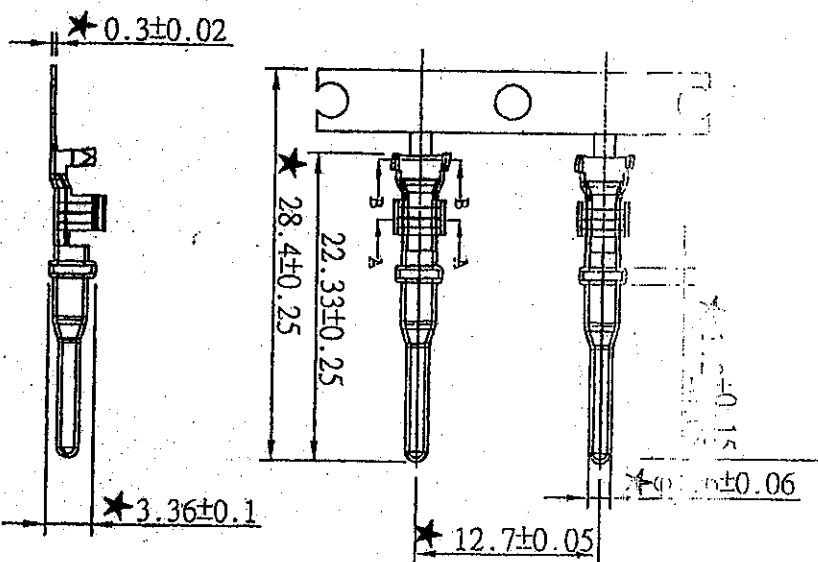


REVISIONS



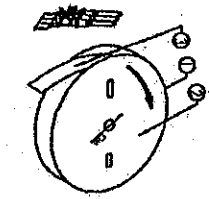
P/N: T1270-X-0258

电镀厚度
0-基材无电镀处理
1-GOLD FLASH
2-3u"
3-10u"
4-15u"
5-30u"
6-镀锡
7-镀银
8-镀铜
9-3u"

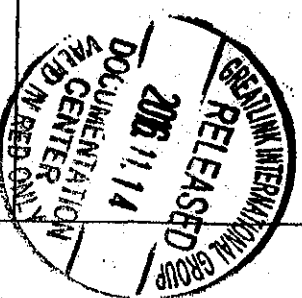
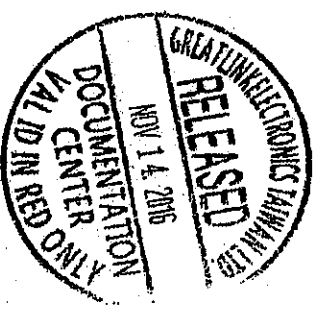
NOTE:

1. MATERIAL: 铜合金 硬度190°~210°
2. 表面处理: 镀层500"以上, 镀金6/F
3. 每盒端子数量: 4
4. 端子材料不能有扭曲、变形, 最大1米不能超过1.0mm
5. 端子高低脚落差≤0.08mm
6. 收料方向: 封带朝下, 朝压口朝外, 顺时针收料
7. 公差公差为±0.15mm
8. 模具编号为M16159

电鍍后收料方向

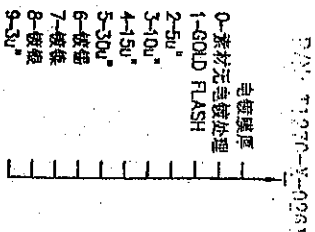


需符合RoHS & Lead Free

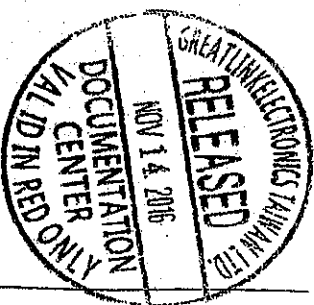




編號	022-E-M-10701	圖本	1	版次	0
收文日期	11/14/2016	審核日期	11/14/2016	核准	
161114	15/18				

DRAWN BY		DATE	PART/DRAWING NUMBER
JERRY		11/14/2016	M960099007
CHECKED BY		DATE	
APPROVED BY		DATE	
11/14/2016			
PAGE		REMARK	
1/1			
<p>COMPUTER NUMBER: C7L-E-M-10701</p> <p>TERMINAL-ECU, Geolab</p> <p>P/N-HDM-HDSMG3</p>			



此後回收方向



		TITLE TERMINAL/ECU, Gscclb P/N:HDW-H9SFCA XXXXXXXXXXXXXXXXXXXX	
greaseclick International Group			
DRAIN BY <i>Jerry</i>	DATE 11/14/2016	PART/DRAWING NUMBER M960099006	
CHECKED BY	DATE		
APPROVED BY 	DATE		
PAGE 1/1	REMARK		
ISSUE 1		SCALE: NONE	
TOLERANCES UNLESS NOTED:		UNIT: mm	
COMPUTER NUMBER: GTL-E-M-10699			