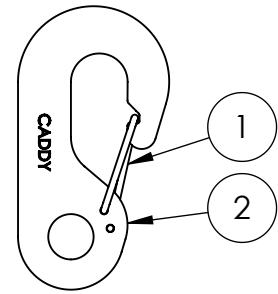
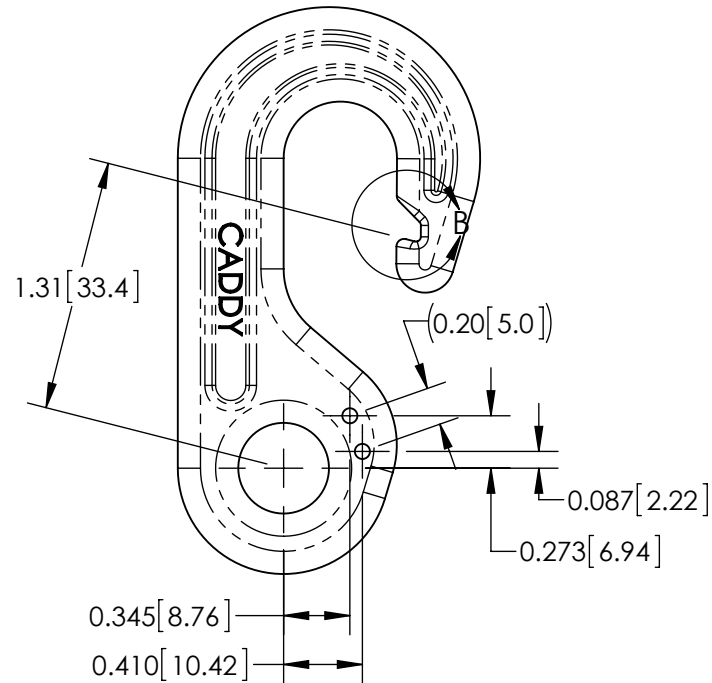
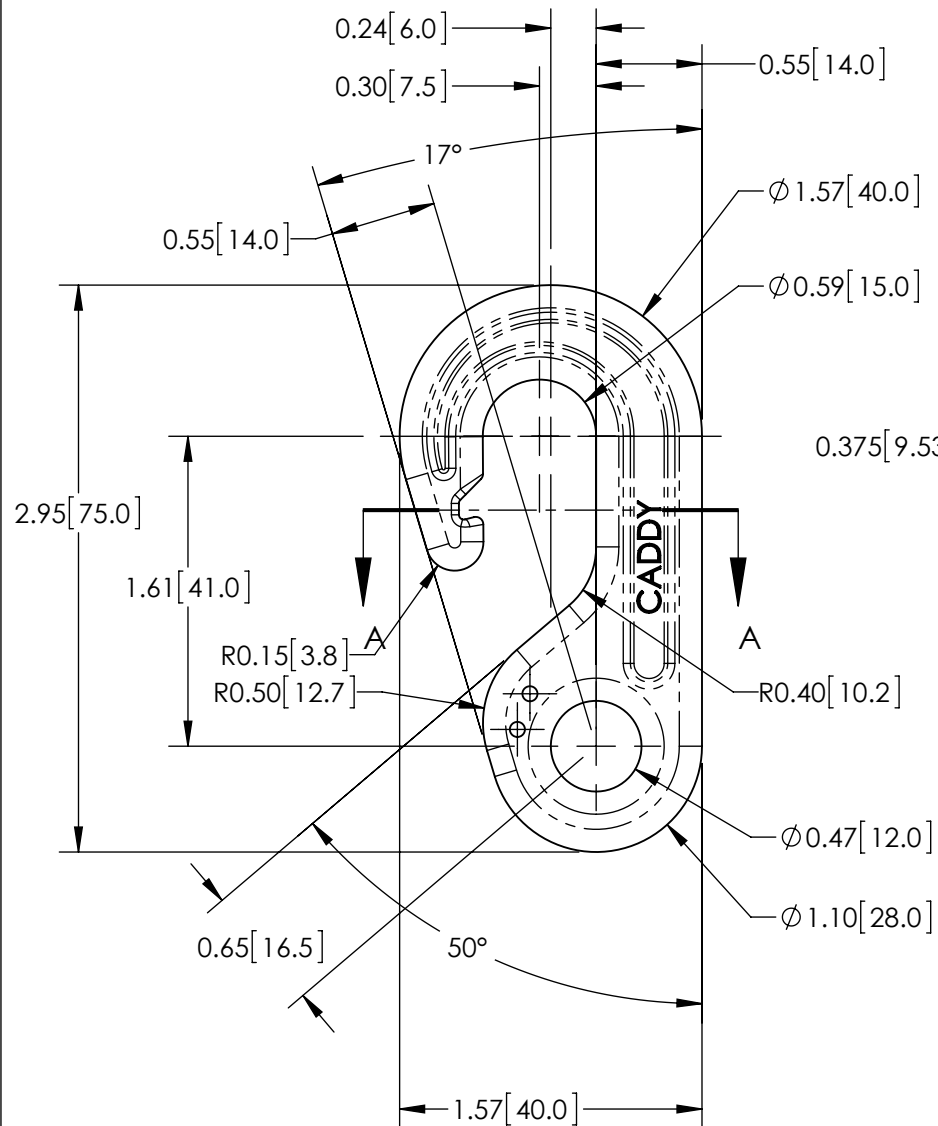
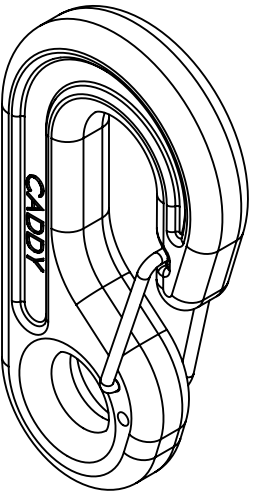


ITEM	PART NO.	QTY.	DESCRIPTION
1	SL6HCS	1	CATENARY HOOK, RETAINER SPRING
2	SL6HCF(X)	1	CATENARY HOOK, SNAP, FORGED

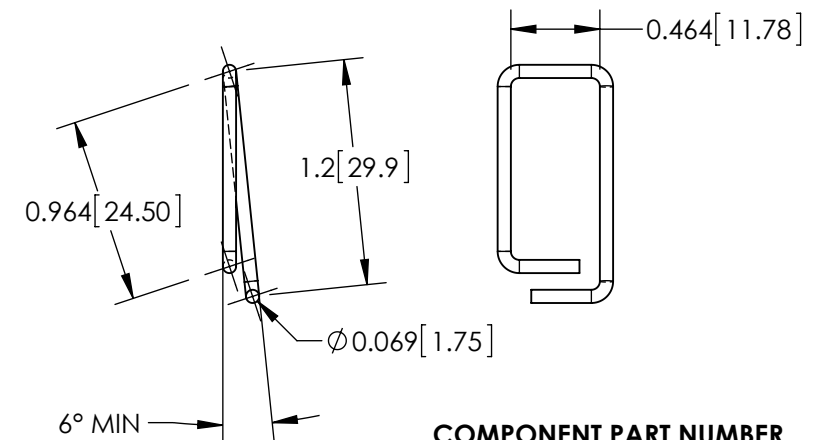


SPEED LINK ——— SL6HC(X) MATERIAL S - STAINLESS
 NONE - STEEL
 6mm Ø CABLE ——— CATENARY HOOK ASSEMBLY




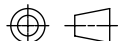
SL6HCF - STEEL
SL6HCFS - STAINLESS

1. ALL COMPONENTS AND FINISHES: ROHS AND REACH COMPLIANT
2. MATERIAL: (SEE PART LOGIC)
 - FORGED ALLOY STEEL, 40Cr, FINISH: MAGNECOTE or DACROMET (HEXAVALENT CHROME PROHIBITED)
 - AISI 304 STAINLESS STEEL, FINISH: PLAIN
3. REQUIRED LOAD 6,500LB [28.9kN]
4. NO BURRS OR SHARP CORNERS
5. LABEL TO INCLUDE DATE CODE/BATCH NUMBER PER ES229



1. RoHS AND REACH COMPLIANT
2. MATERIAL AISI 316 (DIN 1.4401) SPRING TEMPER

© 2017, 2018 Pentair All Rights Reserved

0	RELEASE TO QUOTE			1014827	6NOV17	EJW	DAK	JAW		
REV	DESCRIPTION			ESN #	DATE	DRN	CHK	APP	QA	MFG
TOLERANCE (INCH) UNLESS NOTED ANGULAR TOLERANCE: $\pm 1^\circ$ FRACTIONAL TOLERANCE: $\pm 1/32$ TWO PLACE DECIMAL: ± 0.01 THREE PLACE DECIMAL: ± 0.005				 PENTAIR				THIRD ANGLE PROJECTION 		
TOLERANCE [mm] UNLESS NOTED ANGULAR TOLERANCE: $\pm 1^\circ$ ONE PLACE DECIMAL: ± 0.3 TWO PLACE DECIMAL: ± 0.13				TITLE: HOOK SPEED LINK CATENARY						
B SIZE		SHT	1 OF 1	SCALE 1:1	DWG C16-20-SLHC6				REV 0	