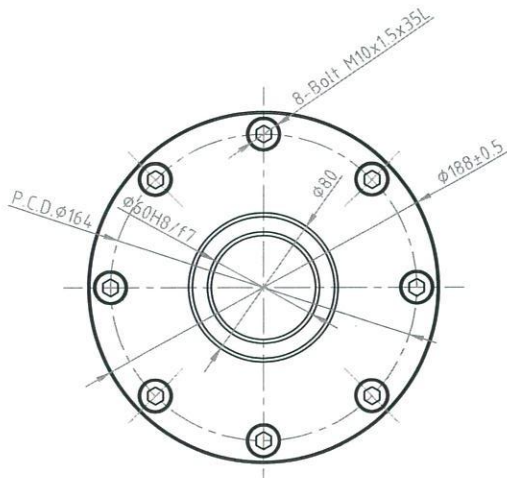
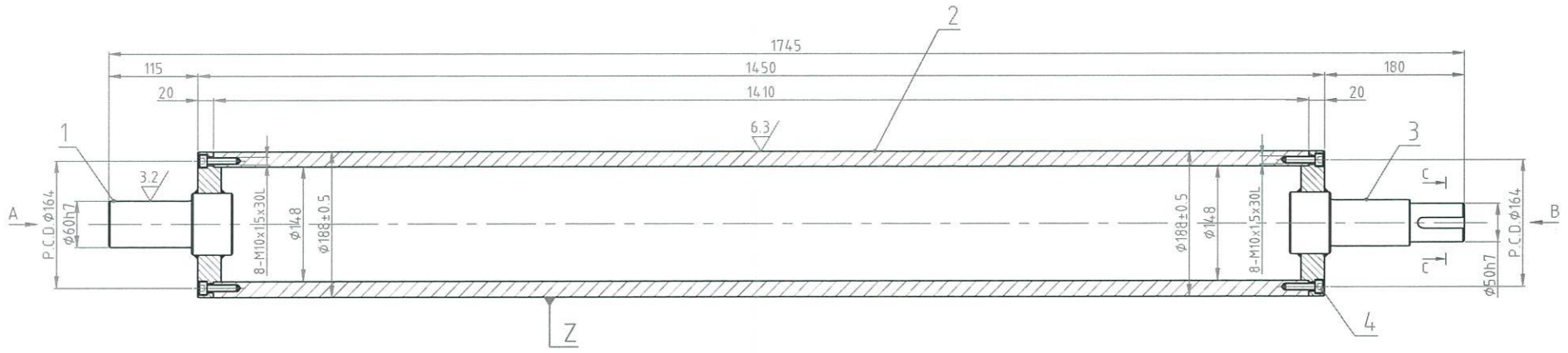
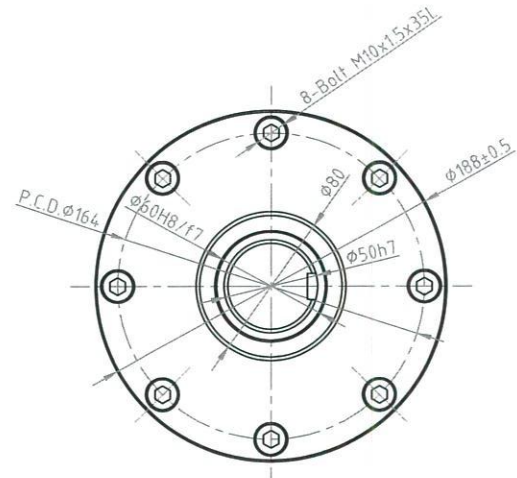


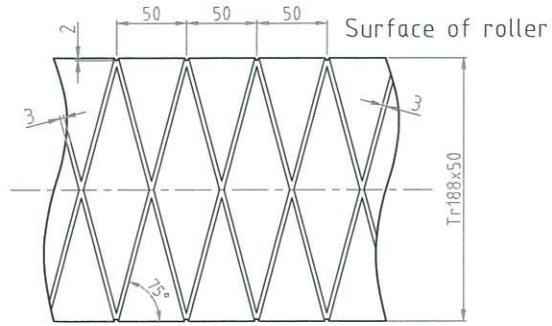
TYRM-MRCS-200



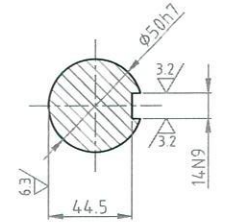
Views : A
1 : 2



Views : B
1 : 2



Detail : Z
1 : 1.5

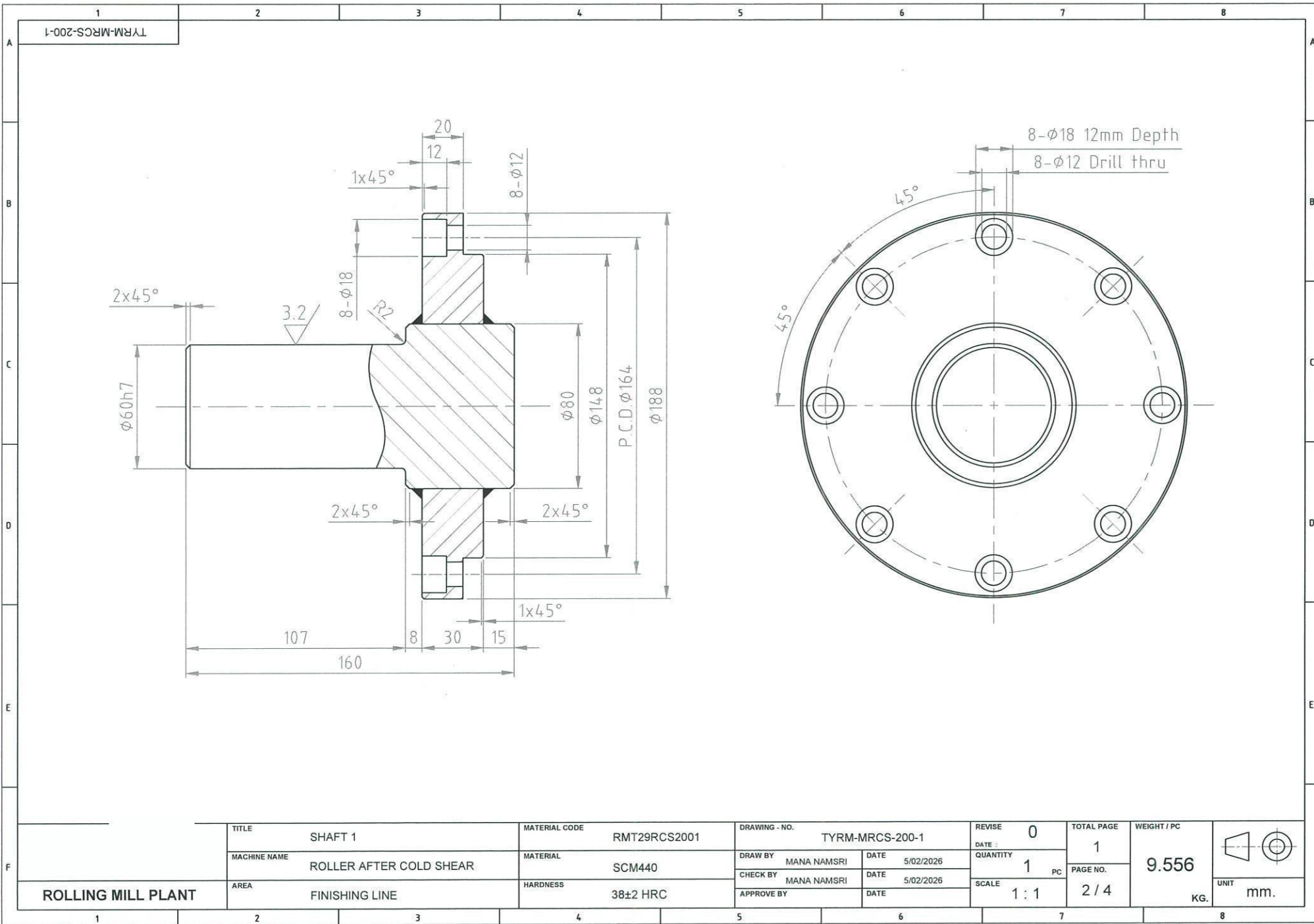


Section C-C
1 : 2

4	BOLT M10	8.8	16	-	L = 30 mm.
3	SHAFT 2	SCM440	1	11.254	TYRM-MRCS-200-3
2	ROLLER	FCD500	1	96.669	TYRM-MRCS-200-2
1	SHAFT 1	SCM440	1	9.556	TYRM-MRCS-200-1
No.	NAME	MATERIAL	QTY.	WEIGHT/PC (KG.)	ASSEMBLY DRAWING NO.

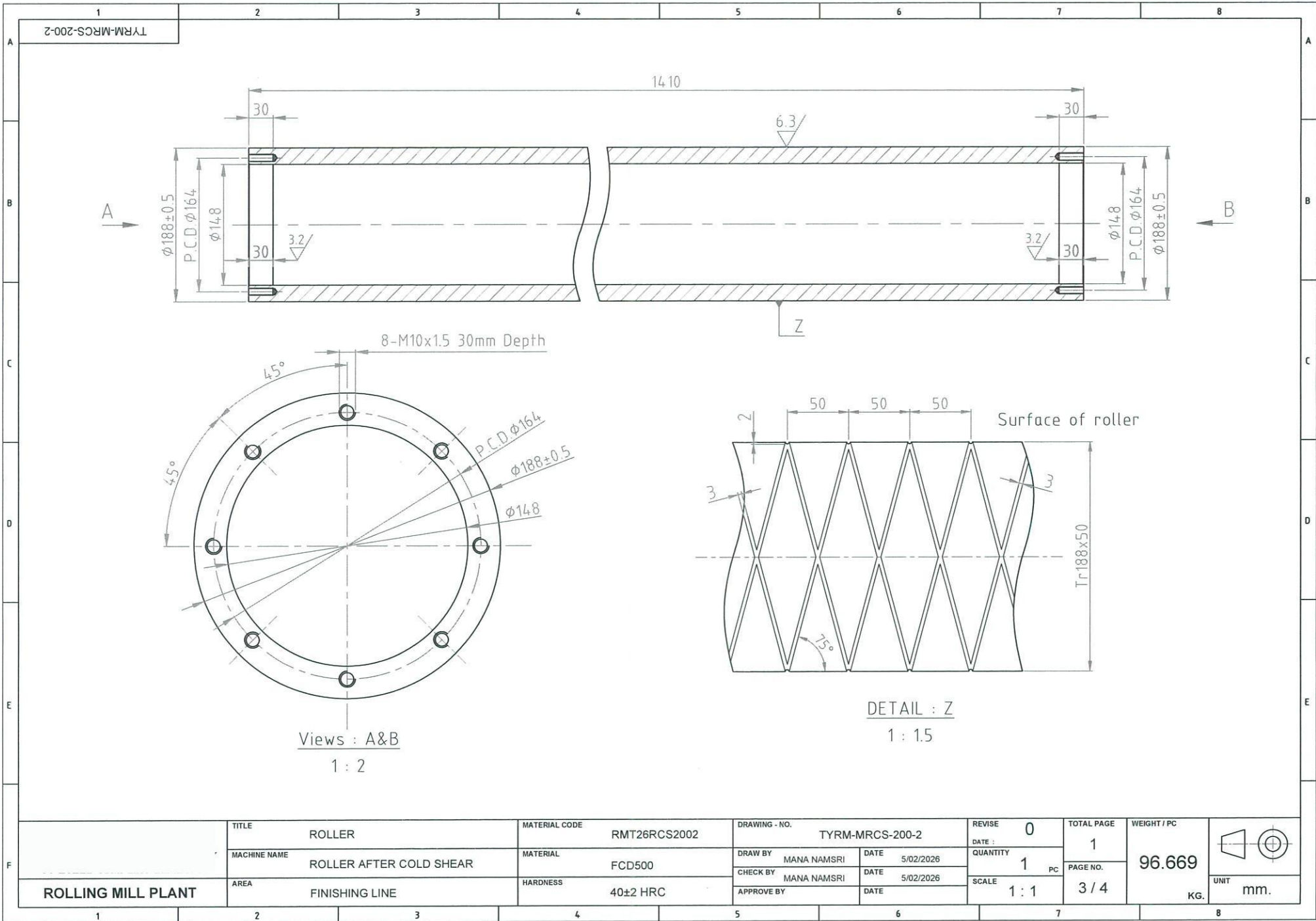
ROLLING MILL PLANT	TITLE	ROLLER AFTER COLD SHEAR ASSEMBLY	MATERIAL CODE	RMT26RCS200	DRAWING - NO.	TYRM-MRCS-200		REVISE	0	TOTAL PAGE	1	WEIGHT / SET		
	MACHINE NAME	ROLLER AFTER COLD SHEAR	MATERIAL	SCM440 / FCD500	DRAW BY	MANA NAMSRI	DATE	5/02/2026	DATE	0	QUANTITY	1		117.48
	AREA	FINISHING LINE	HARDNESS	-	CHECK BY	MANA NAMSRI	DATE	5/02/2026	SCALE	1 : 1	SET	1 / 4		

ITEM 1



ROLLING MILL PLANT	TITLE	SHAFT 1	MATERIAL CODE	RMT29RCS2001	DRAWING - NO.		TYRM-MRCS-200-1		REVISE	0	TOTAL PAGE	1	WEIGHT / PC			
	MACHINE NAME	ROLLER AFTER COLD SHEAR	MATERIAL	SCM440	DRAW BY	MANA NAMSRI	DATE	5/02/2026	DATE	5/02/2026	QUANTITY	1	PAGE NO.		2 / 4	9.556
	AREA	FINISHING LINE	HARDNESS	38±2 HRC	CHECK BY	MANA NAMSRI	DATE	5/02/2026	DATE	5/02/2026	SCALE	1 : 1	UNIT		mm.	

1-1



TYRM-MRCS-200-2

A

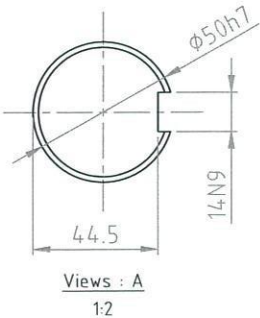
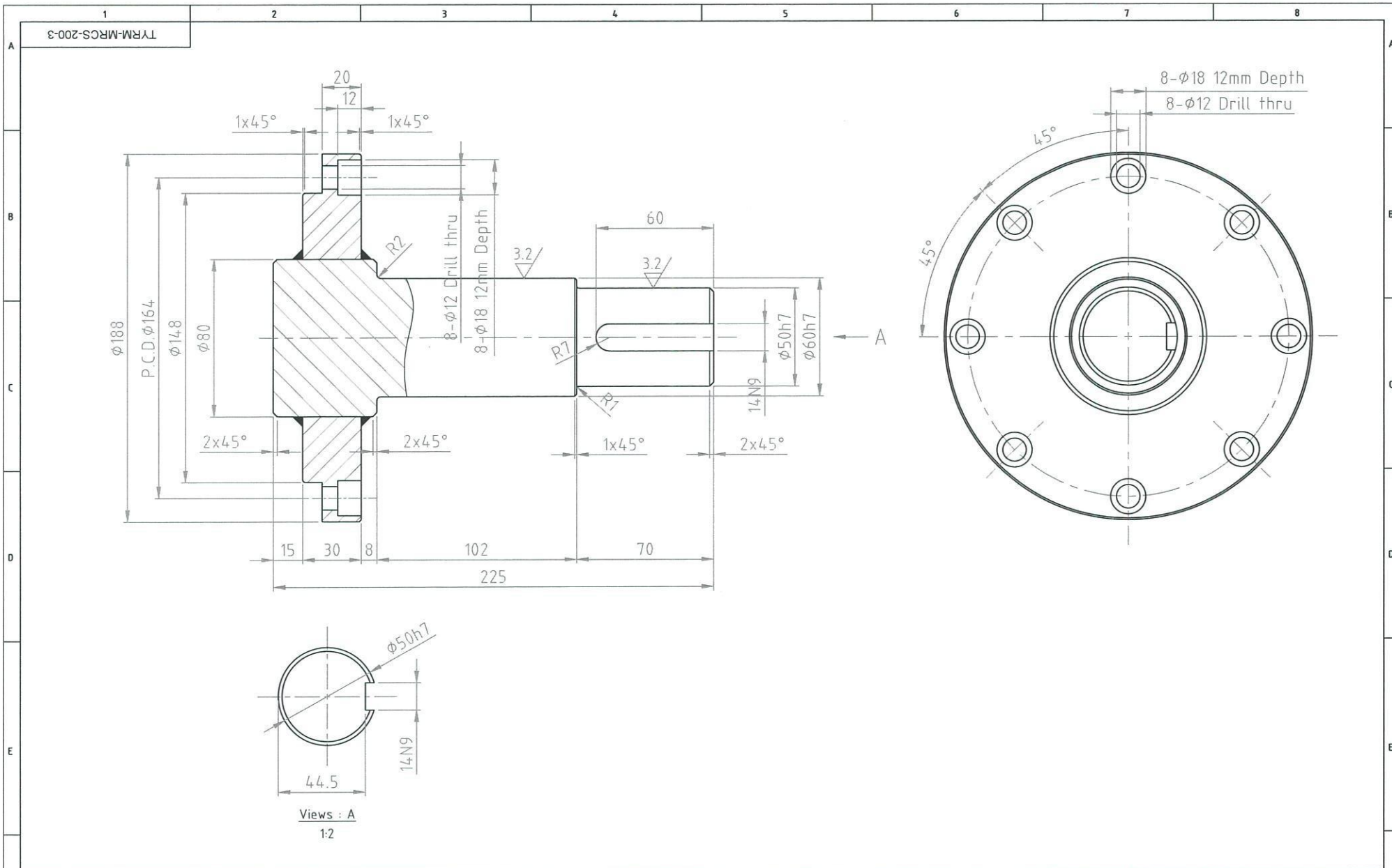
B

Views : A&B
1 : 2

DETAIL : Z
1 : 1.5

ROLLING MILL PLANT	TITLE	ROLLER	MATERIAL CODE	RMT26RCS2002	DRAWING - NO.		TYRM-MRCS-200-2		REVISE	0	TOTAL PAGE	1	WEIGHT / PC		
	MACHINE NAME	ROLLER AFTER COLD SHEAR	MATERIAL	FCD500	DRAW BY	MANA NAMSRI	DATE	5/02/2026	DATE :	QUANTITY	1	PC	PAGE NO.		96.669
	AREA	FINISHING LINE	HARDNESS	40±2 HRC	CHECK BY	MANA NAMSRI	DATE	5/02/2026	APPROVE BY	DATE	SCALE	1 : 1	3 / 4		UNIT

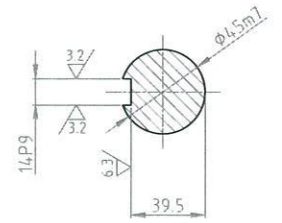
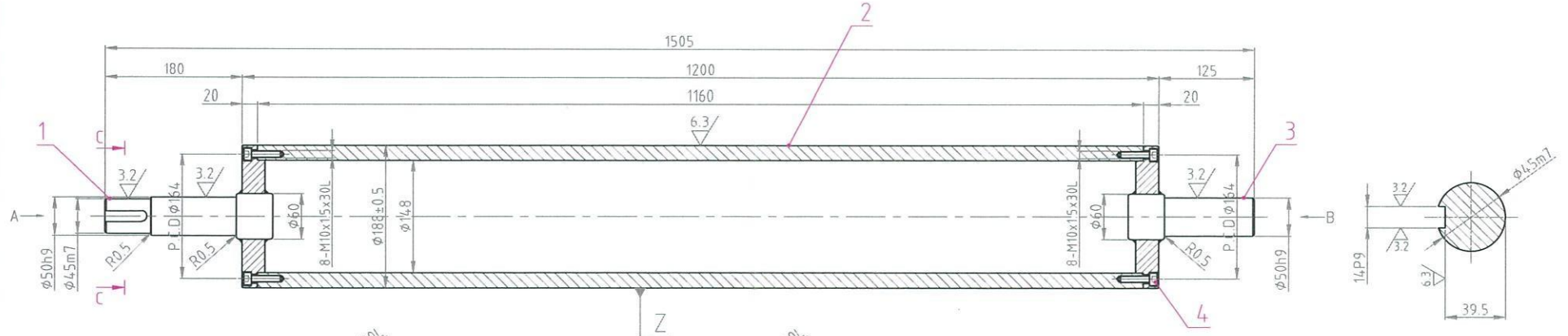
1-2



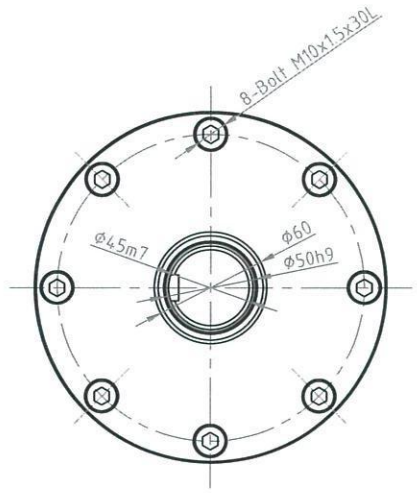
F	TITLE		MATERIAL CODE		DRAWING - NO.		REVISE	TOTAL PAGE	WEIGHT / PC				
	MACHINE NAME		MATERIAL		DRAW BY		DATE	QUANTITY	PC				
	AREA		HARDNESS		CHECK BY		DATE	SCALE	PAGE NO.				
ROLLING MILL PLANT		FINISHING LINE		38±2 HRC		APPROVE BY		DATE	1 : 1	4 / 4	11.254	UNIT	mm.

1.3

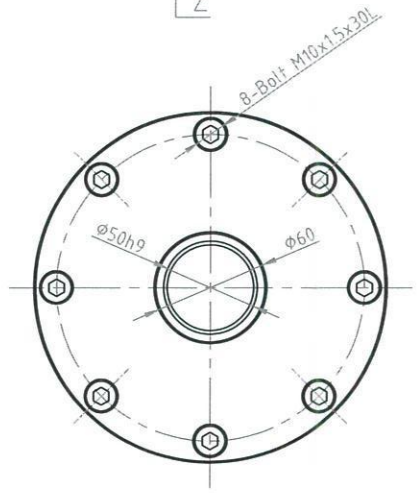
TYRM-MRCS-100



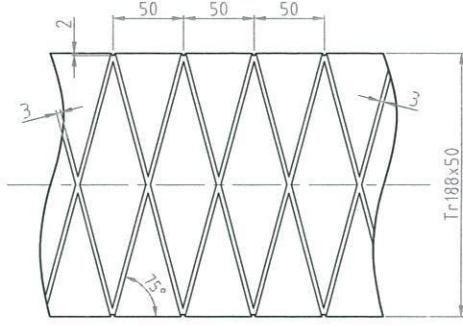
Section C-C
1 : 2



Views : A
1 : 2



Views : B
1 : 2



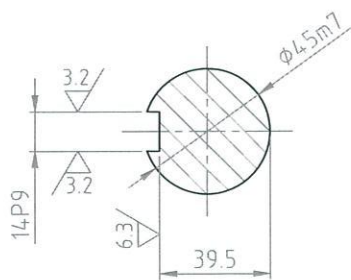
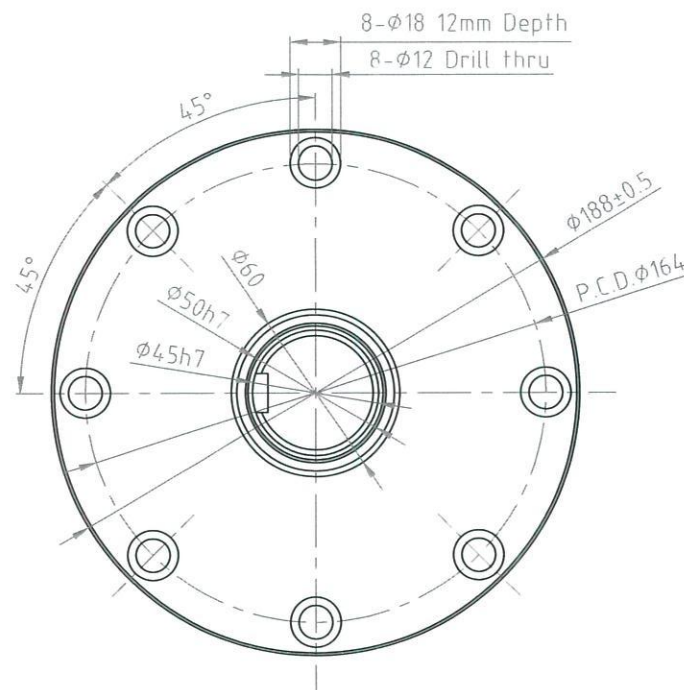
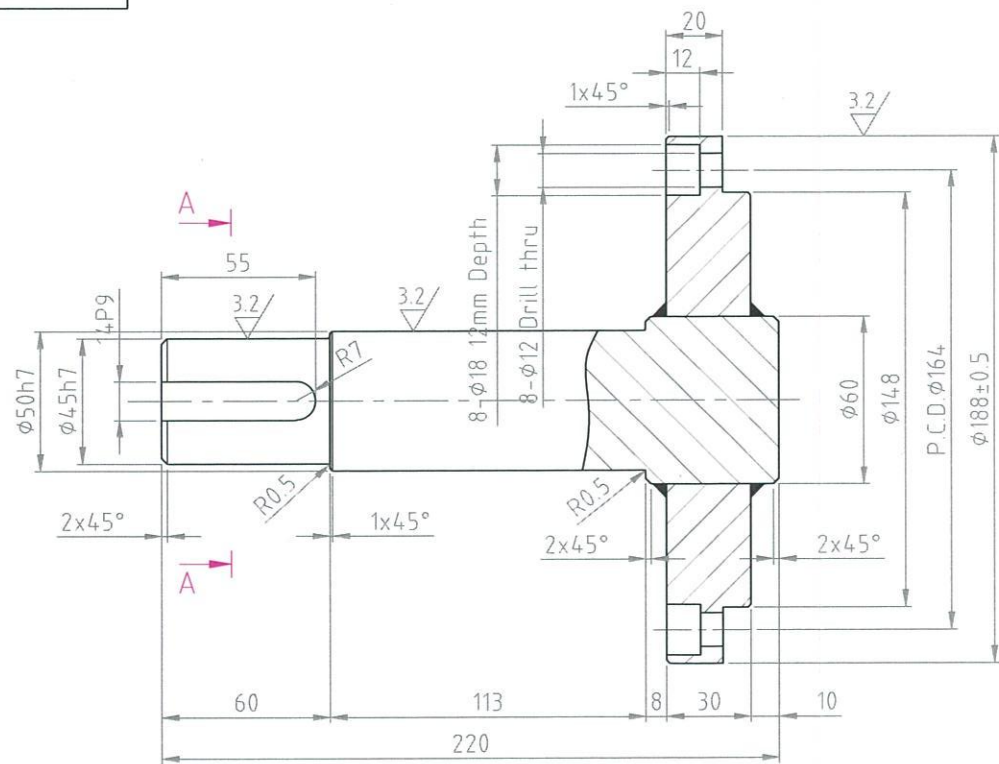
Detail : Z
Surface of roller
1 : 1.5

4	BOLT M10	8.8	16	-	L = 30 mm.
3	SHAFT 2	SCM440	1	2.884	TYRM-MRCS-100-3
2	ROLLER	FCD500	1	89.386	TYRM-MRCS-100-2
1	SHAFT 1	SCM440	1	3.54	TYRM-MRCS-100-1
No.	NAME	MATERIAL	QTY.	WEIGHT/PC (KG.)	ASSEMBLY DRAWING NO.

ROLLING MILL PLANT	TITLE	ROLLER BEFORE COLD SHEAR ASSEMBLY	MATERIAL CODE	RMT26RCS100	DRAWING - NO.	TYRM-MRCS-100		REVISE	0	TOTAL PAGE	1	WEIGHT / SET 95.81 KG.				
	MACHINE NAME	ROLLER BEFORE COLD SHEAR	MATERIAL	SCM440 / FCD500	DRAW BY	MANA NAMSRI	DATE	4/02/2026	DATE		QUANTITY			1		
	AREA	FINISHING LINE	HARDNESS	-	CHECK BY	MANA NAMSRI	DATE	4/02/2026	SCALE	1 : 1	SET			1 / 1	UNIT	mm.
					APPROVE BY		DATE									

Item 2

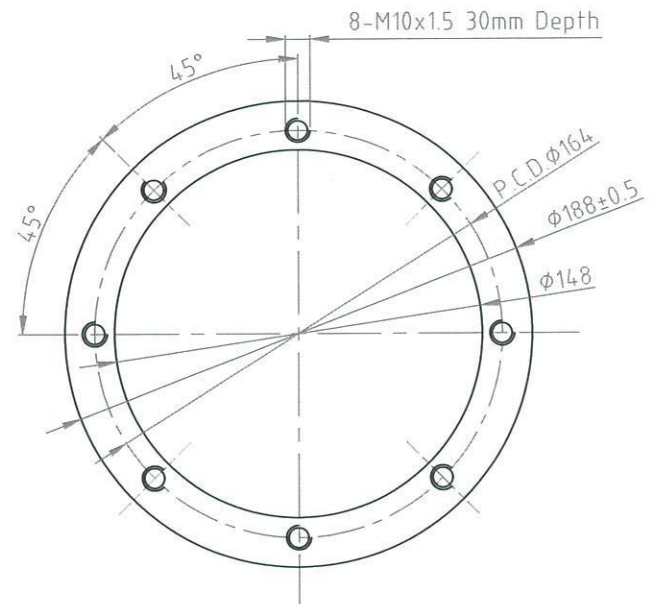
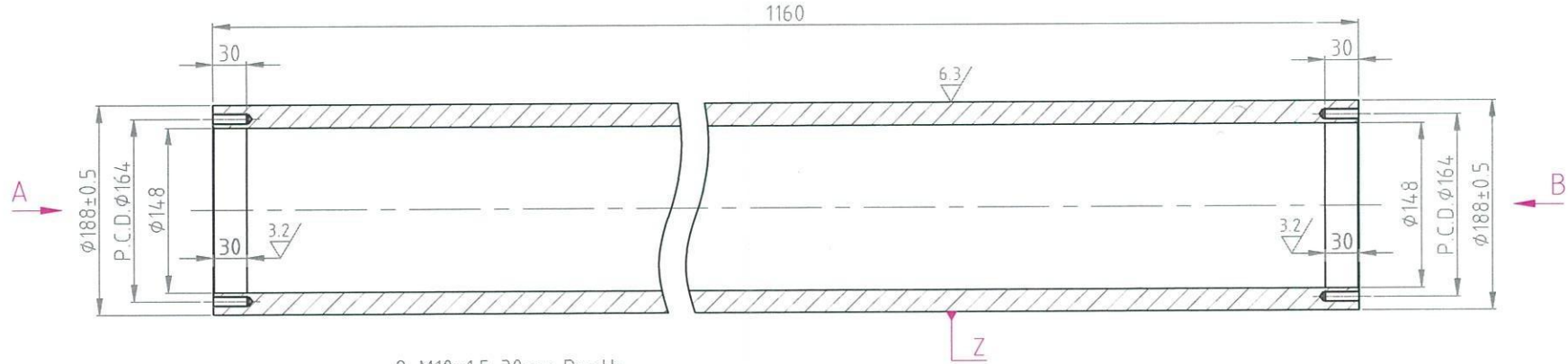
TYRM-MRCS-100-1



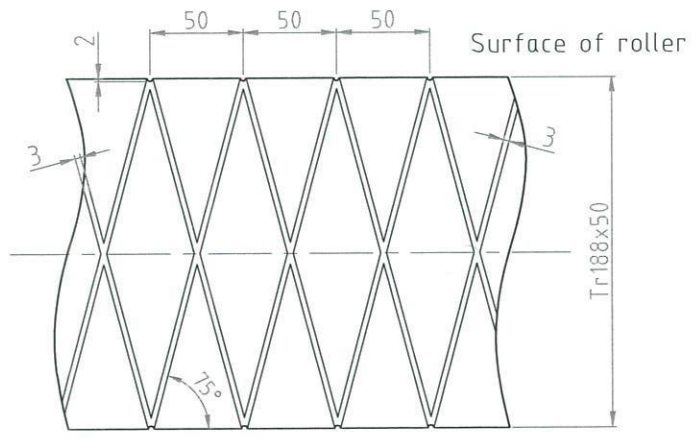
SECTION A-A

F	TITLE	SHAFT 1	MATERIAL CODE	RMT29RCS1001	DRAWING - NO.	TYRM-MRCS-100-1		REVISE	0	TOTAL PAGE	1	WEIGHT / PC	
	MACHINE NAME	ROLLER BEFORE COLD SHEAR	MATERIAL	SCM440	DRAW BY	MANA NAMSRI	DATE	5/02/2026	QUANTITY	1	PAGE NO.	3.54	
	AREA	FINISHING LINE	HARDNESS	38±2 HRC	CHECK BY	MANA NAMSRI	DATE	5/02/2026	SCALE	1 : 1	1 / 1		
ROLLING MILL PLANT					APPROVE BY		DATE					KG.	

TYRM-MRCS-100-2

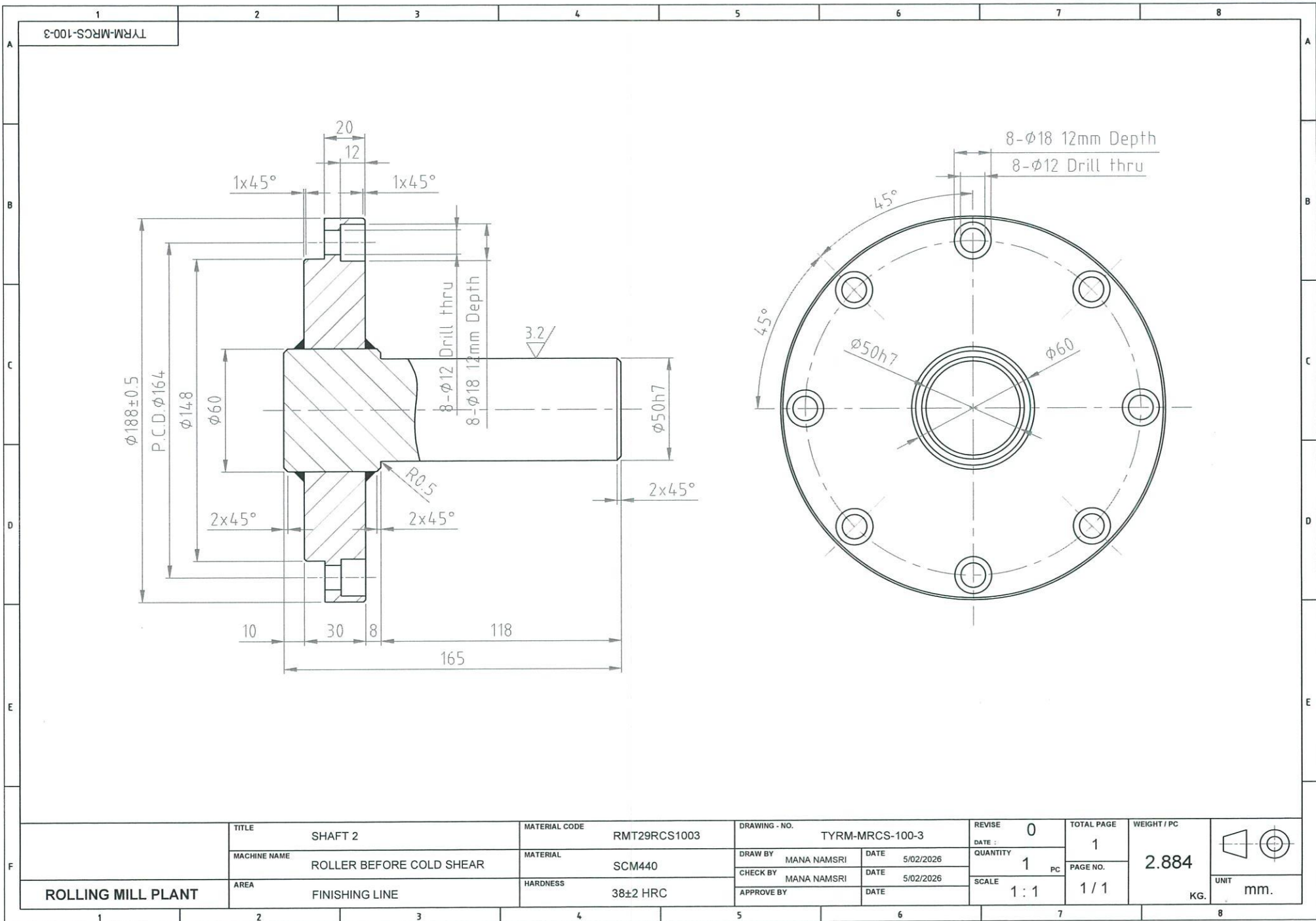


Views : A&B
1 : 2



DETAIL : Z
1 : 1.5

ROLLING MILL PLANT	TITLE	ROLLER	MATERIAL CODE	RMT26RCS1002	DRAWING - NO.	TYRM-MRCS-100-2	REVISE	0	TOTAL PAGE	1	WEIGHT / PC		
	MACHINE NAME	ROLLER BEFORE COLD SHEAR	MATERIAL	FCD500	DRAW BY	MANA NAMSRI	DATE	5/02/2026	QUANTITY	1 PC	PAGE NO.		89.386
	AREA	FINISHING LINE	HARDNESS	40±2 HRC	CHECK BY	MANA NAMSRI	DATE	5/02/2026	SCALE	1 : 1	1 / 1		UNIT



ROLLING MILL PLANT	TITLE	SHAFT 2	MATERIAL CODE	RMT29RCS1003	DRAWING - NO.	TYRM-MRCS-100-3		REVISE	0	TOTAL PAGE	1	WEIGHT / PC		
	MACHINE NAME	ROLLER BEFORE COLD SHEAR	MATERIAL	SCM440	DRAW BY	MANA NAMSRI	DATE	5/02/2026	QUANTITY	1	PC	PAGE NO.		2.884
	AREA	FINISHING LINE	HARDNESS	38±2 HRC	CHECK BY	MANA NAMSRI	DATE	5/02/2026	SCALE	1:1	1/1	UNIT		mm.
					APPROVE BY		DATE					KG.		

2-3

