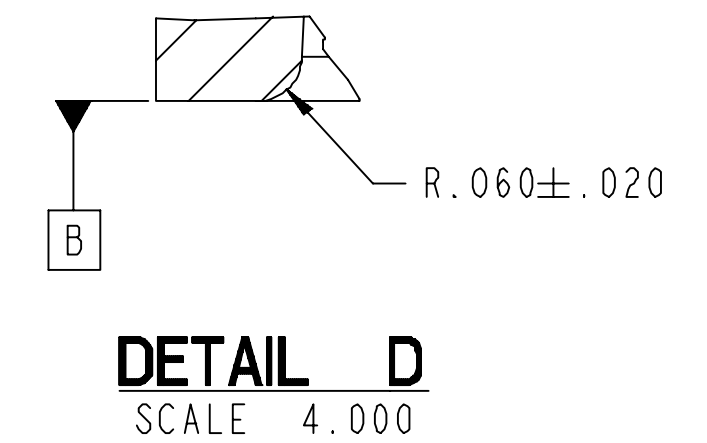
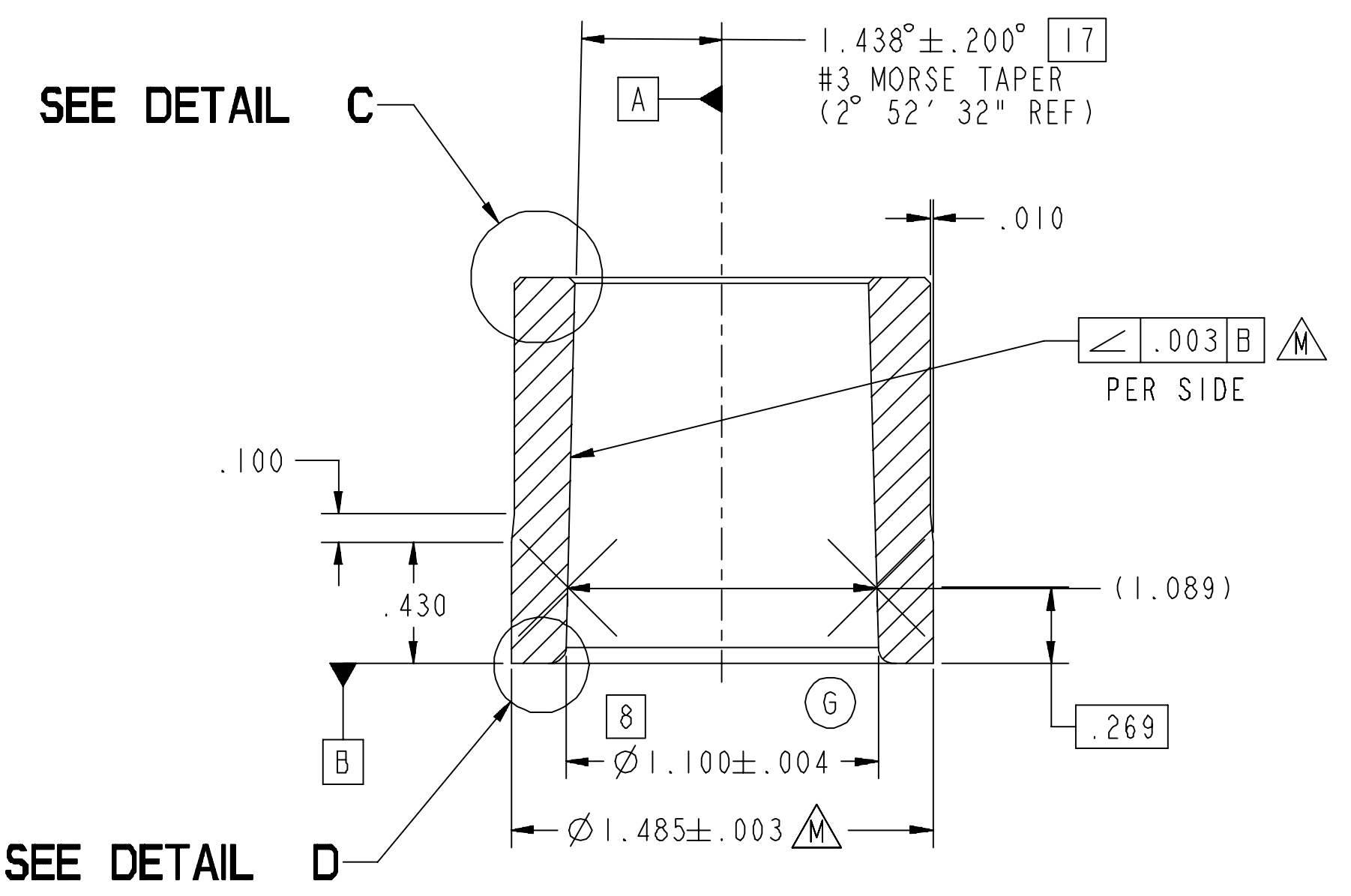
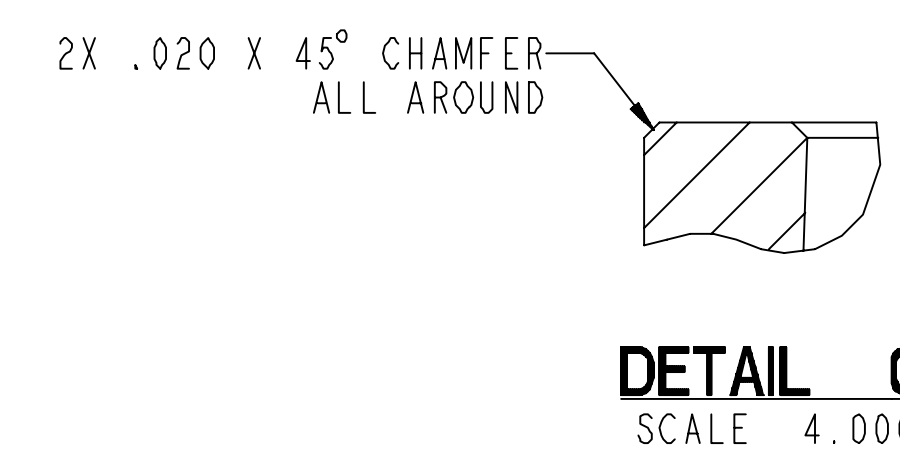
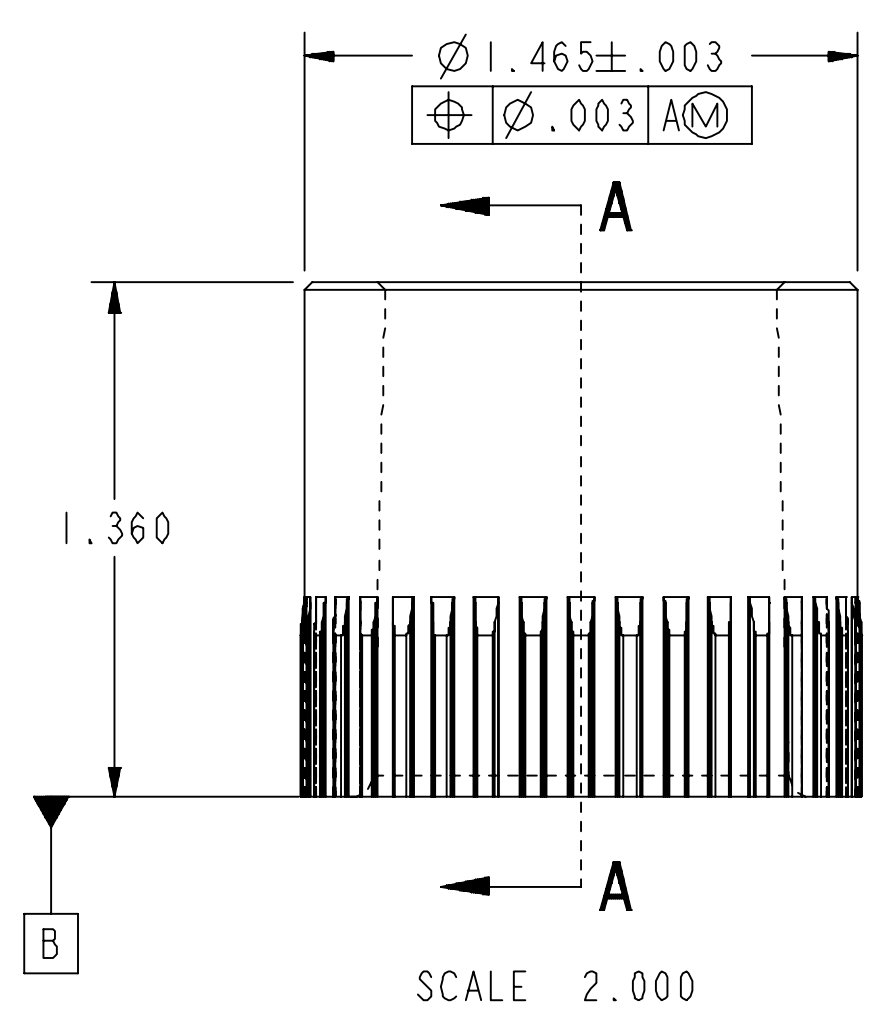
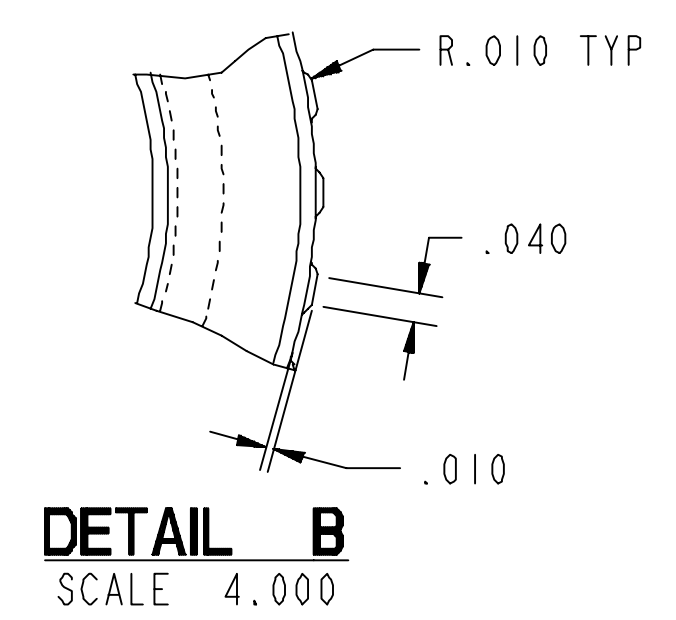
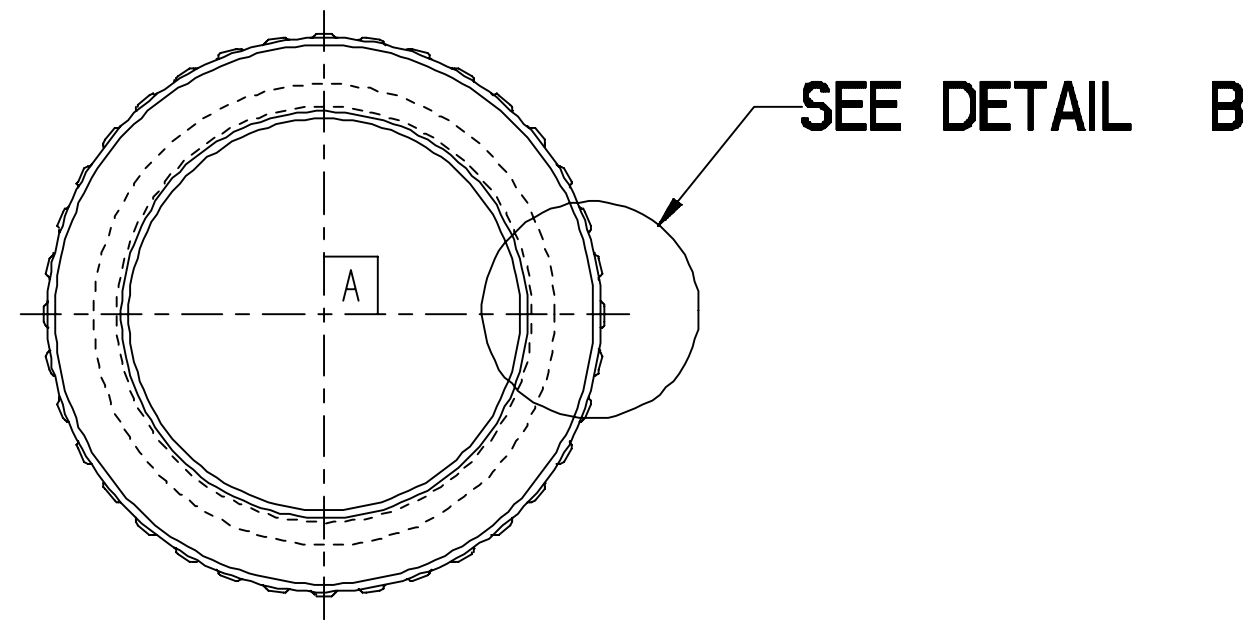
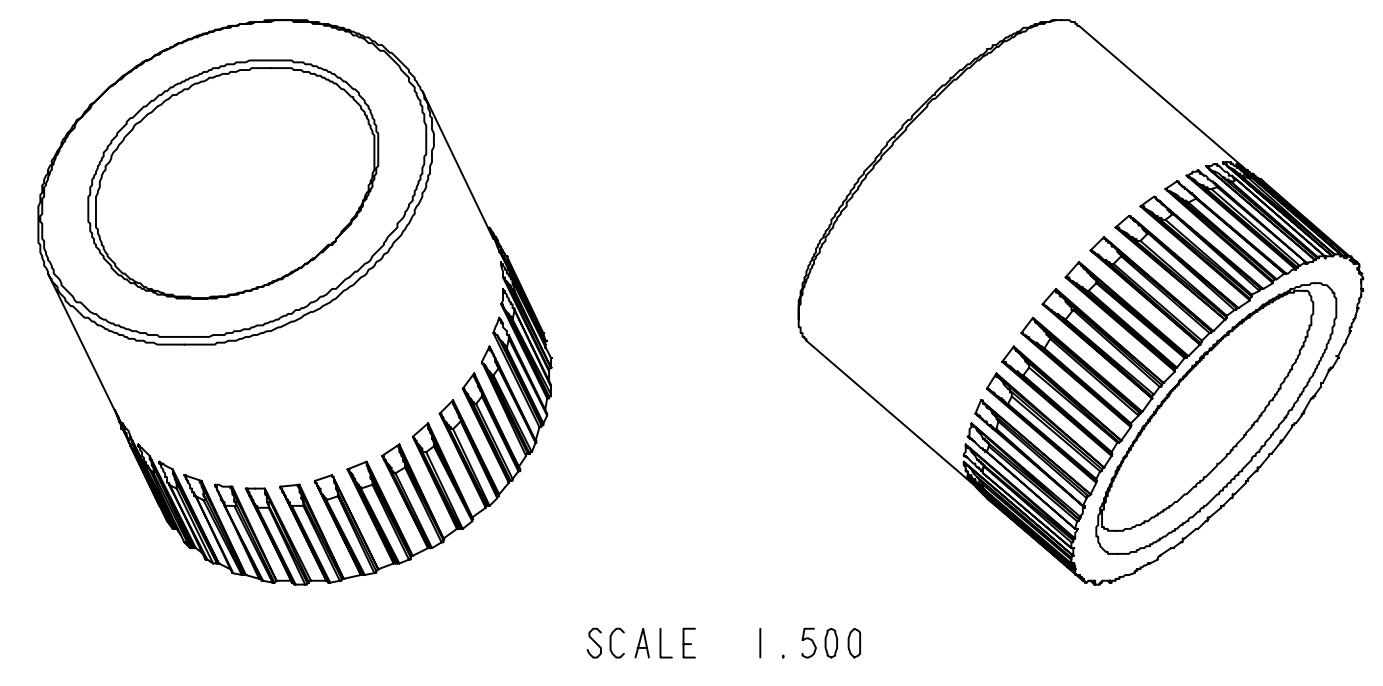


PART NUMBER	REV	U/M	DESCRIPTION	VOLUME IN ³	WT.-LB
10440701	G	PC	ADAPTOR, CYLINDER, PNEU	1.078	0.305
10440702	G	PC	ADAPTOR, CYLINDER, PNEU, RESTRIKE	1.078	0.305

REVISIONS			
REV	DESCRIPTION	CHGD/ENGR	DATE
E	REMOVED LINCOLN FROM TABLE. ADDED BRUCE TO TABLE AND PN 1044-0701. PROD RELEASE PER ECO 207-178-B	KP/TD	15 MAR 2005
F	INCORPORATED XF REV SERIES PRODUCTION RELEASE PER ECO 332-032-C.	KP/TD	26 MAY 2008
G	Ø TOLERANCE WAS ±.010 UPDATED TO MATCH WELDMENT ADDED P/NO 1044-0702 & NOTE 8	WAHLFIELD	12 JAN 2011



SECTION A-A



- NOTES:
- 1 MATERIAL: POWDERED METAL FN-0208-35 (TO BE WELDED), MATERIAL CERTIFICATION REQUIRED. MINIMUM HARDNESS=65 HRB. MINIMUM TENSILE STRENGTH=35 KSI. DENSITY=.248 LBS/CU. IN.
 - 2. 3D DATA ON FILE IN HAWORTH PART DATABASE UNDER 10440701.pr1
 - 3. PACKAGE PER HAWORTH PACKAGING STANDARD ES-1092.
 - 4. INTERPRET ALL GEOMETRIC DIMENSIONING AND TOLERANCING PER ANSI Y14.5M-1982.
 - 5. DIMENSIONS AND NOTES MARKED WITH Δ ARE CRITICAL AND MUST MEET ES-1145.
 - 6 NO BURRS, CRACKING, POROSITY, OR SURFACE IMPERFECTIONS ALLOWED.
 - 7 PLUG GAGE TO BE DEVELOPED BASED ON SUPPLIER INPUT.
 - 8 TOLERANCE FOR Ø 1.100 TO BE ±.010, P/NO 1044-0702 ONLY. (G)

ITEM		DESCRIPTION		U/M
LIST OF MATERIALS				
MATERIAL	SEE NOTES	DIMENSIONS (INCH METRIC)	HAWORTH [®]	
FINISH	SEE NOTES	TOLERANCES EXCEPT AS NOTED: .xxx = ±.010 [.253] .xx = ±.03 [.76] ANGLES = ±2°	DRAWING TITLE ADAPTOR, CYLINDER, PNEUMATIC, SIT 10	
HAWORTH INC. CLAIMS PROPRIETARY RIGHTS TO THE MATERIAL DISCLOSED HEREON. THIS DRAWING AND/OR TECHNICAL INFORMATION IS THE PROPERTY OF HAWORTH INC. AND IS ISSUED IN CONFIDENCE FOR USE ONLY AS AUTHORIZED, AND MAY NOT BE REPRODUCED OR DESCRIBED OR SHOWN TO OTHERS WITHOUT WRITTEN PERMISSION FROM HAWORTH INC.		SIZE	DRAWING NUMBER	REVISION
		D	10440700	G
SCALE 1.000		1 OF 1		