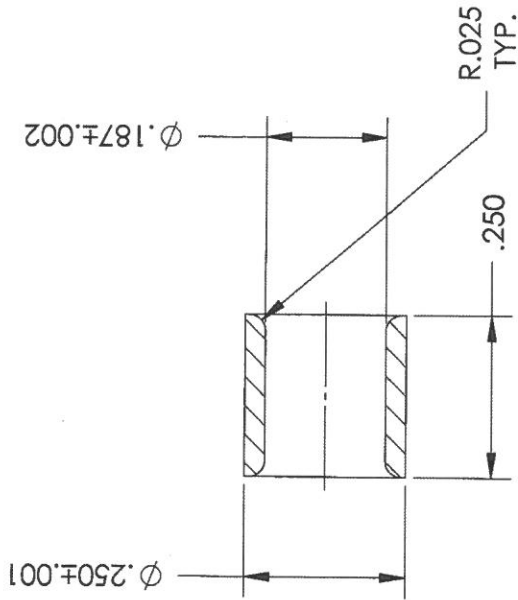
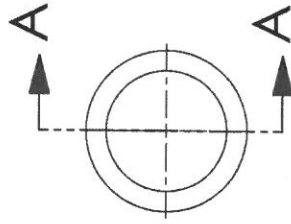


REV.	DESCRIPTION	BY	DATE
(A)	CONVERTED FROM AutoCAD	H ZHAO	10/27/2006



SECTION A-A



303

650

TORONTO, CANADA

DRAWN BY: H ZHAO

APPROVED BY:

SCALE: 4:1

DATE: 12/02/15

TITLE: FRV COUPLING
PLUNGER SLEEVE

TOLERANCES UNLESS OTHERWISE SPECIFIED
FRACTIONAL $\pm 1/64$
XX DECIMAL $\pm .01$
XXX DECIMAL $\pm .005$
ANGULAR $\pm 1/2$

BREAK ALL SHARP CORNERS

TOLERANCES FOR LOCATING HOLES
 $\phi \pm .001$
 $\phi \pm .002$

MAT'L: 303

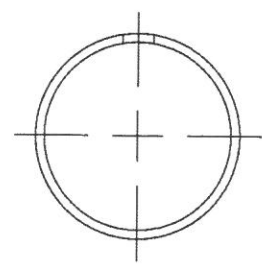
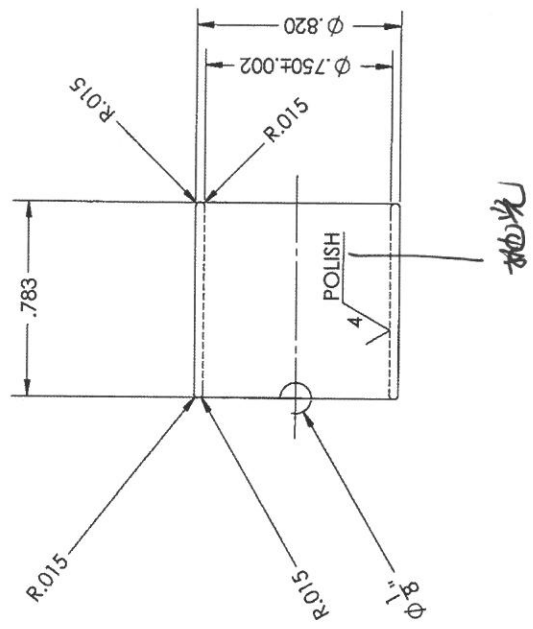
DWG. NO. 27922

87

MATERIAL: 316 SS

HARDNESS:

FINISH:

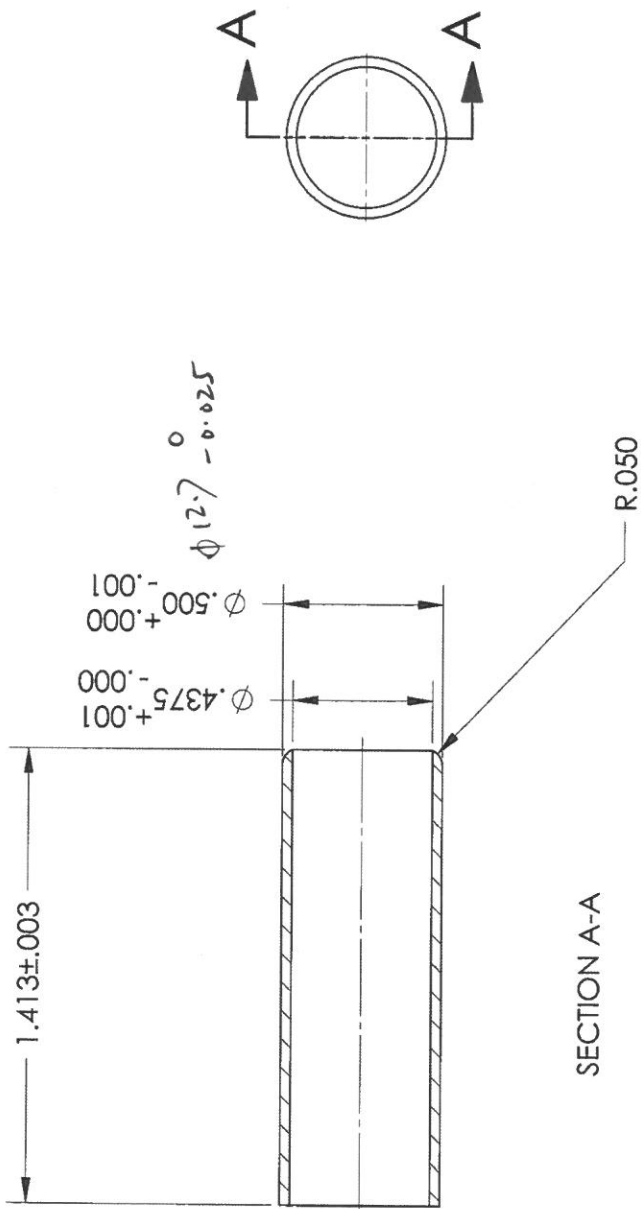


316

COMMERCIAL CONFIDENTIAL DO NOT COPY		REV.	BY	DATE	DESCRIPTION
ALL DIMENSIONS ARE IN		TUBE			
IN		REFERENCE NO.			
B. RESCHKE		DESIGNER			
H. ZHAO		DRAWING NUMBER			
239904		DATE			
10/31/11		1 OF 1			
3RD ANGLE PROJECTION		SCALE			
2:1		SHEET			
1		OF 1			
B. RESCHKE		DESIGNER			
H. ZHAO		DRAWING NUMBER			
239904		DATE			
10/31/11		1 OF 1			
3RD ANGLE PROJECTION		SCALE			
2:1		SHEET			
1		OF 1			

84

MATERIAL:	303 SS
HARDNESS:	
FINISH:	CHROME SHAFT 镀铬



COMMERCIAL CONFIDENTIAL DO NOT COPY		REV. BY DATE		DESCRIPTION	
ALL DIMENSIONS ARE IN:		PART NAME SLEEVE		DRAWING NUMBER	
IN		REFERENCE NO.		DESIGNER: H. ZHAO	
BROKE ALL SHARP EDGES		APPROVED BY:		DWG. SIZE A	
FRACTION ± 1/16		SCALE: 2:1		SHEET: 1 OF 1	
.0 ± .030		DATE: 12/19/12		DRAWING NUMBER: 176267	
.00 ± .010					
SURFACE FINISH:					
MILLING 32/					
TURNING 16/					

21

MATERIAL	416 SS
HARDNESS	
FINISH	DYNALLOY

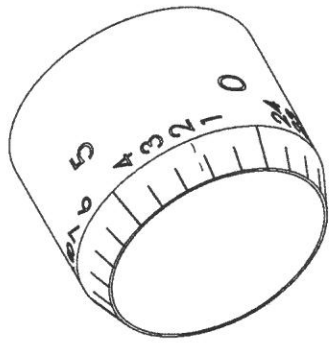
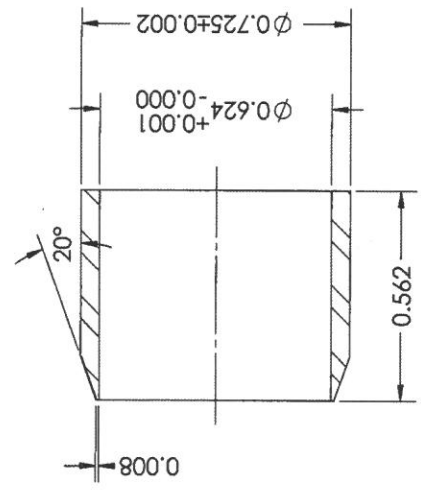
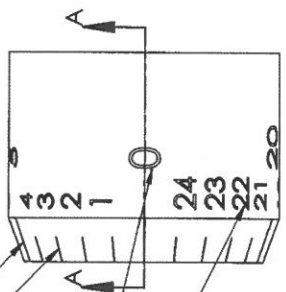
Handwritten signature

MIC. MARK LENGTH=0.122

MIC. MARK LENGTH=0.07

TEXT HEIGHT=0.08

TEXT HEIGHT=0.06



刷子不做
表面处理不做

1013

675

SECTION A-A

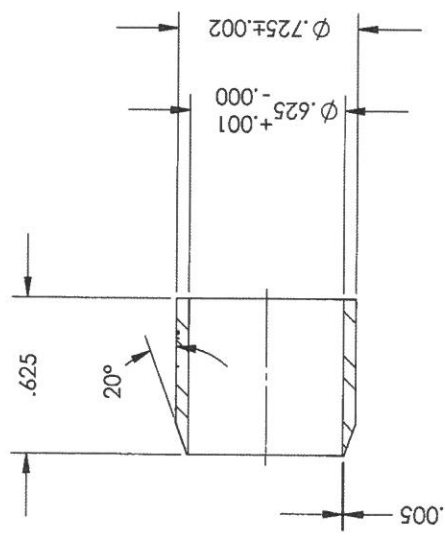
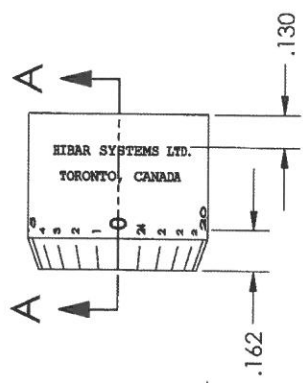
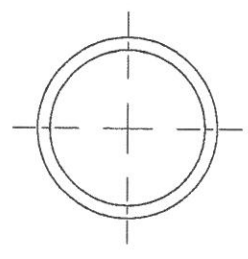
COMMERCIAL CONFIDENTIAL DO NOT COPY		PART NAME MICROMETER SLEEVE FT1	
ALL DIMENSIONS ARE IN IN		SURFACE FINISH MILLING 32/ TURNING 16	
BREAK ALL SHARP EDGES FRACTION ± 1/16 ANGLES ± 15° .0 ± .003 .000 ± .005 .00 ± .010 .000 ± .010		APPROVED BY: B. RESCHKE DESIGNER: B. CHAN SCALE: 3:1 SHEET: 1 OF 1	
DATE: 10/29/03		DRAWING NUMBER: 147542	

REV.	BY	DATE	DESCRIPTION
B	C.C.	10/09/15	UPDATED DWG & MICROMETER MARK DIMS

38

VERSION: 12/2/2015 4:46:11 PM LOCATION: M:\DWG\ISS\PROJECTS\9-P\0286 - 4H PUMP\5\4H DETAILS\25473.SLDRAW

REV.	DESCRIPTION	BY	DATE
(A)	REDRAWN AUTOCAD	NY	08/18/94
(B)	ADDED DYNALLOY	NY	06/30/06
(C)	CONVERTED FROM AutoCAD	H ZHAO	11/16/06



銅子不做
镀铬

NOTE: CHROME PLATE .0002/.0003 THK

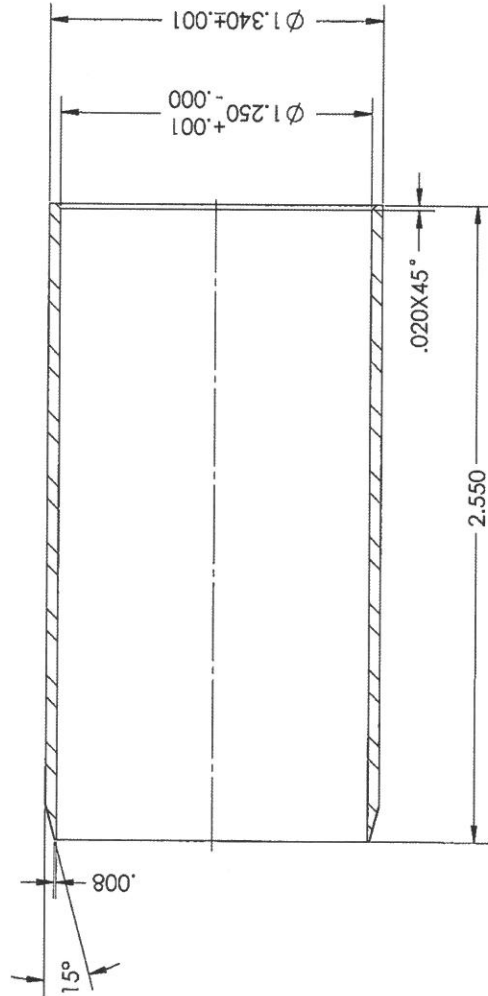
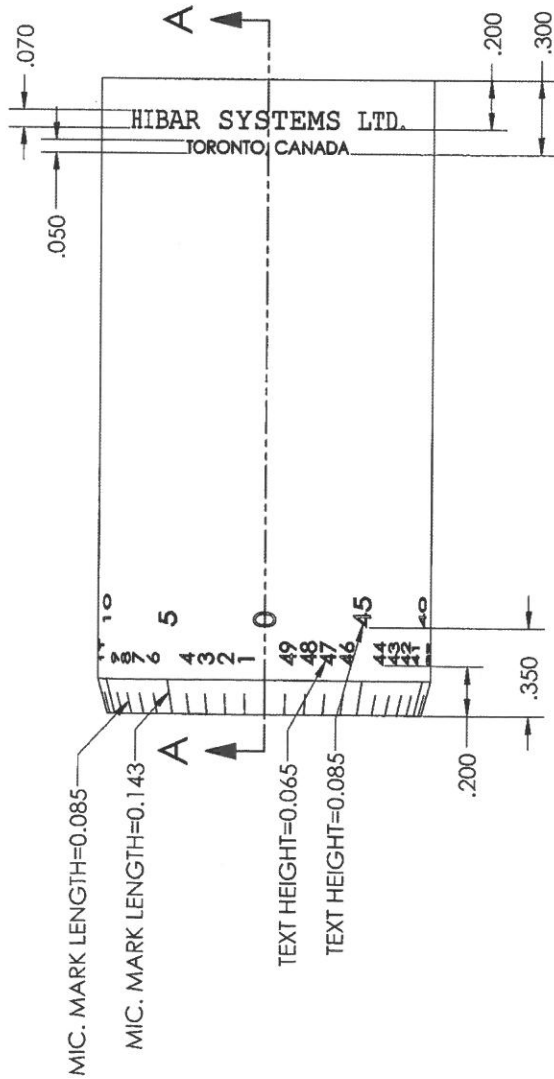
1700

TOLERANCES FOR
LOCATING HOLES
◆ ± .001
⊕ ± .002

TOLERANCES UNLESS
OTHERWISE SPECIFIED
FRACTIONAL ±1/64
XX DECIMAL ±.01
XXX DECIMAL ±.005
ANGULAR ±1/2
BREAK ALL SHARP
CORNERS


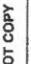
SCALE:	2:1	DRAWN BY:	H ZHAO
DATE:	6/16/2016	APPROVED BY:	
TITLE:	MIC SLEEVE SPEED BLOCK		
MAT'L:	416 SS DYNALLOY	DWG. NO.	25473_Engraving

MATERIAL: 416 SS
HARDNESS:
FINISH: DYNALLOY



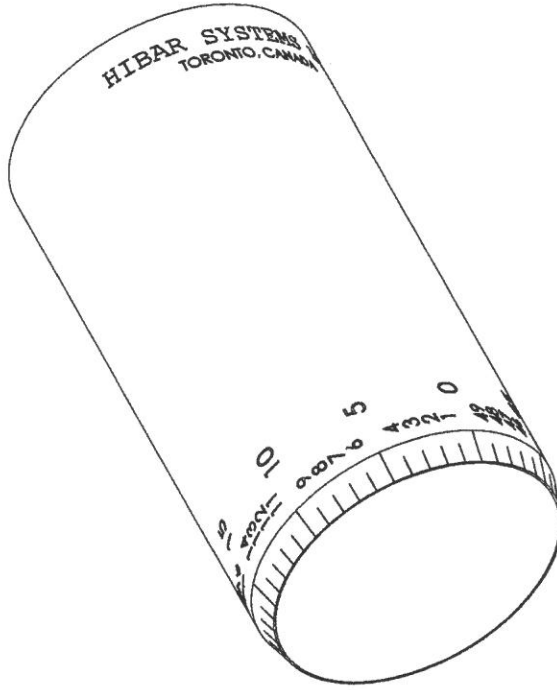
SECTION A-A

REV.	BY	DATE	DESCRIPTION
C	C.C.	10/05/15	UPDATED DWG & MICROMETER MARK DIMS

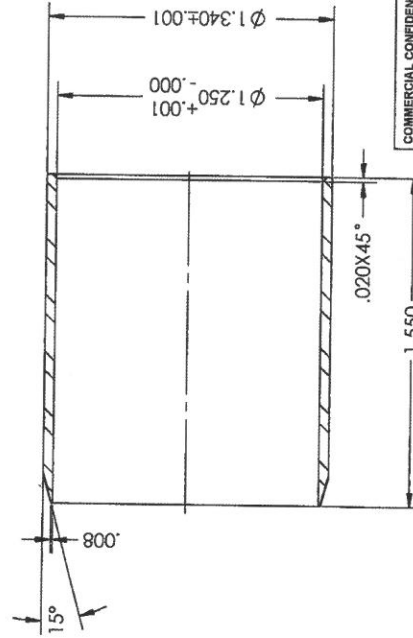
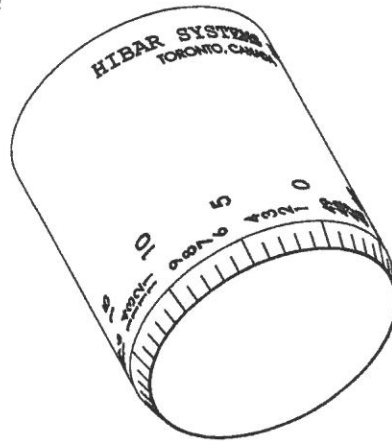
COMMERCIAL CONFIDENTIAL DO NOT COPY		 SWIFT NAME MICROMETER SLEEVE F2		REFERENCE NO. 		DESIGNER H. ZHAO		REVISION C	
ALL DIMENSIONS ARE IN: IN		SURFACE FINISH: MILLING $\frac{32}{\sqrt{}}$ TURNING $\frac{16}{\sqrt{}}$		APPROVED BY: 		SCALE: $\frac{DWS}{DMS}$ 2:1		DRAWING NUMBER 	
BREAK ALL SHARP EDGES FLAT $\pm .010$.000 $\pm .005$.00 $\pm .010$				CHK.DBT: 		SHEET: B		DATE: 10/25/06	
		3RD ANGLE PROJECTION						10098	

利己不做
表面处理不做

460



REV.	BY	DATE	DESCRIPTION
D	C.C.	10/05/15	UPDATED DWG'S & MICROMETER MARK LIMS



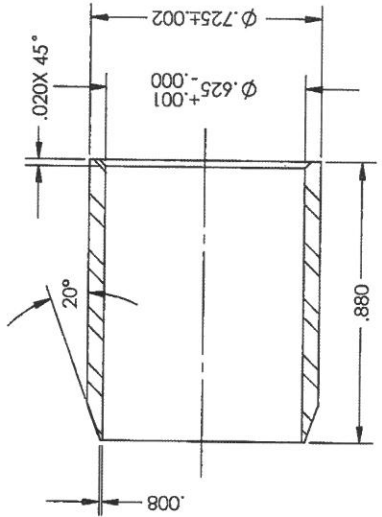
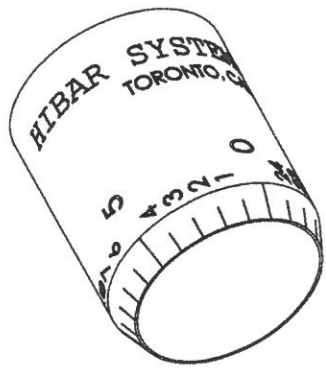
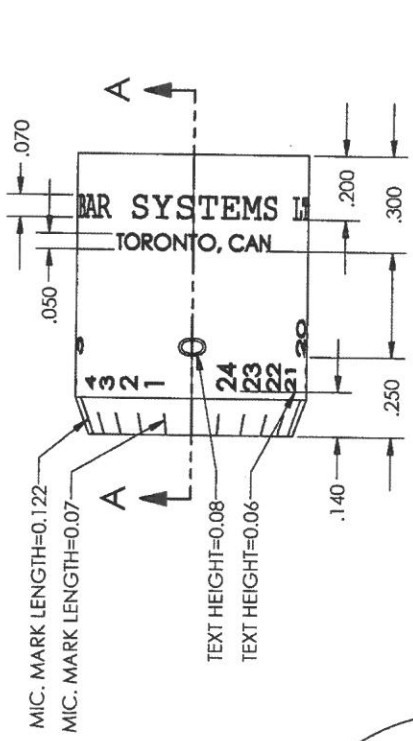
COMMERCIAL CONFIDENTIAL DO NOT COPY

ALL DIMENSIONS ARE IN IN		SURFACE FINISH MILLING $\frac{32}{\sqrt{16}}$ TURNING $\frac{32}{\sqrt{16}}$		MICROMETER SLEEVE F1		REFERENCE NO. _____ DESIGNER H. ZHAO CHECKED BY _____ APPROVED BY _____		REVISION D H. ZHAO	
BREAK ALL SHARP EDGES FRACTION ± 0.005 ANGLES $\pm 0.5^\circ$.00 $\pm .000$.0005 $\pm .005$.00 $\pm .000$.0000 $\pm .0010$						SCALE 2:1		DWG NO. B DATE 10/25/06 1 OF 1	
DRAWING NUMBER 10097									

利益不做
素面处理不做

7

MATERIAL	416 SS
FINISH	DYNALLOY



SECTION A-A

尺寸不做
表面处理不做

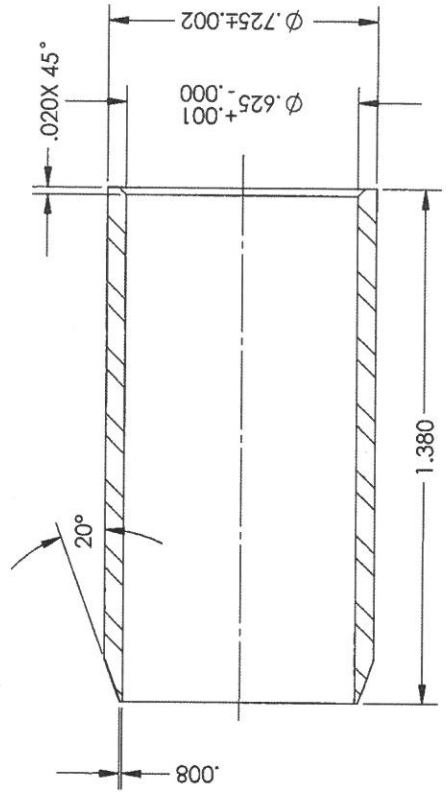
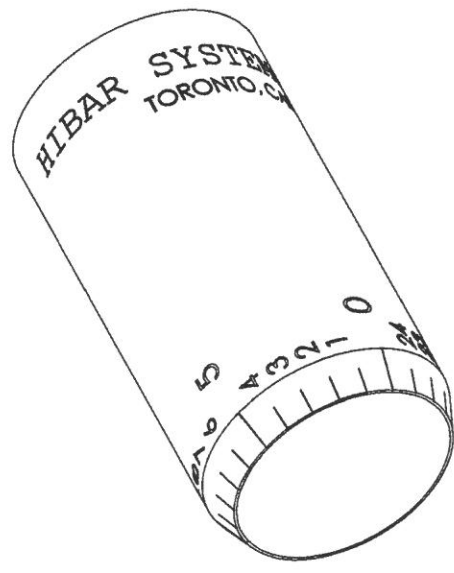
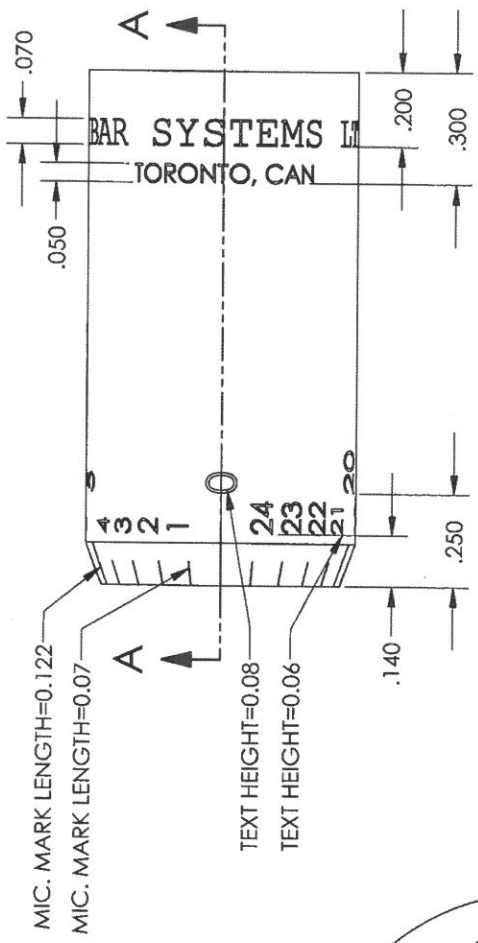
400

COMMERCIAL CONFIDENTIAL DO NOT COPY	
ALL DIMENSIONS ARE IN	IN
BREAK ALL SHARP EDGES	FRACTION + 1/16 ANGLES 1/8"
8 ± .003	200 ± .005
10 ± .003	200 ± .005
12 ± .003	200 ± .005
SURFACE FINISH: MILLING <input checked="" type="checkbox"/> TURNING <input checked="" type="checkbox"/>	
MICROMETER SLEEVE 1B	
DESIGNED BY	B. RESCHKE
CHECKED BY	H. ZHAO
DATE	10/06/15
DRAWN BY	B
SCALE	3:1
SHEET	1 OF 1
PROJECT NUMBER	10059

REV.	BY	DATE	DESCRIPTION
C	C.C.	10/06/15	UPDATED DWG & MICROMETER MARK DMS

8

MATERIAL: 416 SS
HARDNESS:
FINISH: DYNALLOY



初子不做
表面处理不做

SECTION A-A

1200

COMMERCIAL CONFIDENTIAL DO NOT COPY		DRAWING: MICROMETER SLEEVE 2B	
ALL DIMENSIONS ARE IN IN		REFERENCE NO.	
SURFACE FINISH: MILLING 32 TURNING 15		DESIGNER: B. CHAN	
B. RESCHKE		DRAWING NUMBER: 10060	
APPROVED BY:		SCALE: 3:1	
CHG. BY:		DATE: 03/22/06	
FRACTION ±.016 ANGLES ±.05°		SHEET: 1 OF 1	
.0 ±.030			
.000 ±.005			
.000 ±.010			
3RD ANGLE PROJECTION			

REV.	BY	DATE	DESCRIPTION
C	C.C.	10/09/15	UPDATED DWG & MICROMETER MARK DIMS