

SPECIFICATIONS OF LEAD GLASS WINDOW

(A) LEAD GLASS WINDOW DATA

Sr. No	Description	Data
01	Window Type	Dry Lead Glass
03	Hot cell dimensions	1500x1200x1600 mm (L x W x H)
04	Wall thickness of cell	250 mm Lead of density 11.1g/cm ³
05	Lead glass	Density 5.2 g/cm ³
06	Radiation resistant glass on hot side	Density 3.3 g/cm ³
07	Safety glass on cold side	Density 2.5 g/cm ³
08	Refractive Index	1.8
09	Average distance from source to hot side of window	600 mm
14	Chemicals inside cell	Fumes of Dilute Sulphuric Acid , Concentrated Nitric Acid.
15	Temperature Range inside cell	15-25 C ⁰
16	Negative Pressure inside cell	250-500 Pascal
17	Relative Humidity inside cell	45-60%
18	Leakage Rate	Whole window assembly Leake Proof with no Radiation Streaming.
19	Lead Equivalence	250 mm Lead(Pb)
20	Window clear view	500mm x 400mm (Horizontal x Vertical)
21	Design life	30 Year
22	Duty cycle	Continuous
23	Lead Glass Window Frame	Drawing attached (Annexure "C")
24	Hot side trim frame assembly required	Yes
25	Frame material	Stainless steel
26	Code and Standard	ASTM 1572 - 04

(12)

P. 3/6

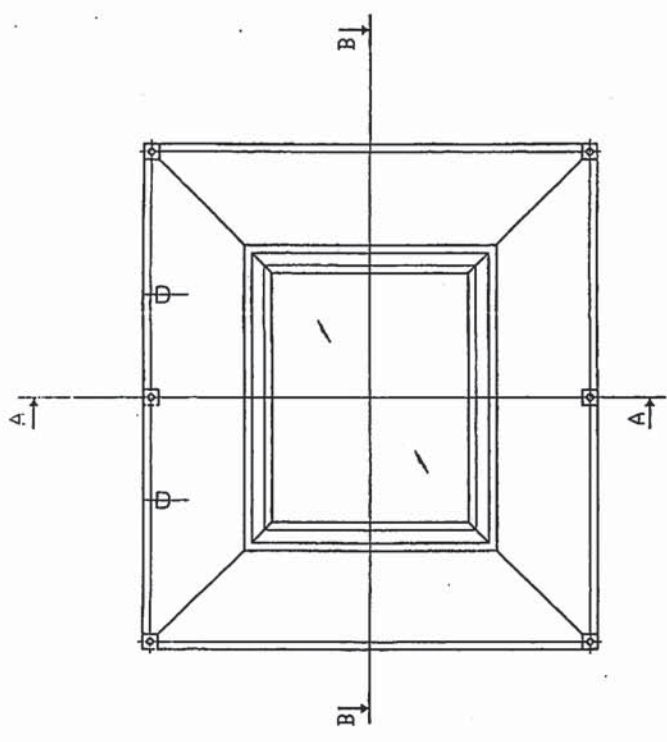
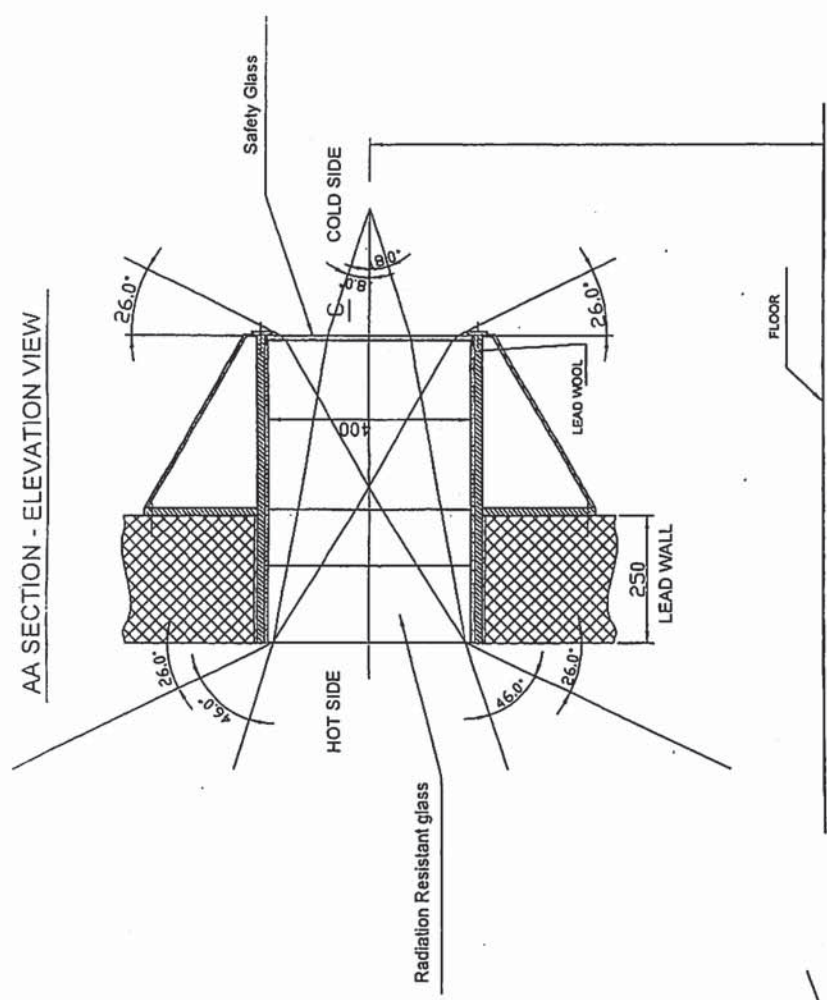
(B) TERMS AND CONDITIONS

- 1) Lead Glass shall comply with wall thickness regarding shielding.
- 2) Glasses provided shall be free of bubbles, inclusions and there shall not be any visual defects in the central viewing area.
- 3) Glass surfaces shall be anti- reflective treated to meet light transmission requirement.
- 4) Cerium –stabilized glass shall be utilized to eliminate browning.
- 5) Lead wool may be used inside a window assembly housing to fill void between the edges of glass slabs and window housing to eliminate radiation path.
- 6) It is important that Window frame shall be of a single step and shall be constructed of stainless steel.
- 7) Detail drawing of frame shall be prepared by manufacturer and submitted to client for approval.
- 8) Manufacturer shall prepare manufacturing plan, inspection plan, test plan, acceptance test procedure, quality assurance procedure and shipping procedure.
- 9) Manufacturer shall provide material safety data sheet (MSDS) and certified material test report (CMTR), that certifies the results of tests performed on the item provided.

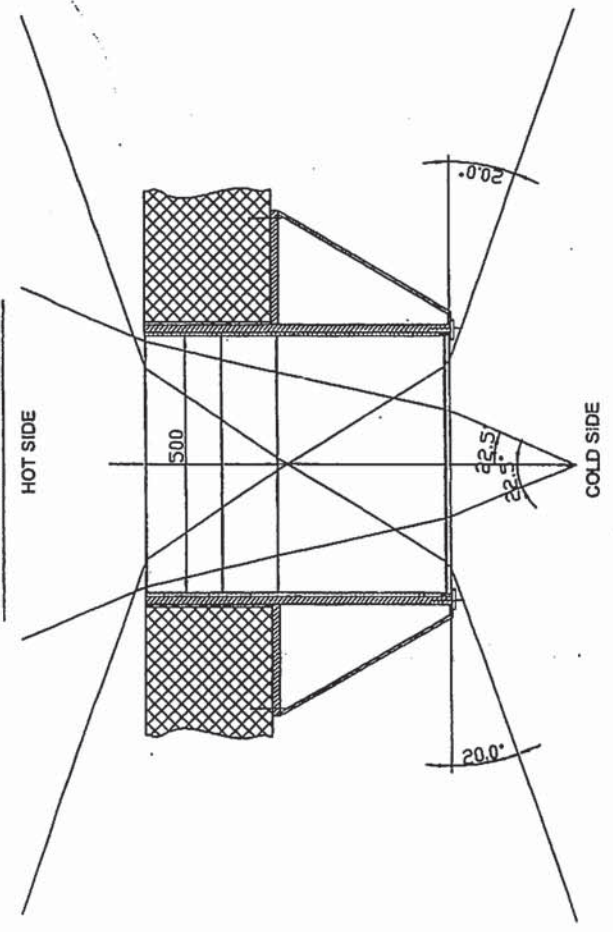
(C) TESTING AND INSPECTION

- 1) All testing certification will be the responsibility of the manufacturer, especially the lead equivalence certificate.
- 2) Wall liner/window frame shall pass a leak test.
- 3) Each glass slab shall be inspected visually for cracks, bubbles, dimensions and density.
- 4) Light transmission of each glass slabs shall be inspected.
- 5) After installing the glasses, the whole window assembly shall pass a test for over all leak.
- 6) Inspection shall be carried out by owner's personals at manufacturer's site.

AA SECTION - ELEVATION VIEW

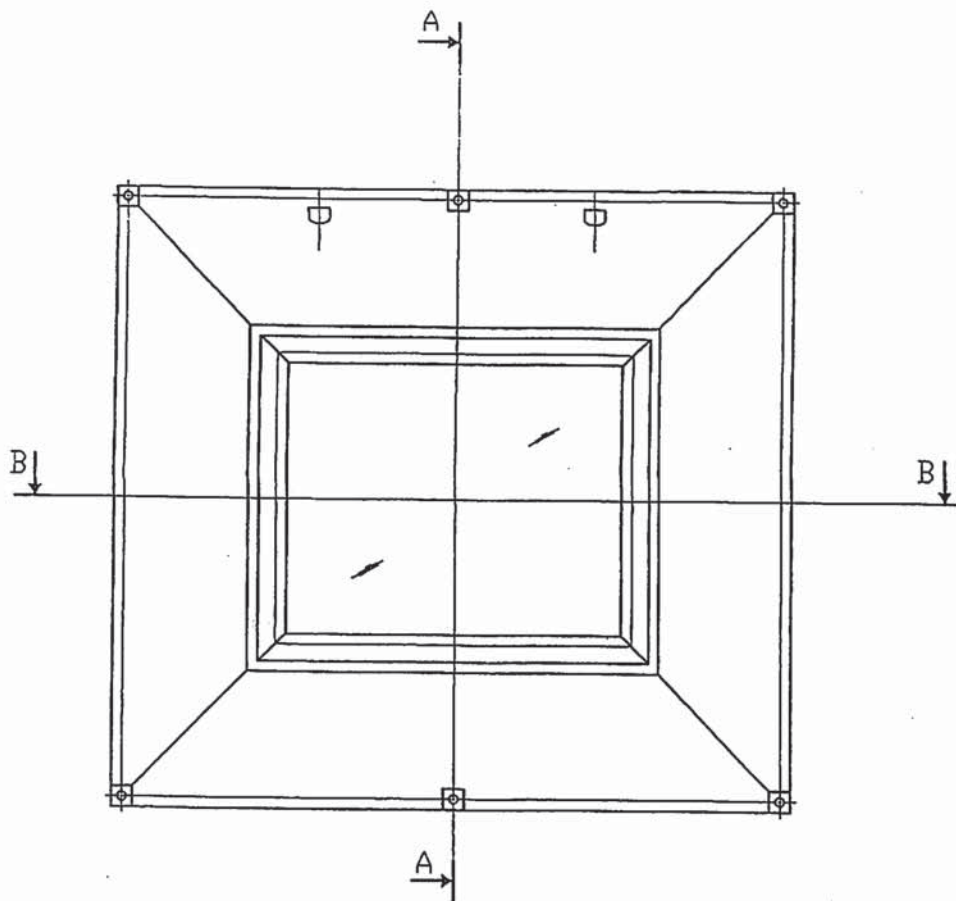


B-B SECTION - PLAN VIEW



(14)

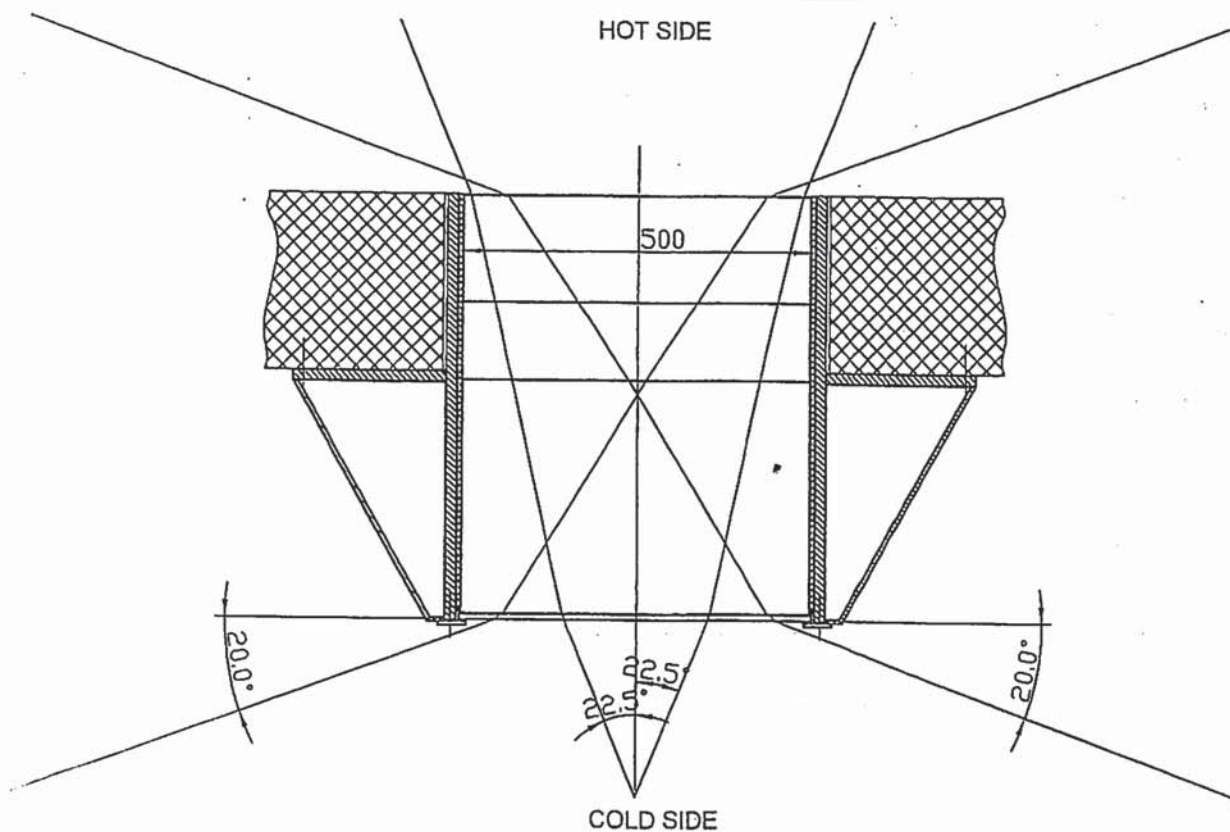
P-5/b



Radiation Resista

B-B SECTION - PLAN VIEW

HOT SIDE



AA SECTION - ELEVATION VIEW

