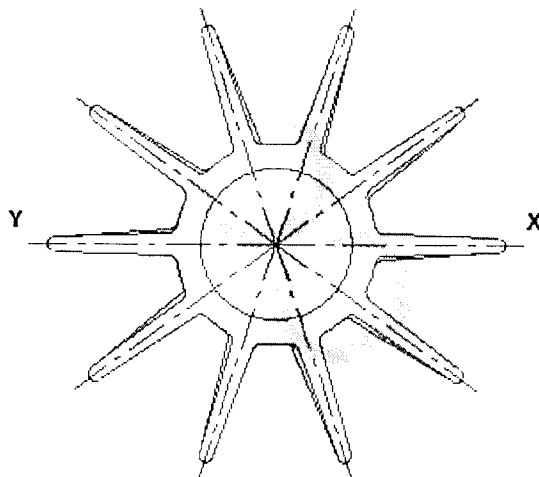
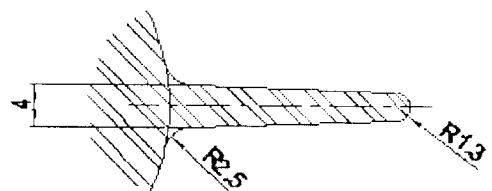
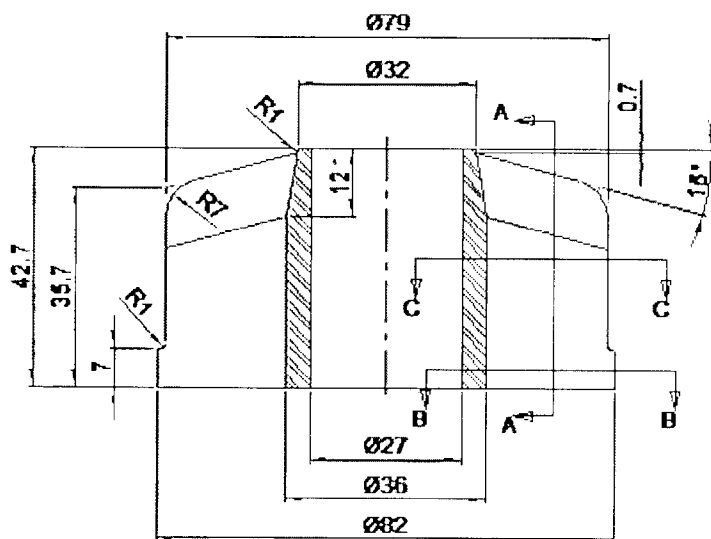
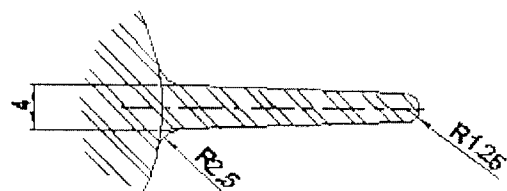
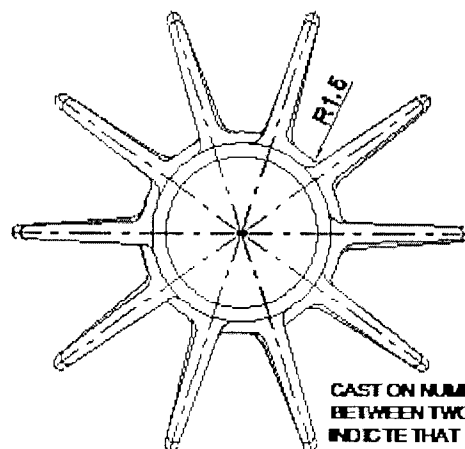
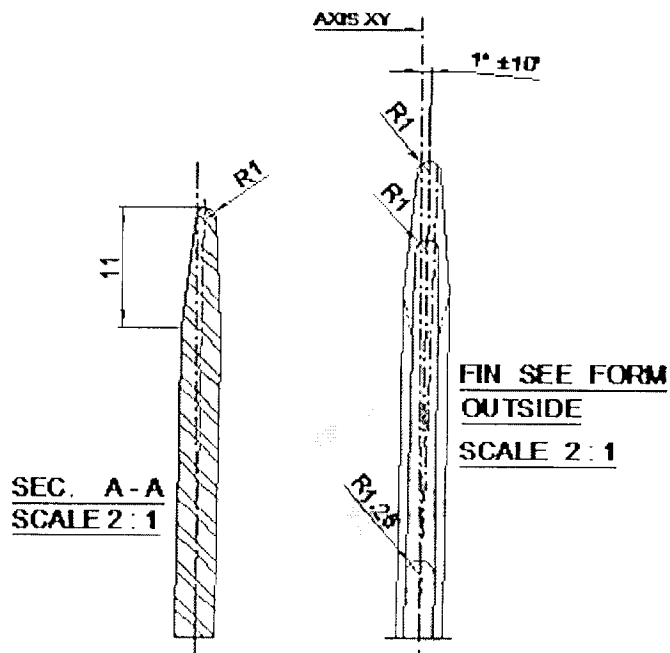


DIMENSIONS IN MM



# MATERIAL:-

- AU5 GT (CAST IN PERMANENT STATE TREATED METAL MOLD)
- MACHINE CHARACT  $R \geq 33$  h bar.  $A\% \geq 7$
- STATE OF SURFACE
- GENERAL MARGINS J13
- MASS 125 gr.

DRAWN.	
CHECKED.	
APP' VD.	
DRG. No.	