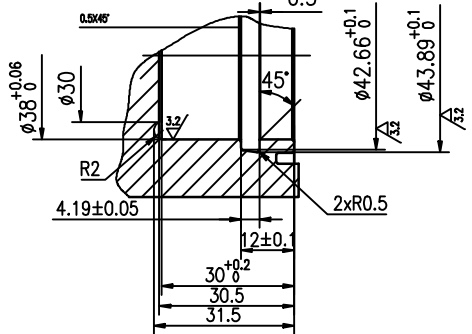
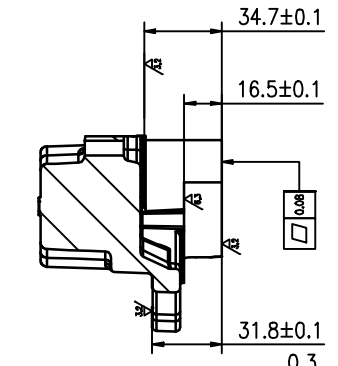
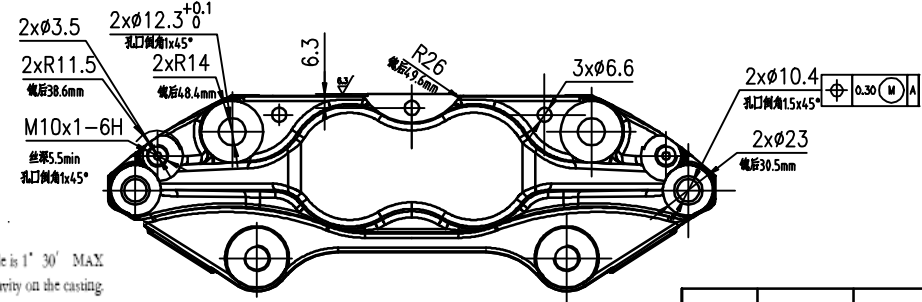
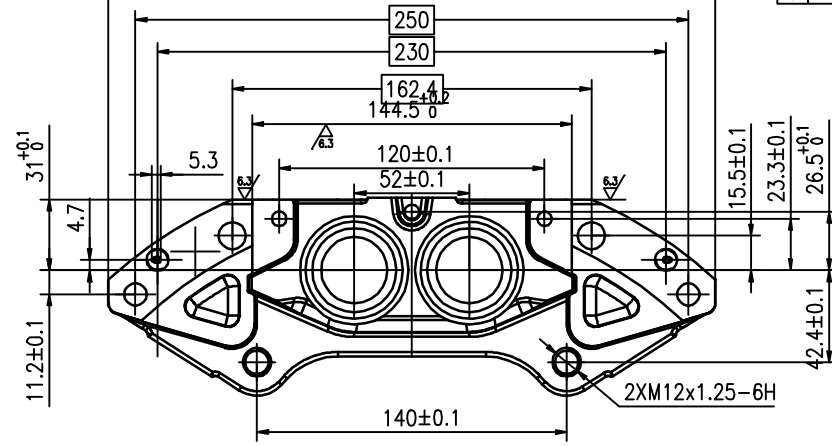
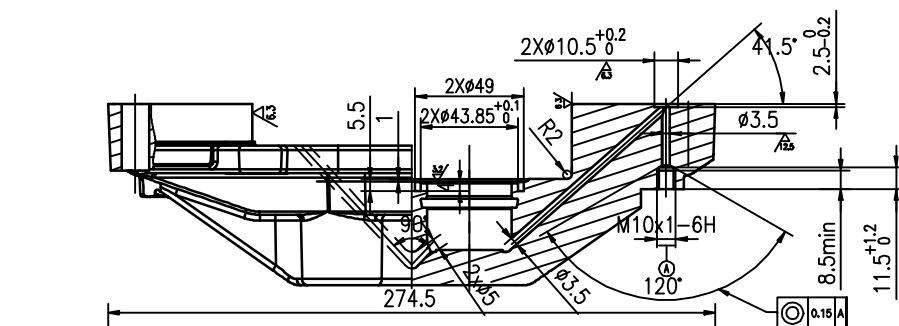


其余 ∇ 25



借通用件登记
描图
校描
旧底图总号
签字
日期

Technology requirement:
1.Unspecified fillet is R2-R3. The draft angle is 1° 30' MAX
2.No air hole, cinder inclusion, shrinkage cavity on the casting
3.The casting needs to be executed according to GB/T 1348-2009.
Graphitization degree of casting is no less than 3 level.
When casting, the cast needs artificial ageing treatment.
The hardness is HB 170-230.
4.The casting needs shot blast. No silver sand in the groove.
5.Unspecified machining chamfer is 0.5×45°. Unspecified process fillet is R0.5. Remove sharp corner, burrs.

casting unspecified size limit deviation(MM)					
basic size	size				
	0	63	100	160	250
to	±0.05	±0.07	±0.10	±0.15	±0.20
greater than	±1.0	±1.1	±1.3	±1.6	±2.2

casting unspecified size limit deviation(MM)					
basic size	size				
	0.5	3	6	30	120
to	±0.03	±0.05	±0.07	±0.10	±0.15
greater than	±0.1	±0.1	±0.2	±0.3	±0.5

标记	数量	日期
设计	标准审查	
校对	审定	
审核	批准	
工艺审查	日期	

casting 2
QT500-7

73.00A.6P05-002

图样标记	重量	比例
		1:1

共 页 第 页

QI Automotive
Professional Auto Parts