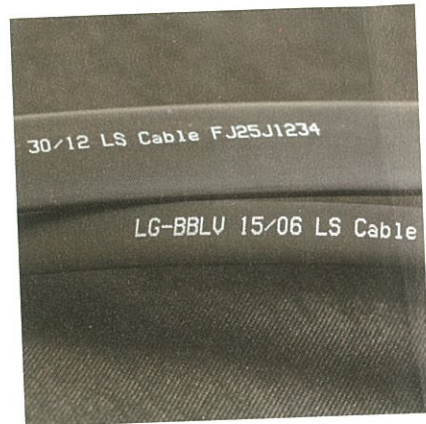


LG-BBLV

Low Voltage Busbar Insulation Tubing



Special Features

- Medium-wall tubing for the insulation up to 1kV.
- It provides protection against flashover by an accidental busbar bridging.
- It has excellent heat emission.
- It has excellent UV and weather resistance.
- It has excellent flame retardance and insulation.
- It has an outstanding shelf life at 50°C without any deterioration in performance.

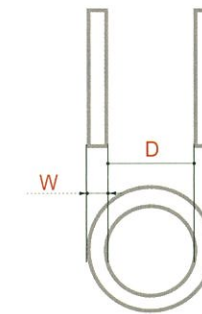
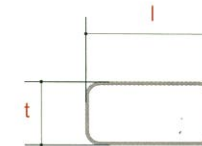
Application

- Suitable for both exposed and enclosed busbars.
- Suitable for connection among switchgears, motor control centers and other electrical equipments.
- Suitable for outdoor use.

Key Specifications

- Standards Qualification report for BBLV

Properties	Values	Test Methods		
Physical	Density	Max. 1.20g/cm ³ @23°C	ASTM D 792	
	Unaged	Tensile strength	Min. 1.5kgf/mm ²	ASTM D 638
		Elongation	Min. 400%	ASTM D 2671
	Aged	Tensile strength	Min. 1.3kgf/mm ²	ISO 37
		Elongation	Min. 350%	ASTM D 2671
	Heat shock	No crack @225°Cx4hrs	150°C/168hrs	ASTM D 2671
	Thermal endurance	TI/140°C		ASTM D 2671
Electrical	Low temperature flexibility	No crack @ -40°Cx4hrs	IEC 60216	
	Impact brittleness	Pass @ -40°C	ASTM D 2671	
	Dielectric strength	Min. 18kV/mm		ASTM D 746
		Volume resistivity	Min. 2x10 ¹⁴ Ω-cm	IEC 60243
	Tracking resistance	No track		IEC 60093
Chemical	Water absorption	Max. 0.1%	ASTM D 3638	
	Copper corrosion	No corrosion	ASTM D 570	
	Toxicity Index	Max. 7.25	ASTM D 2671	
	Flammability	Pass	NES 713	IEEE 27



Available Colors



Dimension

- Size range : 15/06 ~ 175/70 mm, special sizes are negotiable.

Size	Application Range (Busbar,mm)	D(mm) Inside Diameter		W(mm) Wall Thickness		Standard Spool Length (m)
		as supplied (min)	after recovery (max)	as supplied (nom)	after recovery (nom)	
15/06	24-36	15	6	0.5	1.5	30
30/12	42-76	30	12	0.5	1.5	30
50/20	68-120	50	20	0.5	1.5	30
75/30	100-172	75	30	0.5	1.5	30
100/40	132-220	100	40	0.5	1.5	30
120/50	164-244	120	50	0.5	1.5	30
150/50	172-314	150	50	0.5	1.5	30
175/70	240-400	174	70	0.5	1.5	30

• Above busbar range is recommended by LS

Handwritten notes: 25/1 and 175/50