

LIST OF DRILLING ACCESSORIES

3/5

#	Description	Quantity (Nos.)
Part-I (Drill Pipes)		
1	Drill Collar 5" O.D X 6m long X 2-1/4" I.D, 3-1/2" API IF pin and box connection, 04 Nos. break out wrench flats on box end. Provision with threads protector. Weight: 500Kg	12
2	Drill Collar 6" O.D X 6m long X 2-1/4" I.D, 4" API IF pin and box connection, 04 Nos. break out wrench flats on box end. Provision with threads protector. Weight: 675Kg	10
3	Drill Collar 8" O.D X 3m long X 4" I.D, 6-5/8 API Regular pin and box connection, 04 Nos. break out wrench flats on box end. Provision with threads protector. Weight: 700Kg	10
4	Float Valve Spiral Grooved Hard Faced Stabilizer 1.5m long for Ø5-7/8" hole, 3-1/2" API IF box to 3-1/2" API Regular box connection, 04 Nos. break out wrench flat on box end, Crown O.D: 5-5/8", Crown length: 14"/25", Mid body size: 5", Blade width: 2", I.D: 2-1/8".	03
5	Float Valve Spiral Integral Blade Hard Faced Stabilizer 1.5m long for Ø9-7/8" hole, 6-5/8"API Regular box to 6-5/8"API Regular box connection, 04 Nos. break out wrench flat on box end, Crown O.D: 9-3/8", Crown length: 15"/27", Mid body size: 8", Blade width: 2-1/2", I.D: 2-1/4".	02
6	Float Valve Spiral Integral Blade Hard Faced Stabilizer 1.5m long for Ø12-1/4" hole, 6-5/8"API Regular box to 6-5/8"API Regular box connection, 04 Nos. break out wrench flat on box end, Crown O.D: 12", Crown length: 16"/28", Mid body size: 8", Blade width: 3-1/4", I.D: 3-1/2".	02
7	Float Valve Spiral Integral Blade Hard Faced Stabilizer 1.5m long for Ø13-7/8" hole, 6-5/8"API Regular box to 6-5/8"API Regular box connection, 04 Nos. break out wrench flat on box end, Crown O.D: 13-3/8", Crown length: 18"/27", Mid body size: 8", Blade width: 4-1/2", I.D: 3-1/2".	02
8	Spiral Grooved Hard Faced Stabilizer 1.5m long for Ø5-7/8" hole, 3-1/2" API IF pin & box connection, 04 Nos. break out wrench flat on box end, Crown O.D: 5-5/8", Crown length: 14", Mid body size: 5", Blade width: 2", I.D: 2-1/8".	06
9	Spiral Integral Blade Hard Faced Stabilizer 1.5m long for Ø9-7/8" hole, 6-5/8"API Regular pin & box connection, 04 Nos. break out wrench flat on box end, Crown O.D: 9-3/8", Crown length: 15", Mid body size: 8", Blade width: 2-1/2", I.D: 2-1/4".	04
10	Spiral Integral Blade Hard Faced Stabilizer 1.5m long for Ø12-1/4" hole, 6-5/8"API Regular pin & box connection, 04 Nos. break out wrench flat on box end, Crown O.D: 12", Crown length: 16", Mid body size: 8", Blade width: 3-1/4", I.D: 3-1/2".	04
11	Spiral Integral Blade Hard Faced Stabilizer 1.5m long for Ø13-7/8" hole, 6-5/8"API Regular pin & box connection, 04 Nos. break out wrench flat on box end, Crown O.D: 13-3/8", Crown length: 18", Mid body size: 8", Blade width: 4-1/2", I.D: 3-1/2".	02
12	RH male fishing tape with 2-3/8"API IF box connection for SW casing.	02
13	LH male fishing tape with LH NW rod box connection for 3-1/2" O.D. drill pipe with 2-3/8"API pin & box.	04
14	LH male fishing tape with LH NW rod box connection for 4-1/2" O.D. drill pipe with 2-7/8"API pin & box.	04
15	LH male fishing tape with LH NW rod box connection for HQ drill pipe.	04
16	LH male fishing tape with LH NW rod box connection for HW casing.	04
17	LH male fishing tape with LH NW rod box connection for PW casing.	04
18	LH male fishing tape with LH NW rod box connection for SW casing.	02
19	Heavy duty magnet extractor with 2-3/8" API IF Box for Ø4-1/2" hole	02
20	Heavy duty magnet extractor with 2-3/8" API IF Box for Ø5-7/8" hole	02

315

LIST OF DRILLING ACCESSORIES

#	Description	Quantity (Nos.)
21	Heavy duty magnet extractor with 2-3/8" API IF Box for Ø7-7/8" hole	02
22	Heavy duty magnet extractor with 2-3/8" API IF Box for Ø9-7/8" hole	02
23	Heavy duty swivel hoist plug with 2-3/8" API IF pin. (15000 kg.), Sketch attached.	04
24	Heavy duty swivel hoist plug with 2-7/8" API IF pin. (15000 kg.), Sketch attached.	04
25	NRV Bit Sub 2-3/8" API IF box to 2-3/8" API regular box, 1m long.	04
26	NRV Bit Sub 2-3/8" API IF box to 3-1/2" API regular box, 1m long.	02
27	NRV Bit Sub 2-7/8" API IF box to 3-1/2" API regular box, 1m long.	04
28	NRV Bit Sub 2-7/8" API IF box to 4-1/2" API regular box, 1m long.	02
29	NRV Bit Sub 2-7/8" API IF box to 6-5/8" API regular box, 1m long.	02
30	Cross Over Sub 2-3/8" API IF box to 2-7/8" API IF pin, 0.5m long	04
31	Cross Over Sub 2-7/8" API IF box to 2-3/8" API IF pin, 0.5m long	04
32	Cross Over Sub 2-7/8" API IF box to 3-1/2" API IF pin, 0.5m long	04
33	Cross Over Sub 2-7/8" API IF box to 4" API IF pin, 0.5m long	04
34	Cross Over Sub 4" API IF box to 6-5/8" API Regular pin, 0.5m long	04
35	Heavy duty U shakle Capacity: 20ton	04
36	Open Wedge Socket size:16mm / 5/8"	04
37	Open Wedge Socket size:24mm	08
38	Cable Anchor with Pin Copper Ferrule Termination 5/8"	04
39	Cable Anchor with Pin Copper Ferrule Termination 24mm	08
40	Wire Rope Grip 5/8"	12
41	Wire Rope Grip 24mm	12
42	Chain 3/4"X1-1/2'	04
43	Hammer Lock 3/4"	08
44	Hammer Lock 1"	08
45	Link Regular	04
46	Link Large	04
Part-II (Coring and Fishing Accessories)		
1	Wireline coring rods HT (T-Series, tuff coring rods) chrome plated on box end, O.D 88.9mm, I.D 77.8mm, 3m long, Rated coring depth: 2600m, (Min. Yield Strength: 690MPa, Min. Tensile Strength: 813MPa). Make: Atlas Copco / Boart longyear	100
2	HQWL double tube swivel type core barrel assembly with chrome plating 18" length both ends (outer tube), complete, abrasive resistant, outer tube surface heat treated, effective length 5.00 meter complete with inner tube, knuckle head & landing indicator.	04
3	HQWL inner tube, 5.00 m long.	04
4	HQWL knuckle head assembly for inner tube.	04
5	Flush Joint SW Casing, Length: 3m Make: Atlas Copco/ Boart longyear	100
6	Flush Joint SW Casing, Length: 1.5m, Make: Atlas Copco/ Boart longyear	04
7	Flush Joint SW Casing, Length: 1m Make: Atlas Copco/ Boart longyear	04
8	Flush Joint PW Casing, Length: 3m, Make: Atlas Copco/ Boart longyear	50
9	Flush Joint HW Casing, Length: 3m, Make: Atlas Copco/ Boart longyear	50
10	Bowl Type Casing Clamp (Sketch attached)	02

415

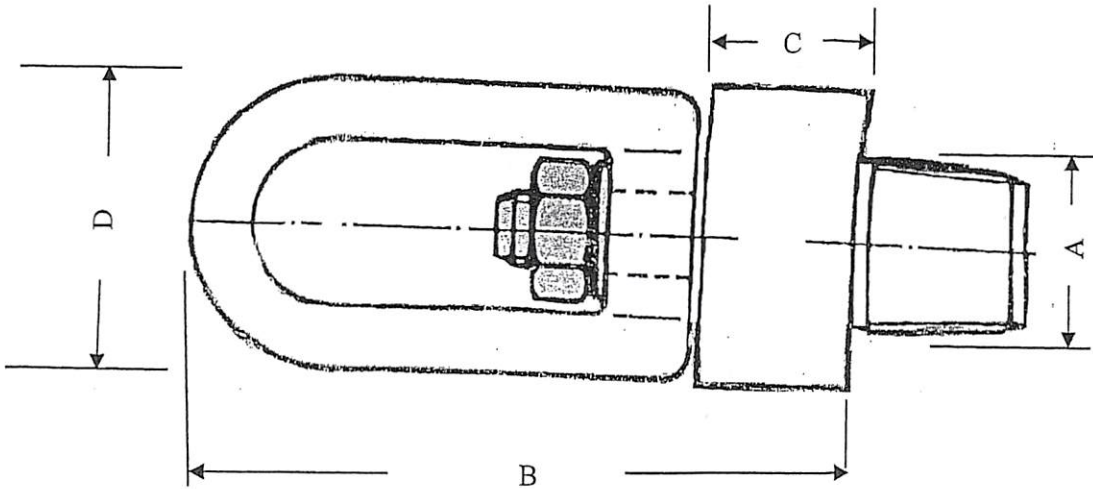
LIST OF DRILLING ACCESSORIES

#	Description	Quantity (Nos.)
11	Replacable Jaw set (2 Pcs) for HW casing.	02
12	Replacable Jaw set (2 Pcs) for PW casing.	02
13	Replacable Jaw set (2 Pcs) for SW casing.	02
14	Short Sub 2-7/8" API IF box to HQ Pin	06
15	Short Sub 2-3/8" API IF box to HQ Pin	04
16	Casing head 2-3/8" API IF box to HW Pin	04
17	Casing head 2-3/8" API IF box to PW Pin	04
18	Casing head 2-3/8" API IF box to SW Pin	04
19	Casing head 2-7/8" API IF box to SW Pin	02
20	Adopter Sub HW Casing Box to PW Casing Pin	04
21	Adopter Sub HW Casing Box to SW Casing Pin	04
22	Adopter Sub PW Casing Box to SW Casing Pin	04
23	Tugstun carbide insert casing / core bit 4" X 5"	05
24	Tugstun carbide insert casing / core bit 5" X 6"	05
25	Tugstun carbide insert casing / core bit 6" X 7"	05
26	Tugstun carbide insert casing / core bit 8" X 9"	02
27	Tugstun carbide insert casing / core bit 9" X 10"	02
28	Surface set diamond casing / core bit 4" X 5", 25/40 SPC	10
29	Surface set diamond casing / core bit 5" X 6", 25/40 SPC	10
30	Surface set diamond casing / core bit 6" X 7", 25/40 SPC	10
31	Surface set diamond casing / core bit 8" X 9" with SW box, 25/40 SPC	04
32	Surface set diamond casing / core bit 9" X 10" with SW box, 25/40 SPC	04
33	Bit Sub HW casing box to 4" X 5" bit Pin	02
34	Bit Sub PW casing box to 5" X 6" bit Pin	02
35	Bit Sub SW casing box to 6" X 7" bit Pin	02
36	Bit Sub SW casing box to 8" X 9" bit Pin	02
37	Bit Sub SW casing box to 9" X 10" bit Pin	02

Note:

All the offers must be supported by technical literatures. The firms must be API and DCDMA certified manufacturers for drill rods and coring / casing bits. Country of origin should be Western Europe / USA or equivalent. Preshipment inspection of accessories will be mandatorily undertaken by two drilling engineer of this project if the contract is awarded to firms offering stores of equivalent country of origin. Incomplete bids against any package will be rejected as all bids will be evaluated on package deal basis.

Sketch of Part-I (Sr. No. 23 & 24)



Sr. 23

- A: 3-9/16"
- B: 6" Aproximately
- C: 5"
- D: 3-1/2"

Sr. No. 24

- A: 4-9/16"
- B: 6" Aproximately
- C: 5"
- D: 4-1/2"

- Knurling on hoisting plug body must be made.
- Venting hole in plug must be made and to be plugged with a countersunk screw.
- Thusrt bearing under nut must be provided.
- Lifting bail with 1" round bar.

Part-II (Sr. No. 10)
Sketch

