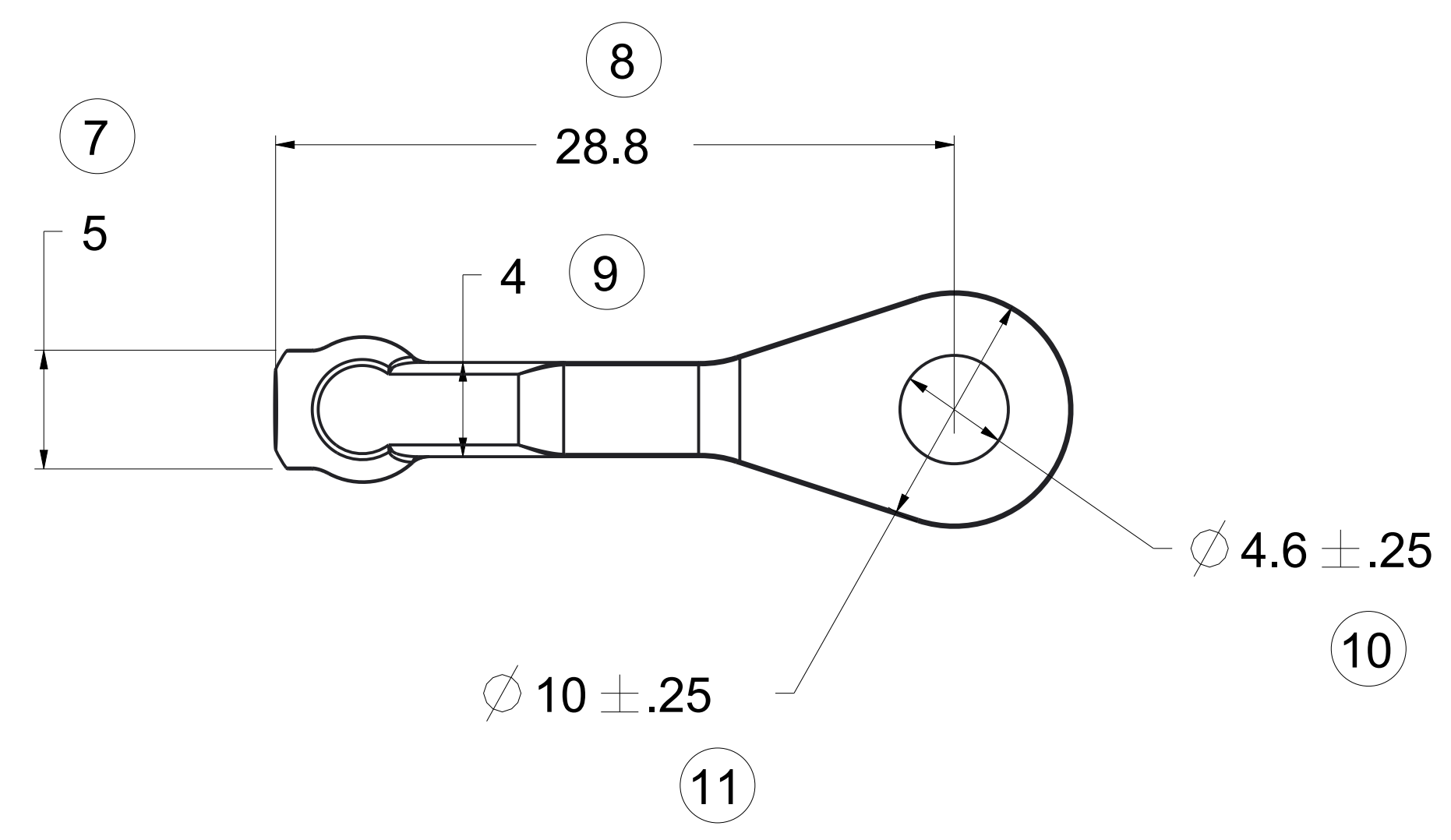
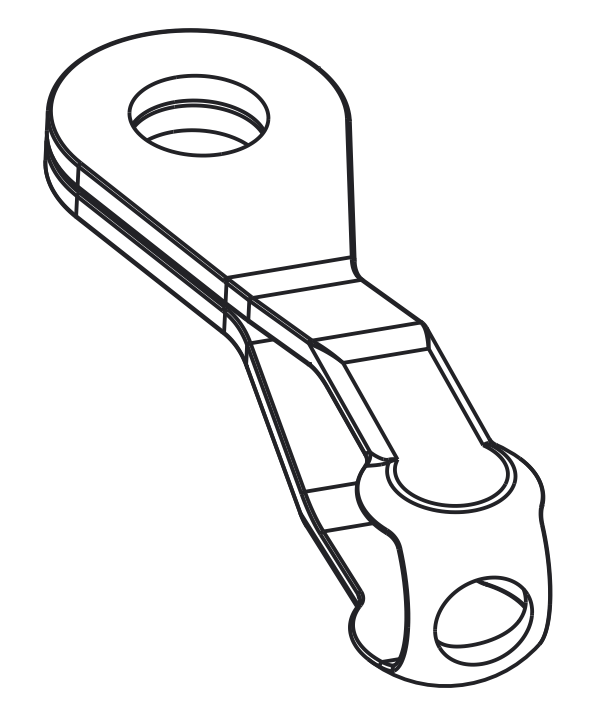
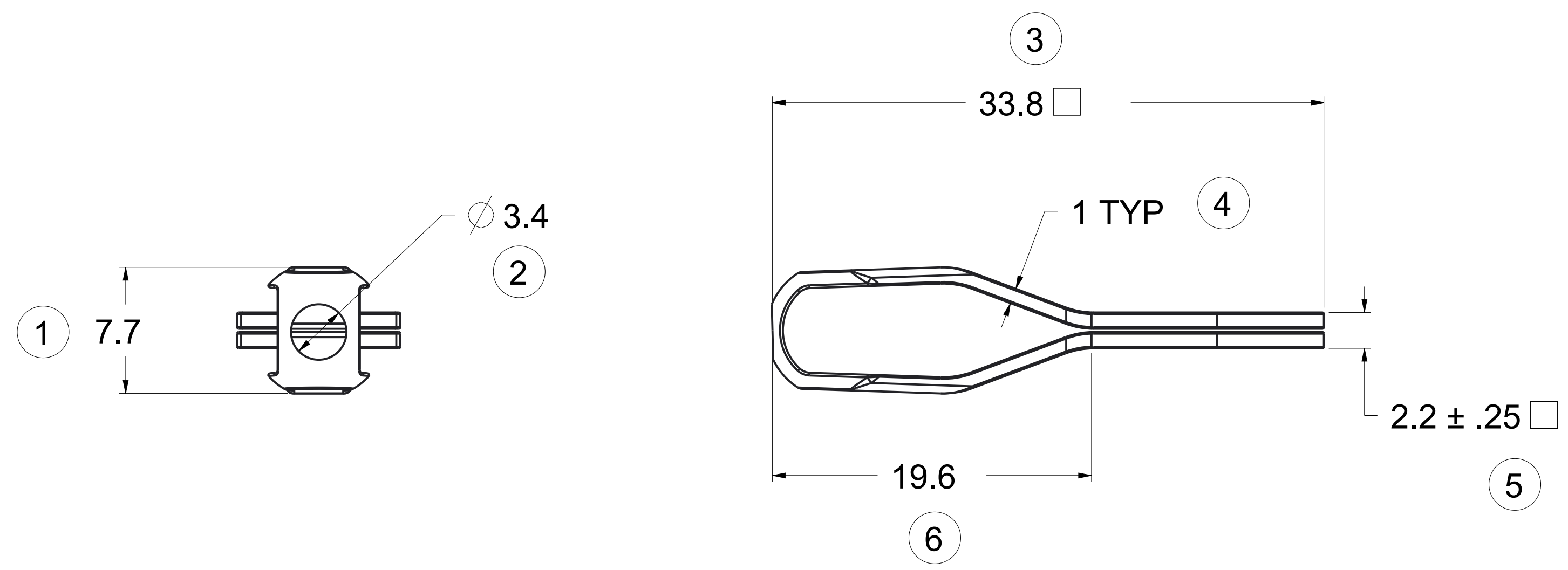


REV	DATE	DESCRIPTION	BY
A	2015-04-27	INITIAL RELEASE OF DRAWING	SLR



NOTES

- 1) APPLICABLE STANDARDS/SPECIFICATIONS. 使用标准：ASME Y14.5M-1994尺寸和公差
ASME Y14.5M-1994 DIMENSIONS AND TOLERANCES.
- 2) REMAINDER OF DIMENSIONS VIA 3D CAD DATA. 其余尺寸依据3D CAD 数据
- 3) UNLESS OTHERWISE SPECIFIED 无特殊说明，尺寸单位为毫米
DIMENSIONS ARE IN MILLIMETERS
TOLERANCES 公差
X. ±0.5
.X ±0.25mm
.XX ±0.12mm
ANGLES ±1.0° 角度
- 4) BREAK ALL INTERNAL AND EXTERNAL SHARP EDGES
.25MM MINIMUM UNLESS OTHERWISE SPECIFIED. 修剪浇口，和周边平面有0.25的公差
- 5) MATERIAL: T302/304 STAINLESS STEEL. 材料：T302/304不锈钢
ALL MATERIAL AND METHODS TO BE RoHS COMPLIANT. ROHS
- 6) COLOR: N/A 颜色：无
- 7) FINISH: N/A 表面处理：无
- 8) PROTECTIVE WRAP OR PACKAGING IS REQUIRED TO PREVENT DAMAGE DURING SHIPMENT AND HANDLING UNLESS OTHERWISE APPROVED BY ALPHA SECURITY PRODUCTS. 除非通过ALPHA批准，在运输及搬运过程中要求有保护套或包装来避免破坏
- 9) INSPECT FOR DAMAGE. 破损检验

DESIGNER	ENG
PRODUCT ENGINEER	ENG
MFG ENGINEER	MFG
SCALE 1.000	DWG SIZE D
SHEET 1 OF 1	

LLD

<small>THIS DRAWING AND THE RELATED DATA FILES ARE THE CONFIDENTIAL PROPERTY OF CHECKPOINT SYSTEMS, INC. AND ITS ALPHA HIGH SECURITY DIVISION. THIS DRAWING AND THE RELATED DATA FILES MAY NOT BE, IN WHOLE OR IN PART, REPRODUCED OR COPIED, PROVIDED TO OTHERS, OR USED IN ANY MANNER THAT IS UNAUTHORIZED BY CHECKPOINT SYSTEMS, INC. AND WILL BE RETURNED OR DESTROYED UPON REQUEST BY CHECKPOINT SYSTEMS, INC. THE TERMS OF A NON-DISCLOSURE AGREEMENT WITH CHECKPOINT SYSTEMS, INC. APPLY TO THIS DRAWING AND THE RELATED DATA FILES.</small>		
PROJECT NAME	COMMON PART	
TITLE	EYE TERMINAL	
DRAWING NO.	STATE	REVISION
F1107005		