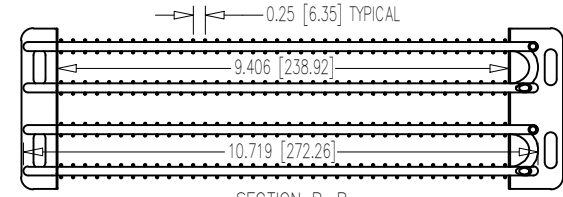
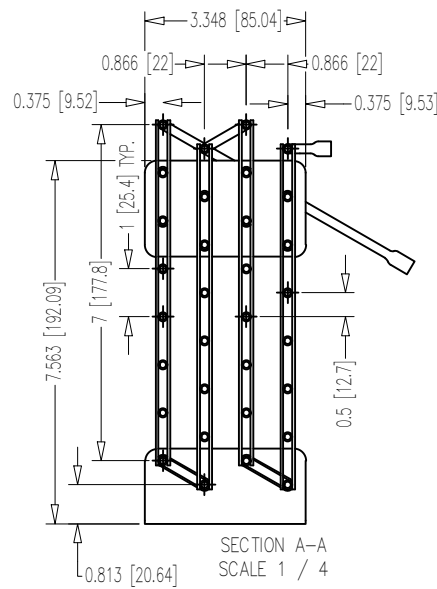


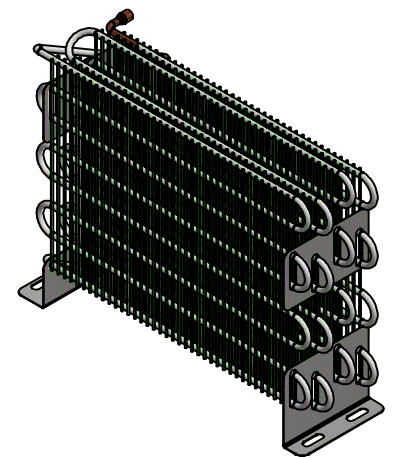
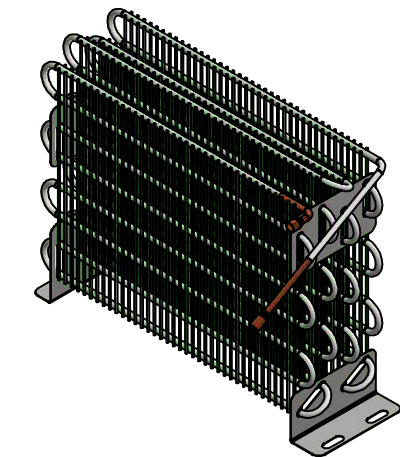
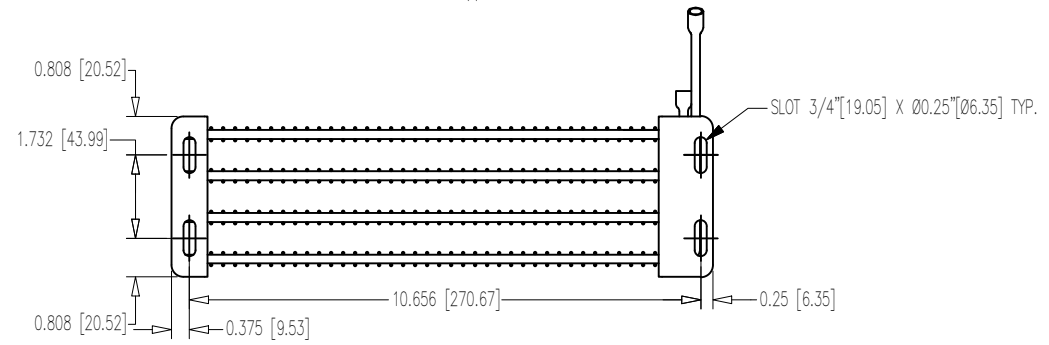
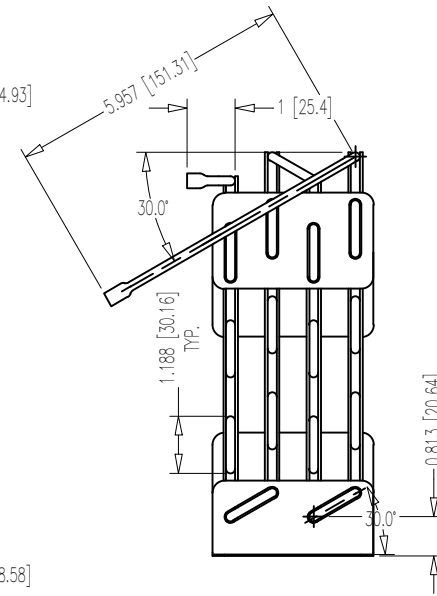
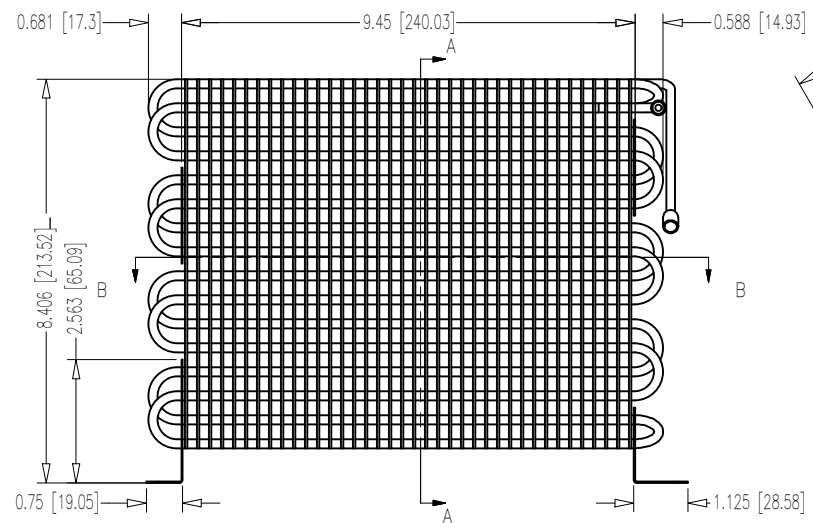
| FECHA | SIM. | REVISION | AUT. | DIB. | VIA |
|-------|------|----------|------|------|-----|
| | | | | | |
| | | | | | |
| | | | | | |



SECTION B-B
SCALE 1 / 4



SECTION A-A
SCALE 1 / 4



SPECIFICATIONS:

- TUBING= GALVANIZED STEEL ø3/16" [4.7625] OD. - WALL THICKNESS TUBE= CO2 REQUIREMENTS FOR U.L. PRESSURE RATING/SUGGESTED BY MANUFACTURER.
- INLET AND OUTLET MUST BE OF COPPER TUBING ø3/16" [4.7625] OD. WALL THICKNESS TUBE: CO2 REQUIREMENTS FOR U.L. PRESSURE RATING/SUGGESTED BY MANUFACTURER.
- TUBE LENGTH= 360" [9144]
- RUBBER CAPS= 2 CAPS ø3/16" [4.76] X 1 3/4" [44.45]
- SPACERS= 38 SPACERS ø0.057" [1.45] IN BOTH FACES
- LENGTH SPACERS= 7 3/16" [183]
- FINISH = POWDER COATING BLACK COLOR
- THE INTERNAL TUBING MUST BE FREE OF GREASE, DIRT, MOISTURE, METAL SHAVINGS AND SLAGS OR ANY OTHER COMPONENT THAT MIGHT AFFECT THE PROPER FUNCTIONING.
- LEAK TEST WITH DRY AIR OR NITROGEN.
- APPROVALS - UL AND CSA APPROVED COMPONENT FOR USE WITH CO2 REFRIGERATION SYSTEMS.
- THIS COMPONENT MUST PASS U.L. FATIGUE TEST.
- SUPPLIER MUST PROVIDE BURST PRESSURE FOR THIS HEAT EXCHANGER.
- UNITS= INCHES [MILLIMETERS]
- STEEL PLATES AND BRACKETS: WELDED 25-GAUGE GALVANIZED STEEL.

| | | | | |
|---|-------------------|----------------|----------------|-------------|
| | TITULO: | | | |
| | GAS COOLER CO-452 | | | |
| FECHA : 26/01/2016 | APROBADO POR: | DISEÑADO POR: | DIBUJADO POR: | |
| ESCALA: 1/4" = 1" | ING. H. VALDES | ING. ALEX CRUZ | ING. ALEX CRUZ | |
| USADO EN: COMPRESORES 1/4HP + ASPA DE 8" | | | | |
| REF. DWG: \\Fogel3b\dwg\Evaporadores & Condensadores\Condensadores\Tolvas\TOLVA CO-452\CO-452.dwg | ULTIMOS CAMBIOS: | | | |
| REF. IPT: \\Fogel3b\dwg\Evaporadores & Condensadores\Condensadores\Tolvas\TOLVA CO-452\CO-452.iam | 21/05/2016 | | | |
| MATERIAL: | TOLERANCIA: | FORMATO | PROGRAMA CNC: | DIBUJO No.: |
| GALV. 25 | ±1/32" | OFICIO | N/A | CO-452 |