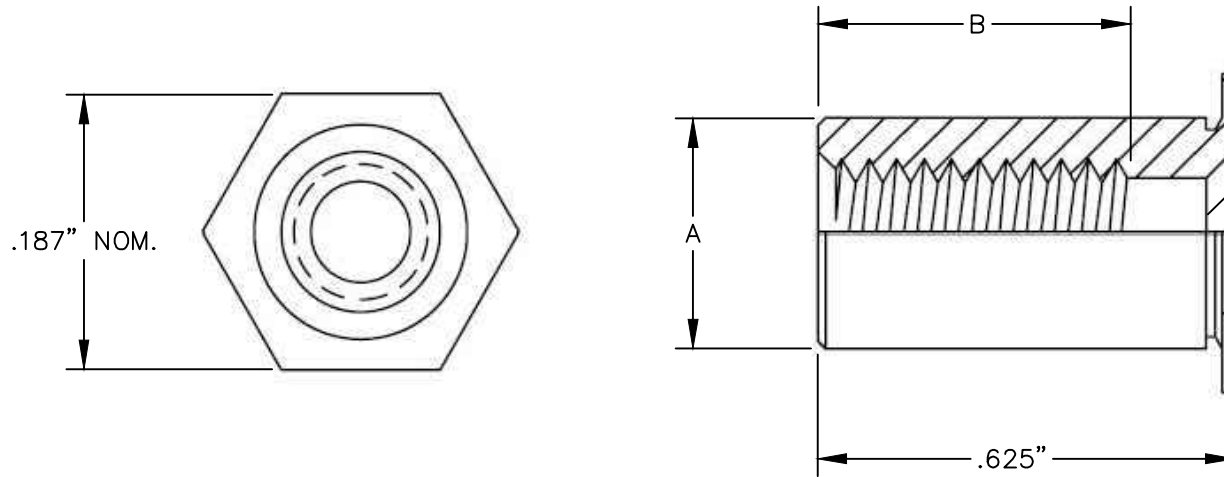



Must be RoHS 2002/95/EC compliant.  
 Certification of compliance must be available upon request.



THREAD	THREAD CODE	SHEET THICKNESS MINIMUM	HOLE SIZE IN SHEET +.003/-0.000	(A) DIA +.000/-0.013	(B) THREAD DEPTH MINIMUM	DIST. HOLE CENTERLINE TO EDGE MIN.
4-40	440	.040"	.166"	.165"	.250	.23"

NOTES:

1. MATERIAL: ZINC PLATED STEEL
2. STANOFF LENGTH TOLERANCE: +.08/-0.00

						DRAWN: 05/01/13	BY: GJK	This drawing is the proprietary and confidential property of Schumacher Electric Corporation. Dissemination of this document or the information contained herein is prohibited without the express permission of the Director of Engineering. Use of this document by any supplier or distributor is expressly limited to the use authorized by Schumacher Electric Corporation in providing it to you.
						CHECKED: 05/01/13	BY: LPA	
						APPROVED: 05/01/13	BY: DLA	
						SCALE: NTS	SIZE: A	
						STANDOFF 4-40 SELF-CLINCHING .625IN LG		
						ALL DIMENSIONS IN INCHES UNLESS OTHERWISE SPECIFIED	 <b>SCHUMACHER ELECTRIC</b> 801 BUSINESS CENTER DRIVE MT. PROSPECT, ILLINOIS 60056	PART NUMBER:
00	INITIAL RELEASE	7135	05/01/13	GJK	TOLERANCES FRACTIONAL ±1/64 DECIMAL ±.003 ANGULAR ±5MIN.	2199700072		
NO.	REVISION	ECN	DATE	SIG.				Sheet of