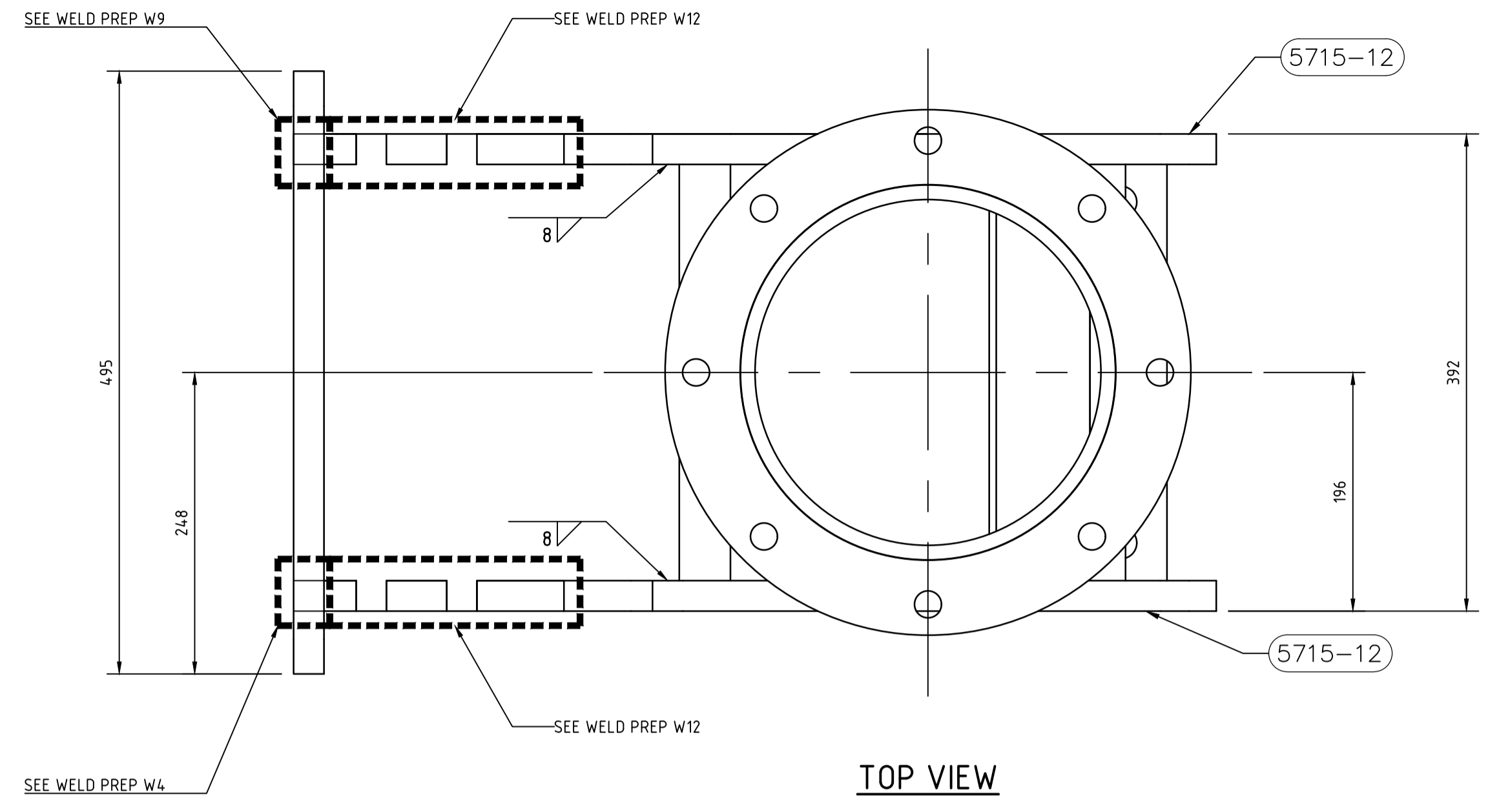


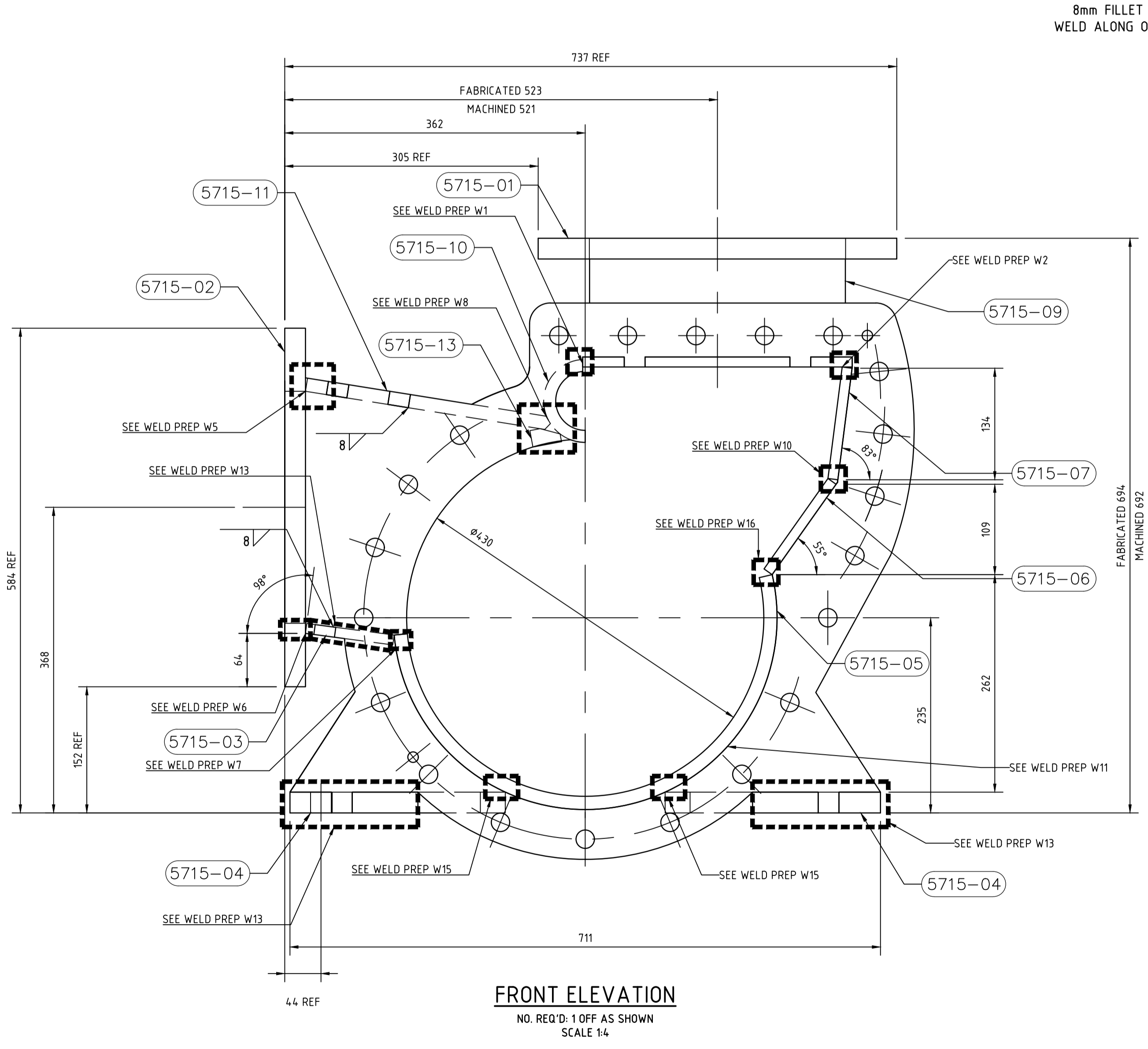
ITEM	DESCRIPTION	PART NAME	QTY	MATERIAL	STORE CODE	COMMENTS
5715-01	25 PL, Ø432 OD, Ø308.5 ID	TOP FLANGE	1	304 SS	5168595	PROFILE CUT
5715-02	25 PL, 432 x 495 LG.	SQUARE FLANGE	1	304 SS	5168595	PROFILE CUT
5715-03	12 PL, 103 x 392 LG.	BOTTOM OF INPUT CHUTE	1	304 SS	5168595	PROFILE CUT & PREP EXTERNALLY
5715-04	25 PL, 259 x 392 LG.	BASE PLATE	2	304 SS	5168595	PROFILE CUT
5715-05	16 PL, ROLLED TO IR.215, 392 x 737 DEVELOPED LENGTH	BOTTOM WEAR PLATE	1	304 SS	5168595	PROFILE CUT
5715-06	12 PL, 133 x 392 LG.	MIDDLE WEAR PLATE	1	304 SS	5168595	PROFILE CUT
5715-07	12 PL, 135 x 392 LG.	TOP WEAR PLATE	1	304 SS	5168595	PROFILE CUT
5715-08	12 PL, 324 x 392 LG.	BASE OF OUPUT CHUTE	1	304 SS	5168595	PROFILE CUT & PREP EXTERNALLY
5715-09	12 PL, ROLLED TO IR.142, 155 x 930 DEVELOPED LENGTH	OUTPUT CHUTE	1	304 SS	5168595	PROFILE CUT
5715-10	ROUND HOLLOW BAR, 100x71, 342 LG.	ROUND BAR HOUSING SHAFT	1	304 SS	5168595	CUT TO DETAIL
5715-11	16 PL, 297 x 392 LG.	TOP OF INPUT CHUTE	1	304 SS	5168595	PROFILE CUT & PREP EXTERNALLY
5715-12	25 PL, 670 x 752 LG.	SIDE PLATE	1 AS DRAWN, 1 OPP HAND	304 SS	5168595	PROFILE CUT & PREP EXTERNALLY. BOLTS HOLES ARE NOT TO BE DRILLED
5715-13	20 PL, 35 x 342 LG.	MACHINED FLAT SURFACE	1	304 SS	5168595	PROFILE CUT & PREP EXTERNALLY

**NOTES**

- ALL SHARP EDGES AND BURRS TO BE REMOVED.
- UNLESS OTHERWISE SPECIFIED, DIMENSIONS ARE IN MILLIMETRES, TOLERANCES: LINEAR +0.500, -0.500. MACHINED: +0.050, -0.050
- ALL WELD PREPS TO BE GRINDED BACK BEFOREHAND UNLESS OTHERWISE NOTED
- ALL WELDS TO BE 6mm CONTINUOUS FILLET WELDS UNLESS OTHERWISE NOTED.

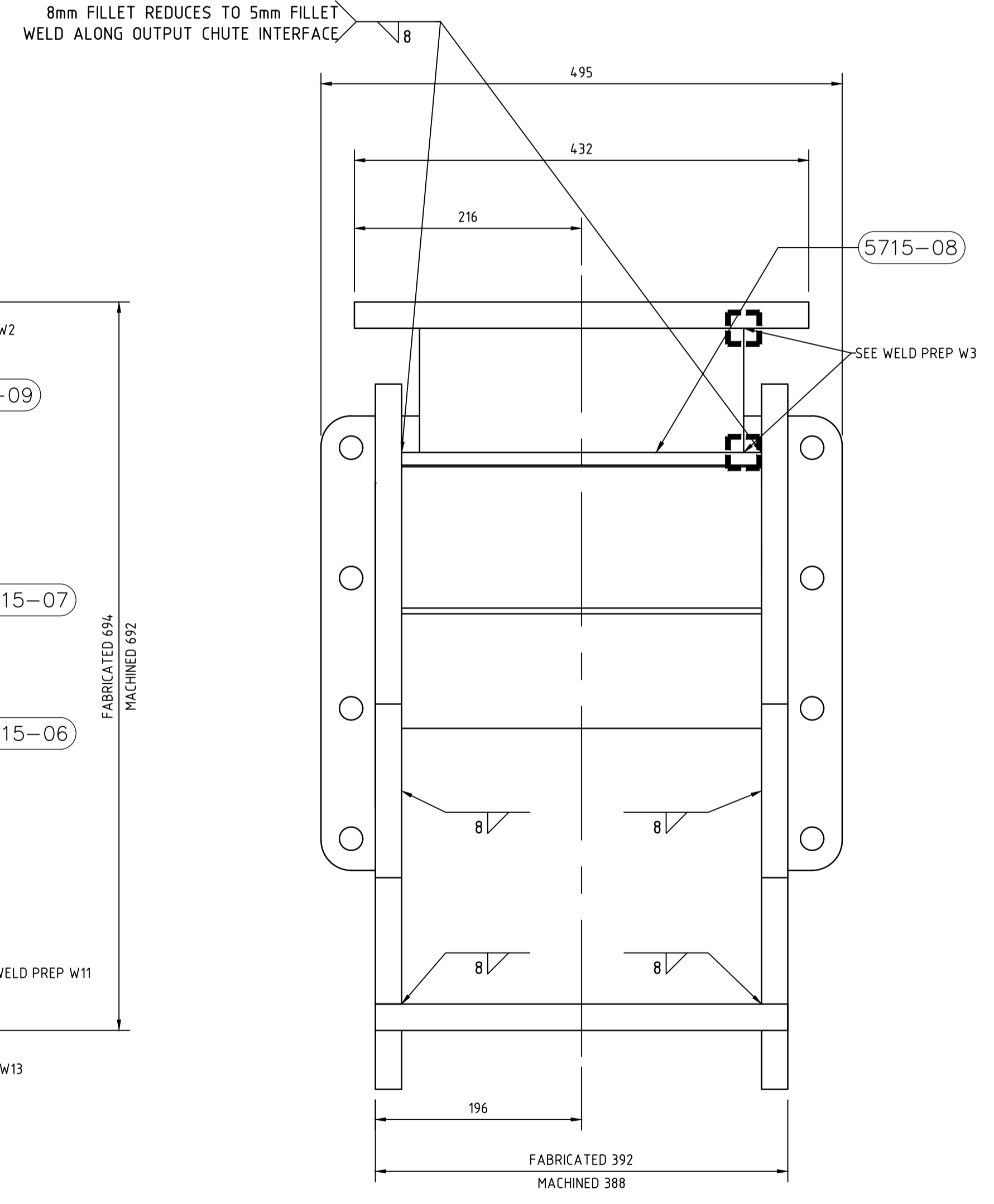


**TOP VIEW**

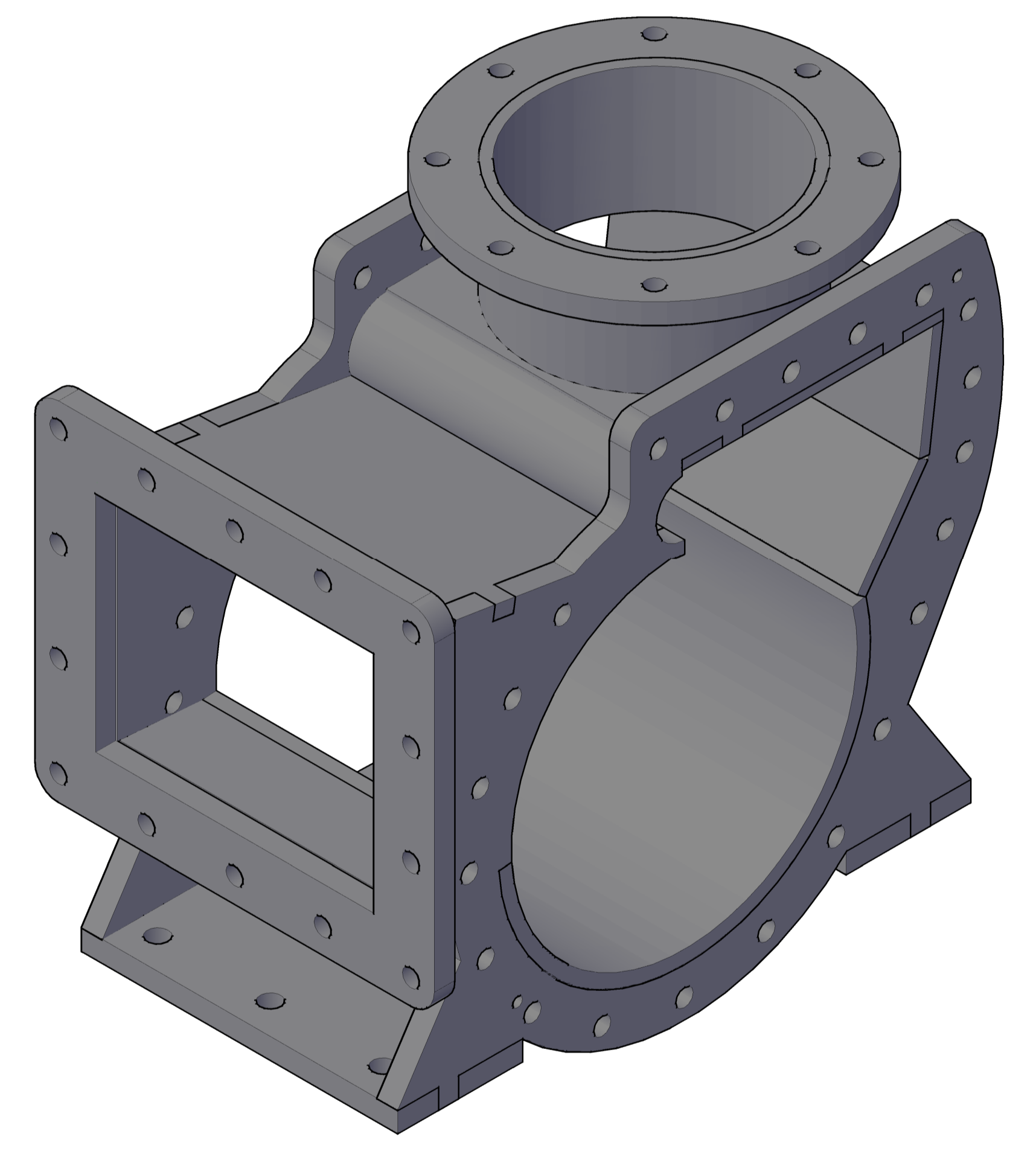


**FRONT ELEVATION**

NO. REQ'D: 1 OFF AS SHOWN  
SCALE 1:4



**SIDE ELEVATION**

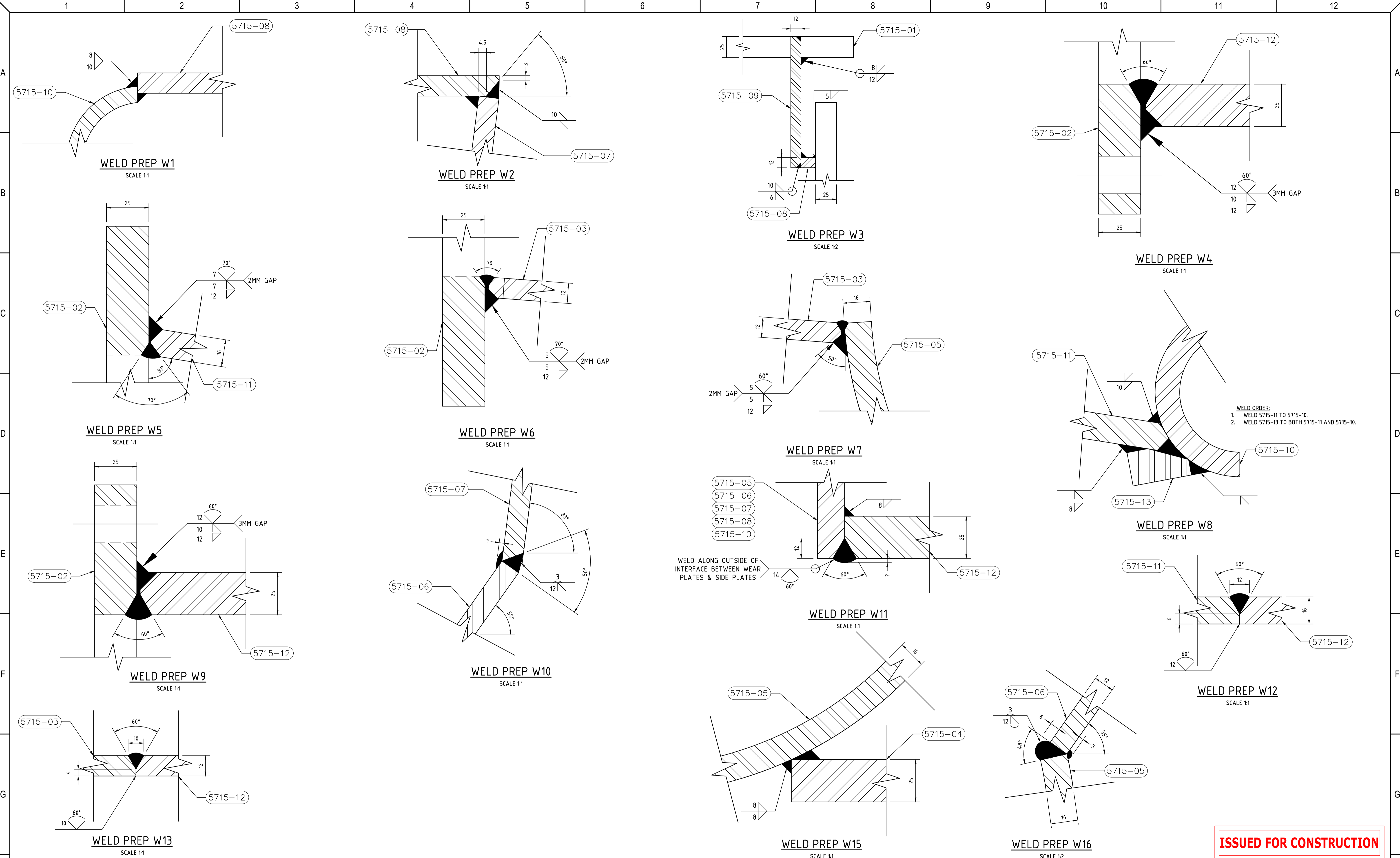


**3D ISOMETRIC VIEW**

**数量3件，材质按WCB 和304L分别报价**  
**FOR CONSTRUCTION**

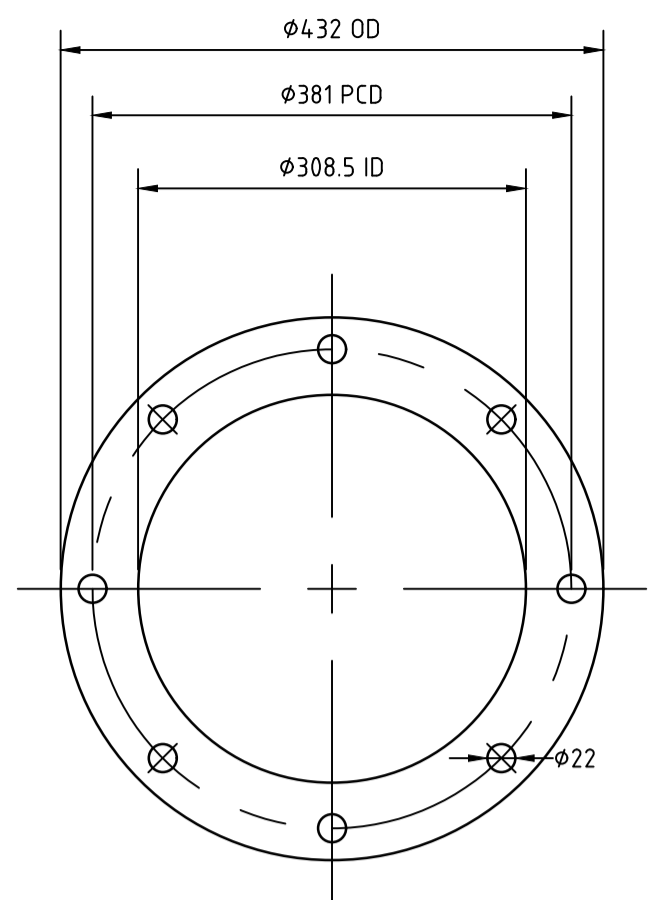
REVISIONS					REFERENCE DRAWINGS			DESIGNED	WILMAR	25/10/22	THIRD ANGLE PROJECTION DO NOT SCALE	The design and engineering content shown on this drawing remains the property of STS and may not be copied in any way without prior written approval from the company. © STS	STS ABN 44 081 051 792		
REV	BY	CHK	APP	DATE	DESCRIPTION	TITLE	DRAWING No.	SCALE	AS SHOWN						
6	CN	RF	NE	11/06/24	UPDATED PARTS			DRAWN	C. NOLAN	02/03/23	<b>TITLE</b> <b>6300 GROUP</b> <b>PAN (Sugar Crystallisation)</b> <b>FORRERS 11" MASSECUITE PUMP</b> <b>BODY PLATING, STORE CODE 5168596</b> <b>ARRANGEMENT &amp; DETAILS</b>	ORIG. DRAWING No.	Sht	A1	
1	CN	RF	NE	02/03/23	UPDATED PARTS AND ADDED WELD DETAIL			DESIGN CHK	R. FALLON	02/03/23		DRAWING No.	SHEET	REV	
2	CN	RF	NE	15/05/23	ADDED DIMENSIONS			APPROVED	N. ECKERSLEY	02/03/23		6300-PAN-M-005715K	01	6	
3	CN	RF	NE	30/08/23	UPDATED PARTS & ADDED WELD DETAILS			RPEQ	N/A	N/A			04		
4	CN	RF	NE	11/09/23	UPDATED WELD DETAILS			SCALE	AS SHOWN						
5	CN	RF	NE	13/09/23	UPDATED PART			This Drawing must not be used for Construction unless signed as Approved							



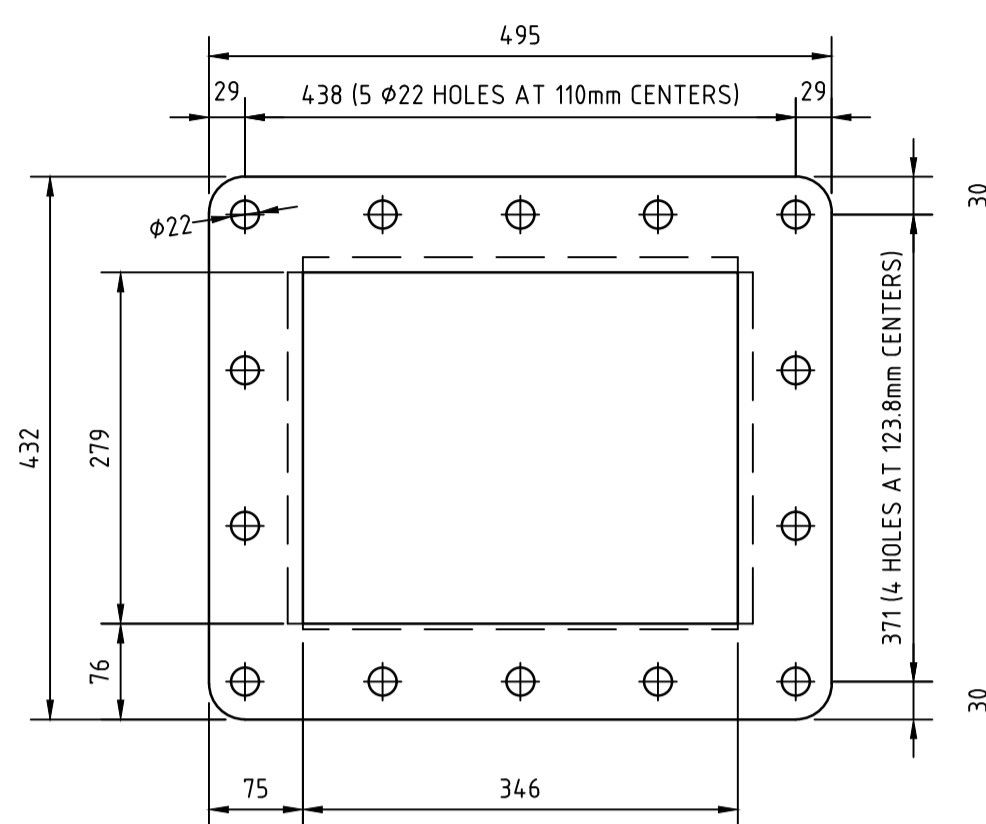
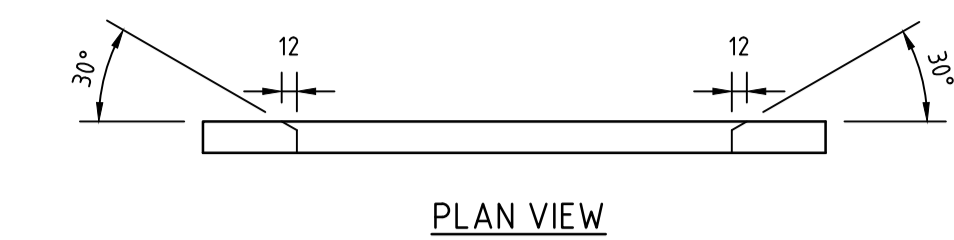


**ISSUED FOR CONSTRUCTION**

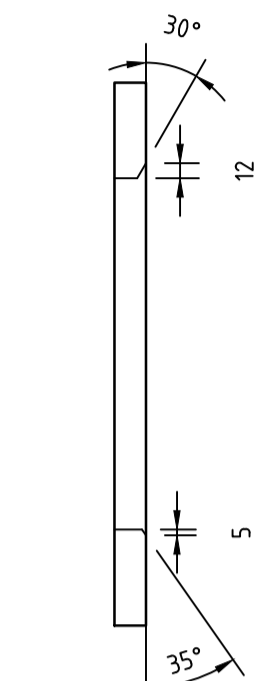
REVISIONS						REFERENCE DRAWINGS			DESIGNED	WILMAR	25/10/22	THIRD ANGLE PROJECTION DO NOT SCALE	The design and engineering content shown on this drawing remains the property of STS and may not be copied in any way without prior written approval from the company. © STS	STS ABN 44 081 051 792		
6	CN	RF	NE	11/06/24	UPDATED PARTS				DRAWN	C. NOLAN	02/03/23			<b>TITLE</b> 6300 GROUP PAN (Sugar Crystallisation) FORRERS 11" MASSECUITE PUMP BODY PLATING, STORE CODE 5168596 ARRANGEMENT & DETAILS	ORIG. DRAWING No.	Sht
1	CN	RF	NE	02/03/23	UPDATED PARTS AND ADDED WELD DETAIL				DESIGN CHK	R. FALLON	02/03/23	DRAWING No.	SHEET		REV	
2	CN	RF	NE	15/05/23	ADDED DIMENSIONS				APPROVED	N. ECKERSLEY	02/03/23	6300-PAN-M-005715K	02		6	
3	CN	RF	NE	30/08/23	UPDATED PARTS & ADDED WELD DETAILS				RPEQ	N/A	N/A		04			
4	CN	RF	NE	11/09/23	UPDATED WELD DETAILS				SCALE	AS SHOWN						
5	CN	RF	NE	13/09/23	UPDATED PART				This Drawing must not be used for Construction unless signed as Approved							
REV	BY	CHK	APP	DATE	DESCRIPTION	TITLE	DRAWING No.									



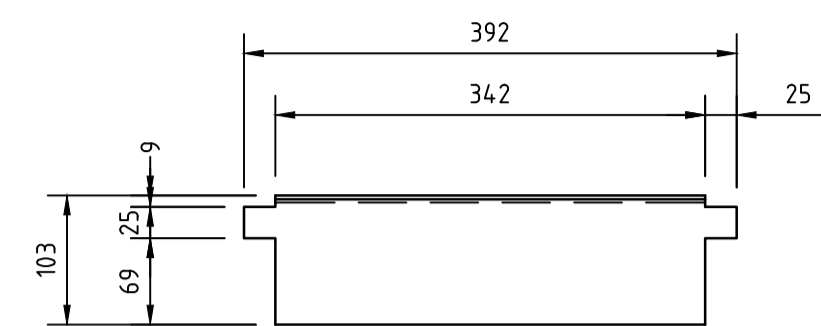
**5715-01**  
MATERIAL: 25 PL, 304 STAINLESS STEEL  
No. REQ'D: 1 OFF  
SCALE 1:6



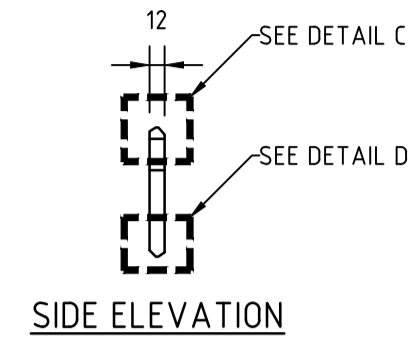
**5715-02**  
MATERIAL: 25 PL, 304 STAINLESS STEEL  
No. REQ'D: 1 OFF  
SCALE 1:6



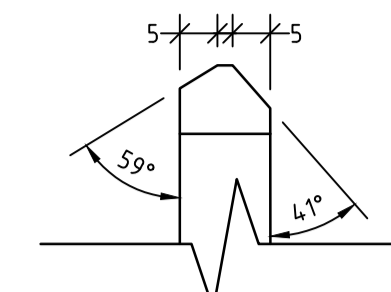
SIDE ELEVATION



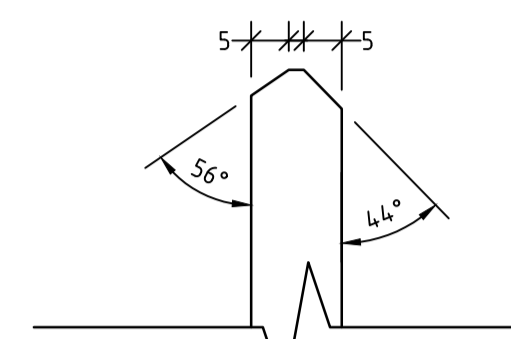
**5715-03**  
MATERIAL: 12 PL, 304 STAINLESS STEEL  
No. REQ'D: 1 OFF  
SCALE 1:6



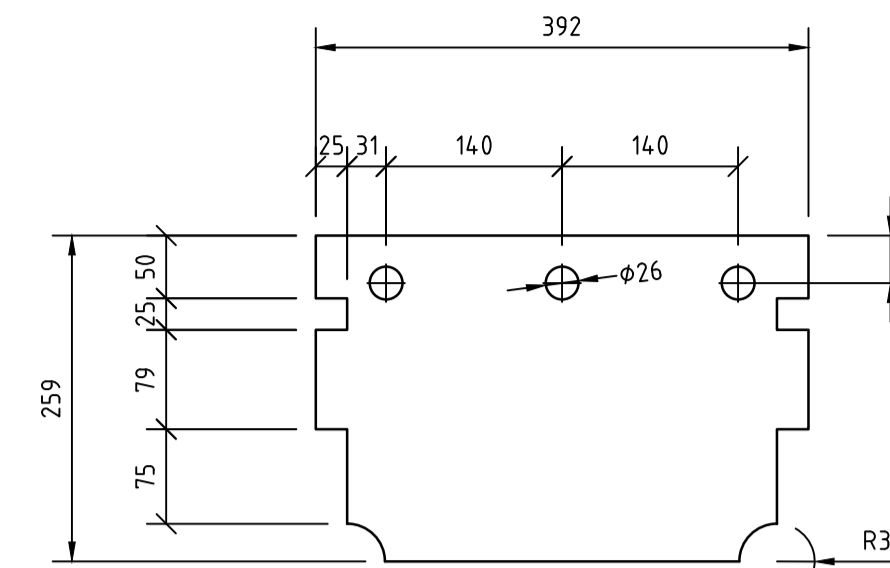
SIDE ELEVATION



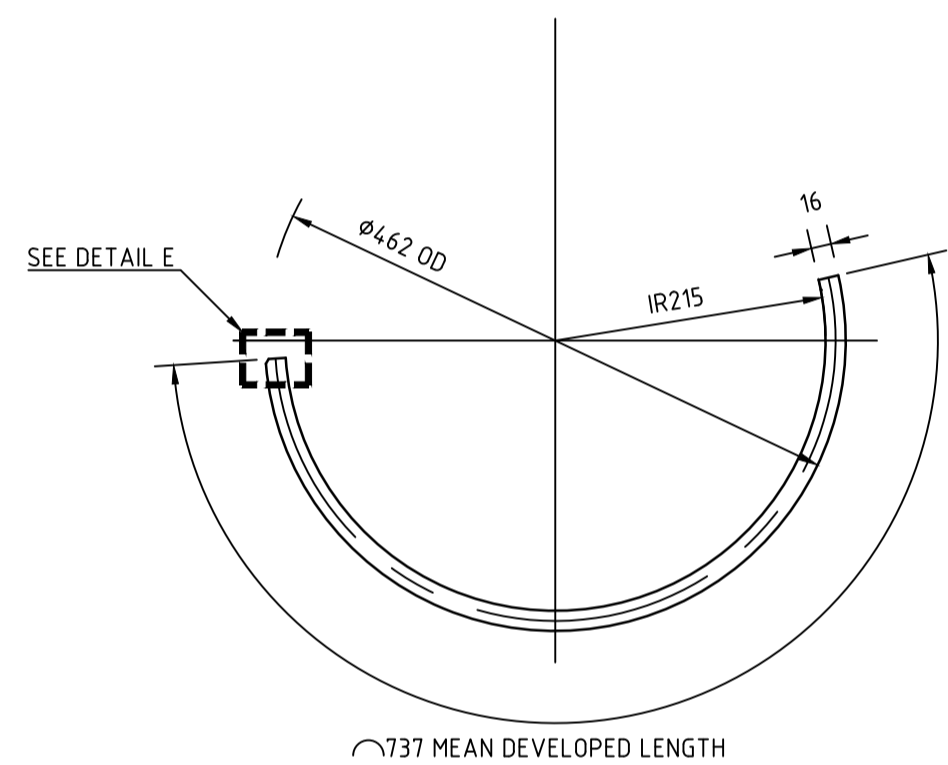
**DETAIL C**  
SCALE 1:1



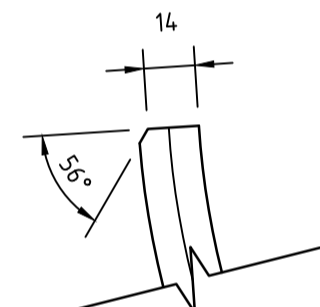
**DETAIL D**  
SCALE 1:1



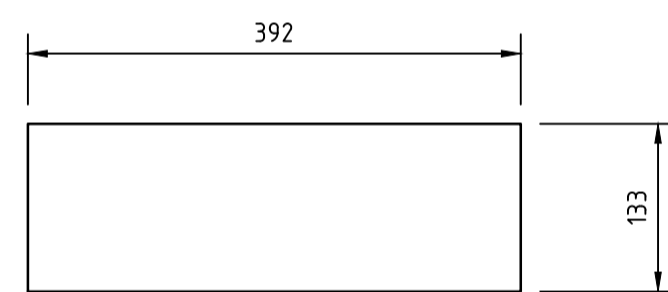
**5715-04**  
MATERIAL: 25 PL, 304 STAINLESS STEEL  
No. REQ'D: 2 OFF  
SCALE 1:6



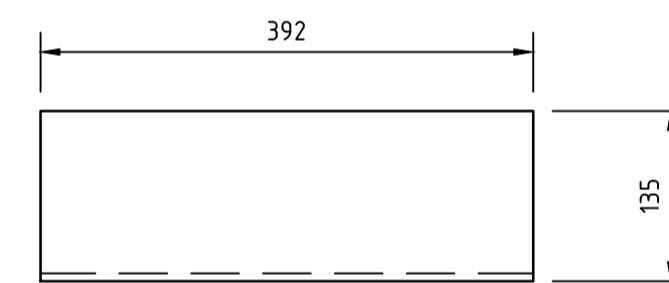
**5715-05**  
MATERIAL: 16 PL, 304 STAINLESS STEEL  
No. REQ'D: 1 OFF  
SCALE 1:6



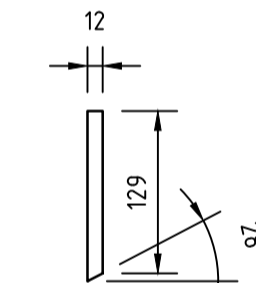
**DETAIL E**  
SCALE 1:2



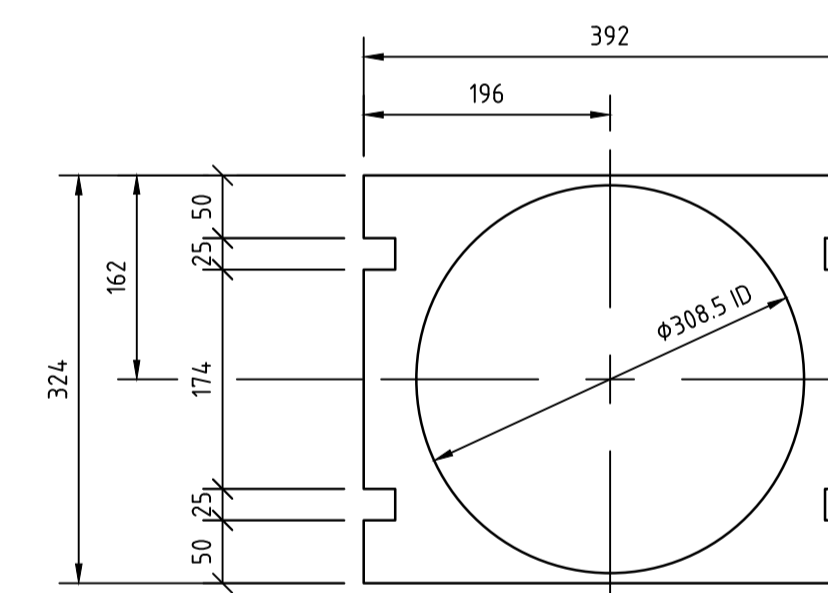
**5715-06**  
MATERIAL: 12 PL, 304 STAINLESS STEEL  
No. REQ'D: 1 OFF  
SCALE 1:6



**5715-07**  
MATERIAL: 12 PL, 304 STAINLESS STEEL  
No. REQ'D: 1 OFF  
SCALE 1:6



SIDE ELEVATION

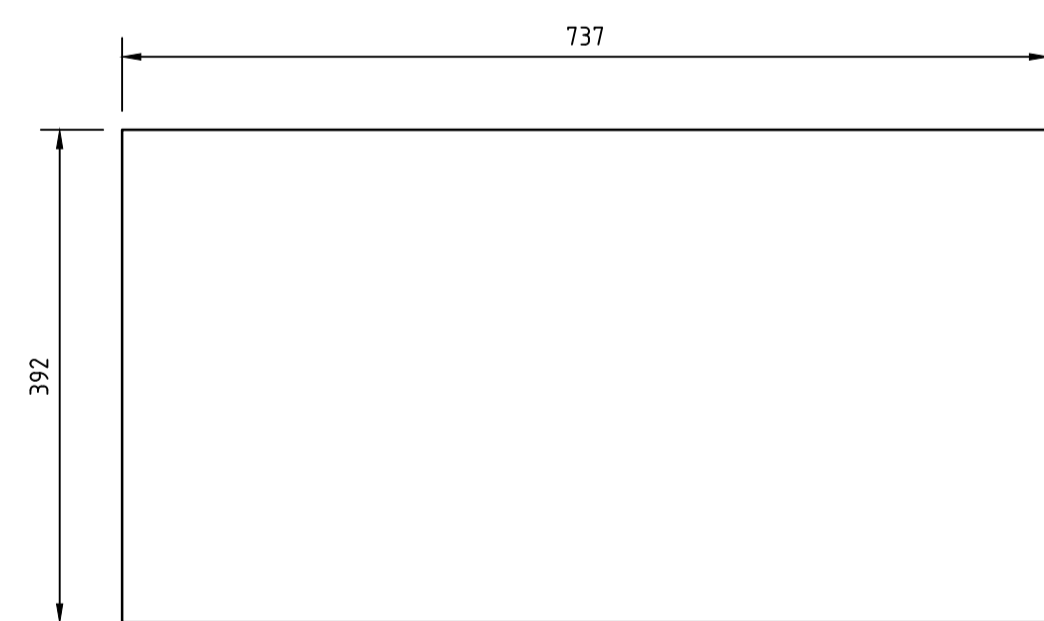


PLAN VIEW



FRONT ELEVATION

**5715-08**  
MATERIAL: 12 PL, 304 STAINLESS STEEL  
No. REQ'D: 1 OFF  
SCALE 1:6

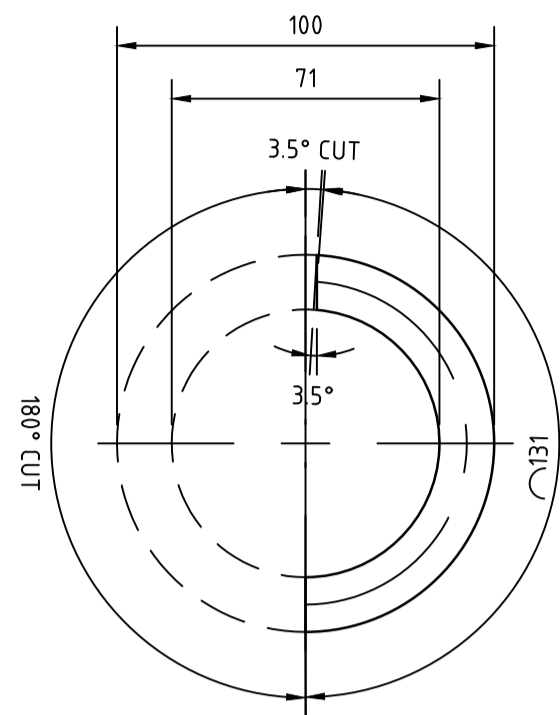


**5715-05 DEVELOPED LENGTH**  
SCALE 1:6

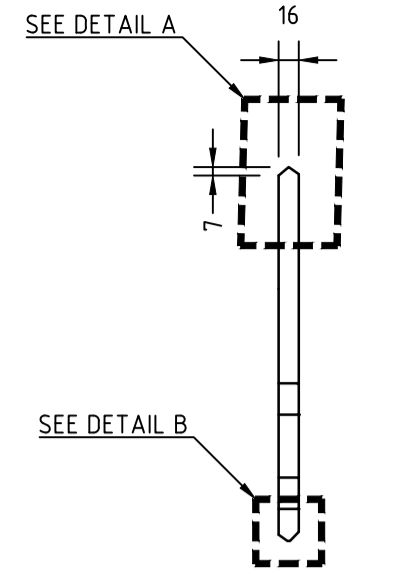
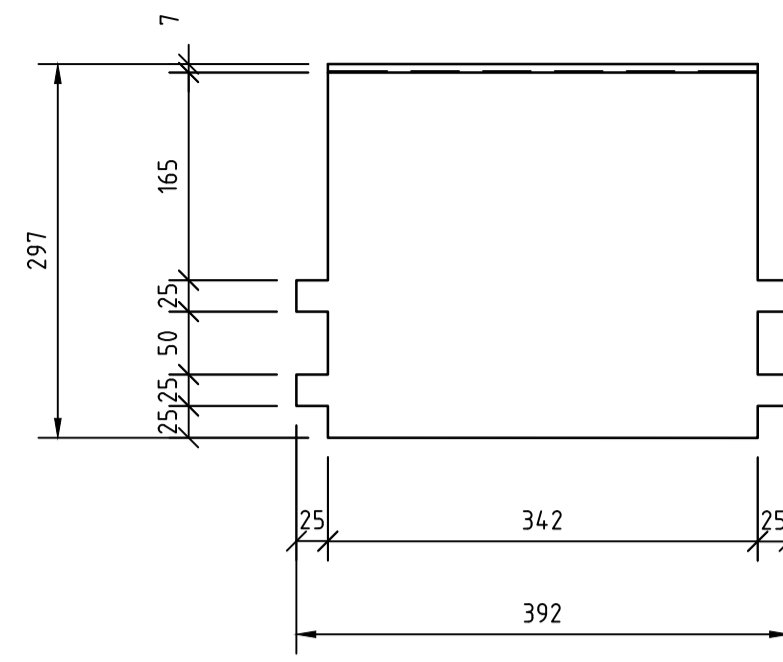
**ISSUED FOR CONSTRUCTION**

REVISIONS						REFERENCE DRAWINGS			DESIGNED	WILMAR	25/10/22	THIRD ANGLE PROJECTION	The design and engineering content shown on this drawing remains the property of STS and may not be copied in any way without prior written approval from the company. © STS			STS ABN 44 081 051 792		
6	CN	RF	NE	11/06/24	UPDATED PARTS			DRAWN	C. NOLAN	02/03/23	DO NOT SCALE							
1	CN	RF	NE	02/03/23	UPDATED PARTS AND ADDED WELD DETAIL			DESIGN CHK	R. FALLON	02/03/23	TITLE	6300 GROUP			ORIG. DRAWING No.			
2	CN	RF	NE	15/05/23	ADDED DIMENSIONS			APPROVED	N. ECKERSLEY	02/03/23	PAN (Sugar Crystallisation)	Sht			A1			
3	CN	RF	NE	30/08/23	UPDATED PARTS & ADDED WELD DETAILS			RPEQ	N/A	N/A	FORRERS 11" MASSECUIE PUMP	DRAWING No.			REV			
4	CN	RF	NE	11/09/23	UPDATED WELD DETAILS			SCALE	AS SHOWN			6300-PAN-M-005715K			03/04			
5	CN	RF	NE	13/09/23	UPDATED PART			This Drawing must not be used for Construction unless signed as Approved			BODY PLATING, STORE CODE 5168596			6				
REV	BY	CHK	APP	DATE	DESCRIPTION	TITLE	DRAWING No.				ARRANGEMENT & DETAILS							



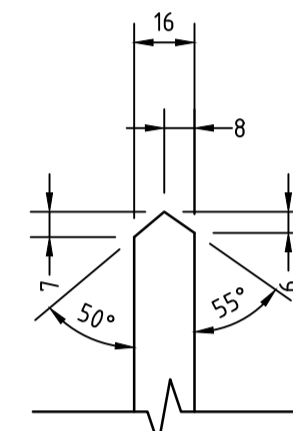


**5715-10**  
MATERIAL: 304 STAINLESS STEEL  
No. REQ'D: 1 OFF  
SCALE 1:2

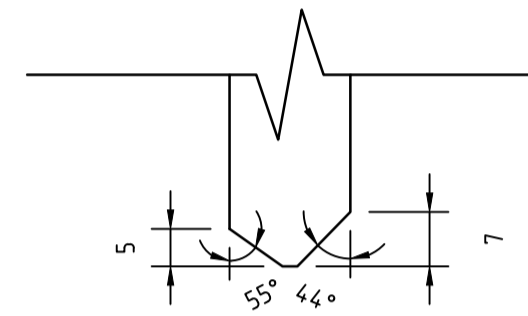


SIDE ELEVATION

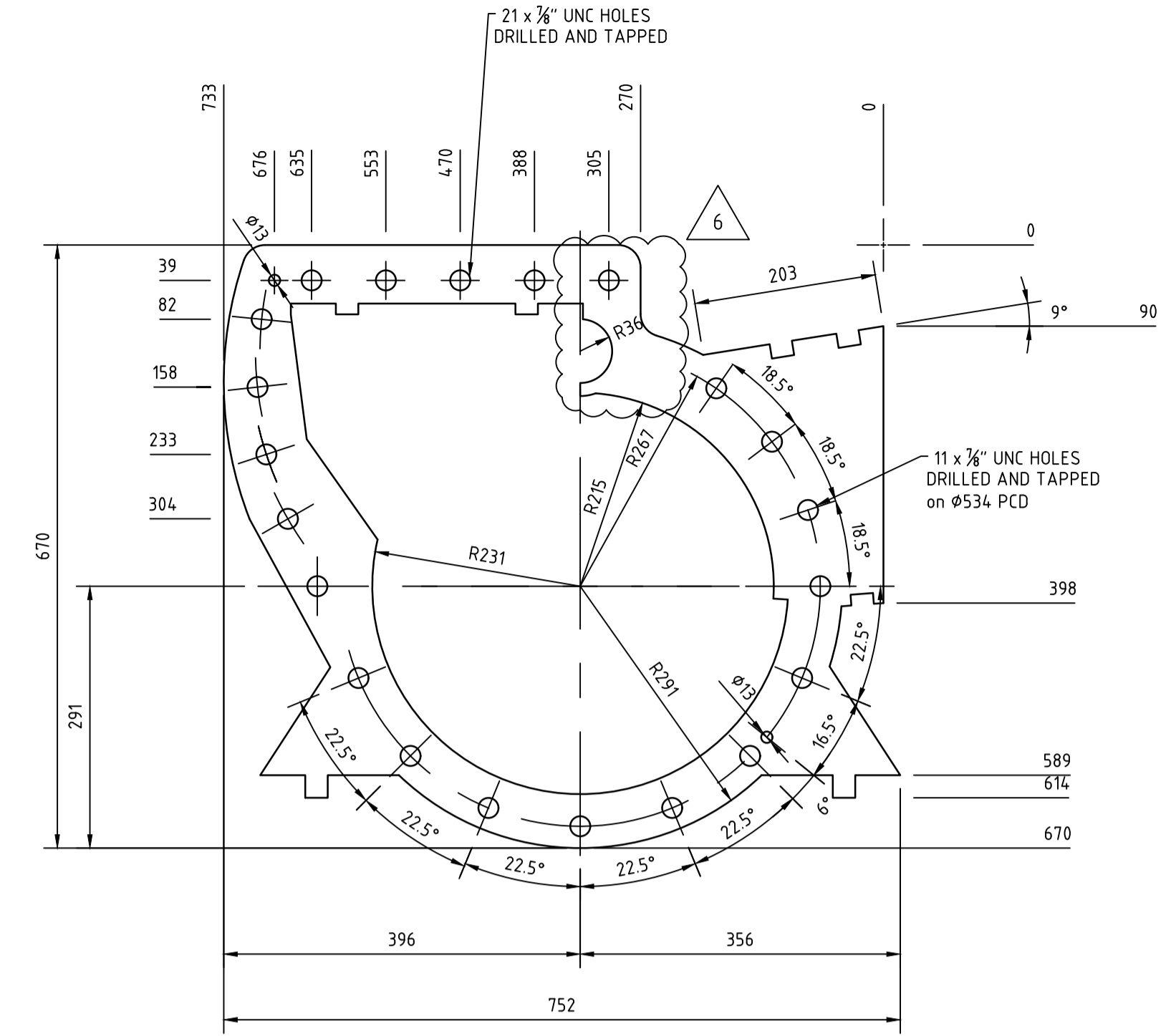
**5715-11**  
MATERIAL: 16 PL, 304 STAINLESS STEEL  
No. REQ'D: 1 OFF  
SCALE 1:6



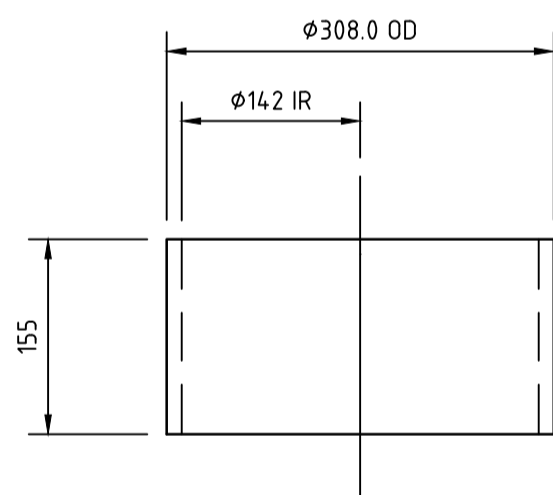
DETAIL A  
SCALE 1:2



DETAIL B  
SCALE 1:1

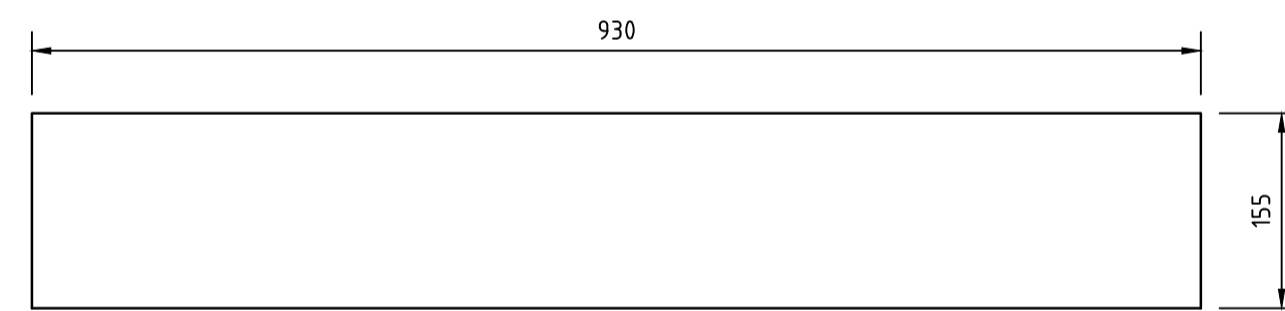


**5715-12**  
MATERIAL: 25 PL, 304 STAINLESS STEEL  
No. REQ'D: 1 OFF, 1 OPP HAND  
SCALE 1:6

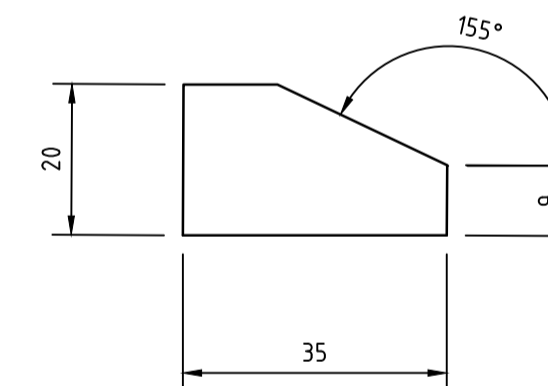


FRONT ELEVATION

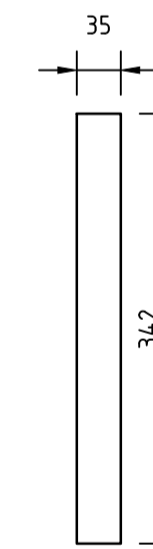
**5715-09**  
MATERIAL: 12PL, 304 STAINLESS STEEL  
No. REQ'D: 1 OFF  
SCALE 1:6



**5715-09 DEVELOPED LENGTH**  
SCALE 1:6



**5715-13**  
MATERIAL: 20 PL, 304 STAINLESS STEEL  
No. REQ'D: 1 OFF  
SCALE 1:2



**5715-13 DEVELOPED LENGTH**  
SCALE 1:6

**ISSUED FOR CONSTRUCTION**

REVISIONS						REFERENCE DRAWINGS			DESIGNED	WILMAR	25/10/22	THIRD ANGLE PROJECTION	The design and engineering content shown on this drawing remains the property of STS and may not be copied in any way without prior written approval from the company. © STS			STS ABN 44 081 051 792	
6	CN	RF	NE	11/06/24	UPDATED PARTS			DRAWN	C. NOLAN	02/03/23	DO NOT SCALE	<b>TITLE</b> 6300 GROUP PAN (Sugar Crystallisation) FORRERS 11" MASSECUIE PUMP BODY PLATING, STORE CODE 5168596 ARRANGEMENT & DETAILS			ORIG. DRAWING No. Sht <b>A1</b>		
1	CN	RF	NE	02/03/23	UPDATED PARTS AND ADDED WELD DETAIL			DESIGN CHK	R. FALLON	02/03/23					DRAWING No. SHEET <b>04</b>		REV
2	CN	RF	NE	15/05/23	ADDED DIMENSIONS			APPROVED	N. ECKERSLEY	02/03/23					6300-PAN-M-005715K 04 <b>6</b>		
3	CN	RF	NE	30/08/23	UPDATED PARTS & ADDED WELD DETAILS			RPEQ	N/A	N/A							
4	CN	RF	NE	11/09/23	UPDATED WELD DETAILS			SCALE	AS SHOWN								
5	CN	RF	NE	13/09/23	UPDATED PART			This Drawing must not be used for Construction unless signed as Approved									
REV	BY	CHK	APP	DATE	DESCRIPTION	TITLE	DRAWING No.										