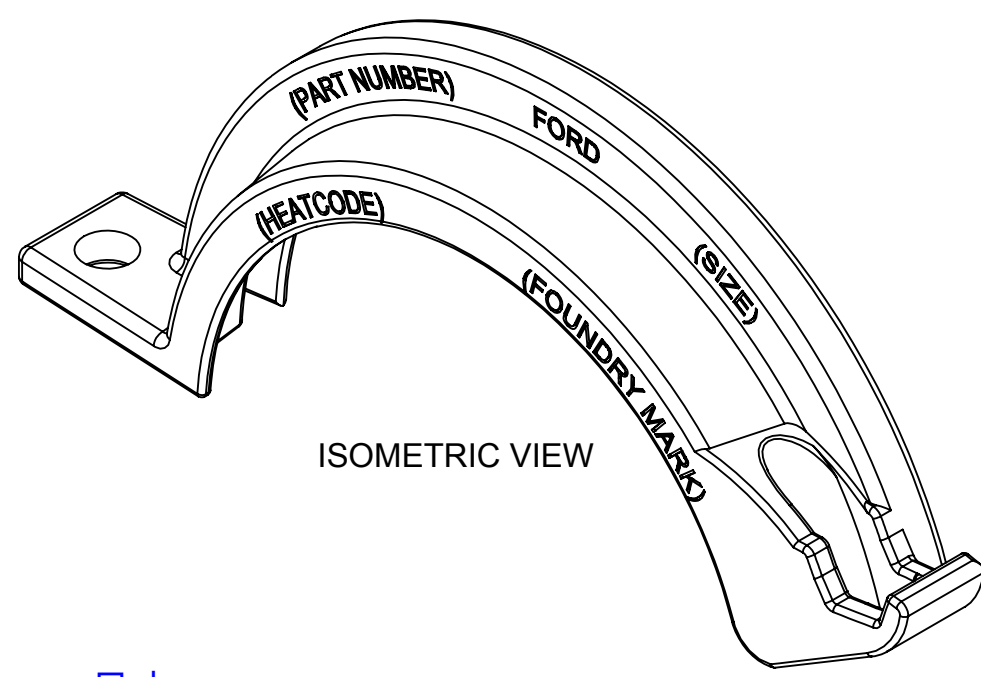
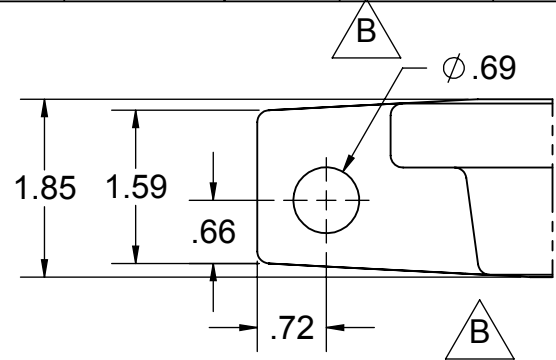
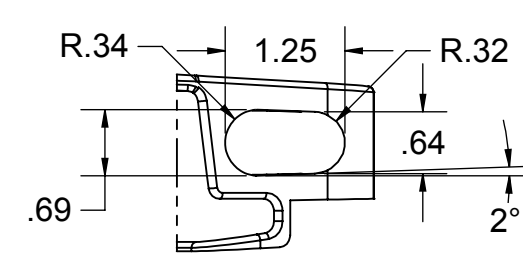
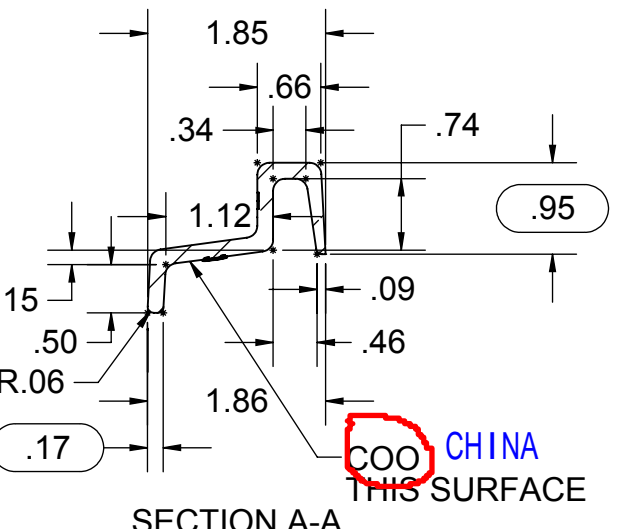
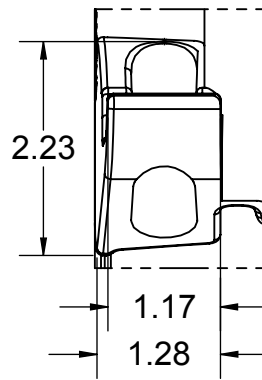
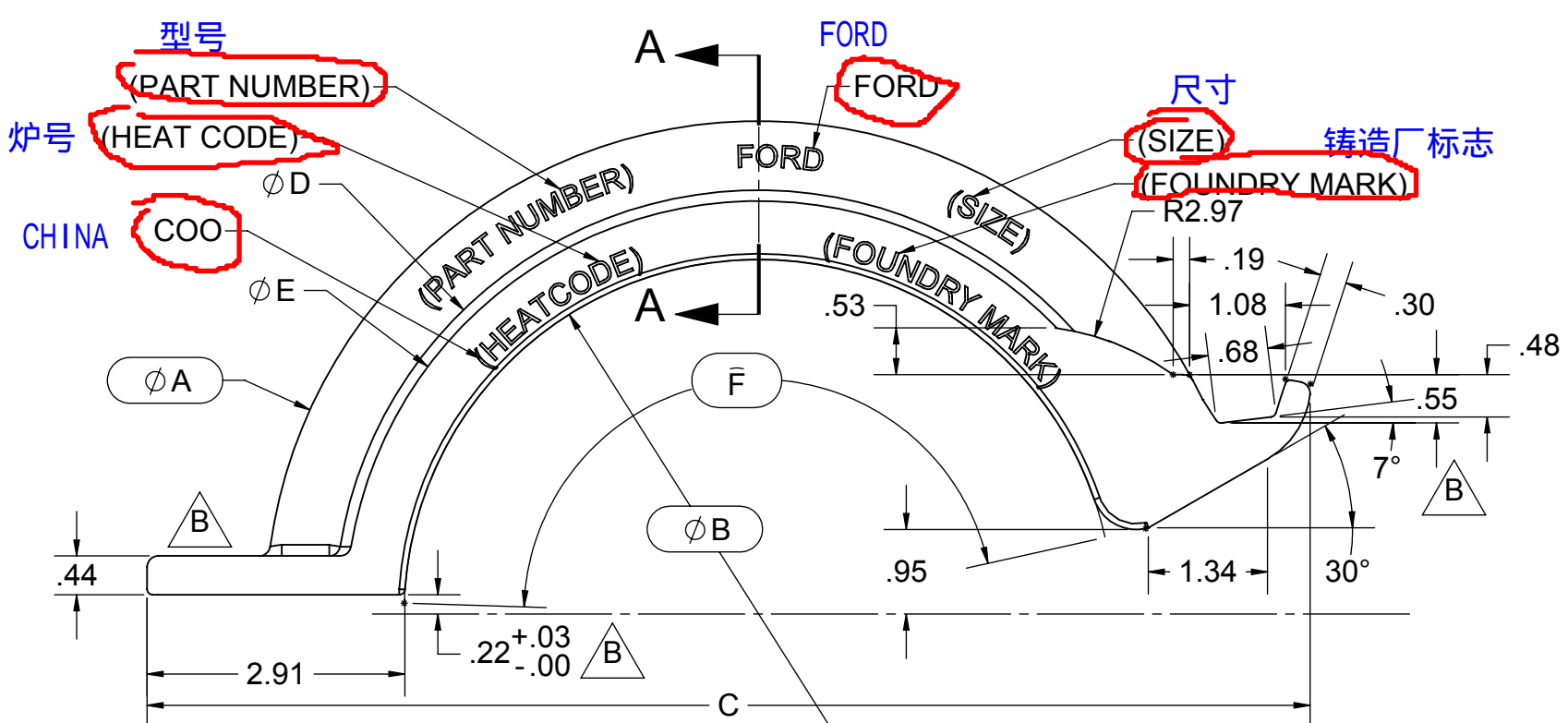


尺寸 SIZE	PART NUMBER	型号 Ø A	Ø B	C	Ø D	Ø E	F	ESTIMATED WEIGHT 重量
4"	30465	9.08	5.95	10.93	7.54	7.24	8.34	2.48
6"	30466	11.13	8.00	13.13	9.56	9.32	11.56	2.99
8"	30467	13.29	10.16	15.39	11.75	11.45	14.96	3.52
10"	30468	14.81	11.69	16.97	13.28	12.98	17.36	3.89
12"	30469	17.12	14.00	19.34	15.59	15.29	20.99	4.45



- NOTES:
- CORNER AND FILLET RADII ARE .13" U.N.O.
 - ALL DRAFT ANGLES TO BE 3° U.N.O.
 - MATERIAL:
-30 DUCTILE IRON PER ASTM A536 GRADE 65-45-12
HARDNESS:156-217 BHN
NODULARITY: 80% MIN.
 - COATING:
-26 E-COATING
BLACK EPOXY APPLIED USING THE ELECTRO COAT PROCESS

-57 EPOXY
BLACK FUSION BONDED EPOXY 8-10 MILS DFT
NSF61 LISTED
 - TOLERANCE:
±.030 0-3 INCHES
±.045 3-8 INCHES
±.060 8+ INCHES
 - ALL LETTERING TO BE RECESSED U.N.O.
(RECESSED LETTERING HEIGHT TO BE .25")
TEXT TO INCLUDE:
(PART NUMBER)
COO
(HEAT CODE)
(FOUNDRY MARK)
FORD
(SIZE)
 - P/N: 3046X-XX-XX
COATING MATERIAL



STAMP: **VALIDATION B**

FOR QUOTE ONLY

SAVED STAMP:
X:\16582 - HYMAX CLONE\IP15-031\nicrid\Thursday, August 27, 2015 11:13:59 AM

ECN NO.	REV	DATE	DESCRIPTION	BY
P15-031	B	4/16/15	RE-OPENED PROJECT; CHANGED TO A TWO BOLT DESING; REDUCED F BY .13; CHANGED C DIM. AND WEIGHT TO RELECT NEW DESIGN; CHANGED BOLTING PROFILE; TOP WAS FEMALE IN TITLE; .22 +.03 -.00 WAS .13	

ECN NO.: P13-035	ENDRING, FORDMAX COUPLING 4"-12" TOP		
ANGULAR ± 1/2°	PART NO. CHARTED	SHT. NO. 1 OF 1	MATERIAL NOTED
DECIMAL X.X ± X.XX ± NOTED X.XXX ±	DRAWN BY	DATE 5/17/13	DRAWING NO. 201332
FRACTIONAL ±	CHK'D BY	SCALE 1:2	
ESTIMATED WEIGHT: CHARTED			